



Water Supply Update

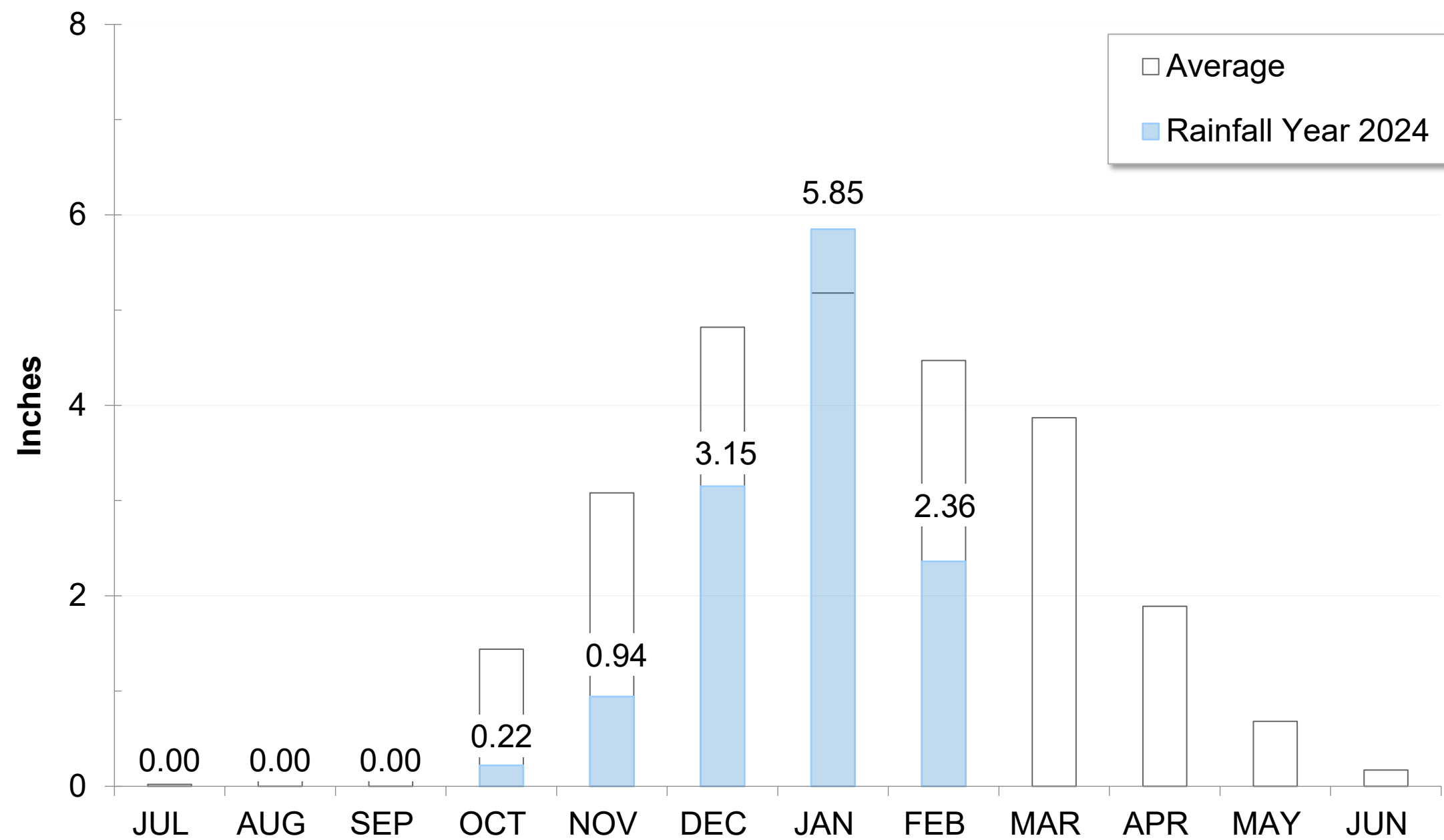
Board of Directors
February 13, 2024

Water Supply Briefing

- Current Water Supply
- California Water Supply
- Water Supply Projections

Precipitation as of February 7

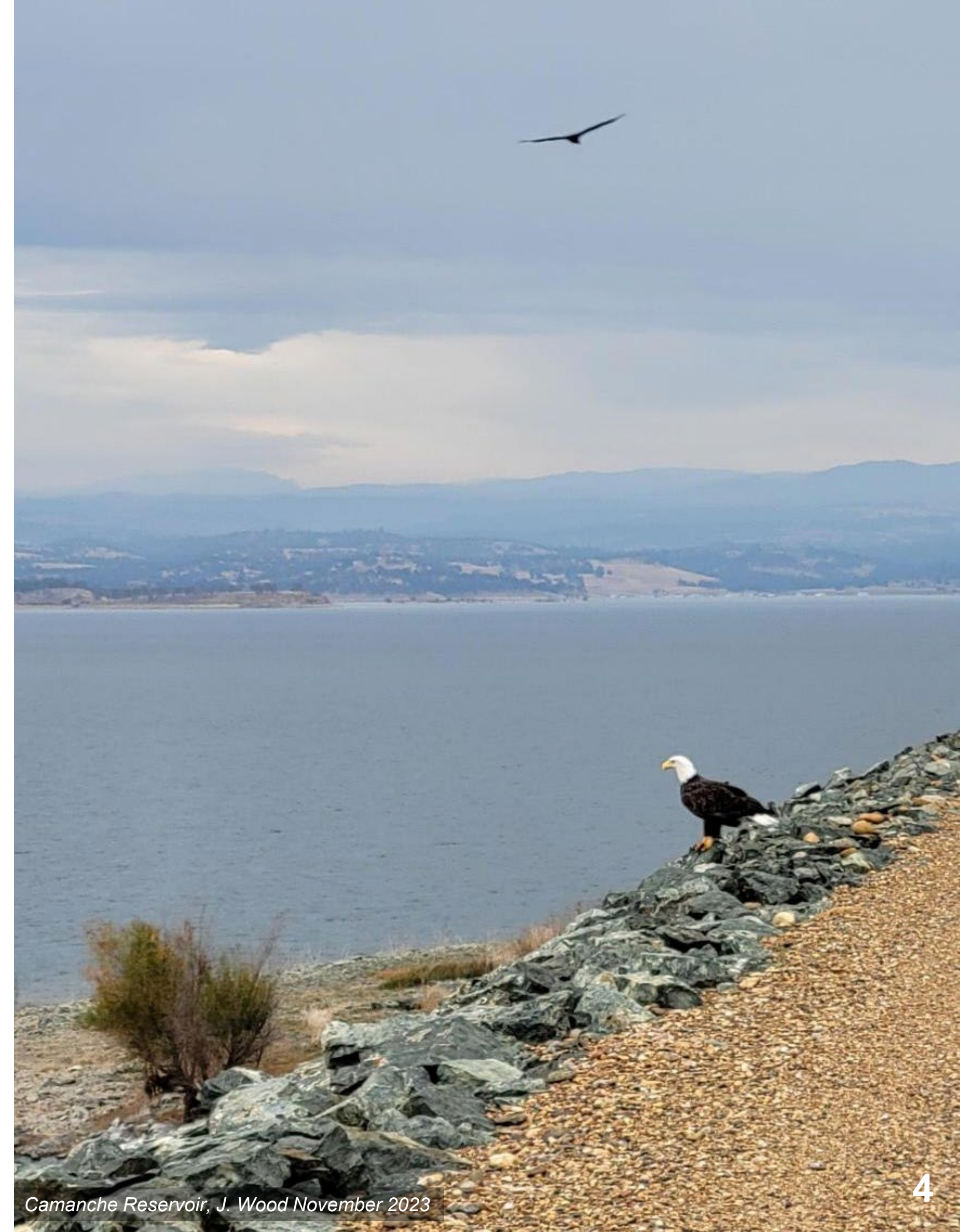
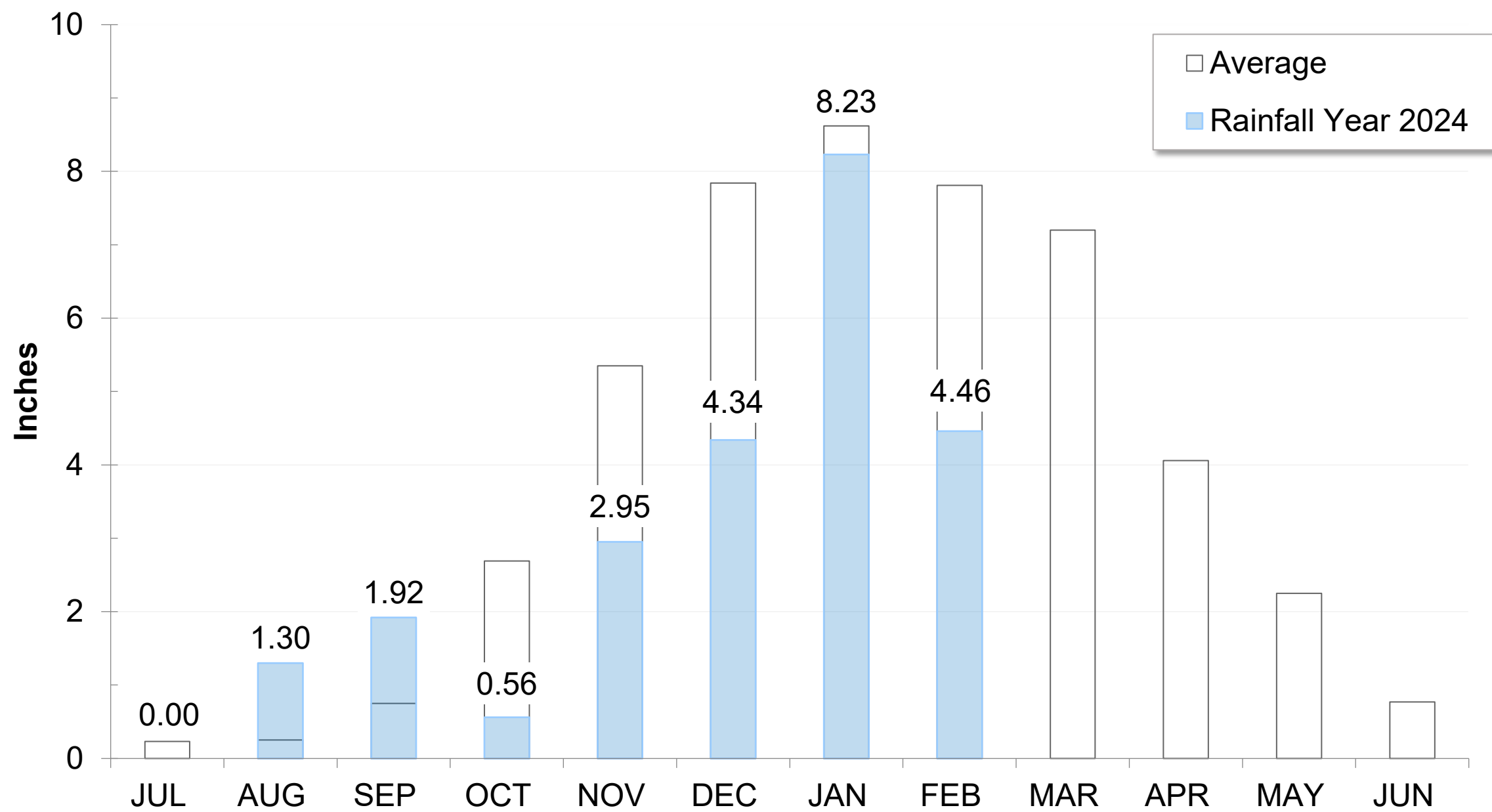
East Bay: 12.52" (76% of average)



San Pablo Reservoir, J. Urness March 2023

Precipitation as of February 7

Mokelumne: 23.76" (85% of Average)



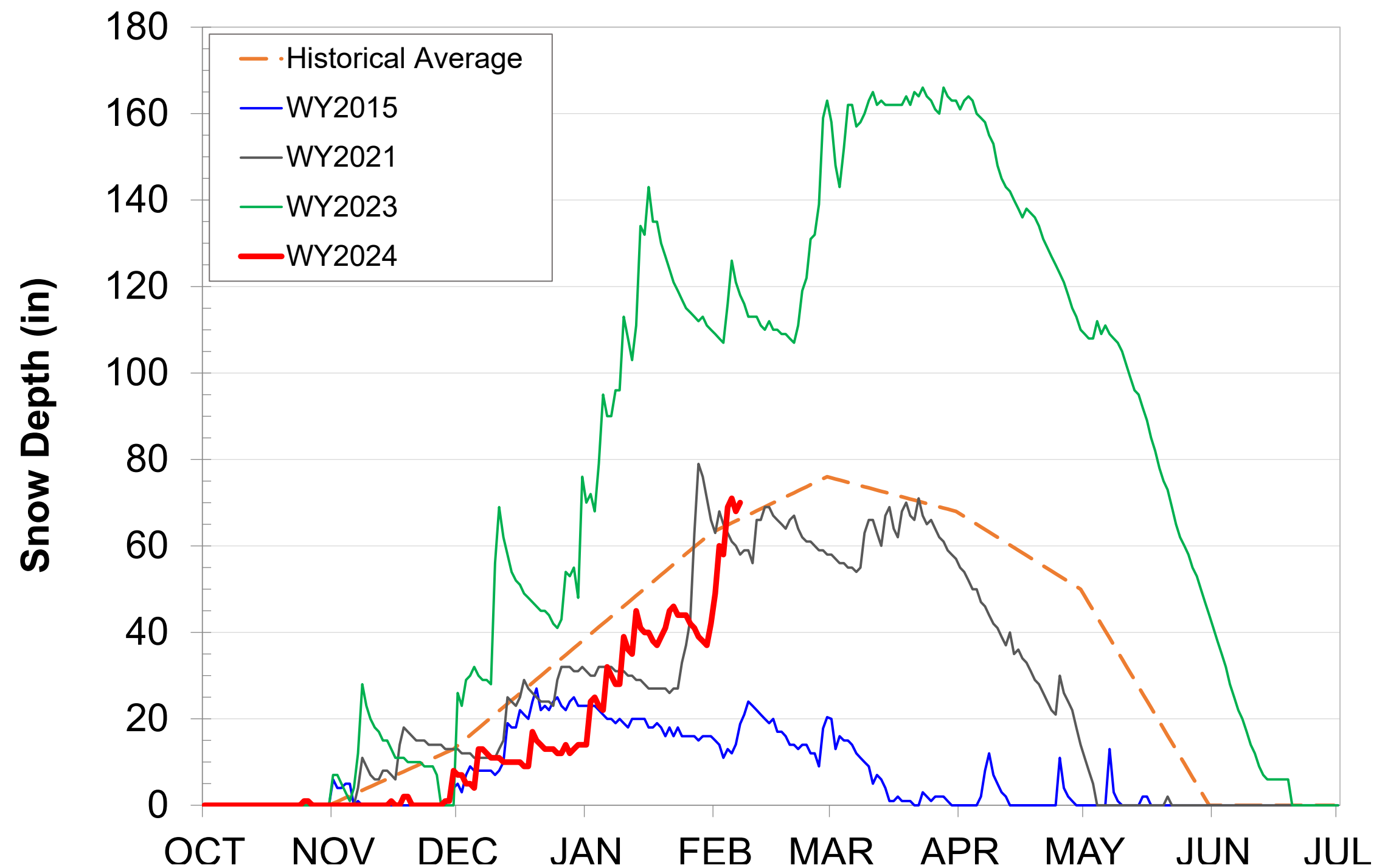
Caples Lake Snow as of February 7

Snow Depth

70" (106% of average)

Snow Water Content

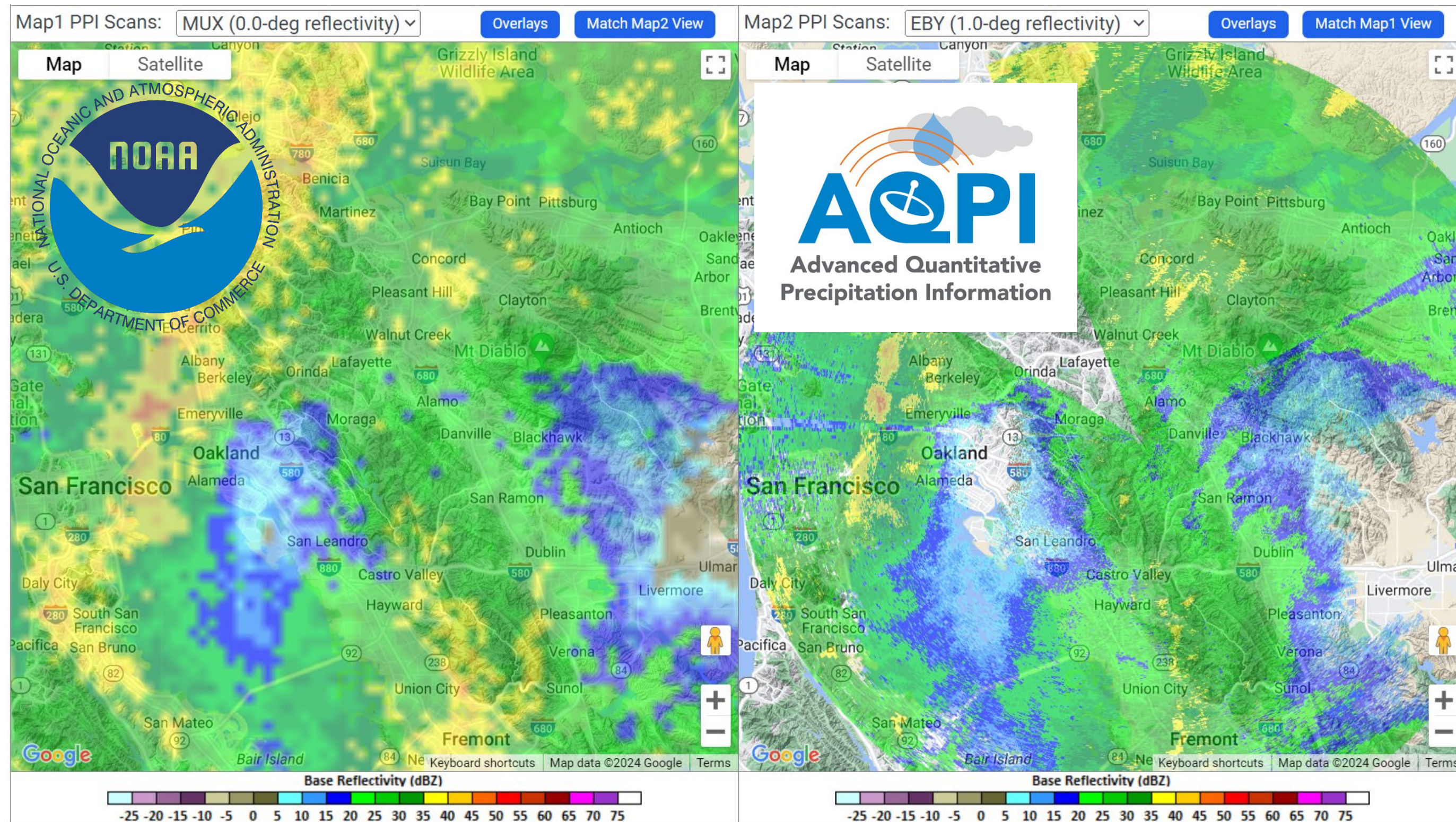
12.55" (57% of average)



January 31 Atmospheric River Radar Observations

Comparison of Radar Imagery

Next Generation
Weather Radar
(NEXRAD)
Mount Umunhum
S-Band Radar



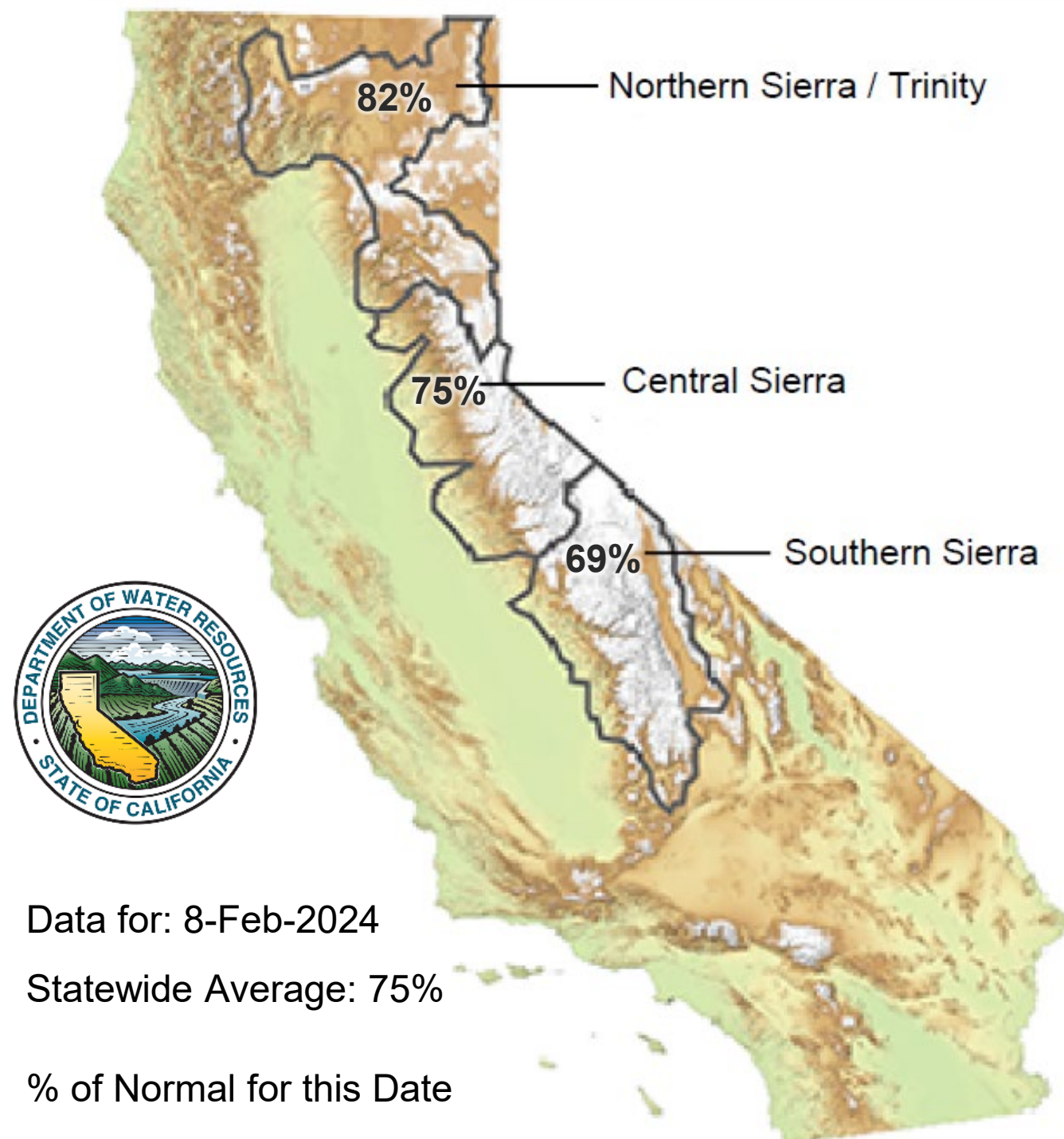
Rocky Ridge
X-Band Radar

California Water Supply



Snowpack as of February 8

Snow Water Equivalent:
75% in Central Sierra



Data for: 8-Feb-2024

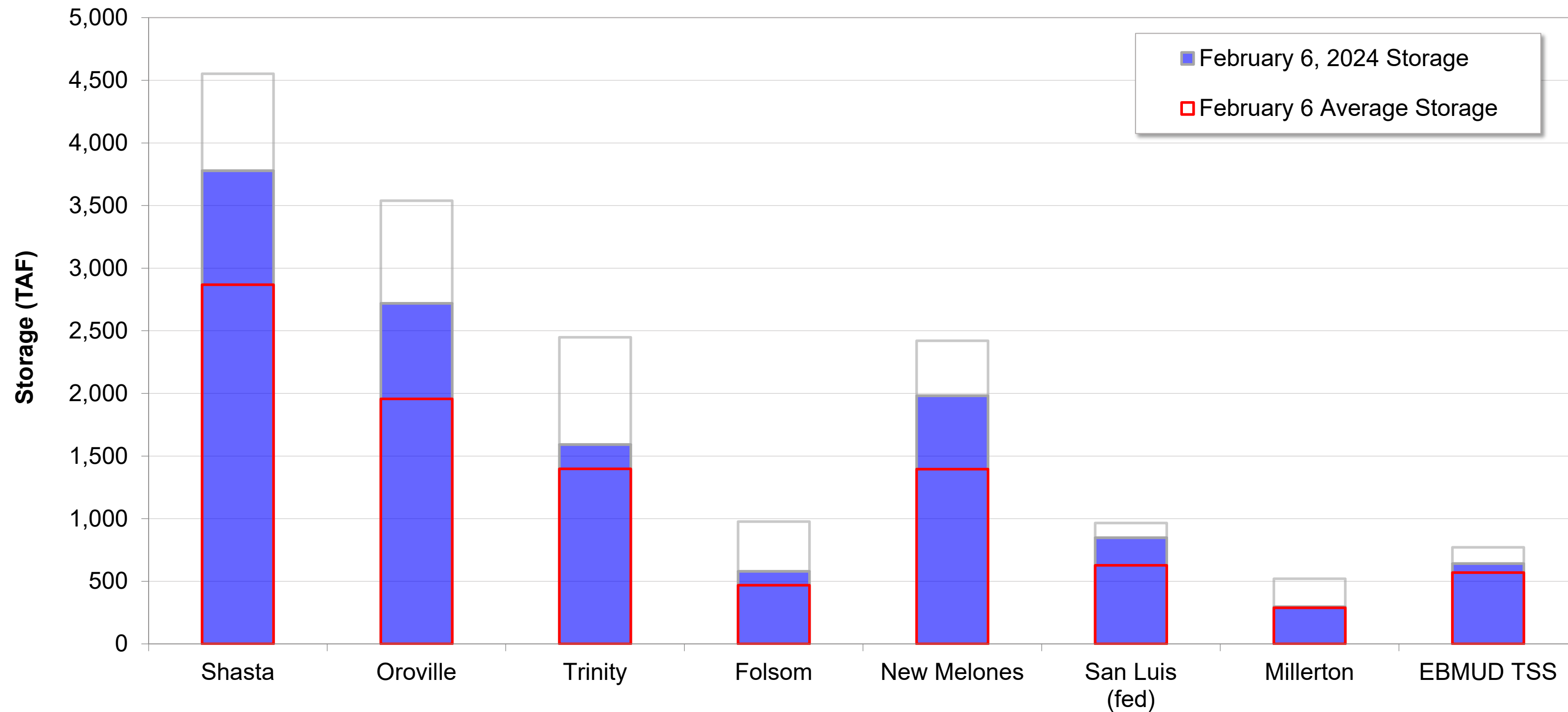
Statewide Average: 75%

% of Normal for this Date



Northern California Water Supply

Current vs. Average Storage



TAF: Thousand Acre-Feet

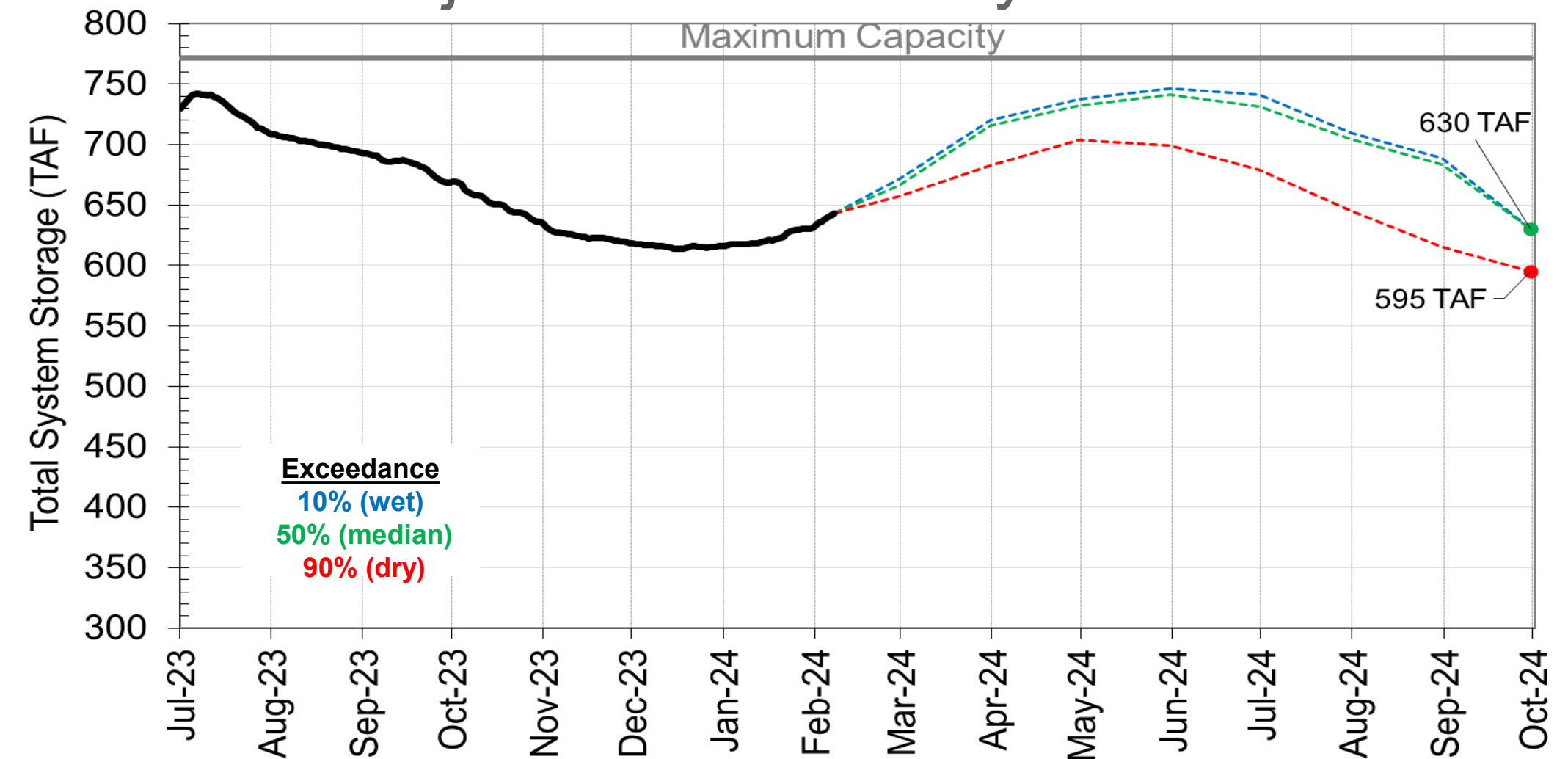
Water Supply Projections

Total System Storage as of February 7

Current: 643 TAF (113% of Average)

Reservoir	Current Storage, TAF	Percent of Average	Percent of Capacity
Pardee	176	98%	86%
Camanche	331	126%	79%
East Bay	136	107%	91%
Total System	643	113%	83%

Projected: 630 TAF by 9/30



TAF: Thousand Acre-Feet

Questions?



Camanche Reservoir Release, J. Toone – March 2023



**FLOWING
INTO
THE
FUTURE**

WATER SUPPLY ENGINEERING DAILY REPORT

Wednesday, February 7, 2024

RESERVOIR STORAGE AND ELEVATION

	<u>WATER SURFACE</u>		<u>STORAGE</u>		<u>MAXIMUM CAPACITY</u>		Release	Spill
	Elevatio n	+Gain -Loss	+Gain -Loss	Elevation	Storage	Cfs		
<u>MOKELUMNE</u>	Feet		Ac-Ft		Feet	Ac-Ft		
Pardee	554.52	-0.03	175850	-60	567.65	203795	925	0
Camanche	223.39	0.19	331120	1270	235.5	417120	329	0
<u>EAST BAY</u>								
Briones	573.82	0.08	57340	50	576.14	58960	0	0
Chabot	225.43	0.22	9740	70	227.25	10350	0	0
Lafayette	436.02	0.12	2730	10	449.16	4250	0	0
San Pablo	302.9	0.35	29480	250	313.68	37915	0	0
Upper San Leandro	457.42	0.36	<u>36960</u>	<u>270</u>	459.98	<u>38905</u>	0	0
<u>Total East Bay Res.</u>			<u>136250</u>	<u>650</u>		<u>150380</u>		
TOTAL SYSTEM STORAGE			643220	1860		771295		

DISTRIBUTION SYSTEM		
<u>DISTRIBUTION RESERVOIRS</u>		
	Storage MG	Operating Capacity
Today	326	720
Total Previous Day	<u>333</u>	
Total Change	-7	
<u>WATER PRODUCTION AND DEMAND</u>		
	Million Gallons	Capacity MGD
Lafayette WTP	0	25
Orinda WTP	59	190
San Pablo WTP	0	30
Sobrante WTP	28.5	50
Upper San Leandro WTP	0	45
Walnut Creek WTP	24.6	90
<u>TOTAL SURFACE PRODUCTION</u>	112.1	430
Miscellaneous(Estimated)	0.4	
<u>TOTAL WATER PRODUCTION</u>	<u>112.5</u>	
Change in Distribution System	-7	
Wash Water from Distribution Sys.	1	
<u>SYSTEM DEMAND</u>	118.1	
East-of-Hills Demand	22.2	
West-of-Hills Demand	95.9	

MOKELUMNE SYSTEM			
<u>AQUEDUCT DELIVERIES</u>			
	MG	Flow Conditions	
Line 1	29.9	THROTTLE	
Line 2	35.1	THROTTLE	
Line 3	<u>35.3</u>	<u>THROTTLE</u>	
TOTAL	100.3	155 Cfs	
<u>FSCC to MOK AQUEDUCTS (Measured at Brandt), MG</u>			
Mok 1	0		
Mok 2	<u>0</u>		
	0 MG		
<u>RIVER FLOWS AND RELEASES</u>			
		Cfs	
Mokelumne River Natural Flow		1214	
Pardee Reservoir Inflow		1014	
Pardee Release to Camanche Res.		925	
Pardee Release to JVID		0	
Camanche Release to Mokel. River		329	
<u>PG&E CO. STORAGE (Acre-feet)</u>			
	Storage	Change	Maximum Capacity
Old Reservoirs	6676	-45	26560
Salt Springs Res.	13226	244	141857
Lower Bear Res.	<u>7500</u>	<u>197</u>	<u>52025</u>
Total	27402	396	220442

	<u>RAW WATER TRANSMISSION</u>	
	Ac-ft <u>INPUT</u>	<u>DRAFT</u>
Briones Res.	0	0
San Pablo Res.	51	91
U. San Leandro Res.	0	0
TOTAL	51	91

<u>STATION</u>	<u>PRECIPITATION (Inches)</u>				
	<u>THIS YEAR</u>			<u>AVERAGE YEAR</u>	
	<u>Today</u>	<u>Month</u>	<u>to-Date</u>	<u>to-Date</u>	<u>Season Total</u>
USL WTP	0.48	2.69	14.31	15.54	25.33
Orinda WTP	0.79	3.04	18.33	19.29	32.06
Lafayette Reservoir	0.44	2.03	10.73	17.2	28.18
Walnut Creek WTP	0.64	2.14	11.14	14.15	23.02
Camp Pardee	0.44	2.49	11.14	12.27	21.56
Salt Springs P.H.	0.4	5.15	23.82	26.19	45.51

REMARKS
 WID Canal Diversion = 0 cfs
 Mokelumne River below WID = 342 cfs

PG&E data as of 4:00 pm previous date.
 All other data as of midnight.
 WTP capacities are sustainable rates.

<u>CAPLES LAKE (7,830 FT) DATA</u>		
	Today	Average
Snow Depth	70 Inches	66 Inches
Water Content	12.6 Inches	22.1 Inches