

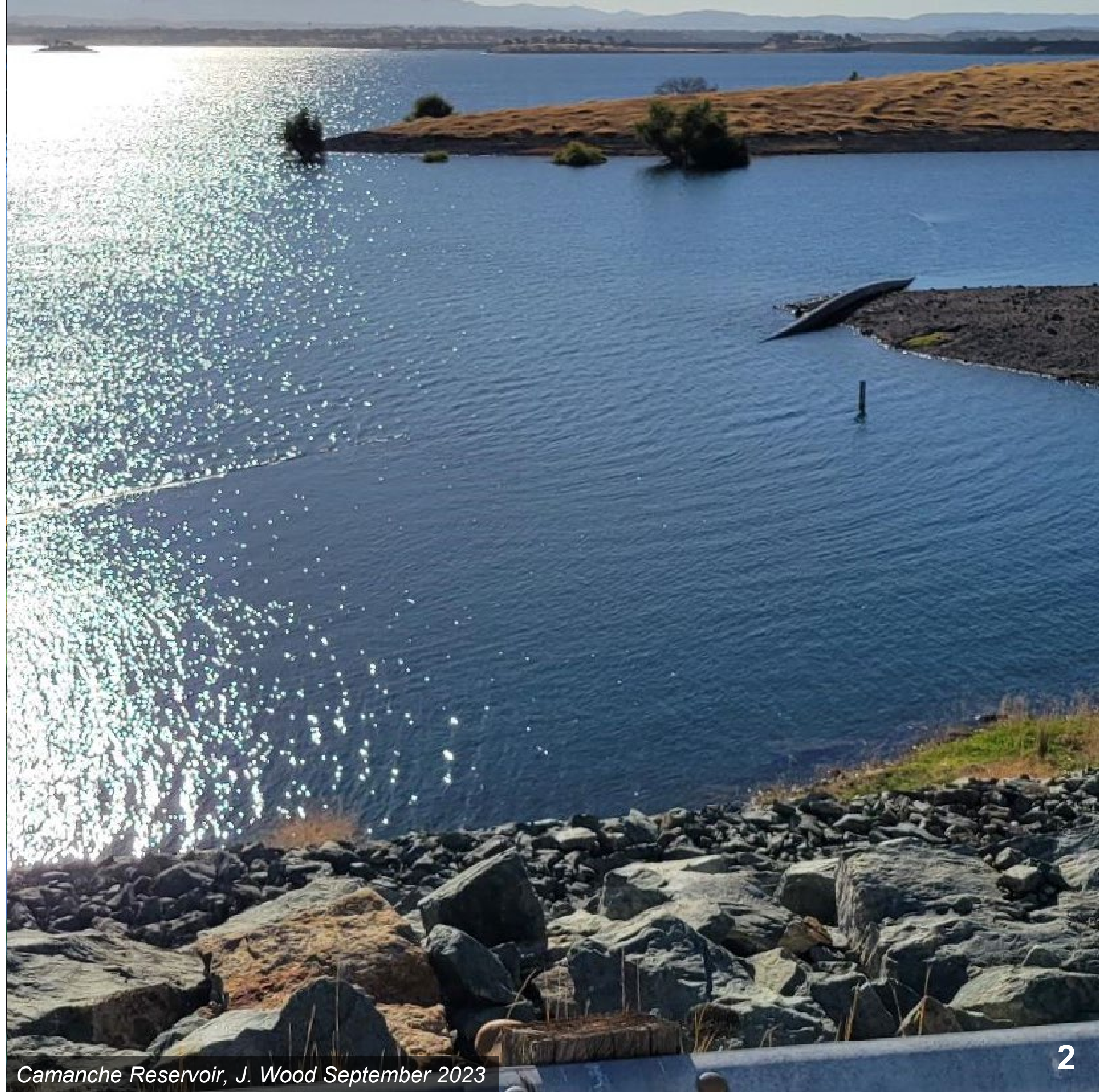


Water Supply Update

Board of Directors
January 9, 2024

Water Supply Briefing

- Water Year 2023 Review
- Current Water Supply
- California Water Supply
- Water Supply Projections



Water Year 2023 Review

Water Year 2023 Review

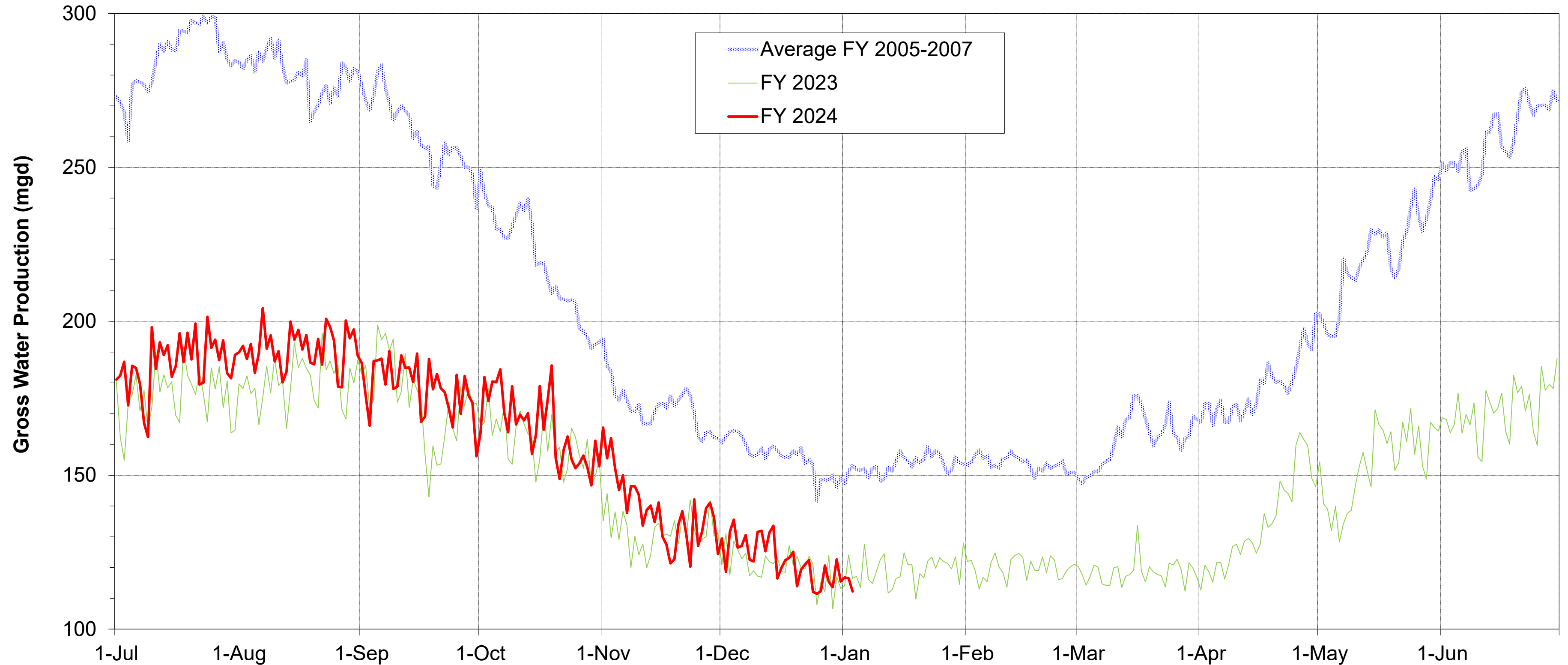
Upper Mokelumne Precipitation:	76.6" (48.3" avg)
Snowpack Water Content (Max):	67.3" (33.0" avg)
East Bay Precipitation:	37.2" (26.8" avg)
Total Unimpaired Runoff:	1,485 TAF (745 TAF avg)
End of Water Year Storage:	630 TAF

Current Water Supply

Gross Water Production

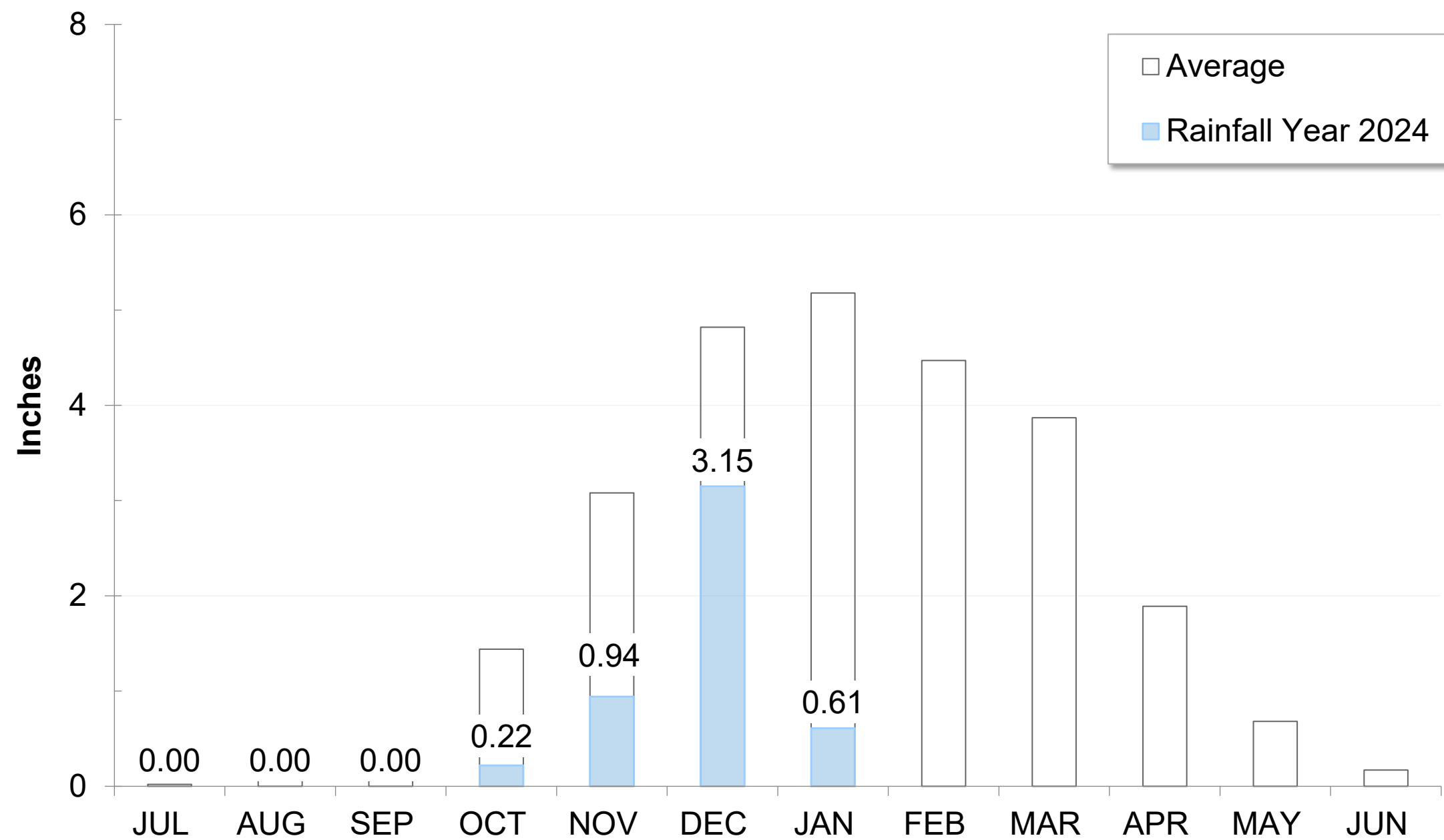
FY2024 demands show 4% increase from FY2023

FY2024 demands show 29% decrease from FY2005-2007



Precipitation as of January 3

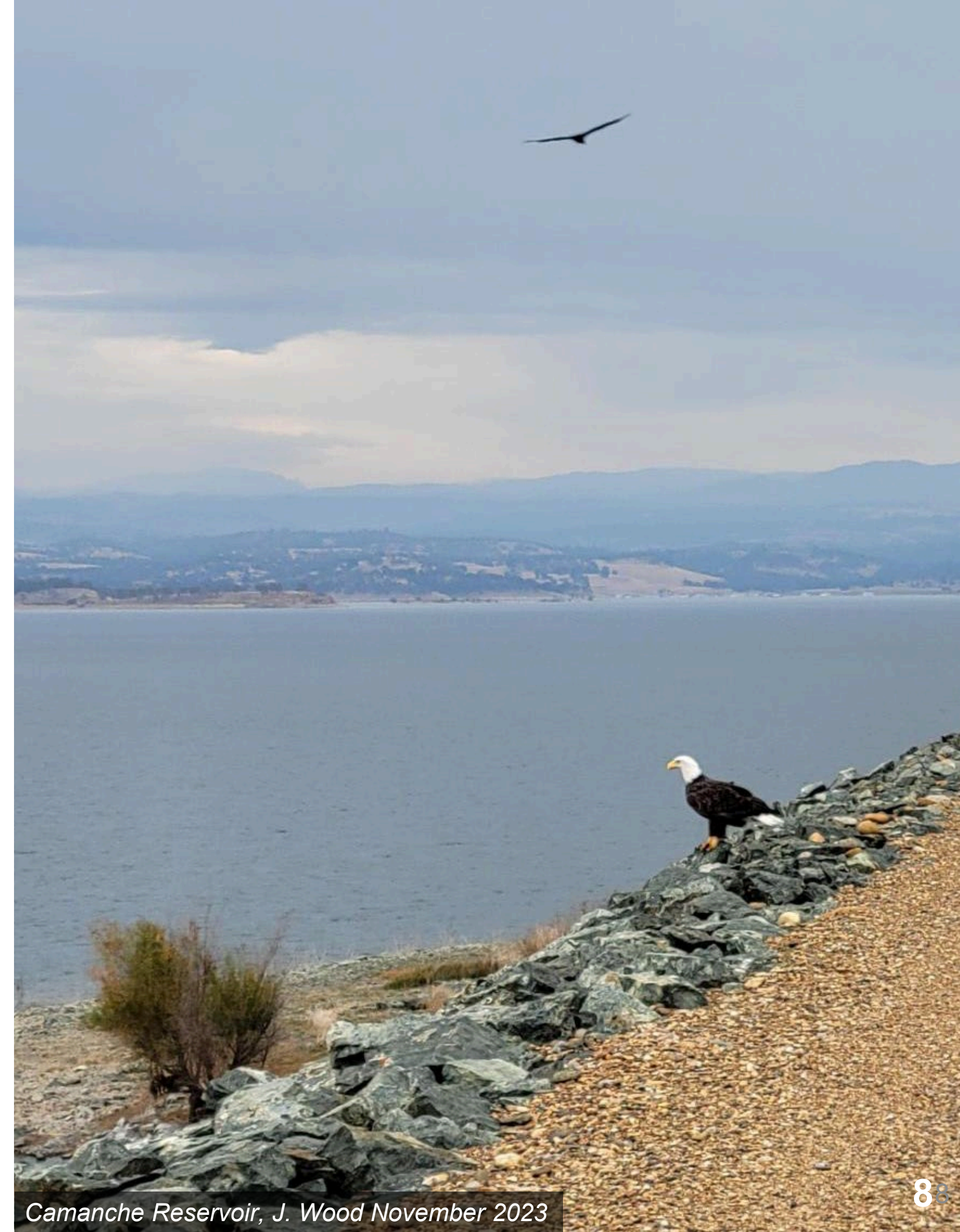
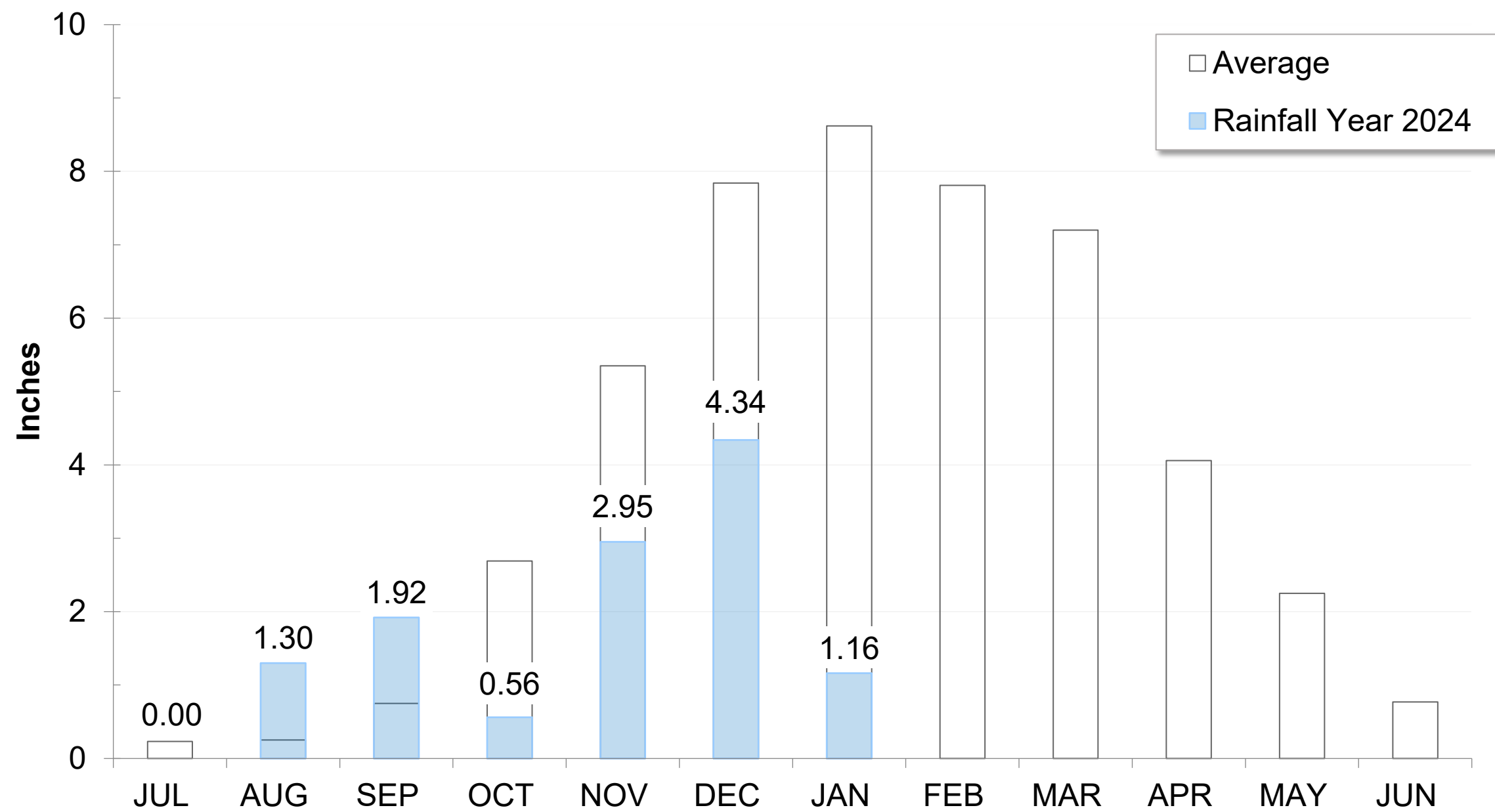
East Bay: 4.92" (47% of average)



San Pablo Reservoir, J. Urness March 2023

Precipitation as of January 3

Mokelumne: 12.23" (67% of Average)



Camanche Reservoir, J. Wood November 2023

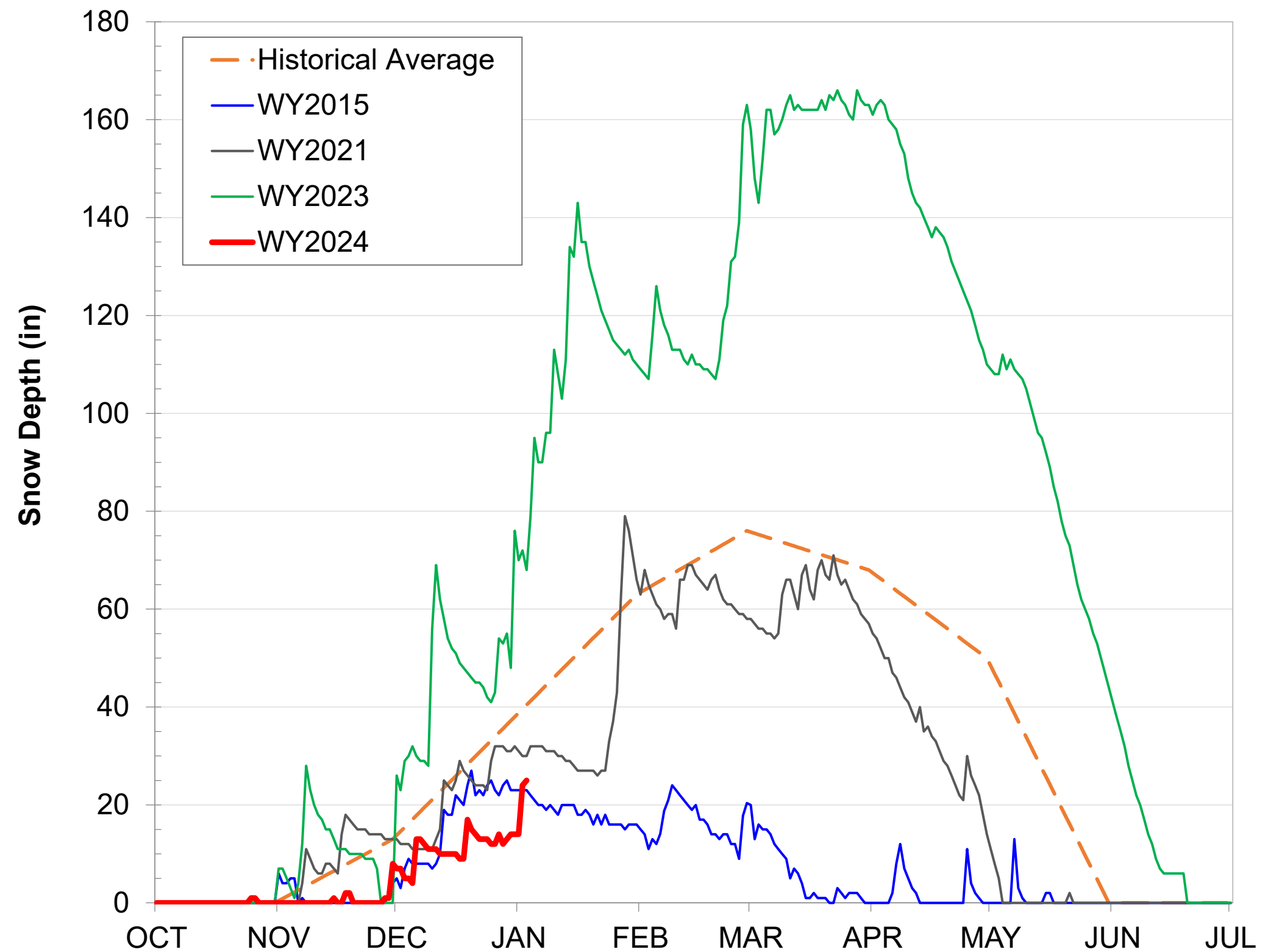
Caples Lake Snow as of January 3

Snow Depth

25" (62% of average)

Snow Water Content

3.37" (29% of average)



Snowpack as of January 4

Snow Water Equivalent:
34% in Central Sierra



Data for: 04-Jan-2024

Statewide Average: 35%

% of Normal for this Date



Calaveras Big Trees Weather Station, J. Toone December 2023

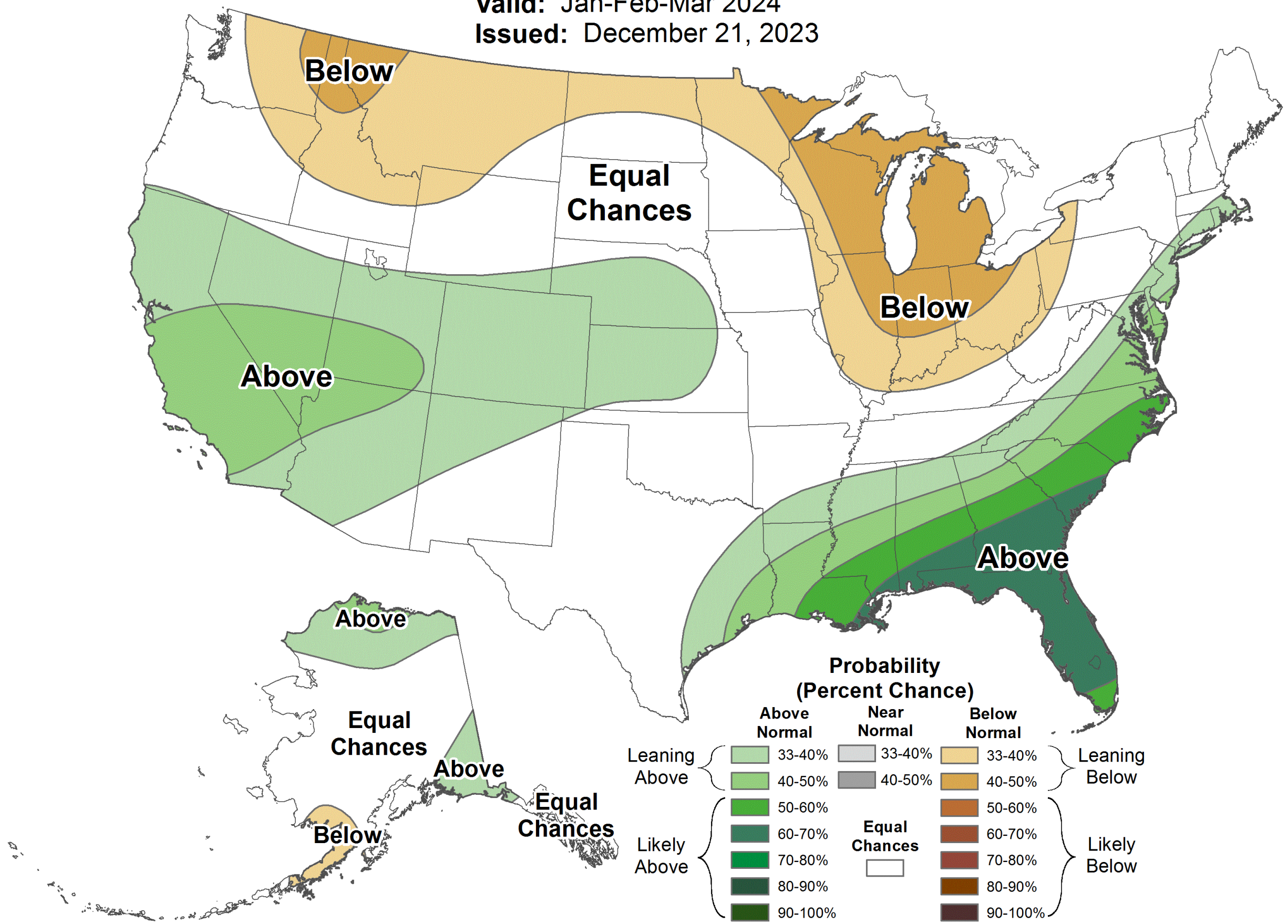
Precipitation Forecasts for Jan - Mar



Seasonal Precipitation Outlook



Valid: Jan-Feb-Mar 2024
Issued: December 21, 2023



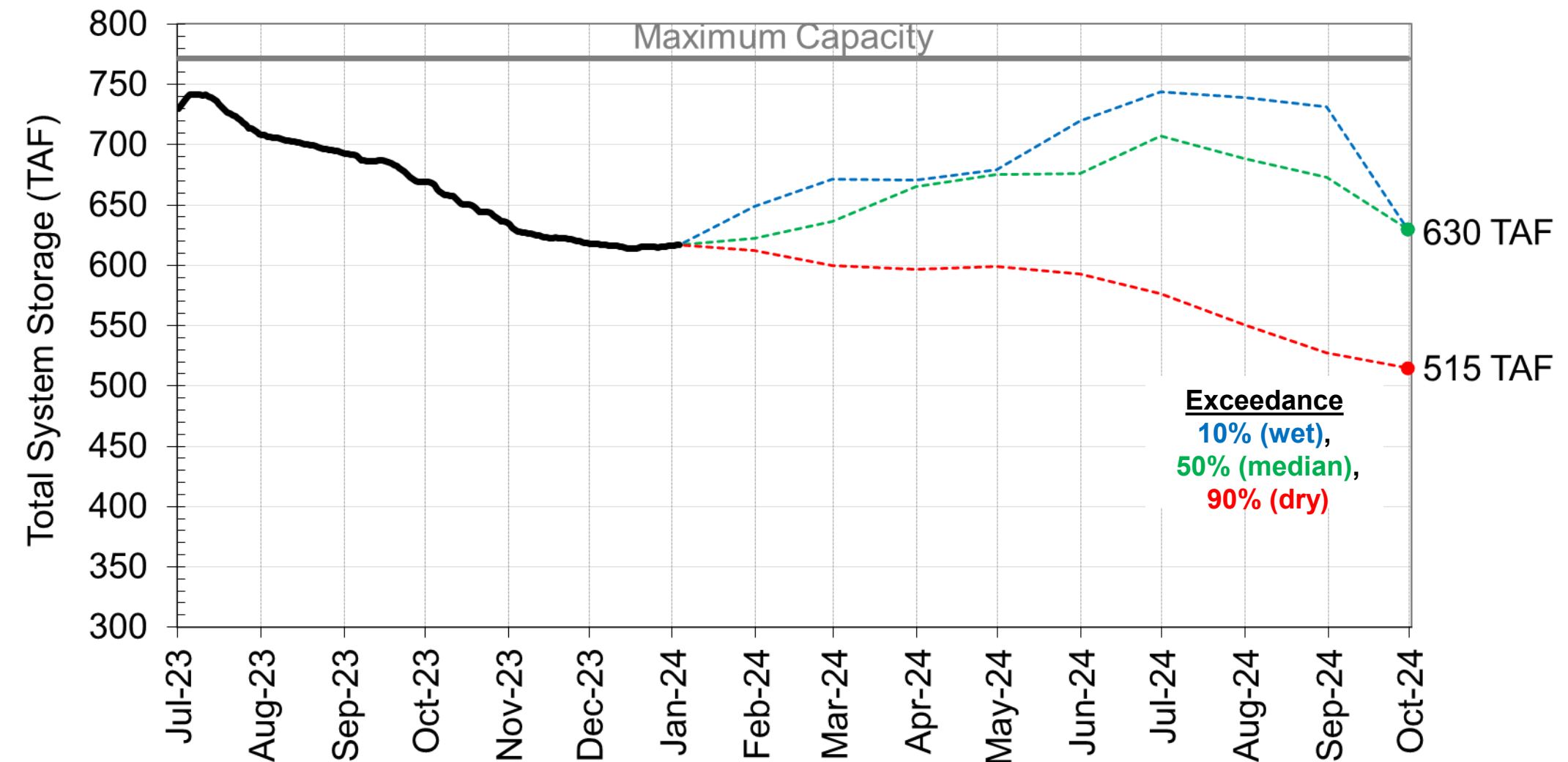
Water Supply Projections

Total System Storage as of Jan 3

Current: 617 TAF (111% of Average)

Reservoir	Current Storage, TAF	Percent of Average	Percent of Capacity
Pardee	177	99%	87%
Camanche	310	120%	74%
East Bay	130	108%	87%
Total System	617	111%	80%

End of September Storage Projections



TAF: Thousand Acre-Feet

Questions?



WATER SUPPLY ENGINEERING DAILY REPORT

Wednesday, January 3, 2024

RESERVOIR STORAGE AND ELEVATION

	<u>WATER SURFACE</u>		<u>STORAGE</u>		<u>MAXIMUM CAPACITY</u>		Release	Spill
	Elevatio n	+Gain	+Gain	Elevation	Storage	Release		
	Feet	-Loss	Ac-Ft	-Loss	Feet	Ac-Ft	Cfs	Cfs
<u>MOKELUMNE</u>								
Pardee	554.97	0.06	176760	120	567.65	203795	420	0
Camanche	220.21	0.03	310110	200	235.5	417120	330	0
<u>EAST BAY</u>								
Briones	572.96	0.02	56750	20	576.14	58960	0	0
Chabot	223.04	0.02	8970	10	227.25	10350	0	0
Lafayette	434.98	0.02	2620	0	449.16	4250	0	0
San Pablo	300.92	-0.01	28070	-10	313.68	37915	0	0
Upper San Leandro	453.26	0.11	<u>33960</u>	<u>80</u>	459.98	<u>38905</u>	0	0
<u>Total East Bay Res.</u>			<u>130370</u>	<u>100</u>		<u>150380</u>		
TOTAL SYSTEM STORAGE			617240	420		771295		

DISTRIBUTION SYSTEM		
<u>DISTRIBUTION RESERVOIRS</u>		
	Storage MG	Operating Capacity
Today	362	720
Total Previous Day	<u>337</u>	
Total Change	25	
<u>WATER PRODUCTION AND DEMAND</u>		
	Million Gallons	Capacity MGD
Lafayette WTP	0	25
Orinda WTP	81	190
San Pablo WTP	0	30
Sobrante WTP	31.6	50
Upper San Leandro WTP	0	45
Walnut Creek WTP	25.2	90
<u>TOTAL SURFACE PRODUCTION</u>	137.8	430
Miscellaneous(Estimated)	0.4	
<u>TOTAL WATER PRODUCTION</u>	<u>138.2</u>	
Change in Distribution System	25	
Wash Water from Distribution Sys.	0.5	
<u>SYSTEM DEMAND</u>		
East-of-Hills Demand	22.7	
West-of-Hills Demand	89.6	

MOKELUMNE SYSTEM		
<u>AQUEDUCT DELIVERIES</u>		
	MG	Flow Conditions
Line 1	34.9	THROTTLE
Line 2	37.6	THROTTLE
Line 3	<u>48.1</u>	<u>THROTTLE</u>
TOTAL	120.6	187 Cfs
<u>FSCC to MOK AQUEDUCTS (Measured at Brandt), MG</u>		
Mok 1	0	
Mok 2	<u>0</u>	
	0 MG	
<u>RIVER FLOWS AND RELEASES</u>		
		Cfs
Mokelumne River Natural Flow		330
Pardee Reservoir Inflow		638
Pardee Release to Camanche Res.		420
Pardee Release to JVID		15
Camanche Release to Mokel. River		330
<u>PG&E CO. STORAGE (Acre-feet)</u>		
	<u>Storage</u>	<u>Change</u>
		Maximum Capacity
Old Reservoirs	7707	-15
Salt Springs Res.	6400	2
Lower Bear Res.	<u>16229</u>	<u>-598</u>
Total	30336	-611

RAW WATER TRANSMISSION		
	INPUT	DRAFT
Briones Res.	0	0
San Pablo Res.	44	127
U. San Leandro Res.	0	0
TOTAL	44	127

PRECIPITATION (Inches)				
<u>STATION</u>	<u>THIS YEAR</u>		<u>AVERAGE YEAR</u>	
	<u>Today</u>	<u>Month</u>	<u>to-Date</u>	<u>to-Date</u>
USL WTP	0.13	0.48	5.11	10.09
Orinda WTP	0.28	0.95	9.37	12.13
Lafayette Reservoir	0.27	0.74	4.73	10.73
Walnut Creek WTP	0.17	0.66	4.68	8.77
Camp Pardee	0.56	1.46	5.27	7.88
Salt Springs P.H.	1.05	1.29	12.27	17.16

REMARKS
 WID Canal Diversion = 0 cfs
 Mokelumne River below WID = 290 cfs

PG&E data as of 4:00 pm previous date.
 All other data as of midnight.
 WTP capacities are sustainable rates.

<u>CAPLES LAKE (7,830 FT) DATA</u>		
	Today	Average
Snow Depth	25 Inches	40 Inches
Water Content	3.4 Inches	11.6 Inches