

EAST BAY MUNICIPAL UTILITY DISTRICT

DATE: March 17, 2022

MEMO TO: David J. Rehnstrom, Manager of Water Distribution Planning Division



FROM: Olujimi O. Yolooye, Director of Engineering and Construction



SUBJECT: Approval of Wildcat Aqueduct (El Cerrito) for the West of Hills Northern Pipelines Project

I approve implementation of the Wildcat Pipeline (El Cerrito) (Project) as detailed in the attached Addendum to the West of Hills Northern Pipelines Environmental Impact Report (EIR). The District's Board of Directors certified and approved the West of Hills Northern Pipelines EIR in December 2013. The attached Addendum evaluated Project changes which developed during detailed design.

The West of Hills Northern Pipelines EIR includes construction of four separate water transmission pipelines to correct existing system deficiencies and improve system reliability. The Project changes are to one of the four pipelines and include modifying the pipeline alignment for a segment of the Project. These changes do not result in new significant impacts or a substantial increase in the severity of previously identified significant impacts.

DJR:WTJ:grd

sb22_035 Wildcat Pipeline (El Cerrito) Addendum

Attachment: Addendum to the West of Hills Northern Pipelines Project Environmental Impact Report

cc: Tim McGowan
Winnie Jiang
Carlton Chan
Marshall McLeod
Gus Cicala
DOCS
WDPD Web Page
Chron

**EAST BAY MUNICIPAL UTILITY DISTRICT
ADDENDUM TO THE WEST OF HILLS NORTHERN PIPELINES PROJECT
ENVIRONMENTAL IMPACT REPORT**

INTRODUCTION

The Wildcat Pipeline (El Cerrito) Project (Project) is a project-level element certified in the West of Hills Northern Pipelines Project Environmental Impact Report (EIR) (DOCS #2137453). Changes were proposed to a portion of the Project's pipeline alignment during detailed design due to significant obstacles with constructability.

Pursuant to Section 15164 of the California Environmental Quality Act (CEQA) Guidelines, the lead agency shall prepare an addendum to a previously certified EIR if project changes or additions are necessary, but the changes do not result in new significant impacts or a substantial increase in the severity of the previously identified significant impacts as described in CEQA Guidelines Section 15162. An addendum does not need to be circulated for public review but should be included in the record and supported by substantial evidence.

CONCLUSION

Staff conducted an evaluation and determined that the changes do not result in new significant impacts or cause an increase in the severity of the previously identified significant effects as presented in the certified West of Hills Northern Pipelines EIR. The District will implement the same mitigation measures presented in the certified West of Hills Northern Pipelines EIR for the Project. No further environmental documentation is required.

PROJECT BACKGROUND

The District's Board of Directors certified and approved the West of Hills Northern Pipelines EIR in December 2013. The West of Hills Northern Pipelines EIR includes construction of four separate water transmission pipelines to correct existing transmission and storage operational deficiencies, meet future water demands, improve system reliability and water quality, and improve wintertime redundancy to facilitate facility outages necessary to replace or upgrade aging infrastructure. The four water transmission pipelines are located in the City of Berkeley in Alameda County and the Cities of El Cerrito, Richmond, and San Pablo in Contra Costa County.

Wildcat Pipeline (El Cerrito) Project

As identified in the West of Hills Northern Pipelines EIR, the approved Project includes construction of approximately 13,500 feet of 48-inch pipeline to be located in Hill Street, Richmond Street, Lincoln Avenue, Norvell Street, Fairmount Avenue, Behrens Street, C Street, Ashbury Avenue, and Lynn Avenue as shown in Exhibit A.

PROJECT CHANGES

The purpose of this addendum is to discuss the changes to the approved Project and to determine whether these changes generate new impacts or increase the significance of impacts identified in the West of Hills Northern Pipelines EIR.

During detailed design of the approved Project, alignment changes were made to avoid subsurface utility conflicts. For the approved Project, a trenchless installation would be required to cross the intersection of Fairmount Avenue and Norvell Street, and a box culvert on Behrens Street; however, no feasible sites for boring pits are available within the vicinity for both locations. In addition, a minimum of 1,500 feet of sewer pipeline and potable pipeline would need to be relocated on Norvell Street to construct the approved Project.

As shown in Exhibit A, the revised Project will be located on Hill Street, Richmond Street, Lincoln Avenue, Clayton Avenue, Central Avenue, Ashbury Avenue, and Lynn Avenue; where the revised portions of the alignment not previously analyzed in the EIR consist of 2,910 feet of pipeline located in Lincoln Avenue, Clayton Avenue, Central Avenue, and Ashbury Avenue. The total length of the approved Project (13,500 feet) is similar in length to the revised Project (13,650 feet) and the pipeline size (48-inch diameter) and material type (mortar-lined and plastic- or mortar-coated welded steel) will remain the same. The revised Project minimizes subsurface conflicts and does not require sewer or potable pipelines to be relocated. Although trenchless construction will be required in Ashbury Avenue to cross Fairmount Avenue, feasible sites for borings pits are available.

ENVIRONMENTAL EVALUATION

The West of Hills Northern Pipelines EIR evaluated the following environmental factors: aesthetics, air quality, biological resources, cultural resources, energy conservation, geology and soils, greenhouse gas emissions, hazards and hazardous materials, hydrology and water quality, noise, recreation, and transportation and traffic. The environmental analysis for the West of Hills Northern Pipelines EIR of the approved Project concluded that certain potential impacts from noise, transportation and traffic, and growth are significant and unavoidable, and a Statement of Overriding Considerations was approved by the Board. The West of Hills Northern Pipelines EIR provided mitigation measures to avoid or mitigate all other identified potential impacts to a less than significant level.

The impacts identified in the West of Hills Northern Pipelines EIR will remain the same since the nature of the work and geographical area for the revised Project is similar. All mitigation measures identified in the West of Hills Northern Pipelines EIR to reduce the temporary, construction-related impacts of the approved Project to a less-than-significant level will be applied to the revised Project as required. The EIR also identified mitigation measures to lessen significant and unavoidable impacts, and these mitigation measures will continue to be applied to the revised Project.

The revised Project was analyzed relative to the following pertinent environmental factors.

Aesthetic

Similar to the approved Project, the revised Project will be located underground and would not be visible to the public. While construction is proposed to occur during the daytime hours (8 am to 7 pm) on weekdays, nighttime work may be necessary for construction of the tie-ins to minimize service disruption. Implementation of Mitigation Measure AES-1, described in the West of Hills Northern Pipelines EIR, requires nighttime lighting to be of limited duration, shielded, and directed downward to the extent practical such that the light source is not directed toward residential areas reducing impacts from nighttime lighting to a less than significant level.

The new pipeline and construction corridor would be located to minimize impacts to trees and landscaping; however, construction would require the trimming of the limbs and roots of trees located within the public right-of-way, and removal of a tree in the trenchless installation pit location. Any removed trees would be replaced as required by Implementation of Mitigation Measure AES-2, described in the West of Hills Northern Pipelines EIR, requires any trees that are removed to be replaced reducing impacts from tree removal to a less than significant level.

No new significant impacts to Aesthetics will occur due to Project changes nor will any existing significant impacts become more severe with the implementation of the original mitigation measures.

Air Quality

Air emissions of the revised Project are expected to be similar or less than the approved Project because the revised Project is a similar length to the approved Project. Sensitive receptors to the revised Project are listed in Table 1. Implementation of Mitigation Measures, AIR-1a and AIR-1b, described in the West of Hills Northern Pipelines EIR requires incorporating BAAQMD-recommended *Basic Construction Mitigation Measures* into the contractor specifications for the Project; and utilizing haul truck vehicles with model years of 2010 or newer if two pipeline construction headings are undertaken concurrently, or if construction of Wildcat (Berkeley) and Wildcat (El Cerrito) occur at the same time to reduce emission levels below BAAQMD significant thresholds and thus reducing impacts to a less than significant level.

**TABLE 1
 Sensitive Receptors near Revised Project**

Facility	Location	Distance from Revised Project
Residential Uses	Entire Alignment	Adjacent
Harding Elementary School	7230 Fairmount Avenue	Adjacent
El Cerrito High School	540 Ashbury Avenue	Adjacent
Adela’s World of the Children Day Care	502 Clayton Street	Adjacent

No new significant impacts on Air Quality will occur due to Project changes nor will any existing significant impacts become more severe with the implementation of the original mitigation measures.

Biological Resources

Biological impacts to the revised Project are expected to be similar to the approved Project because any trees that are removed will be replaced. A tree survey was completed by Environmental Science Associates (ESA) in October 2021 for the modified portion of the alignment for the revised Project to document mature trees located within the public right-of-way, as shown in Exhibit B. No special status species were found in the survey. Overall, there are approximately 40 percent more street trees along the revised Project than the approved Project. Additionally, the new trenchless installation locations will require removal of a non-native tree that was not identified for the approved Project. Implementation of Mitigation Measure AES-2, described in the West of Hills Northern Pipelines EIR, requires any trees that are removed to be replaced reducing impacts from tree removal to a less than significant level. No other biological resources will be disturbed due to Project changes.

No new significant impacts on Biological Resources will occur due to Project changes nor will any existing significant impacts become more severe with the implementation of the original mitigation measures.

Cultural Resources

Cultural Resource impacts for the revised Project are expected to be similar to the approved Project because no cultural resources have been recorded along the revised Project alignment. EBMUD reviewed the EBMUD Archaeological Resources GIS Database which consists of a records search at the Northwest Information Center of the California Historical Resources Information System for known archaeological site locations, to identify cultural resources that intersect with the revised Project alignment. Based on the records search, there are no known historical resources, archaeological resources, tribal cultural resources, or human remains identified within a quarter-mile radius around the revised Project.

Although no cultural resources have been recorded along the revised Project alignment, implementation of Mitigation Measures CUL-1c, CUL-2a through 2d, and CUL-3, described in the West of Hills Northern Pipelines EIR, requires EBMUD to retain a qualified archaeologist, develop an archaeological research design and treatment plan, and consult a qualified archaeologist and Native American Tribal Representative if cultural resources are inadvertently discovered thus reducing impacts on Cultural Resources to a less than significant level.

No new significant impacts on Cultural Resources will occur due to Project changes nor will any existing significant impacts become more severe with the implementation of the original mitigation measures.

Energy Conservation

The construction duration of the revised Project will not be longer than the approved Project and will thereby use similar or less energy than the approved Project. As with the approved Project, the revised Project will improve the efficiency of the District's water distribution system. No mitigations are required.

No new significant impacts on Energy Conservation will occur due to Project changes nor will any existing significant impacts become more severe.

Geology and Soils

The revised Project is expected to have similar impacts to the approved Project because it is located in similar soils and will also not cross any active fault traces. A review of the United States Geological Survey's "Preliminary geologic map emphasizing bedrock formations in Contra Costa County, California" prepared by R. W. Graymer et al. (1996) indicated that the area of the revised Project is generally underlain by Quaternary deposits. Quaternary deposits are characterized by unconsolidated sediments which may include stream channel and floodplain deposits, beach sands, broken gravels and glacial drift. These deposits are not expected to include ultramafic or serpentinite rock types, which contain naturally occurring asbestos, along the alignment. Other potential impacts from geotechnical factors such as soil corrosivity, soil stability, soil seismicity, and soil expansion potential are similar to the approved Project. In addition, the revised Project alignment will not cross an active fault trace and will have low liquefaction and landslide susceptibility, and no mitigations are required.

No new significant impacts on Geology and Soils will occur due to Project changes nor will any existing significant impacts become more severe.

Greenhouse Gas Emissions

The overall duration of construction, types of construction activities, equipment usage, and number of vehicle trips throughout construction of the revised Project would remain similar to the approved Project. Due to continued advances in engine technology, GHG emissions from the revised Project would be similar to or less than those for the approved Project and no new conflict would occur with relevant GHG reduction plans and no mitigations are required.

No new significant impacts on Greenhouse Gas Emissions will occur due to Project changes nor will any existing significant impacts become more severe.

Hazards and Hazardous Materials

The revised Project is located outside of known hazard areas. There are no active hazardous material sites in the vicinity according to the Envirostor, GeoTracker, and Landwatch databases managed by the Department of Toxic Substances Control, State Water Resources Control Board,

and Terradex respectively. Additionally, the revised Project area is not designated as a high fire hazard area as indicated by the Cal Fire Local Agency Maps for Very High Fire Hazard Severity Zones. The revised Project is located more than 10 miles from the nearest airport, Oakland International Airport, and private airstrips.

Unknown hazards within the revised Project will be mitigated as specified in the EIR to prevent public and construction staff exposures during construction, operation, and maintenance. Similar to the approved Project, there are numerous hazardous waste material sites located within a quarter mile of the revised Project. EBMUD's Master Specifications, Environmental Requirements – Section 01 35 44 and Project Safety Requirements – Section 01 35 24 will be used to eliminate harmful exposure to contamination in soil and groundwater as required to a less than significant level.

There are no known high priority facilities in the area of the revised Project alignment including high-pressure natural gas pipelines, petroleum pipelines, pressurized sewage pipelines, high-voltage electric, fiber optic communication, and major water lines. Implementation of Mitigation Measures HAZ-1a through 1c, described in the West of Hills Northern Pipelines EIR, requires that conflicts with subsurface utilities will be identified and protected during excavation with notification to other utility owners reducing impacts to a less than significant level.

As described above under Air Quality, newly identified sensitive receptors (e.g., schools) are located within 0.25 miles of the revised Project. Concentrations of emissions may be slightly higher due to the closer proximity of a trenchless installation to sensitive receptors, but hazardous emissions from trenchless installations are well below risk thresholds as described in the West of Hills Northern Pipelines EIR. Children at nearby schools would not be subjected to hazards from emissions or handling of hazardous materials and no mitigations are required.

The revised Project is not located in any areas with known deposits and sediments containing naturally occurring asbestos. If asbestos is encountered, implementation of Mitigation Measure HAZ-2, described in the West of Hills Northern Pipelines EIR, will eliminate harmful exposure to asbestos dust as required reducing impacts to a less than significant level.

No new significant impacts on Hazards and Hazardous Materials will occur due to Project changes nor will any existing significant impacts become more severe with the implementation of the original mitigation measures.

Hydrology and Water Quality

The revised Project is located in the same watershed as the approved Project, El Cerrito Creek Watershed. Similar to the approved Project, the revised Project remains outside of the tsunami inundation zone and the 100- and 500-year flood hazard zones.

Pipeline construction methods, in accordance with EBMUD's Master Specifications, Environmental Requirements – Section 01 35 44 and stormwater permits for sedimentation,

erosion, pollutant and treated water discharge, and temporary alteration of drainage patterns, as described in the West of Hills Northern Pipelines EIR, apply to the revised Project. EBMUD's Leak Response Program would also apply to the revised Project in the case of a pipeline rupture.

No new significant impacts on Hydrology and Water Quality will occur due to Project change nor will any existing significant impacts become more severe.

Noise

Similar to approved Project, the revised Project will be located primarily in 2-lane residential streets carrying low level of traffic. Implementation of Mitigation Measures NOI-1, NOI-2, and NOI-3, described in the West of Hills Northern Pipelines EIR, establish time limits, administrative measures, source controls, and provisions for nighttime construction to reduce noise impacts. In addition, implementation of Mitigation Measure NOI-4, which establishes vibration thresholds and monitoring to prevent cosmetic damage to structures, will also be required for the revised Project. Pipeline construction activities in El Cerrito would utilize the same construction methods, generate similar noise, and affect similar noise-sensitive land uses compared to the approved Project. Although NOI-1 would be implemented to reduce impacts from noise, the impacts would remain significant and unavoidable, similar to the approved Project and would not be more severe than that analyzed in the West of Hills Northern Pipelines EIR.

No new significant impacts on Noise and Vibration will occur due to Project changes nor will any existing significant impacts become more severe with the implementation of the original mitigation measures.

Recreation

The approved Project temporarily obstructed entrance to Harding Park. The revised Project is adjacent to but does not obstruct the single entrance to Harding Park, therefore impacts will be less than the approved Project and no mitigations are required.

No new significant impacts on Recreation will occur due to Project changes nor will any existing significant impacts become more severe.

Transportation and Traffic

The revised Project will have less transportation and traffic impacts than the approved Project due to lower volumes of detoured traffic and fewer lane closures. W-Trans reviewed the revised Project alignment and assessed the potential transportation impacts associated with the change, as presented in Exhibit C. Based on the review, there would be no new significant impacts or any more severe significant impacts than reported in the West of Hills Northern Pipelines EIR. Detour routes for the revised Project in El Cerrito are shown in Exhibit C. Overall, road and lane closures for the revised Project would be fewer than those needed for the approved Project.

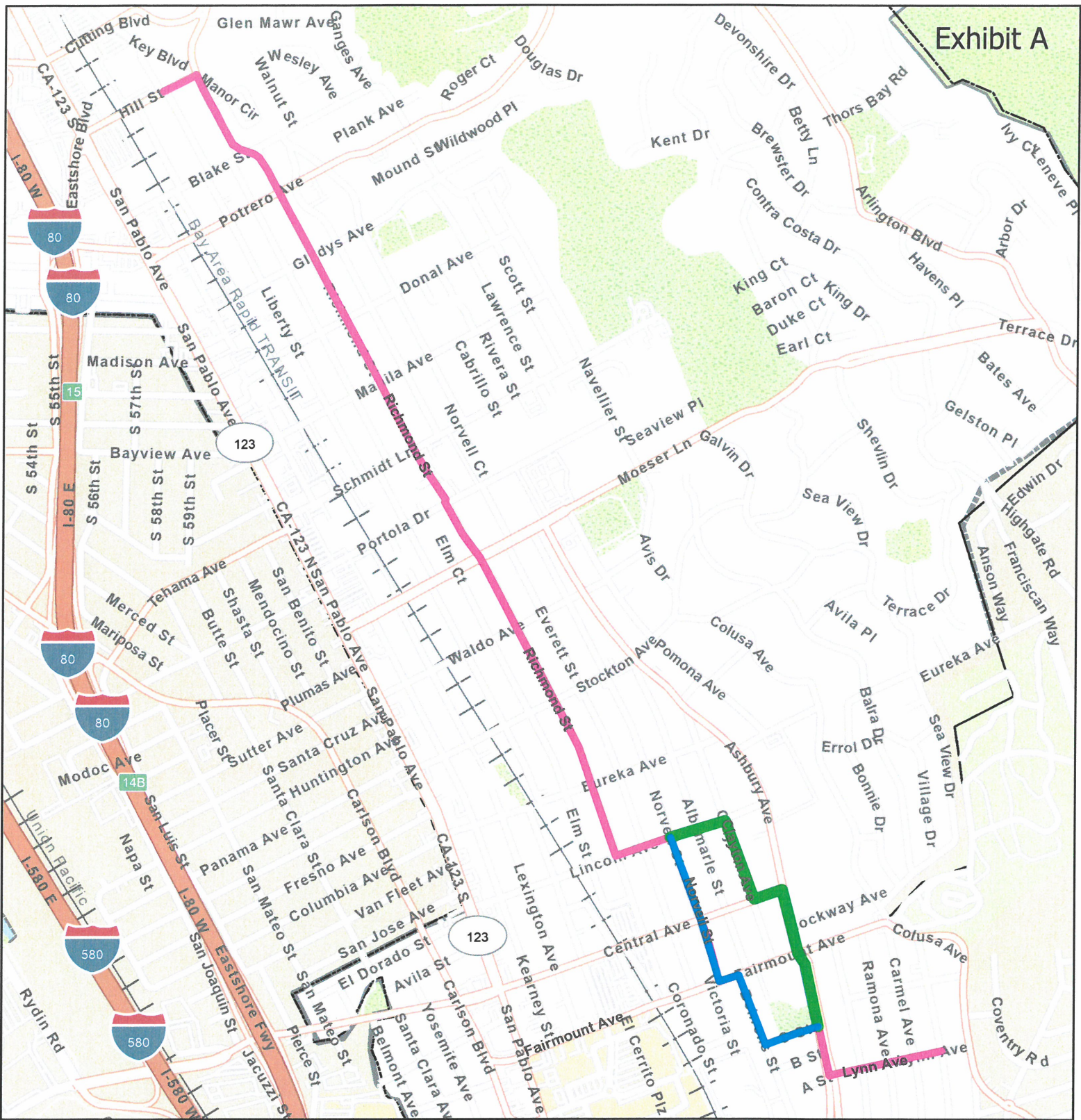
Furthermore, changes in the alignment would result in less detoured traffic compared to the approved Project because Fairmount Avenue, which carries in excess of 8,000 vehicles per day, would no longer be affected. With implementation of Mitigation Measure TRA-1b, described in the West of Hills Northern Pipelines EIR, closure of Fairmount Avenue for the approved Project resulted in significant and unavoidable impacts on traffic delay. By avoiding Fairmount Avenue, impacts associated with the revised Project will be less than the approved Project, but will potentially remain significant and unavoidable, similar to the approved Project.

Alternative modes of transportation will not be affected by the revised Project. There are no new bus lines or bus stops along the revised Project. All roadways have sidewalks on both sides which could be obstructed during construction, however implementation of Mitigation Measures TRA-2a through c and TRA-3, described in the West of Hills Northern Pipelines EIR, will provide advanced notification of construction, remove road blocks and cover open trenches at the end of the work day, ensure one sidewalk remains available for pedestrian use, and notifies and coordinates with transit agencies on potential transit changes reducing impacts to Transportation and Traffic to a less than significant level.

As with the approved Project, temporary and easily removable barricades will be utilized for partial and full road closures; therefore, construction will not significantly impede emergency access.

No new significant impacts on Transportation and Traffic will occur due to Project changes nor will any existing significant impacts become more severe with the implementation of the original mitigation measures.

Exhibits: A – Revised Project Plan
 B – Tree Survey Map
 C – Transportation and Traffic Evaluation

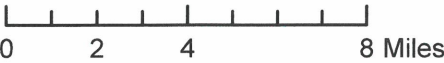


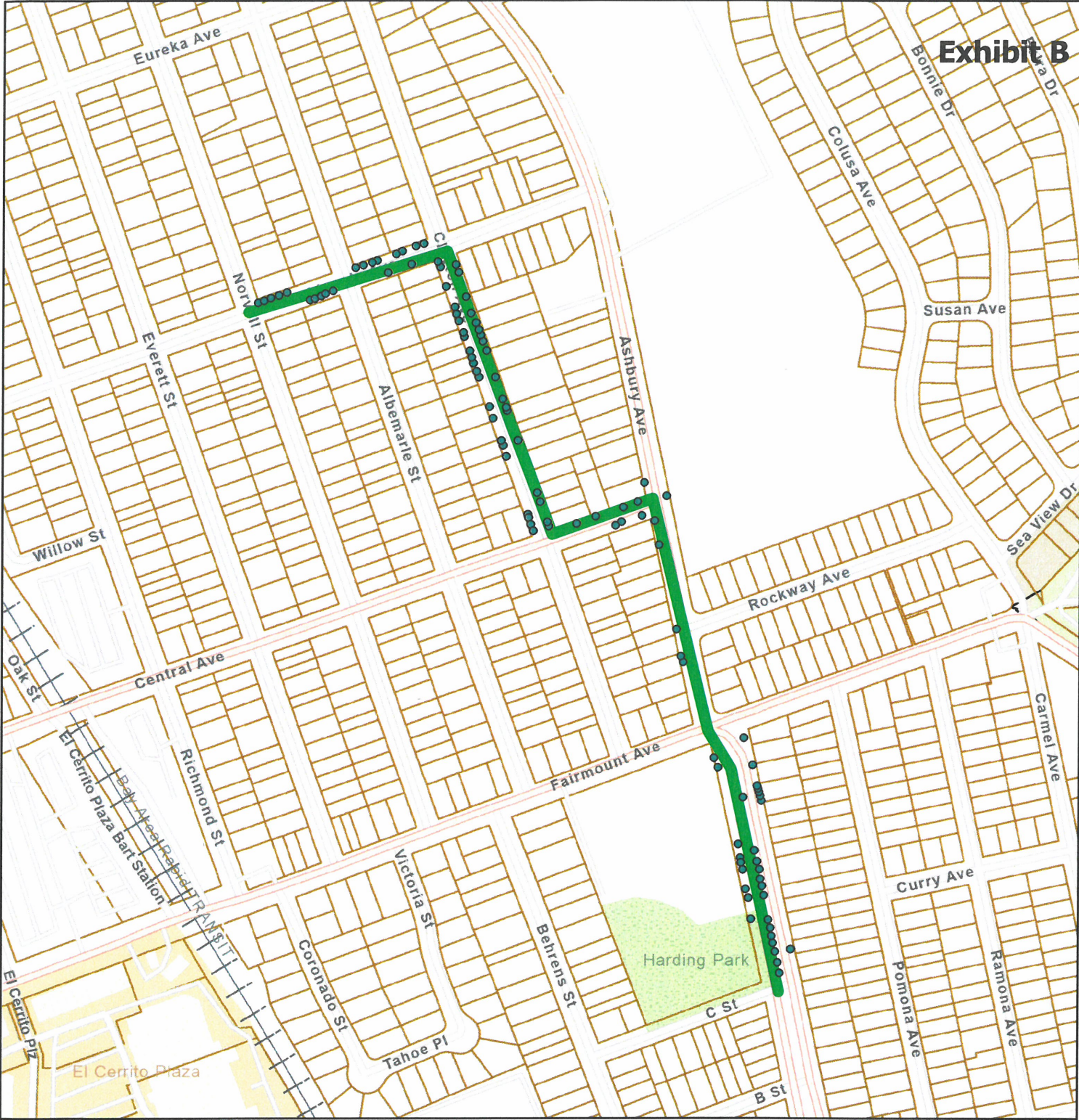
Wildcat Pipeline (El Cerrito)

- Legend**
- Approved Project
 - Revised Project
 - Wildcat Pipeline (El Cerrito)

Date Created: 12/14/2021

Author: Winnie Jiang



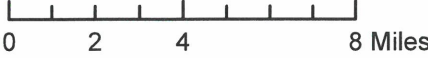


Wildcat Pipeline (El Cerrito) Tree Survey

- Legend**
- Revised Project Street Trees
 - █ Revised Project

Date Created: 12/14/2021

Author: Winnie Jiang



Addendum to Wildcat Pipeline (El Cerrito) Tree Survey

FID	Shape	ID	DBH	Height	Canopy	RootNotes	TrunkNotes	CanopyNote	HardscapeN	TreeRating	created_us	created_da	last_edt_1	SpCommonNa	SpScientif	AgDBH	RPZ
103	Point	0	0	0	0					2 Poor	Pet_BIO	10/27/2021	10/27/2021	Shrub - Oleander	Shrub - Oleander	0	0
104	Point	0	0	0	0					2 Poor	Pet_BIO	10/27/2021	10/27/2021	Shrub - Oleander	Shrub - Oleander	0	0
58	Point	0	1	5	1	Root collar exposed, small planter space, vegetation on base	Old pruning cuts with some callous, seam with callous, epicormic sprouts	Topped, very poor pruning cuts with little callous, very poor leaf surface	Pavers up to 3 inches from base, uplifting curb	1 Very Poor	Pet_BIO	10/27/2021	10/27/2021	Maidenhair tree	Ginkgo biloba	1	3
68	Point	0	1	8	2	Root collar good, good planter size	Staked and guyed, good	Good leaf surface	Cracked curb	5 Excellent	Pet_BIO	10/27/2021	10/27/2021	Olive tree	Olea europaea	1	3
102	Point	0	1	8	2	Root collar okay, just planted, mulch up to base	Good, epicormic sprouts	Okay, good leaf surface	Good size planter space	3 Moderate	Pet_BIO	10/27/2021	10/27/2021	Japanese maple	Acer palmatum	1	3
47	Point	0	1.5	7	2	Large planter space, root collar okay	Staked and guyed, okay	epicormic sprouts, poor leaf surface, deciduous- hard to tell canopy health	Good size planter space, cracked curb	3 Moderate	Pet_BIO	10/27/2021	10/27/2021	Eastern redbud	Cercis canadensis	2	3
72	Point	0	10	21	7	Root collar exposed, good size planter space, surface roots exposed with mechanical damage and callous	Old pruning cuts with some callous and decay, partly closed seam with bark cracking	Poor leaf surface, power lines through canopy, poor old pruning cuts with with some callous and decay, topped, epicormic sprouts	Good size planter space	1 Very Poor	Pet_BIO	10/27/2021	10/27/2021	American Sweetgum	Liquidambar styraciflua	10	3
74	Point	0	10	22	10	Root collar exposed, good size planter space, surface roots exposed with mechanical damage and callous	Old pruning cuts with some callous and decay	Good leaf surface, power lines through canopy, old pruning cuts with with some callous and decay, topped, epicormic sprouts	Good size planter space	3 Moderate	Pet_BIO	10/27/2021	10/27/2021	American Sweetgum	Liquidambar styraciflua	10	3
26	Point	0	10 at base	11	3	Root collar buried, small planter space	Numerous trunks at base, epicormic sprouts, small dead wood, pruned as shrub	Epicormic sprouts, pruned as shrub, good leaf surface, topped?, under power lines	Cracked curb, small planter cut out	3 Moderate	Pet_BIO	10/19/2021	10/19/2021	Bottlebrush	Callistemon sp	10	3
131	Point	0	10 at base	11	3	Root collar buried, small planter space	Numerous trunks at base, epicormic sprouts, small dead wood, pruned as shrub	Epicormic sprouts, pruned as shrub, good leaf surface, topped?, under power lines	Cracked curb, small planter cut out	3 Moderate	Pet_BIO	10/19/2021	10/19/2021	Bottlebrush	Callistemon sp	10	3
33	Point	0	11	19	14	Surface roots exposed, small mechanical damage with callous, root collar exposed	Mechanical damage with complete callous to north, some sloughing bark, codominant leader at 6 and 7 feet, included bark, epicormic sprouts	Good leaf surface, narrow angle attachments, epicormic sprouts, under power lines	Cracked sidewalk and curb, large planting space	3 Moderate	Pet_BIO	10/27/2021	10/27/2021	Goldenrain tree	Koeleruteria bipinnata	11	3

44	Point	0	11	28	16	Root collar slightly exposed, okay	Good, codominant leader at 7 and 8 feet, included bark, old leader removed at 6 feet, decay and no callous, epicormic sprouts	epicormic sprouts, small dead woos, good leaf surface, small pruning cuts with little callous	Cracked curb and gutter, sidewalk slightly uplifting, good sized planter space	3 Moderate	Pet_BIO	10/27/2021	10/27/2021	Chinese hackberry	Celtis sinensis	11	3
24	Point	0	11 at base	11	3	Root collar buried, small planter space	Numerous trunks at base, epicormic sprouts, small dead wood, pruned as shrub	Epicormic sprouts, pruned as shrub, good leaf surface, topped?, under power lines	Cracked curb, uplift sidewalk, small planter cut out	3 Moderate	Pet_BIO	10/19/2021	10/19/2021	Bottlebrush	Callistemon sp	11	3
25	Point	0	11 at base	11	3	Root collar buried, small planter space	Numerous trunks at base, epicormic sprouts, small dead wood, pruned as shrub	Epicormic sprouts, pruned as shrub, good leaf surface, topped?, under power lines	Cracked curb, small planter cut out	3 Moderate	Pet_BIO	10/19/2021	10/19/2021	Bottlebrush	Callistemon sp	11	3
129	Point	0	11 at base	11	3	Root collar buried, small planter space	Numerous trunks at base, epicormic sprouts, small dead wood, pruned as shrub	Epicormic sprouts, pruned as shrub, good leaf surface, topped?, under power lines	Cracked curb, uplift sidewalk, small planter cut out	3 Moderate	Pet_BIO	10/19/2021	10/19/2021	Bottlebrush	Callistemon sp	11	3
130	Point	0	11 at base	11	3	Root collar buried, small planter space	Numerous trunks at base, epicormic sprouts, small dead wood, pruned as shrub	Epicormic sprouts, pruned as shrub, good leaf surface, topped?, under power lines	Cracked curb, small planter cut out	3 Moderate	Pet_BIO	10/19/2021	10/19/2021	Bottlebrush	Callistemon sp	11	3
86	Point	0	11.1 4	14	12	Root collar okay, surface roots exposed with mechanical damage and callous, girdling root	Codominant leader at base, cavity, laterals with narrow angle attachments, closed seams	Topped, poor cuts, epicormic sprouts, no callous, poor leaf surface, poor structure, under power lines	Uplifting sidewalk, cracked curb	2 Poor	Pet_BIO	10/27/2021	10/27/2021	Australian blackwood	Acacia melanoxylon	25	6.3
53	Point	0	11.5	20	12	Root collar slightly buried, grass up to trunk, good planter space	Good, large laterals at 4 feet, small old pruning cuts with callous	Good leaf surface, okay structure, epicormic sprouts, ver minimal amounts of old pruning cuts	Good size planter space, uplifting curb, cracked and uplifting sidewalk	4 Good	Pet_BIO	10/27/2021	10/27/2021	Southern magnolia	Magnolia grandiflora	12	3
35	Point	0	12	22	12	Root collar exposed, planted in hole, abnormal trunk flare	Seam to west from base to 6 feet, closed, codominant stems at 6 and 7 feet, included bark	Fair leaf surface, epicormic sprouts, small dead woos, under power lines, recent branch rip out, with no callous	Fair planter space, adjacent to power pole and fire hydrant, cracked curb	2 Poor	Pet_BIO	10/27/2021	10/27/2021	Calgary pear	Pyrus calleryana	12	3
43	Point	0	12	28	16	Root collar slightly exposed	Good, codominant leader at 6 and 7 feet, included bark, old leader removed at 5 feet, decay and cavity with ants	Old pruning cuts with little to no callous, epicormic sprouts, lion tailed, communication line through canopy, poor leaf surface	Cracked curb and uplifting, sidewalk cracked, good sized planter space	2 Poor	Pet_BIO	10/27/2021	10/27/2021	Chinese hackberry	Celtis sinensis	12	3

59	Point	0	12	26	15	Root collar okay, grass up to trunk, good planter space, small surface roots with mechanical damage and callous	Okay, numerous old pruning cuts with callous and decay to raise canopy	Good leaf surface, okay structure, epicormic sprouts, narrow angle attachments, minimal amounts of old pruning cuts	Good size planter space, uplifting curb, cracked and uplifting sidewalk	4 Good	Pet_BIO	10/27/2021	10/27/2021	Southern magnolia	Magnolia grandiflora	12	3
60	Point	0	12	24	12	Root collar okay, grass up to trunk, epicormic sprouts, good planter space, small surface roots with mechanical damage and callous	Seam with black ooze/fungi?, epicormic sprouts, numerous old pruning cuts with callous and decay to raise canopy	Good leaf surface, okay structure, epicormic sprouts, narrow angle attachments, minimal amounts of old pruning cuts	Good size planter space, uplifting gutter and road, uplifting sidewalk	3 Moderate	Pet_BIO	10/27/2021	10/27/2021	Southern magnolia	Magnolia grandiflora	12	3
75	Point	0	12	24	7	Root collar buried, small size planter space	Old pruning cuts with some callous and decay, large lateral at 4 feet	Good leaf surface, power lines through canopy, canopy leans to west, suppressed, old pruning cuts with some callous and decay, topped, epicormic sprouts	Small size planter space, uplifting sidewalk, cracked drive way, cracked curb	3 Moderate	Pet_BIO	10/27/2021	10/27/2021	American Sweetgum	Liquidambar styraciflua	12	3
79	Point	0	12	36	7	Root collar exposed, surface roots exposed, large girdling roots, good size planter space	Old poor pruning cuts with some callous and large decay, suppressed	Poor leaf surface, old pruning cuts with some callous and decay, topped, small and large dead wood- deciduous hard to tell canopy health	Good size planter space, uplifting curb, cracked sidewalk, cracked ramp	2 Poor	Pet_BIO	10/27/2021	10/27/2021	American Sweetgum	Liquidambar styraciflua	12	3
61	Point	0	12.5	26	15	Root collar okay, small girdling root, small planter space	Okay, numerous old pruning cuts with callous and decay to raise canopy, large laterals at 5 feet, epicormic sprouts	Good leaf surface, okay structure, dead and live epicormic sprouts, narrow angle attachments, minimal amounts of old pruning cuts, communication lines in canopy	Small size planter space, uplifting curb, cracked and uplifting drive way ramp	3 Moderate	Pet_BIO	10/27/2021	10/27/2021	Southern magnolia	Magnolia grandiflora	12	3
83	Point	0	13	12	5	Root collar not visible due to juniper shrubs completely around base	Trunk mostly not visible due to juniper shrubs, codominant leader at 3 feet into many, included bark, epicormic sprouts	Poor old pruning cut, topped with frayed edges, epicormic sprouts, fair leaf surface, under power lines	Uplifting sidewalk, cracked curb, cracked asphalt	2 Poor	Pet_BIO	10/27/2021	10/27/2021	American Sweetgum	Liquidambar styraciflua	13	3.3
84	Point	0	13	14	7	Root collar not visible due to juniper shrubs completely around base	Trunk mostly not visible due to juniper shrubs, codominant leader at 5 feet into many, included bark, epicormic sprouts	Poor old pruning cut, topped with frayed edges, epicormic sprouts, fair leaf surface, under power lines	cracked curb, good size planter space	2 Poor	Pet_BIO	10/27/2021	10/27/2021	American Sweetgum	Liquidambar styraciflua	13	3.3
49	Point	0	13.1 2	24	15	Bulge at base, epicormic sprouts trimmed, plants at base, filled planter space, turkey tail fungi in numerous spots, large cavity with decay	codominant leader 1 foot and 3.4 feet, with included bark, water pooling in crotch, abnormal trunk shape, seams with heart rot and decay	Large laterals, "u" shaped crotch, old pruning cuts with some callous, epicormic sprouts, majority of canopy, heading cuts, fair leaf surface	In small planter, filled space, uplifting and cracked sidewalk, cracked curb and gutter	3 Moderate	Pet_BIO	10/27/2021	10/27/2021	Olive tree	Olea europaea	25	6.3

6	Point	0	14	28	12	Root collar exposed, buried	Good, codominant leader at 5 feet into 3, "u" shaped crotch	Poor leaf surface, small dead canopy, old pruning cuts with some callous and decay, numerous heading cuts, many rip outs from trucks with small callous and heart rot	In good planter size, small amount of sidewalk cracking	2 Poor	Pet_BIO	10/19/2021	10/19/2021	Camphor tree	Cinnamomum camphora	14	3.5
36	Point	0	14	26	10	Root collar exposed, small planter space	Okay, codominant stems at 5 feet into many, included bark, large laterals removed with minimal callous, epicormic sprouts	Epicormic sprouts, canopy leans to west, old pruning cuts with some callous, good leaf surface, under power lines cracked, curb and gutter cracked	Too small planter space, sidewalk uplifting and cracked, curb and gutter cracked	3 Moderate	Pet_BIO	10/27/2021	10/27/2021	Maidenhair tree	Ginkgo biloba	14	3.5
73	Point	0	14	25	10	Root collar exposed, good size planter space, numerous surface roots exposed with mechanical damage and callous	Old pruning cuts with some callous and decay, epicormic sprouts	Good leaf surface, power lines through canopy, old pruning cuts with some callous and decay, topped, epicormic sprouts	Good size planter space	3 Moderate	Pet_BIO	10/27/2021	10/27/2021	American Sweetgum	Liquidambar styraciflua	14	3.5
77	Point	0	14	36	16	Root collar exposed, surface roots exposed, girdling roots, good size planter space	Old pruning cuts with some callous and decay, no limbs to west, suppressed	Poor leaf surface, old pruning cuts with some callous and decay, epicormic sprouts, small dead wood- deciduous hard to tell canopy health	Good size planter space, uplifting and cracked sidewalk, cracked curb	2 Poor	Pet_BIO	10/27/2021	10/27/2021	American Sweetgum	Liquidambar styraciflua	14	3.5
111	Point	0	14	28	12	Root collar buried	Good, codominant leader at 5 feet into 3, "u" shaped crotch	Poor leaf surface, small dead canopy, old pruning cuts with numerous heading cuts, many rip outs from trucks with small callous and heart rot	In good planter size, small amount of sidewalk cracking	2 Poor	Pet_BIO	10/19/2021	10/19/2021	Camphor tree	Cinnamomum camphora	14	3.5
7	Point	0	14.5	23	14	Root collar good	Good, bulge at 2 feet, codominant leader at 7 feet, "u" shaped crotch	Very Poor leaf surface, small dead wood, powerline through canopy, old pruning cuts with some callous and decay, most of canopy is epicormic sprouts	In good planter size, small amount of sidewalk cracking	2 Poor	Pet_BIO	10/19/2021	10/19/2021	Camphor tree	Cinnamomum camphora	14	3.5
112	Point	0	14.5	23	14	Root collar good	Good, bulge at 2 feet, codominant leader at 7 feet, "u" shaped crotch	Very Poor leaf surface, small dead wood, powerline through canopy, old pruning cuts with some callous and decay, most of canopy is epicormic sprouts	In good planter size, small amount of sidewalk cracking	2 Poor	Pet_BIO	10/19/2021	10/19/2021	Camphor tree	Cinnamomum camphora	14	3.5

10	Point	0	15	24	13	Root collar has decay and damage from landscaping, cut epicormic sprouts	Numerous large old pruning cuts with some callous and decay, codominant leader at 10 feet, included bark	Fair leaf surface, epicormic sprouts, small dead wood	In median strip	2 Poor	Pet_BIO	10/19/2021	10/19/2021	Southern magnolia	Magnolia grandiflora	15	3.8
23	Point	0	15	17	5	Root collar exposed, small planter space, filled, roots growing over curb and sidewalk	Numerous seams, abnormal trunk shape, mechanical damage with heartrot and little callous at base, old poor pruning cuts with frayed edges, codominant leaders at 6 feet	Epicormic sprouts, pruned as shrub, good leaf surface, topped?, under power lines	Cracked curb, uplift sidewalk, small planter cut out, tree has filled space	3 Moderate	Pet_BIO	10/19/2021	10/19/2021	Bottlebrush	Callistemon sp	15	3.8
71	Point	0	15	27	12	Root collar exposed, good size planter space, surface roots exposed with mechanical damage and callous	Old pruning cuts with some callous and decay, closed seam, epicormic sprouts	Good leaf surface, power lines through canopy, old pruning cuts with some callous and decay, topped, epicormic sprouts	Good size planter space	3 Moderate	Pet_BIO	10/27/2021	10/27/2021	American Sweetgum	Liquidambar styraciflua	15	3.8
115	Point	0	15	24	13	Root collar has decay and damage from landscaping, cut epicormic sprouts	Numerous large old pruning cuts with some callous and decay, codominant leader at 10 feet, included bark	Fair leaf surface, epicormic sprouts, small dead wood	In median strip	2 Poor	Pet_BIO	10/19/2021	10/19/2021	Southern magnolia	Magnolia grandiflora	15	3.8
128	Point	0	15	17	5	Root collar exposed, small planter space, filled, roots growing over curb and sidewalk	Numerous seams, abnormal trunk shape, mechanical damage with heartrot and little callous at base, old poor pruning cuts with frayed edges, codominant leaders at 6 feet	Epicormic sprouts, pruned as shrub, good leaf surface, topped?, under power lines	Cracked curb, uplift sidewalk, small planter cut out, tree has filled space	3 Moderate	Pet_BIO	10/19/2021	10/19/2021	Bottlebrush	Callistemon sp	15	3.8
22	Point	0	15.5	23	15	Root collar not visible due to shrubs at base	Trunk good, old pruning cuts with complete callous, codominant leader at 6 feet, included bark	Large laterals removed with poor cuts and no callous and decay, epicormic sprouts, Good leaf surface, epicormic sprouts, small dead wood	In median strip	3 Moderate	Pet_BIO	10/19/2021	10/19/2021	Southern magnolia	Magnolia grandiflora	16	4
127	Point	0	15.5	23	15	Root collar not visible due to shrubs at base	Trunk good, old pruning cuts with complete callous, codominant leader at 6 feet, included bark	Large laterals removed with poor cuts and no callous and decay, epicormic sprouts, Good leaf surface, epicormic sprouts, small dead wood	In median strip	3 Moderate	Pet_BIO	10/19/2021	10/19/2021	Southern magnolia	Magnolia grandiflora	16	4

93	Point	0	16.5	19	12	Bulge at base, epicormic sprouts trimmed, filled planted space growing over hard scape	codominant leader removed, next leader at 4 feet, included bark, abnormal trunk shape	3 feet old pruning cuts with some callous, epicormic sprouts, narrow angle attachments, small and large dead wood, fair leaf surface	In small planter, filled space, uplifting sidewalk	2 Poor	Pet_BIO	10/27/2021	10/27/2021	Olive tree	Olea europaea	16	4
2	Point	0	17	22	12	Root collar good	Trunk good, old pruning cuts with complete callous and some with no leader at 7 feet, "u" shaped crotch	Poor leaf surface, epicormic sprouts, small dead wood	In median strip	2 Poor	Pet_BIO	10/18/2021	10/18/2021	Southern magnolia	Magnolia grandiflora	17	4.3
107	Point	0	17	22	12	Root collar good	Trunk good, old pruning cuts with complete callous, codominant leader at 7 feet, "u" shaped crotch	Poor leaf surface, epicormic sprouts, small dead wood	In median strip	2 Poor	Pet_BIO	10/18/2021	10/18/2021	Southern magnolia	Magnolia grandiflora	17	4.3
76	Point	0	18	36	16	Root collar exposed, surface roots exposed, girdling roots, good size planter space	Old pruning cuts with some callous and decay, codominant leaders at 12 and 13 feet, included bark	Good leaf surface, old pruning cuts with some callous and decay, epicormic sprouts	Good size planter space, uplifting sidewalk, cracked curb	3 Moderate	Pet_BIO	10/27/2021	10/27/2021	American Sweetgum	Liquidambar styraciflua	18	4.5
80	Point	0	18	36	18	Root collar exposed, surface roots exposed with mechanical damage and some callous and decay, large girdling roots, good size planter space	Old pruning cuts with some callous and decay	Good leaf surface, large laterals, narrow angle with some callous and decay, epicormic sprouts	Good size planter space, uplifting sidewalk, cracked curb	3 Moderate	Pet_BIO	10/27/2021	10/27/2021	American Sweetgum	Liquidambar styraciflua	18	4.5
31	Point	0	2	8	3	Root collar okay, pavers around base	Small mechanical damage with complete callous, guved okay	Good leaf surface, good structure, under power lines	Good size planter space with pavers	3 Moderate	Pet_BIO	10/27/2021	10/27/2021	Chinese pistache	Pistacia chinensis	2	3
32	Point	0	2	8	3	Root collar buried, pavers around base	Poor pruning cuts on street side with little callous, guved okay	Good leaf surface, good structure, under power lines	Good size planter space with pavers	3 Moderate	Pet_BIO	10/27/2021	10/27/2021	Chinese pistache	Pistacia chinensis	2	3
46	Point	0	2	7	2	Large planter space, root collar abnormal shape, likely due to landscaping damage, epicormic sprouts	Large laterals at 6 feet, included bark	old pruning cuts with some callous, epicormic sprouts, poor leaf surface, deciduous-hard to tell canopy health	Good size planter space	2 Poor	Pet_BIO	10/27/2021	10/27/2021	Eastern redbud	Cercis canadensis	2	3
57	Point	0	2	5	1	Root collar buried, small planter space, vegetation on base	Old pruning cuts with complete callous, good	Topped, very poor pruning cuts with little callous, very poor leaf surface	Pavers up to 6 inches from base, cracked curb	1 Very Poor	Pet_BIO	10/27/2021	10/27/2021	Prunus sp	Prunus spp	2	3
101	Point	0	2 at base	5	2	Root collar okay, just planted	Codominant leader at .5 feet into 3	Okay, fair leaf surface	Good size planter space	3 Moderate	Pet_BIO	10/27/2021	10/27/2021	Maidenhair tree	Ginkgo biloba	2	3

98	Point	0	2, 1, 1	6	3	Small soil pile at base, root collar slightly buried, codominant stems at base	Old small pruning cuts with little callous	Good leaf surface	On going sidewalk replacement	Pet_BIO	10/27/2021	10/27/2021	Eastern redbud	Cercis canadensis	4	3
97	Point	0	2, 2,1	7	5	Dirt pile at base, root collar buried, codominant stems at base	Old small pruning cuts with little callous	Good leaf surface	17m going sidewalk replacement	Pet_BIO	10/27/2021	10/27/2021	Eastern redbud	Cercis canadensis	5	3
70	Point	0	2, 3 at 2 feet	8	6	Large planter space, root collar buried, numerous epicormic sprouts, vegetation at base	Codominant stems at 1.5 feet, included bark, old leader removed at base with decay and callous, suppressed	old pruning cuts with some callous, good leaf surface, small dead wood, under power lines	Good size planter space, cracked curb, cracked sidewalk	Pet_BIO	10/27/2021	10/27/2021	Shrub - Chinese fringe flower	Shrub - Chinese fringe flower	5	0
69	Point	0	2, 5	14	6	Large planter space, root collar slightly buried, vegetation at base	Codominant stems at 6 feet, included bark, trunk leans to east, suppressed	old pruning cuts with some callous, poor leaf surface, deciduous- hard to tell canopy health, under power lines, canopy leans to east	Good size planter space, cracked curb	Pet_BIO	10/27/2021	10/27/2021	Eastern redbud	Cercis canadensis	2	3
12	Point	0	20	22	14	Root collar has decay and damage from landscaping, with some callous, surface roots with major decay and landscaping damage	Numerous large old pruning cuts with complete callous, codominant leader at 5, 6, 8 feet, included bark, epicormic sprouts	Fair leaf surface, epicormic sprouts, small dead wood, numerous rip outs with severe decay, several hangers 3 inches dbh	In median strip	Pet_BIO	10/19/2021	10/19/2021	Southern magnolia	Magnolia grandiflora	20	5
38	Point	0	20	29	17	Root collar okay, bulging up in planter space, small surface roots exposed with mechanical damage, one large surface root okay	codominant stems at 7 feet into 3, "u" shaped crotch	Poor leaf surface, epicormic sprouts, under power lines, major heading cuts on over 50 percent of canopy	Good planter space, adjacent to power pole anchor, cracked curb, uplifting gutter, uplifting sidewalk	Pet_BIO	10/27/2021	10/27/2021	Camphor tree	Cinnamomum camphora	20	5
62	Point	0	20	30	15	Root collar exposed, large structural root exposed, vegetation at base, pge box within 4 feet of base	Okay, codominant stems at 5 feet into many, included bark, main stems removed with decay and some callous, epicormic sprouts, ivy growing up trunk	Numerous power lines through canopy, good leaf surface, narrow angle attachments, epicormic sprouts, small old pruning cuts with no callous, heading cuts	3 Moderate	Pet_BIO	10/27/2021	10/27/2021	Goldenrain tree	Koelreuteria bipinnata	20	5
63	Point	0	20	30	15	Root collar slightly buried to the west, vegetation at base	Closed seam, codominant stems at 6 feet into 3, included bark, epicormic sprouts	Numerous power lines through canopy, good leaf surface, narrow angle attachments, epicormic sprouts, old pruning cuts with no callous, heading cuts on most limbs	Uplifting sidewalk, cracked and uplifting curb and sidewalk	Pet_BIO	10/27/2021	10/27/2021	Goldenrain tree	Koelreuteria bipinnata	20	5

95	Point	0	20	30	15	Small planter space, surface roots exposed	Seam with partial callous, codominant leader at 8 feet, "u" shaped crotch	Old pruning cuts with some callous and decay, epicormic sprouts, communication lines through canopy, good leaf surface	Small planter space, uplifting sidewalk, driveway and curb	3 Moderate	Pet_BIO	10/27/2021	10/27/2021	Australian bush cherry	Syzygium paniculatum	20	5
117	Point	0	20	22	14	Root collar has decay and damage from landscaping, with some callous, surface roots with major decay and landscaping damage	Numerous large old pruning cuts with complete callous, codominant leader at 5, 6, 8 feet, included bark, epicormic sprouts	Fair leaf surface, epicormic sprouts, small dead wood, numerous rip outs with severe decay, several hangers 3 inches dbh	In median strip	2 Poor	Pet_BIO	10/19/2021	10/19/2021	Southern magnolia	Magnolia grandiflora	20	5
40	Point	0	21.5	30	22	Root collar okay, bulging up in planter space, many surface roots exposed with mechanical damage, uplifted 2 feet from curb	codominant stems at 7 feet into many, "u" shaped crotch and included bark, leaders removed with some callous and decay	Fair leaf surface, epicormic sprouts, power lines through canopy, lion tailed, old pruning cuts with various callous stages	Good planter space, cracked and uplifting gutter, uplifting sidewalk	3 Moderate	Pet_BIO	10/27/2021	10/27/2021	Camphor tree	Cinnamomum camphora	22	5.5
8	Point	0	22.5	26	16	Root collar good	Abnormal trunk shape, bulge at 3 feet, codominant leader at 7 feet, "u" shaped crotch, cut epicormic sprouts	Poor leaf surface, small dead wood, powerline through canopy, old pruning cuts with some callous and decay, most of canopy is epicormic sprouts, heading cuts	In good planter size, small amount of sidewalk cracking and uplifting, curb cracking	2 Poor	Pet_BIO	10/19/2021	10/19/2021	Camphor tree	Cinnamomum camphora	22	5.5
113	Point	0	22.5	26	16	Root collar good	Abnormal trunk shape, bulge at 3 feet, codominant leader at 7 feet, "u" shaped crotch, cut epicormic sprouts	Poor leaf surface, small dead wood, powerline through canopy, old pruning cuts with some callous and decay, most of canopy is epicormic sprouts, heading cuts	In good planter size, small amount of sidewalk cracking and uplifting, curb cracking	2 Poor	Pet_BIO	10/19/2021	10/19/2021	Camphor tree	Cinnamomum camphora	22	5.5
39	Point	0	23	31	22	Root collar okay, bulging up in planter space, many surface roots exposed with mechanical damage, uplifted 2 feet from curb	codominant stems at 7 feet into many, "u" shaped crotch and included bark	Fair leaf surface, epicormic sprouts, power lines through canopy, lion tailed, old pruning cuts with various callous stages	Good planter space, adjacent to power pole, cracked and uplifting gutter, cracked sidewalk	3 Moderate	Pet_BIO	10/27/2021	10/27/2021	Camphor tree	Cinnamomum camphora	23	5.8
9	Point	0	25	26	16	Root collar exposed, epicormic sprouts	Abnormal trunk shape, bulge at 3 feet, codominant leader at 5 feet, "u" shaped crotch, leader removed with severe decay pocket into trunk cut, some callous	Fair leaf surface, small dead wood, powerline through canopy, old pruning cuts with some callous and decay, heading cuts	In good planter size, large amount of sidewalk cracking and uplifting, curb cracking	2 Poor	Pet_BIO	10/19/2021	10/19/2021	Camphor tree	Cinnamomum camphora	25	6.3

114	Point	0	25	26	16	Root collar exposed, epicormic sprouts	Abnormal trunk shape, bulge at 3 feet, codominant leader at 5 feet, "u" shaped crotch, leader removed with severe decay pocket into trunk cut, some callous	Fair leaf surface, small dead wood, powerline through canopy, old pruning cuts with some callous and decay, heading cuts	In good planter size, large amount of sidewalk cracking and uplifting, curb cracking	2 Poor	Pet_BIO	10/19/2021	10/19/2021	Camphor tree	Cinnamomum camphora	25	6.3
0	Point	0	25.5	45	20	Root collar slightly buried	Seams and folds, okay, codominant leaders at 5 feet and 9 feet, "u" shaped crotch	Narrow angle attachments, good leaf surface, communication lines in canopy	Cracked curb, in good size planter	3 Moderate	Pet_BIO	10/18/2021	10/18/2021	Punk tree	Meialeuca quinquenervi a	26	6.5
105	Point	0	25.5	45	20	Root collar slightly buried	Seams and folds, okay, codominant leaders at 5 feet and 9 feet, "u" shaped crotch	Narrow angle attachments, good leaf surface, communication lines in canopy	Cracked curb, in good size planter	3 Moderate	Pet_BIO	10/18/2021	10/18/2021	Punk tree	Meialeuca quinquenervi a	26	6.5
1	Point	0	26	45	20	Root collar slightly buried	Seams and folds, okay, codominant leaders at 12 good leaf surface, communication lines in crotch	Narrow angle attachments, good leaf surface, communication lines in canopy	good size planter	3 Moderate	Pet_BIO	10/18/2021	10/18/2021	Punk tree	Meialeuca quinquenervi a	26	6.5
106	Point	0	26	45	20	Root collar slightly buried	Seams and folds, okay, codominant leaders at 12 good leaf surface, communication lines in crotch	Narrow angle attachments, good leaf surface, communication lines in canopy	good size planter	3 Moderate	Pet_BIO	10/18/2021	10/18/2021	Punk tree	Meialeuca quinquenervi a	26	6.5
3	Point	0	29	36	25	Root collar exposed	Good, codominant leader at 6 feet, included bark, large laterals removed with some callous and decay	Fair leaf surface, dead wood, powerline through canopy, old pruning cuts with some callous and decay	In good planter size	3 Moderate	Pet_BIO	10/18/2021	10/18/2021	Camphor tree	Cinnamomum camphora	29	7.3
108	Point	0	29	36	25	Root collar exposed	Good, codominant leader at 6 feet, included bark, large laterals removed with some callous and decay	Fair leaf surface, dead wood, powerline through canopy, old pruning cuts with some callous and decay	In good planter size	3 Moderate	Pet_BIO	10/18/2021	10/18/2021	Camphor tree	Cinnamomum camphora	29	7.3
34	Point	0	3	14	5	Root collar exposed, pavers adjacent to collar, irrigation within 6 inches	Epicormic sprouts, old pruning cuts with some callous, mechanical damage at 1 foot, codominant stems at 6 feet into 3, included bark	Under power lines, epicormic sprouts, good leaf surface, slight lean to north	Good size planter space, pavers adjacent to trunk, cracked curb	3 Moderate	Pet_BIO	10/27/2021	10/27/2021	Maidenhair tree	Ginkgo biloba	3	3
45	Point	0	3	10	5	Large planter space, root collar abnormal shape, likely due to landscaping damage, epicormic sprouts	Codominant stems at 6 feet, included bark, poor leaf surface, deciduous-epicormic sprouts	old pruning cuts with some callous, epicormic sprouts, poor leaf surface, deciduous-hard to tell canopy health	Good size planter space	2 Poor	Pet_BIO	10/27/2021	10/27/2021	Eastern redbud	Cercis canadensis	3	3
56	Point	0	3	7	3	Root collar slightly buried, okay	Good	Narrow angle attachments, good leaf surface	Good size planter space, cracked sidewalk	4 Good	Pet_BIO	10/27/2021	10/27/2021	Golden wattle	Acacia pycnantha	3	3

92	Point	0	3	11	6	Small planter space, root collar okay	Good, laterals with narrow angle attachments	old pruning cuts with some callous, poor leaf surface, deciduous- hard to tell canopy health, under communication line	Small size planter space	Pet_BIO	10/27/2021	10/27/2021	Eastern redbud	Cercis canadensis	3	3
99	Point	0	3	12	5	Small soils pile at base, root collar slightly buried, epicormic sprouts	Old small pruning cuts with complete callous, strange ties and guys	Good leaf surface	On going sidewalk replacement, drive way cracked	Pet_BIO	10/27/2021	10/27/2021	Maidenhair tree	Ginkgo biloba	3	3
42	Point	0	3,1,1	9	6	Small planter space, root collar buried, epicormic sprouts	Codominant stems at base, included bark, numerous old pruning cuts with no callous and decay, crossing main stems	poor old pruning cuts, epicormic sprouts, poor leaf surface, deciduous- hard to tell canopy health	Planter space completely paved over	Pet_BIO	10/27/2021	10/27/2021	Eastern redbud	Cercis canadensis	5	3
91	Point	0	3,3,1,1	7	3	Small planter space, root collar buried, main stem removed with decay	Stump sprout at base, poor structure, old pruning cuts with little callous	Very poor leaf surface, old pruning cuts with some callous and decay, poor structure	Small planter curb	Pet_BIO	10/27/2021	10/27/2021	Shrub - Hibiscus	Shrub - Hibiscus	8	0
4	Point	0	31	35	25	Root collar good	Good, codominant leader at 6 and 12.13 feet, included bark, large laterals removed with complete callous, epicormic sprouts	Fair leaf surface, dead wood, powerline though canopy, old pruning cuts with some callous and decay, numerous heading cuts	In good planter size, small amount of sidewalk	Pet_BIO	10/19/2021	10/19/2021	Camphor tree	Cinnamomum camphora	31	7.8
109	Point	0	31	35	25	Root collar good	Good, codominant leader at 6 and 12.13 feet, included bark, large laterals removed with complete callous, epicormic sprouts	Fair leaf surface, dead wood, powerline though canopy, old pruning cuts with some callous and decay, numerous heading cuts	In good planter size, small amount of sidewalk	Pet_BIO	10/19/2021	10/19/2021	Camphor tree	Cinnamomum camphora	31	7.8
5	Point	0	32.5	33	12	Root collar good	Good, codominant leader at 6 and 12 feet into 3, included bark, large laterals removed with some to complete callous, epicormic sprouts, trunk has abnormal shape	Very poor leaf surface, dead wood, powerline though canopy, old pruning cuts with some callous and decay, numerous heading cuts	In good planter size, small amount of sidewalk	Pet_BIO	10/19/2021	10/19/2021	Camphor tree	Cinnamomum camphora	32	8
110	Point	0	32.5	33	12	Root collar good	Good, codominant leader at 6 and 12 feet into 3, included bark, large laterals removed with some to complete callous, epicormic sprouts, trunk has abnormal shape	Very poor leaf surface, dead wood, powerline though canopy, old pruning cuts with some callous and decay, numerous heading cuts	In good planter size, small amount of sidewalk	Pet_BIO	10/19/2021	10/19/2021	Camphor tree	Cinnamomum camphora	32	8
65	Point	0	4	10	6	Large planter space, root collar okay, vegetation at base	Codominant stems at 6 feet, included bark, lateral removed with callous, trunk leans to north east	old pruning cuts with some callous, poor leaf surface, deciduous- hard to tell canopy health, under power lines	Good size planter space	Pet_BIO	10/27/2021	10/27/2021	Eastern redbud	Cercis canadensis	4	3

67 Point	0	4	10	5	Large planter space, root collar slightly exposed, vegetation at base	laterals with included bark, trunk slight leans to east	Small poor old pruning cuts with some callous, epicormic sprouts, fair leaf surface, under power lines	Good size planter space, cracked sidewalk	Pet_BIO	10/27/2021	10/27/2021	Maidenhair tree	Ginkgo biloba	4	3
82 Point	0	4.4, .3, 2.1	10	5	Route color not visible due to dense canopy	Numerous stems, most branches not visible due to density of canopy	Good leaf surface	Cracked curb, cracked sidewalk	Pet_BIO	10/27/2021	10/27/2021	Rubber plant	Ficus elastica	20	5
37 Point	0	4.5	15	10	Root collar exposed, large planter space, pipe access within 3 feet of base	Mechanical damage with mostly complete callous, poor structure, deciduous - and some heart rot, rip put with decay at 6 feet	Narrow angle attachments, poor structure, deciduous - can't tell canopy health	Good size planter space	Pet_BIO	10/27/2021	10/27/2021	Black locust	Robinia pseudoacacia	4	3
64 Point	0	4.5	12	8	Large planter space, root collar okay, vegetation at base	Codominant stems at 6 feet, included bark, lateral removed with callous, trunk leans to north east	old pruning cuts with some callous, poor leaf surface, deciduous- hard to tell canopy health, under power lines	Good size planter space	Pet_BIO	10/27/2021	10/27/2021	Eastern redbud	Cercis canadensis	4	3
66 Point	0	4.5	13	5	Large planter space, root collar slightly buried, vegetation at base	Codominant stems at 5 feet, included bark, laterals with included bark, trunk slight leans to north east	Small old pruning cuts with some callous, epicormic sprouts, good leaf surface, under power lines	Good size planter space, cracked curb	Pet_BIO	10/27/2021	10/27/2021	Maidenhair tree	Ginkgo biloba	4	3
90 Point	0	4.5	8	4	Root collar okay, good size planter space	Good, codominant leader at 5 feet into many, included bark	Small old pruning cuts with little callous, okay structure, good leaf surface, under power lines	Cracked curb	Pet_BIO	10/27/2021	10/27/2021	Bottlebrush	Callistemon sp	4	3
41 Point	0	4.5, 1.1	10	7	Small planter space, root collar buried, old stems removed at base with no callous	Codominant stems at base into 3, included bark, main trunk leans to east, mechanical damage with some callous	epicormic sprouts, poor leaf surface, deciduous- hard to tell canopy health	2 Poor	Pet_BIO	10/27/2021	10/27/2021	Eastern redbud	Cercis canadensis	6	3
11 Point	0	5	22	10	Root collar buried, major mechanical damage with some callous at base, heartrot	Old pruning cuts with complete callous to some callous, codominant leader at 5 feet, included bark	Narrow angle attachments, good leaf surface and good structure, under communication line	In median, good space	Pet_BIO	10/19/2021	10/19/2021	Red maple	Acer rubrum	5	3
54 Point	0	5	12	6	Large planter space, root collar okay, epicormic sprouts, gravel up to base	Mechanical damage with some callous and decay, Codominant stems at 6 feet, included bark	old pruning cuts with some callous, epicormic sprouts, poor leaf surface, deciduous- hard to tell canopy health	Good size planter space	Pet_BIO	10/27/2021	10/27/2021	Eastern redbud	Cercis canadensis	5	3
88 Point	0	5	9	5	Root collar okay, good size planter space	Good	Small old pruning cuts with little callous, okay structure, fair leaf surface, under power lines, small dead wood	Uplifting sidewalk	Pet_BIO	10/27/2021	10/27/2021	New Zealand Christmas tree	Metrosideros excelsa	5	3
89 Point	0	5	9	6	Root collar slightly buried, good size planter space	Closed seam, codominant leader at 4 feet, included bark	Small old pruning cuts with little callous, okay structure, fair leaf surface, under power lines. nest	Good size planter space	Pet_BIO	10/27/2021	10/27/2021	Broom teatree	Leptospermum scoparium	5	3

116 Point	0	5	22	10	Root collar buried, major mechanical damage with some callous at base, heartrot	Old pruning cuts with complete callous to some structure, under leader at 5 feet, included bark	Narrow angle attachments, good leaf surface and good communication line	In median, good space	3 Moderate	Pet_BIO	10/19/2021	10/19/2021	Red maple	Acer rubrum	5	3
55 Point	0	5.5	10	8	Large planter space, root collar okay, epicormic sprouts, gravel up to base	Mechanical damage with some callous and decay, Old pruning cuts with some callous, rip out with callous and decay, abnormal canopy lean	old pruning cuts with some callous, epicormic sprouts, poor leaf surface, deciduous-hard to tell canopy health, canopy leans to east	Good size planter space	2 Poor	Pet_BIO	10/27/2021	10/27/2021	Eastern redbud	Cercis canadensis	6	3
13 Point	0	6	20	8	Root collar buried, major mechanical damage with some callous at base, heartrot	Old pruning cuts with complete callous to some leader at 5 feet into many, included bark	Narrow angle attachments, good leaf surface and fair structure	In median, good space	3 Moderate	Pet_BIO	10/19/2021	10/19/2021	Red maple	Acer rubrum	6	3
15 Point	0	6	23	9	Numerous major mechanical damage wounds with some callous at base, heartrot	Mechanical damage scratches source unknown, Old pruning cuts with complete callous to some callous, codominant leader at 5 and 7 feet into many, included bark	Narrow angle attachments, good leaf surface and fair structure - deciduous	In median, good space	3 Moderate	Pet_BIO	10/19/2021	10/19/2021	Red maple	Acer rubrum	6	3
16 Point	0	6	19	7	Numerous major mechanical damage wounds with some callous at base, heartrot, epicormic sprouts	Old pruning cuts with complete callous to some callous, included bark	Narrow angle attachments, good leaf surface and fair structure - deciduous	In median, good space	3 Moderate	Pet_BIO	10/19/2021	10/19/2021	Red maple	Acer rubrum	6	3
17 Point	0	6	19	9	Numerous minor mechanical damage wounds with some callous at base, root collar exposed, roots exposed with mechanical damage from heartrot	Old pruning cuts with complete callous to some callous, included bark	Narrow angle attachments, good leaf surface and fair structure - deciduous	In median, good space	3 Moderate	Pet_BIO	10/19/2021	10/19/2021	Red maple	Acer rubrum	6	3
21 Point	0	6	23	7	root collar exposed, surface roots exposed with mechanical damage from landscaping	Numerous laterals with included bark, old pruning cuts with some to complete callous	Narrow angle attachments, good leaf surface and fair structure - deciduous, old pruning cuts with some callous and decay	In median, good space	3 Moderate	Pet_BIO	10/19/2021	10/19/2021	Red maple	Acer rubrum	6	3
100 Point	0	6	17	6	Epicormic sprouts, rocks piled up to base, vegetation planted, large planter space	Good, codominant stems at 6 feet, included bark	Good leaf surface, small dead wood, good structure, under power lines	Uplifting sidewalk, good planter space	3 Moderate	Pet_BIO	10/27/2021	10/27/2021	Crape myrtle	Lagerstroemia spp	6	3

118 Point	0	6	20	8	Root collar-buried, major mechanical damage with some callous at base, heartrot	Old pruning cuts with complete callous to some leader at 5 feet into many, included bark	Narrow angle attachments, good leaf surface and fair structure	In median, good space	3 Moderate	Pet_BIO	10/19/2021	10/19/2021	Red maple	Acer rubrum	6	3
120 Point	0	6	23	9	Numerous major mechanical damage wounds with some callous at base, heartrot	Mechanical damage scratches source unknown, Old pruning cuts with complete callous to some callous, codominant leader at 5 and 7 feet into many, included bark	Narrow angle attachments, good leaf surface and fair structure - deciduous	In median, good space	3 Moderate	Pet_BIO	10/19/2021	10/19/2021	Red maple	Acer rubrum	6	3
121 Point	0	6	19	7	Numerous major mechanical damage wounds with some callous at base, heartrot, epicormic sprouts	Old pruning cuts with complete callous to some callous, codominant leader at 5 feet into many, included bark	Narrow angle attachments, good leaf surface and fair structure - deciduous	In median, good space	3 Moderate	Pet_BIO	10/19/2021	10/19/2021	Red maple	Acer rubrum	6	3
122 Point	0	6	19	9	Numerous minor mechanical damage wounds with some callous at base, root collar exposed, roots exposed with mechanical damage from	Old pruning cuts with complete callous to some callous, included bark	Narrow angle attachments, good leaf surface and fair structure - deciduous	In median, good space	3 Moderate	Pet_BIO	10/19/2021	10/19/2021	Red maple	Acer rubrum	6	3
126 Point	0	6	23	7	Indeterminate root collar exposed, surface roots exposed with mechanical damage from landscaping	Numerous laterals with included bark, old pruning cuts with some to complete callous	Narrow angle attachments, good leaf surface and fair structure - deciduous, old pruning cuts with some callous and decay	In median, good space	3 Moderate	Pet_BIO	10/19/2021	10/19/2021	Red maple	Acer rubrum	6	3
52 Point	0	6,7	15	8	Bulge at base, plants at base, cut epicormic sprouts	codominant leader 1 foot, "u" shaped crotch, abnormal trunk shape, old pruning cuts with some callous and decay	Narrow angle attachments, good leaf surface, under power lines	In small planter, okay, cracked sidewalk, gutter and curb	3 Moderate	Pet_BIO	10/27/2021	10/27/2021	Olive tree	Olea europaea	13	3.3
18 Point	0	6.5	19	7	Numerous major mechanical damage wounds with some callous at base, heartrot	codominant leader at 5 feet into 3, included bark	Narrow angle attachments, good leaf surface and fair structure - deciduous, old pruning cuts with some callous and decay	In median, good space	3 Moderate	Pet_BIO	10/19/2021	10/19/2021	Red maple	Acer rubrum	6	3
19 Point	0	6.5	17	6	Numerous major mechanical damage wounds with some callous at base, heartrot	codominant leader at 4 and 6 feet, included bark, laterals below codominant leaders	Narrow angle attachments, good leaf surface and fair structure - deciduous, old pruning cuts with some callous and decay	In median, good space	3 Moderate	Pet_BIO	10/19/2021	10/19/2021	Red maple	Acer rubrum	6	3
30 Point	0	6.5	17	7	Root collar good, pull mulch off base of tree	Old pruning cuts with some callous and decay, epicormic sprouts	Powdery mildew, leaves browning, fair leaf surface, epicormic sprouts, under power lines	Large planter space, good	2 Poor	Pet_BIO	10/19/2021	10/19/2021	Oregon white oak	Quercus garryana	6	3

123 Point	0	6.5	19	7	Numerous major mechanical damage wounds with some callous at base, heartrot	codominant leader at 5 feet into 3, included bark	Narrow angle attachments, good leaf surface and fair structure - deciduous, old pruning cuts with some callous and decay	In median, good space	3 Moderate	Pet_BIO	10/19/2021	10/19/2021	Red maple	Acer rubrum	6	3
124 Point	0	6.5	17	6	Numerous major mechanical damage wounds with some callous at base, heartrot	codominant leader at 4 and 5 feet, included bark, laterals below codominant leaders	Narrow angle attachments, good leaf surface and fair structure - deciduous, old pruning cuts with some callous and decay	In median, good space	3 Moderate	Pet_BIO	10/19/2021	10/19/2021	Red maple	Acer rubrum	6	3
135 Point	0	6.5	17	7	Root collar good, pull mulch off base of tree	Old pruning cuts with some callous and decay, epicormic sprouts	Powdery mildew, leaves browning, fair leaf surface, epicormic sprouts, under power lines	Large planter space, good	2 Poor	Pet_BIO	10/19/2021	10/19/2021	Oregon white oak	Quercus garryana	6	3
51 Point	0	6.5, 6.5	18	8	Bulge at base, plants at base, decay pockets	codominant leader 1 feet, with included bark, natural graft at 2 feet, abnormal trunk shape, old pruning cuts with some callous and decay	Narrow angle attachments, old pruning cuts with some callous, epicormic sprouts, majority of canopy, heading cuts, good leaf surface, under power lines	In small planter, okay, cracked and uplifting sidewalk, cracked gutter and curb	3 Moderate	Pet_BIO	10/27/2021	10/27/2021	Olive tree	Olea europaea	13	3.3
14 Point	0	7	23	10	Numerous major mechanical damage wounds with some callous at base, heartrot	Old pruning cuts with complete callous to some leader at 6 feet into many, included bark	Narrow angle attachments, good leaf surface and fair structure	In median, good space	3 Moderate	Pet_BIO	10/19/2021	10/19/2021	Red maple	Acer rubrum	7	3
87 Point	0	7	13	5	Root collar okay, good size planter space	Good, codominant leader at 3 feet, included bark	Small old pruning cuts with little callous, okay structure, fair leaf surface, under power lines	Cracked sidewalk	3 Moderate	Pet_BIO	10/27/2021	10/27/2021	Bottlebrush	Callistemon sp	7	3
119 Point	0	7	23	10	Numerous major mechanical damage wounds with some callous at base, heartrot	Old pruning cuts with complete callous to some leader at 6 feet into many, included bark	Narrow angle attachments, good leaf surface and fair structure	In median, good space	3 Moderate	Pet_BIO	10/19/2021	10/19/2021	Red maple	Acer rubrum	7	3
29 Point	0	7 at 2 feet	15	6	Root collar slightly buried, epicormic sprouts, small planter space cut out	Codominant leader at 2 feet into 4, included bark, old pruning cuts with come to complete callous, new mechanical	Old pruning cuts with some complete callous, narrow angle attachments, epicormic sprouts dead, good leaf surface, under power lines	Small planter space cut out	3 Moderate	Pet_BIO	10/19/2021	10/19/2021	Loquat	Eriobotrya japonica	7	3
81 Point	0	7 at 2 feet	10	6	Root collar slightly buried, good size planter	Leans to north, codominant leader at 3 feet, included bark, old pruning cuts with callous surface and decay	Old pruning cuts with some callous and decay, narrow angle attachments, good leaf surface	Cracked sidewalk	3 Moderate	Pet_BIO	10/27/2021	10/27/2021	Interior live oak	Quercus wislizeni	7	3
134 Point	0	7 at 2 feet	15	6	Root collar slightly buried, epicormic sprouts, small planter space cut out	Codominant leader at 2 feet into 4, included bark, old pruning cuts with come to complete callous, new mechanical	Old pruning cuts with some complete callous, narrow angle attachments, epicormic sprouts dead, good leaf surface, under power lines	Small planter space cut out	3 Moderate	Pet_BIO	10/19/2021	10/19/2021	Loquat	Eriobotrya japonica	7	3

28 Point	0 7 at base	11	3	Root collar buried, small planter space	Numerous trunks at base, epicormic sprouts, small dead wood, pruned as shrub	Epicormic sprouts, pruned as shrub, good leaf surface, topped?, under power lines	Cracked curb, small planter cut out	3 Moderate	Pet_BIO	10/19/2021	Bottlebrush	Callistemon sp	7	3
133 Point	0 7 at base	11	3	Root collar buried, small planter space	Numerous trunks at base, epicormic sprouts, small dead wood, pruned as shrub	Epicormic sprouts, pruned as shrub, good leaf surface, topped?, under power lines	Cracked curb, small planter cut out	3 Moderate	Pet_BIO	10/19/2021	Bottlebrush	Callistemon sp	7	3
48 Point	0 7, 6, 7, 5, 2	7	3	Gravel to to base, good planter size	Codominant leaders at base into many	Good leaf surface	Cracked curb and gutter, cracked sidewalk, good planter space	4 Good	Pet_BIO	10/27/2021	Yucca sp	Yucca sp	30	7.5
50 Point	0 7, 6, 5	20	10	Bulge at base, epicormic sprouts trimmed, plants at base, decay pockets	codominant leader 1.5 feet, with included bark, abnormal trunk shape, central stem damage from 2 feet to 6 feet, mostly dead with callous	Large laterals, "u" shaped crotch, old pruning cuts with some callous, epicormic sprouts, majority of canopy, heading cuts, good leaf surface, under power lines	In small planter, okay, cracked sidewalk	3 Moderate	Pet_BIO	10/27/2021	Olive tree	Olea europaea	18	4.5
20 Point	0 7.5	24	10	Numerous major mechanical damage wounds with some callous at base, heart rot, root collar exposed, surface roots exposed with mechanical damage from landscaping	Numerous laterals with included bark, old pruning cuts with some to complete callous	Narrow angle attachments, good leaf surface and fair structure - deciduous, old pruning cuts with some callous and decay	In median, good space	3 Moderate	Pet_BIO	10/19/2021	Red maple	Acer rubrum	8	3
125 Point	0 7.5	24	10	Numerous major mechanical damage wounds with some callous at base, heart rot, root collar exposed, surface roots exposed with mechanical damage from landscaping	Numerous laterals with included bark, old pruning cuts with some to complete callous	Narrow angle attachments, good leaf surface and fair structure - deciduous, old pruning cuts with some callous and decay	In median, good space	3 Moderate	Pet_BIO	10/19/2021	Red maple	Acer rubrum	8	3
78 Point	0 8	36	6	Root collar exposed, slight abnormal shape, good size planter space	Old pruning cuts with some callous and decay, suppressed, inside tree	Poor leaf surface, old pruning cuts with some callous and decay, epicormic sprouts, small dead wood- deciduous	Good size planter space, uplifting sidewalk, cracked curb	2 Poor	Pet_BIO	10/27/2021	American Sweetgum	Liquidambar styraciflua	8	3
94 Point	0 8, 8.1 1	22	12	Bulge at base, epicormic sprouts, filled planted space growing over hard scape, decay cavity	codominant leader 2 feet into 3, included bark, abnormal trunk shape	old pruning cuts with some callous and decay, epicormic sprouts, narrow angle attachments, small and large dead wood, fair leaf surface	In small planter, filled space, uplifting sidewalk	2 Poor	Pet_BIO	10/27/2021	Olive tree	Olea europaea	27	6.8

Exhibit B

96 Point	0	9	11	3	Vegetation at base, root collar okay	Mechanical damage to trunk, large stem rip out with frayed edges and decay	Fair leaf surface, codominant stems at 6 feet	Good size planter space	2	Poor	Pet_BIO	10/27/2021	10/27/2021	Yucca sp	Yucca sp	9	3
85 Point	0	9 at 1	11	6	Root collar slightly exposed, surface roots present, some mechanical damage with Callous and decay	codominant leader at 2 feet into three, included bark Poor old pruning cut, topped with frayed edges, epicormic sprouts, Poor leaf surface, under power lines, narrow angle attachments	cracked curb, good size planter space	2	Poor	Pet_BIO	10/27/2021	10/27/2021	American Sweetgum	Liquidambar styraciflua	9	3	
27 Point	0	9 at base	11	3	Root collar buried, small planter space	Numerous trunks at base, epicormic sprouts, small dead wood, pruned as shrub	Epicormic sprouts, pruned as shrub, good leaf surface, topped?, under power lines	Cracked curb, small planter cut out	3	Moderate	Pet_BIO	10/19/2021	10/19/2021	Bottlebrush	Callistemon sp	9	3
132 Point	0	9 at base	11	3	Root collar buried, small planter space	Numerous trunks at base, epicormic sprouts, small dead wood, pruned as shrub	Epicormic sprouts, pruned as shrub, good leaf surface, topped?, under power lines	Cracked curb, small planter cut out	3	Moderate	Pet_BIO	10/19/2021	10/19/2021	Bottlebrush	Callistemon sp	9	3



February 28, 2022

Ms. Meryka Dirks
Environmental Science Associates
787 The Alameda, Suite 250
San Jose, CA 95126

Addendum to the Wildcat Pipeline (El Cerrito) Section of the West of Hills Northern Pipelines Environmental Impact Report

Dear Ms. Dirks;

W-Trans has completed a review of the potential traffic impacts that would be associated with the proposed new alignment for the Wildcat Pipeline (El Cerrito) Project (Project) in the City of El Cerrito. As now proposed, the section of the alignment previously planned to be on Norvell Street, Fairmount Avenue, Behrens Street and C Street would now be along Lincoln Avenue, Clayton Avenue, Central Avenue and Ashbury Drive (revised Project). The potential traffic impacts associated with the revised Project were evaluated within the context of both the alignment itself and the proposed detour route.

The impacts as identified in the *West of Hills Northern Pipeline Project Environmental Impact Report* (EIR), May 2013, were reviewed and evaluated for application to the alignment as proposed within the context of the transportation-related items from the California Environmental Quality Act (CEQA) in effect when the EIR was prepared. Figure 10 of the EIR, which showed the alignment as originally proposed, has been modified to indicate the proposed new alignment between the intersection of Lincoln Avenue/Norvell Street and Ashbury Avenue/C Street, and is enclosed for reference. Except for the section indicated in a red dashed line the alignment remains the same.

Traffic Operation

The revised Project would affect four roadway segments that would not otherwise have been affected by the approved Project. These four segments are all two-lane roadways that generally serve local traffic rather than regional volumes, have low volumes, and are served by a grid network that provides multiple alternative routes when each of the affected segments is under construction. Further, the change in the alignment would result in less traffic needing to be detoured compared to the approved Project because Fairmount Avenue, which carries in excess of 8,000 vehicles per day, would no longer be affected and would continue to carry east-west traffic. Though only two lanes, Ashbury Avenue south of Fairmount Avenue is sufficient wide to allow partial closure, which is less impactful than a full closure. The operational characteristics of the roadways added as the revised Project are detailed in Table 1.

Table 1 – Characteristics of Roads on Proposed New Route

Roadway (Segment)	No. of Lanes (Width)	Traffic Volumes	Bike Lanes	Sidewalk	On-Street Parking	Public Transit
Lincoln Ave (Norvell-Clayton)	Two (30 feet)	1,000 vpd*	No	Both sides	Both Sides	No
Clayton Ave (Lincoln-Central)	Two (30 feet)	1,000 vpd*	No	Both sides	Both Sides	No
Central Ave (Clayton-Ashbury)	Two (30 feet)	2,000 vpd*	No	Both sides	North Side	No
Ashbury Ave (Central-C)	Two (78 feet)	4,070 vpd	No	Both sides	Both Sides	No

* Volumes estimated based on roadway character and connectivity

The EIR identified significant and unavoidable impacts on intersection operations associated with road closures and detours for the pipeline installation under the approved Project, as described in Impact 3.13-1. Based on the characteristics of the roadways added to the revised Project, the operational analysis provided in the EIR under

Impact 3.13-1 remains valid and adequately accounts for diversions associated with the alignment as now proposed. Due to the lower volume of traffic detoured through the segments in the proposed Project, the overall impacts of the revised Project will be less than the approved Project but will remain significant and unavoidable.

Mitigation Measure TRA-1b, which calls for deployment of flaggers at Richmond Street/Central Avenue and Richmond Street/Fairmount Avenue during peak periods would continue to be needed to accommodate detoured traffic during construction on Ashbury Avenue. While this would reduce the impact at this location to less-than-significant, the impact on other intersections along the alignment of diverting traffic would remain *significant and unavoidable*.

Emergency Access

The EIR identified less-than-significant impacts associated with emergency vehicle access during pipeline construction under the approved Project, as described in Impact 3.13-2. The new road segments that would be affected by the revised Project would be closed and have traffic detoured during construction hours. Local residents would be permitted access to their residences. The barricades that would be used for road closures could easily be removed to allow emergency vehicle access. The impact on emergency vehicle access would therefore be less than significant, the same as identified in the EIR.

Potential Hazards

The potential for the approved Project to introduce any hazards was evaluated in the EIR under Impact 3.13-3. The EIR indicated that the road closures would not result in any hazardous conditions for traffic and the impact would be less than significant. A portion of the revised Project would pass directly adjacent to Harding Elementary School and the El Cerrito High School football field, resulting in potential hazards due to conflicts with school-related traffic. Mitigation Measure TRA-2a addresses this as it requires that business owners (which would logically include officials at schools) located within 300 feet of project construction be notified in advance of activities requiring road closures about the estimated schedule and duration of activity. It is further noted that per this Mitigation Measure EBMUD will send emails to individuals on the Project's mailing list to update them prior to road closures. Interpreted to include school officials as business owners, the impact relative to potential hazards would remain less than significant as mitigated. No new or more significant impacts would occur compared to those identified for the approved Project in the EIR.

Local Access

Impact 3.13-4 of the EIR addressed access to local residences, finding that because the roadways would be closed on a block-by-block basis under the approved Project, and therefore for a limited time, the potential impacts could be addressed through Mitigation Measures TRA-2a, 2b and 2c which require advance notification to residents and business owners along the alignment, re-opening all roads at the end of the day for through traffic (though parking zones could remain blocked) and maintaining a sidewalk on one side of the street should be enforced with the new alignment. It is understood that work adjacent to the Harding Elementary School would be performed while school is not in session, thereby avoiding the potential for affecting access to the school. Mitigation Measures TRA-2a, 2b and 2c would address any other potential impacts associated with local access under the revised Project. With implementation of the mitigation measures the revised Project would be expected to have a less-than-significant impact on local access, the same as identified in the EIR.

Alternative Mode Access

The approved Project's potential impact on access for alternative modes of transportation, including pedestrians, bicyclists, and transit riders was addressed through Impact 3.13-5 in the EIR, which indicated that potential impacts could be addressed through implementation of Mitigation Measure TRA-3b, which requires coordination with AC Transit to relocate bus stops and/or reroute affected transit services via parallel streets during construction. As


indicated in Table 1, all four affected streets have sidewalk on both sides, none have bike lanes, and there are no transit routes along any of these roadways. Mitigation Measure TRA-2c requires maintaining a sidewalk on one side of the street to ensure a less-than-significant impact on pedestrian travel, including to Harding Elementary School and El Cerrito High School and as expanded would limit the potential for conflict with pedestrian travel to and from these schools. Bicyclists could also use the open sidewalk or adjacent streets for travel, ensuring adequate access. As there are no transit routes running along any of the four affected streets, there would be no impacts to transit and the impact addressed by Mitigation Measure TRA-3b regarding Fairmount Avenue would be avoided, thereby reducing the scope of this mitigation measure. With implementation of the mitigation measures, the revised Project would have a less-than-significant impact on alternative mode access, the same as identified in the EIR.

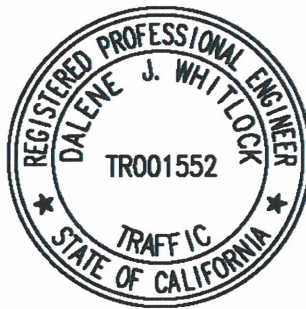
Conclusions

Based on the review performed the revised Project would be expected to have the same or less impact on traffic and transportation as was identified for the approved Project. Implementation of the mitigation measures as set forth in the EIR is adequate to reduce all impacts to a less-than-significant level and no new or more significant impacts associated with the revised Project were identified.

Thank you for giving us the opportunity to provide these services. Please contact me if you have questions about this information.

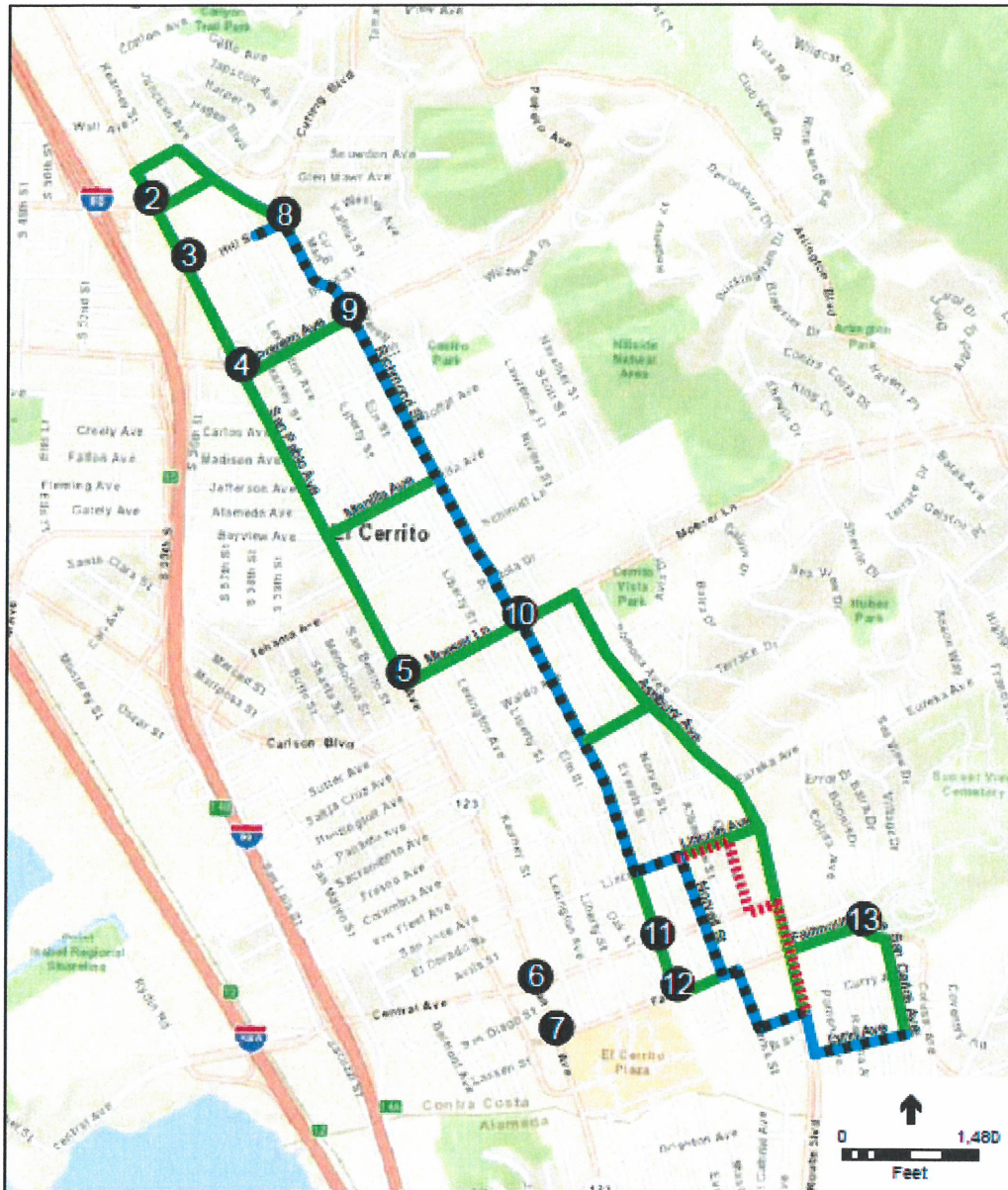
Sincerely,


Dalene J. Whitlock, PE, PTOE
Senior Principal



DJW/djw/EMB001-1.L1

Enclosure: EIR Figure 10, Revised



- Proposed Road Closures
- Wildcat Pipeline (El Cerrito)
- Detour Routes
- ② Study Intersections

----- Proposed alignment

EBMUD West of Hills Northern Pipelines . 211488

Figure 10
Proposed Detour Routes