

# \*ENVIRONMENTAL DECLARATION

(CALIFORNIA FISH AND GAME CODE SECTION 711.4)

## LEAD AGENCY NAME AND ADDRESS

**EAST BAY MUNICIPAL UTILITY DISTRICT**  
Office of the Secretary  
375 Eleventh Street, MS 806  
Oakland, CA 94607-4240  
(510) 287-0404 - [SecOffice@ebmud.com](mailto:SecOffice@ebmud.com)

*Project: Adoption of Revisions to Water and Wastewater Schedules of Rates and Charges, Capacity Charges, and Other Fees Not Subject to Proposition 218 for Fiscal Year (FY) 2027*

## FOR COUNTY CLERK USE ONLY

**ENDORSED  
FILED  
ALAMEDA COUNTY**

**JUN 11 2026**

**MELISSA WILK, County Clerk**  
By     *al*     Deputy

FILE NO:     20-182    

## CLASSIFICATION OF ENVIRONMENTAL DOCUMENT: (PLEASE MARK ONLY ONE CLASSIFICATION)

### 1. NOTICE OF EXEMPTION / STATEMENT OF EXEMPTION

- A - STATUTORILY OR CATEGORICALLY EXEMPT  
\$ 50.00 - COUNTY CLERK HANDLING FEE

### 2. NOTICE OF DETERMINATION (NOD)

- A - NEGATIVE DECLARATION (OR MITIGATED NEG. DEC.)  
\$ 3,043.75 - STATE FILING FEE  
\$ 50.00 - COUNTY CLERK HANDLING FEE

- B - ENVIRONMENTAL IMPACT REPORT (EIR)  
\$ 4,227.50 - STATE FILING FEE  
\$ 50.00 - COUNTY CLERK HANDLING FEE

### 3. OTHER: \_\_\_\_\_

**RECEIVED**  
**JUN 11 2026**  
Office of the Secretary

**\*\*\*A COPY OF THIS FORM MUST BE COMPLETED AND SUBMITTED WITH EACH COPY OF AN ENVIRONMENTAL DECLARATION BEING FILED WITH THE ALAMEDA COUNTY CLERK.\*\*\***

#### **BY MAIL FILINGS:**

PLEASE INCLUDE FIVE (5) COPIES OF ALL NECESSARY DOCUMENTS AND TWO (2) SELF-ADDRESSED ENVELOPES.

#### **IN PERSON FILINGS:**

PLEASE INCLUDE FIVE (5) COPIES OF ALL NECESSARY DOCUMENTS AND ONE (1) SELF-ADDRESSED ENVELOPES.

**ALL APPLICABLE FEES MUST BE PAID AT THE TIME OF FILING.**

FEES ARE EFFECTIVE JANUARY 1, 2026

MAKE CHECKS PAYABLE TO: ALAMEDA COUNTY CLERK



# NOTICE OF EXEMPTION

<b>TO:</b> Alameda County Clerk/Recorder 1106 Madison St. Oakland, CA 94607	<b>RECEIVED</b>  <b>JUN 11 2026</b>  Office of the Secretary	<b>FROM: (LEAD AGENCY)</b> EAST BAY MUNICIPAL UTILITY DISTRICT Office of the Secretary - (510) 287-0404 - <a href="mailto:SecOffice@ebmud.com">SecOffice@ebmud.com</a> 375 Eleventh Street, MS 806 Oakland, CA 94607-4240 <input checked="" type="checkbox"/> Lead Agency is the Project Applicant <input checked="" type="checkbox"/> Lead Agency is Public Agency Approving Project <input checked="" type="checkbox"/> Lead Agency is Carrying Out Project
--	--	--

**PROJECT INFORMATION**

**1. TITLE:** Adoption of Revisions to Water and Wastewater Schedules of Rates and Charges, Capacity Charges, and Other Fees Not Subject to Proposition 218 for Fiscal Year (FY) 2027

**2. LOCATION:** EBMUD Service Area, Alameda and Contra Costa Counties, and Amador, Calaveras, and San Joaquin Counties. See Exhibits 1, 2 and 3.

**3. DESCRIPTION:** On June 9, 2026, the Board of Directors of East Bay Municipal Utility District (Board) adopted revisions to water and wastewater rates and charges, capacity charges, and other fees for FY 2027. The various rates, charges, and fees approved by the Board included FY 2027 water system capacity charges, wastewater capacity charges, recreation use fees, real property use application fees, and Public Records Act fees. Water and wastewater rates, charges, and fees are applicable to the EBMUD service area as shown in Exhibit 1. Real property use application fees are applicable to requests for use of EBMUD properties located in the EBMUD service area (shown in Exhibit 1) and in EBMUD watershed areas in Amador, Calaveras, and San Joaquin Counties (shown in Exhibits 2 and 3). The changes to the recreation use fees apply to EBMUD recreation facilities in the EBMUD service area (shown in Exhibit 1) and in Amador, Calaveras, and San Joaquin Counties (shown in Exhibits 2 and 3). Further information about these rates, charges, and fees is available at <http://www.ebmud.com/rates>.

**ENDORSED  
FILED  
ALAMEDA COUNTY**

**EXEMPTION FINDING (Check one)**

This project is exempt from CEQA because:

1. <input type="checkbox"/> Activity is not a project	
2. <input type="checkbox"/> Activity is Ministerial (Sec.21080(b)(1); Guideline 15268)	
3. <input type="checkbox"/> Activity is a Declared Emergency (Sec.21080(b)(3); Guideline 15269(a))	
4. <input type="checkbox"/> Activity is an Emergency Project (Sec.21080(b)(4); Guideline 15269(b)(c))	
5. <input checked="" type="checkbox"/> Activity is Categorically Exempt Under Guideline	CEQA Guidelines Section 15061(b)(3)
6. <input checked="" type="checkbox"/> Activity is Statutorily Exempt Under Guideline	CEQA Guidelines Section 15273, Public Resources Code Section 21080(b)(8)

7.  **Reasons why project is exempt:** The Board's adoption of water and wastewater rates and charges, and various fees for FY 2027 is exempt from the requirements of CEQA because it consists entirely of the establishment, modification, structuring, restructuring, or approval of rates, tolls, fares, or other charges necessary to (1) meet District operation expenses, including employee wage rates and fringe benefits, (2) purchase or lease supplies, equipment or materials, (3) meet financial reserve needs and requirements, and (4) obtain funds for capital projects necessary to maintain service within the District's existing service area. The Board's adoption of these rates, charges, and various fees, is also exempt from the requirements of CEQA because there is no possibility that their adoption will have a significant effect on the environment. All of the rates, charges, and fees adopted by the Board were designed to support the District's operating and capital expenses.

JUN 11 2026

MELISSA WILK, County Clerk  
By                      Deputy

**APPROVAL BY INITIATING UNIT: Finance 218**

June 10, 2026	Phoebe A. Grow	<u>                    </u>	Robert L. Hannay	<u>                    </u>
1. DATE PREPARED	2. PREPARED BY (initial)		3. REVIEWED BY (Unit Supv. initial)	
	Robert L. Hannay			
4. RECOMMENDED BY (Division/Section Manager)				
Phoebe A. Grow	809	Principal Management Analyst	510-287-0205	
5. CONTACT PERSON	MAIL SLOT #	TITLE	PHONE	

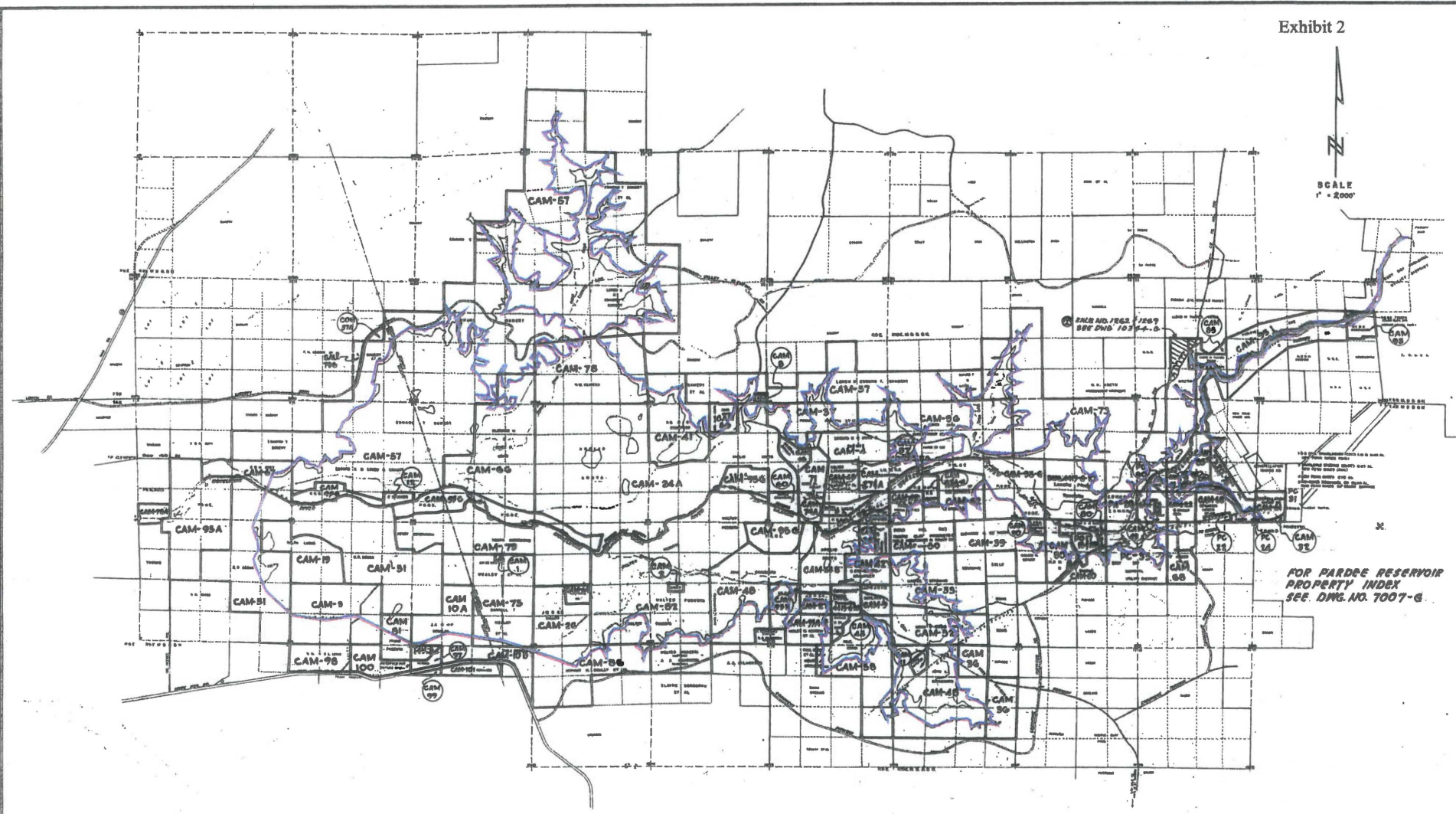
**NOTICE OF EXEMPTION APPROVED FOR FILING WITH THE COUNTY CLERK**

June 10, 2026	Sophia D. Skoda	<u>                    </u>
DATE	DEPARTMENT DIRECTOR	
June 10, 2026	Rischa S. Cole	<u>                    </u>
DATE FORWARDED TO COUNTY CLERK	SECRETARY OF THE DISTRICT	

# EBMUD SERVICE AREA



Exhibit 2

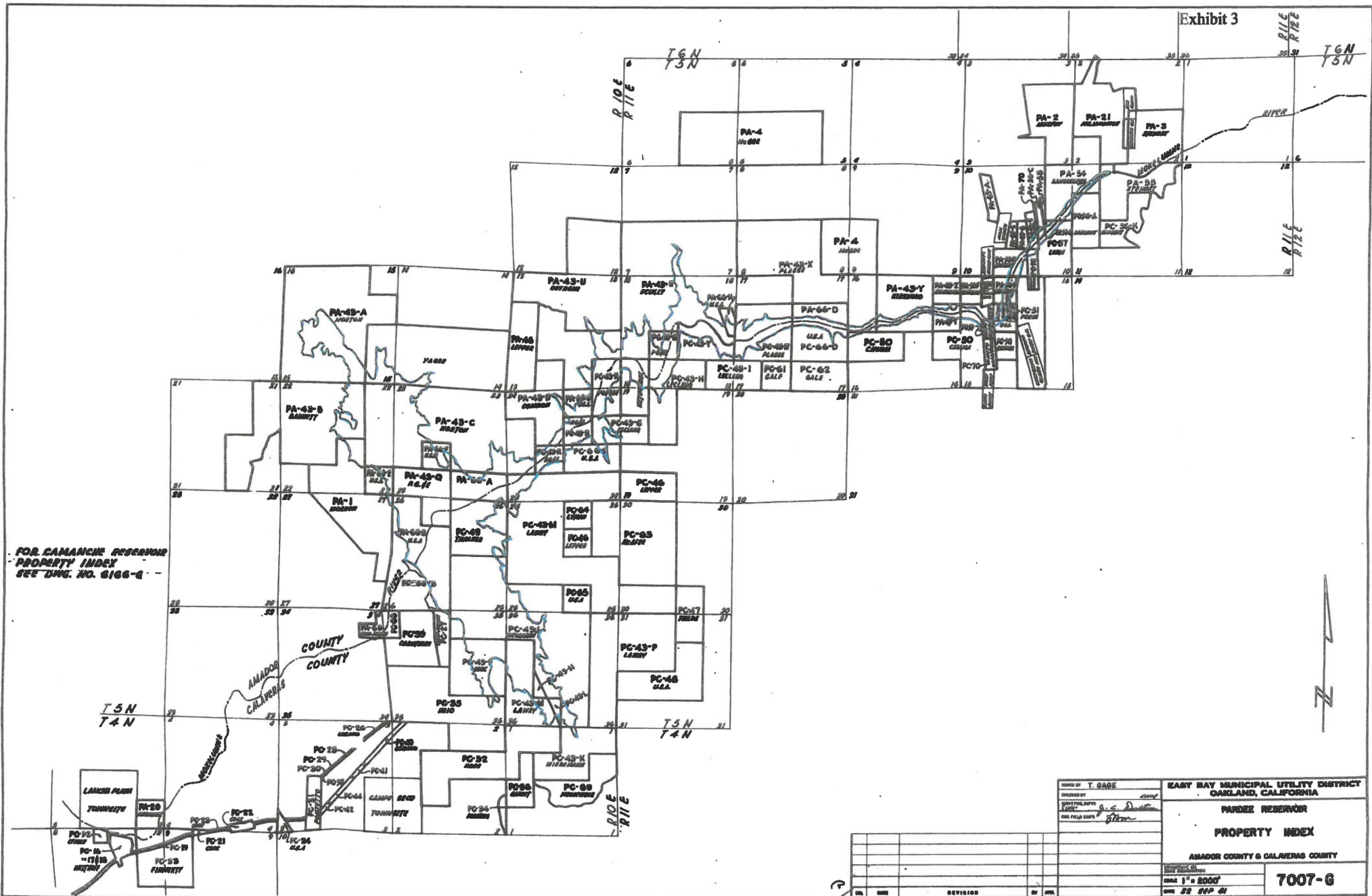


FOR PARDEE RESERVOIR  
PROPERTY INDEX  
SEE DWG. NO. 7007-G

DESIGNED BY DRAWN BY CHECKED BY APPROVED BY		EAST BAY MUNICIPAL UTILITY DISTRICT OAKLAND, CALIFORNIA
OTHERS 0 0		CAMANCHE RESERVOIR PROJECT PROPERTY INDEX PRIOR OWNERSHIP INDEX
AMADOR, CALAVERAS & SAN JOAQUIN COUNTY		6166-G
DATE MAR. 29, 1971		SCALE 1" = 2000'

11 1/2" x 14" ARCADE SALE NO. 7 DWG. NO.	11 1/2" x 14"
12 1/2" x 17" ARCADE SALE NO. 7 DWG. NO.	12 1/2" x 17"
14 1/2" x 21" ARCADE SALE NO. 7 DWG. NO.	14 1/2" x 21"
17 1/2" x 25" ARCADE SALE NO. 7 DWG. NO.	17 1/2" x 25"
21 1/2" x 30" ARCADE SALE NO. 7 DWG. NO.	21 1/2" x 30"
25 1/2" x 35" ARCADE SALE NO. 7 DWG. NO.	25 1/2" x 35"
30 1/2" x 42" ARCADE SALE NO. 7 DWG. NO.	30 1/2" x 42"
35 1/2" x 48" ARCADE SALE NO. 7 DWG. NO.	35 1/2" x 48"
42 1/2" x 58" ARCADE SALE NO. 7 DWG. NO.	42 1/2" x 58"
48 1/2" x 68" ARCADE SALE NO. 7 DWG. NO.	48 1/2" x 68"
58 1/2" x 84" ARCADE SALE NO. 7 DWG. NO.	58 1/2" x 84"
68 1/2" x 100" ARCADE SALE NO. 7 DWG. NO.	68 1/2" x 100"
84 1/2" x 120" ARCADE SALE NO. 7 DWG. NO.	84 1/2" x 120"
100 1/2" x 140" ARCADE SALE NO. 7 DWG. NO.	100 1/2" x 140"
120 1/2" x 168" ARCADE SALE NO. 7 DWG. NO.	120 1/2" x 168"
140 1/2" x 196" ARCADE SALE NO. 7 DWG. NO.	140 1/2" x 196"
168 1/2" x 236" ARCADE SALE NO. 7 DWG. NO.	168 1/2" x 236"
196 1/2" x 280" ARCADE SALE NO. 7 DWG. NO.	196 1/2" x 280"
236 1/2" x 336" ARCADE SALE NO. 7 DWG. NO.	236 1/2" x 336"
280 1/2" x 400" ARCADE SALE NO. 7 DWG. NO.	280 1/2" x 400"
336 1/2" x 476" ARCADE SALE NO. 7 DWG. NO.	336 1/2" x 476"
400 1/2" x 560" ARCADE SALE NO. 7 DWG. NO.	400 1/2" x 560"
476 1/2" x 656" ARCADE SALE NO. 7 DWG. NO.	476 1/2" x 656"
560 1/2" x 760" ARCADE SALE NO. 7 DWG. NO.	560 1/2" x 760"
656 1/2" x 880" ARCADE SALE NO. 7 DWG. NO.	656 1/2" x 880"
760 1/2" x 1008" ARCADE SALE NO. 7 DWG. NO.	760 1/2" x 1008"
880 1/2" x 1152" ARCADE SALE NO. 7 DWG. NO.	880 1/2" x 1152"
1008 1/2" x 1312" ARCADE SALE NO. 7 DWG. NO.	1008 1/2" x 1312"
1152 1/2" x 1488" ARCADE SALE NO. 7 DWG. NO.	1152 1/2" x 1488"
1312 1/2" x 1680" ARCADE SALE NO. 7 DWG. NO.	1312 1/2" x 1680"
1488 1/2" x 1888" ARCADE SALE NO. 7 DWG. NO.	1488 1/2" x 1888"
1680 1/2" x 2112" ARCADE SALE NO. 7 DWG. NO.	1680 1/2" x 2112"
1888 1/2" x 2360" ARCADE SALE NO. 7 DWG. NO.	1888 1/2" x 2360"
2112 1/2" x 2624" ARCADE SALE NO. 7 DWG. NO.	2112 1/2" x 2624"
2360 1/2" x 2904" ARCADE SALE NO. 7 DWG. NO.	2360 1/2" x 2904"
2624 1/2" x 3200" ARCADE SALE NO. 7 DWG. NO.	2624 1/2" x 3200"
2904 1/2" x 3512" ARCADE SALE NO. 7 DWG. NO.	2904 1/2" x 3512"
3200 1/2" x 3840" ARCADE SALE NO. 7 DWG. NO.	3200 1/2" x 3840"
3512 1/2" x 4184" ARCADE SALE NO. 7 DWG. NO.	3512 1/2" x 4184"
3840 1/2" x 4544" ARCADE SALE NO. 7 DWG. NO.	3840 1/2" x 4544"
4184 1/2" x 4920" ARCADE SALE NO. 7 DWG. NO.	4184 1/2" x 4920"
4544 1/2" x 5312" ARCADE SALE NO. 7 DWG. NO.	4544 1/2" x 5312"
4920 1/2" x 5720" ARCADE SALE NO. 7 DWG. NO.	4920 1/2" x 5720"
5312 1/2" x 6144" ARCADE SALE NO. 7 DWG. NO.	5312 1/2" x 6144"
5720 1/2" x 6584" ARCADE SALE NO. 7 DWG. NO.	5720 1/2" x 6584"
6144 1/2" x 7040" ARCADE SALE NO. 7 DWG. NO.	6144 1/2" x 7040"
6584 1/2" x 7512" ARCADE SALE NO. 7 DWG. NO.	6584 1/2" x 7512"
7040 1/2" x 8000" ARCADE SALE NO. 7 DWG. NO.	7040 1/2" x 8000"
7512 1/2" x 8504" ARCADE SALE NO. 7 DWG. NO.	7512 1/2" x 8504"
8000 1/2" x 9024" ARCADE SALE NO. 7 DWG. NO.	8000 1/2" x 9024"
8504 1/2" x 9568" ARCADE SALE NO. 7 DWG. NO.	8504 1/2" x 9568"
9024 1/2" x 10136" ARCADE SALE NO. 7 DWG. NO.	9024 1/2" x 10136"
9568 1/2" x 10728" ARCADE SALE NO. 7 DWG. NO.	9568 1/2" x 10728"
10136 1/2" x 11344" ARCADE SALE NO. 7 DWG. NO.	10136 1/2" x 11344"
10728 1/2" x 11984" ARCADE SALE NO. 7 DWG. NO.	10728 1/2" x 11984"
11344 1/2" x 12648" ARCADE SALE NO. 7 DWG. NO.	11344 1/2" x 12648"
11984 1/2" x 13336" ARCADE SALE NO. 7 DWG. NO.	11984 1/2" x 13336"
12648 1/2" x 14048" ARCADE SALE NO. 7 DWG. NO.	12648 1/2" x 14048"
13336 1/2" x 14784" ARCADE SALE NO. 7 DWG. NO.	13336 1/2" x 14784"
14048 1/2" x 15544" ARCADE SALE NO. 7 DWG. NO.	14048 1/2" x 15544"
14784 1/2" x 16328" ARCADE SALE NO. 7 DWG. NO.	14784 1/2" x 16328"
15544 1/2" x 17136" ARCADE SALE NO. 7 DWG. NO.	15544 1/2" x 17136"
16328 1/2" x 17968" ARCADE SALE NO. 7 DWG. NO.	16328 1/2" x 17968"
17136 1/2" x 18824" ARCADE SALE NO. 7 DWG. NO.	17136 1/2" x 18824"
17968 1/2" x 19704" ARCADE SALE NO. 7 DWG. NO.	17968 1/2" x 19704"
18824 1/2" x 20608" ARCADE SALE NO. 7 DWG. NO.	18824 1/2" x 20608"
19704 1/2" x 21536" ARCADE SALE NO. 7 DWG. NO.	19704 1/2" x 21536"
20608 1/2" x 22488" ARCADE SALE NO. 7 DWG. NO.	20608 1/2" x 22488"
21536 1/2" x 23464" ARCADE SALE NO. 7 DWG. NO.	21536 1/2" x 23464"
22488 1/2" x 24464" ARCADE SALE NO. 7 DWG. NO.	22488 1/2" x 24464"
23464 1/2" x 25488" ARCADE SALE NO. 7 DWG. NO.	23464 1/2" x 25488"
24464 1/2" x 26536" ARCADE SALE NO. 7 DWG. NO.	24464 1/2" x 26536"
25488 1/2" x 27608" ARCADE SALE NO. 7 DWG. NO.	25488 1/2" x 27608"
26536 1/2" x 28704" ARCADE SALE NO. 7 DWG. NO.	26536 1/2" x 28704"
27608 1/2" x 29824" ARCADE SALE NO. 7 DWG. NO.	27608 1/2" x 29824"
28704 1/2" x 30968" ARCADE SALE NO. 7 DWG. NO.	28704 1/2" x 30968"
29824 1/2" x 32136" ARCADE SALE NO. 7 DWG. NO.	29824 1/2" x 32136"
30968 1/2" x 33328" ARCADE SALE NO. 7 DWG. NO.	30968 1/2" x 33328"
32136 1/2" x 34544" ARCADE SALE NO. 7 DWG. NO.	32136 1/2" x 34544"
33328 1/2" x 35784" ARCADE SALE NO. 7 DWG. NO.	33328 1/2" x 35784"
34544 1/2" x 37048" ARCADE SALE NO. 7 DWG. NO.	34544 1/2" x 37048"
35784 1/2" x 38336" ARCADE SALE NO. 7 DWG. NO.	35784 1/2" x 38336"
37048 1/2" x 39648" ARCADE SALE NO. 7 DWG. NO.	37048 1/2" x 39648"
38336 1/2" x 40984" ARCADE SALE NO. 7 DWG. NO.	38336 1/2" x 40984"
39648 1/2" x 42344" ARCADE SALE NO. 7 DWG. NO.	39648 1/2" x 42344"
40984 1/2" x 43728" ARCADE SALE NO. 7 DWG. NO.	40984 1/2" x 43728"
42344 1/2" x 45136" ARCADE SALE NO. 7 DWG. NO.	42344 1/2" x 45136"
43728 1/2" x 46568" ARCADE SALE NO. 7 DWG. NO.	43728 1/2" x 46568"
45136 1/2" x 48024" ARCADE SALE NO. 7 DWG. NO.	45136 1/2" x 48024"
46568 1/2" x 49504" ARCADE SALE NO. 7 DWG. NO.	46568 1/2" x 49504"
48024 1/2" x 51008" ARCADE SALE NO. 7 DWG. NO.	48024 1/2" x 51008"
49504 1/2" x 52536" ARCADE SALE NO. 7 DWG. NO.	49504 1/2" x 52536"
51008 1/2" x 54088" ARCADE SALE NO. 7 DWG. NO.	51008 1/2" x 54088"
52536 1/2" x 55664" ARCADE SALE NO. 7 DWG. NO.	52536 1/2" x 55664"
54088 1/2" x 57264" ARCADE SALE NO. 7 DWG. NO.	54088 1/2" x 57264"
55664 1/2" x 58888" ARCADE SALE NO. 7 DWG. NO.	55664 1/2" x 58888"
57264 1/2" x 60536" ARCADE SALE NO. 7 DWG. NO.	57264 1/2" x 60536"
58888 1/2" x 62208" ARCADE SALE NO. 7 DWG. NO.	58888 1/2" x 62208"
60536 1/2" x 63904" ARCADE SALE NO. 7 DWG. NO.	60536 1/2" x 63904"
62208 1/2" x 65624" ARCADE SALE NO. 7 DWG. NO.	62208 1/2" x 65624"
63904 1/2" x 67368" ARCADE SALE NO. 7 DWG. NO.	63904 1/2" x 67368"
65624 1/2" x 69136" ARCADE SALE NO. 7 DWG. NO.	65624 1/2" x 69136"
67368 1/2" x 70928" ARCADE SALE NO. 7 DWG. NO.	67368 1/2" x 70928"
69136 1/2" x 72744" ARCADE SALE NO. 7 DWG. NO.	69136 1/2" x 72744"
70928 1/2" x 74584" ARCADE SALE NO. 7 DWG. NO.	70928 1/2" x 74584"
72744 1/2" x 76448" ARCADE SALE NO. 7 DWG. NO.	72744 1/2" x 76448"
74584 1/2" x 78336" ARCADE SALE NO. 7 DWG. NO.	74584 1/2" x 78336"
76448 1/2" x 80248" ARCADE SALE NO. 7 DWG. NO.	76448 1/2" x 80248"
78336 1/2" x 82184" ARCADE SALE NO. 7 DWG. NO.	78336 1/2" x 82184"
80248 1/2" x 84144" ARCADE SALE NO. 7 DWG. NO.	80248 1/2" x 84144"
82184 1/2" x 86128" ARCADE SALE NO. 7 DWG. NO.	82184 1/2" x 86128"
84144 1/2" x 88136" ARCADE SALE NO. 7 DWG. NO.	84144 1/2" x 88136"
86128 1/2" x 90168" ARCADE SALE NO. 7 DWG. NO.	86128 1/2" x 90168"
88136 1/2" x 92224" ARCADE SALE NO. 7 DWG. NO.	88136 1/2" x 92224"
90168 1/2" x 94304" ARCADE SALE NO. 7 DWG. NO.	90168 1/2" x 94304"
92224 1/2" x 96408" ARCADE SALE NO. 7 DWG. NO.	92224 1/2" x 96408"
94304 1/2" x 98536" ARCADE SALE NO. 7 DWG. NO.	94304 1/2" x 98536"
96408 1/2" x 100688" ARCADE SALE NO. 7 DWG. NO.	96408 1/2" x 100688"
98536 1/2" x 102864" ARCADE SALE NO. 7 DWG. NO.	98536 1/2" x 102864"
100688 1/2" x 105064" ARCADE SALE NO. 7 DWG. NO.	100688 1/2" x 105064"
102864 1/2" x 107288" ARCADE SALE NO. 7 DWG. NO.	102864 1/2" x 107288"
105064 1/2" x 109528" ARCADE SALE NO. 7 DWG. NO.	105064 1/2" x 109528"
107288 1/2" x 111792" ARCADE SALE NO. 7 DWG. NO.	107288 1/2" x 111792"
109528 1/2" x 114072" ARCADE SALE NO. 7 DWG. NO.	109528 1/2" x 114072"
111792 1/2" x 116368" ARCADE SALE NO. 7 DWG. NO.	111792 1/2" x 116368"
114072 1/2" x 118680" ARCADE SALE NO. 7 DWG. NO.	114072 1/2" x 118680"
116368 1/2" x 121008" ARCADE SALE NO. 7 DWG. NO.	116368 1/2" x 121008"
118680 1/2" x 123352" ARCADE SALE NO. 7 DWG. NO.	118680 1/2" x 123352"
121008 1/2" x 125712" ARCADE SALE NO. 7 DWG. NO.	121008 1/2" x 125712"
123352 1/2" x 128088" ARCADE SALE NO. 7 DWG. NO.	123352 1/2" x 128088"
125712 1/2" x 130480" ARCADE SALE NO. 7 DWG. NO.	125712 1/2" x 130480"
128088 1/2" x 132888" ARCADE SALE NO. 7 DWG. NO.	128088 1/2" x 132888"
130480 1/2" x 135312" ARCADE SALE NO. 7 DWG. NO.	130480 1/2" x 135312"
132888 1/2" x 137752" ARCADE SALE NO. 7 DWG. NO.	132888 1/2" x 137752"
135312 1/2" x 140208" ARCADE SALE NO. 7 DWG. NO.	135312 1/2" x 140208"
137752 1/2" x 142680" ARCADE SALE NO. 7 DWG. NO.	137752 1/2" x 142680"
140208 1/2" x 145168" ARCADE SALE NO. 7 DWG. NO.	140208 1/2" x 145168"
142680 1/2" x 147672" ARCADE SALE NO. 7 DWG. NO.	142680 1/2" x 147672"
145168 1/2" x 150192" ARCADE SALE NO. 7 DWG. NO.	145168 1/2" x 150192"
147672 1/2" x 152728" ARCADE SALE NO. 7 DWG. NO.	147672 1/2" x 152728"
150192 1/2" x 155280" ARCADE SALE NO. 7 DWG. NO.	150192 1/2" x 155280"
152728 1/2" x 157848" ARCADE SALE NO. 7 DWG. NO.	152728 1/2" x 157848"
155280 1/2" x 160432" ARCADE SALE NO. 7 DWG. NO.	155280 1/2" x 160432"
157848 1/2" x 163032" ARCADE SALE NO. 7 DWG. NO.	157848 1/2" x 163032"
160432 1/2" x 165648" ARCADE SALE NO. 7 DWG. NO.	160432 1/2" x 165648"
163032 1/2" x 168280" ARCADE SALE NO. 7 DWG. NO.	163032 1/2" x 168280"
165648 1/2" x 170928" ARCADE SALE NO. 7 DWG. NO.	165648 1/2" x 170928"
168280 1/2" x 173592" ARCADE SALE NO. 7 DWG. NO.	168280 1/2" x 173592"
170928 1/2" x 176272" ARCADE SALE NO. 7 DWG. NO.	170928 1/2" x 176272"
173592 1/2" x 178968" ARCADE SALE NO. 7 DWG. NO.	173592 1/2" x 178968"
176272 1/2" x 181680" ARCADE SALE NO. 7 DWG. NO.	



FOR CAMANCHE RESERVOIR  
PROPERTY INDEX  
SEE DWG. NO. 6166-4

DRAWN BY T. GAGE CHECKED BY DATE FILE NO.	<b>EAST BAY MUNICIPAL UTILITY DISTRICT</b> OAKLAND, CALIFORNIA  <b>PARDEE RESERVOIR</b>  <b>PROPERTY INDEX</b>  AMADOR COUNTY & CALAVERAS COUNTY
SCALE 1" = 2000' SHEET 22 OF 21	<b>7007-G</b>



State of California - Department of Fish and Wildlife  
**2026 ENVIRONMENTAL DOCUMENT FILING FEE CASH RECEIPT**  
 DFW 753.5a (REV. 01/01/26) Previously DFG 753.5a

**Print**    **Start Over**    **Save**

AC RECEIPT #: 3996431

RECEIPT NUMBER:  
 01 — 06/11/2026 — 182  
 STATE CLEARINGHOUSE NUMBER (If applicable)  
 --

SEE INSTRUCTIONS ON REVERSE. TYPE OR PRINT CLEARLY.

LEAD AGENCY <b>EAST BAY MUNICIPAL UTILITY DISTRICT</b>	LEAD AGENCY EMAIL	DATE <b>06/11/2026</b>
COUNTY/STATE AGENCY OF FILING <b>ALAMEDA</b>	DOCUMENT NUMBER <b>26 - 182</b>	

PROJECT TITLE  
**ADOPTION OF REVISIONS TO WATER AND WASTEWATER SCHEDULES OF RATES AND CHARGES, CAPACITY CHARGES, AND OTHER FEES NOT SUBJECT TO PROPOSITION 218...**

PROJECT APPLICANT NAME <b>PHOEBE A. GROW</b>	PROJECT APPLICANT EMAIL	PHONE NUMBER <b>(510) 287-0205</b>
PROJECT APPLICANT ADDRESS <b>375 ELEVENTH STREET, MS 806</b>	CITY <b>OAKLAND</b>	STATE <b>CA</b>
		ZIP CODE <b>94607-4240</b>

PROJECT-APPLICANT (Check appropriate box)

Local Public Agency   
  School District   
  Other Special District   
  State Agency   
  Private Entity

CHECK APPLICABLE FEES:


- Environmental Impact Report (EIR) \$4,227.50 \$ \_\_\_\_\_ 0.00
- Mitigated/Negative Declaration (MND)(ND) \$3,043.75 \$ \_\_\_\_\_ 0.00
- Certified Regulatory Program (CRP) document - payment due directly to CDFW \$1,437.25 \$ \_\_\_\_\_ 0.00
- Exempt from fee
  - Notice of Exemption (attach)
  - CDFW No Effect Determination (attach)
- Fee previously paid (attach previously issued cash receipt copy)
- Water Right Application or Petition Fee (State Water Resources Control Board only) \$850.00 \$ \_\_\_\_\_ 0.00
- County documentary handling fee \$ \_\_\_\_\_ 50.00
- Other \$ \_\_\_\_\_

**RECEIVED**  
**JUN 11 2026**  
 Office of the Secretary

PAYMENT METHOD:

Cash   
  Credit   
  Check   
  Other

TOTAL RECEIVED \$ \_\_\_\_\_ 50.00

SIGNATURE 	AGENCY OF FILING PRINTED NAME AND TITLE <b>A. CAMACHO, DEPUTY CLERK</b>
--	--

ALAMEDA COUNTY CLERK-RECORDER  
1106 MADISON STREET  
OAKLAND, CA 94607  
(510)272-6362

-----  
ISSUED TO:  
EAST BAY MUNICIPAL UTILITY DISTRICT  
-----

RECEIPT # 3996431  
DATE 06/11/2026 01:18:45 PM  
-----

SERVICE	PGS	QTY	FEE
CASHIERING			
HANDLING FEE	1	1	50.00
			=====
Total Amount Due			\$50.00

CHECK 200094836			50.00
			=====
Total Amount Paid			\$50.00

MELISSA WILK  
County Clerk-Recorder  
Deputy: Alyssa C