



East Bay Stewardship Network Collaboration

Planning Committee

June 9, 2026

Michelle Workman, Manager of Natural Resources

Agenda

- About the East Bay Stewardship Network
- Core Members and Focus Areas
- Collaborative Projects
- The East Bay Stewardship Network Charter
- Next Steps

About the East Bay Stewardship Network

- A coalition of agencies and organizations caring for over 250,000 acres of interconnected land in the East Bay area.
- Approaching environmental stewardship at a landscape scale across multiple partners, jurisdictions, and ecologies.

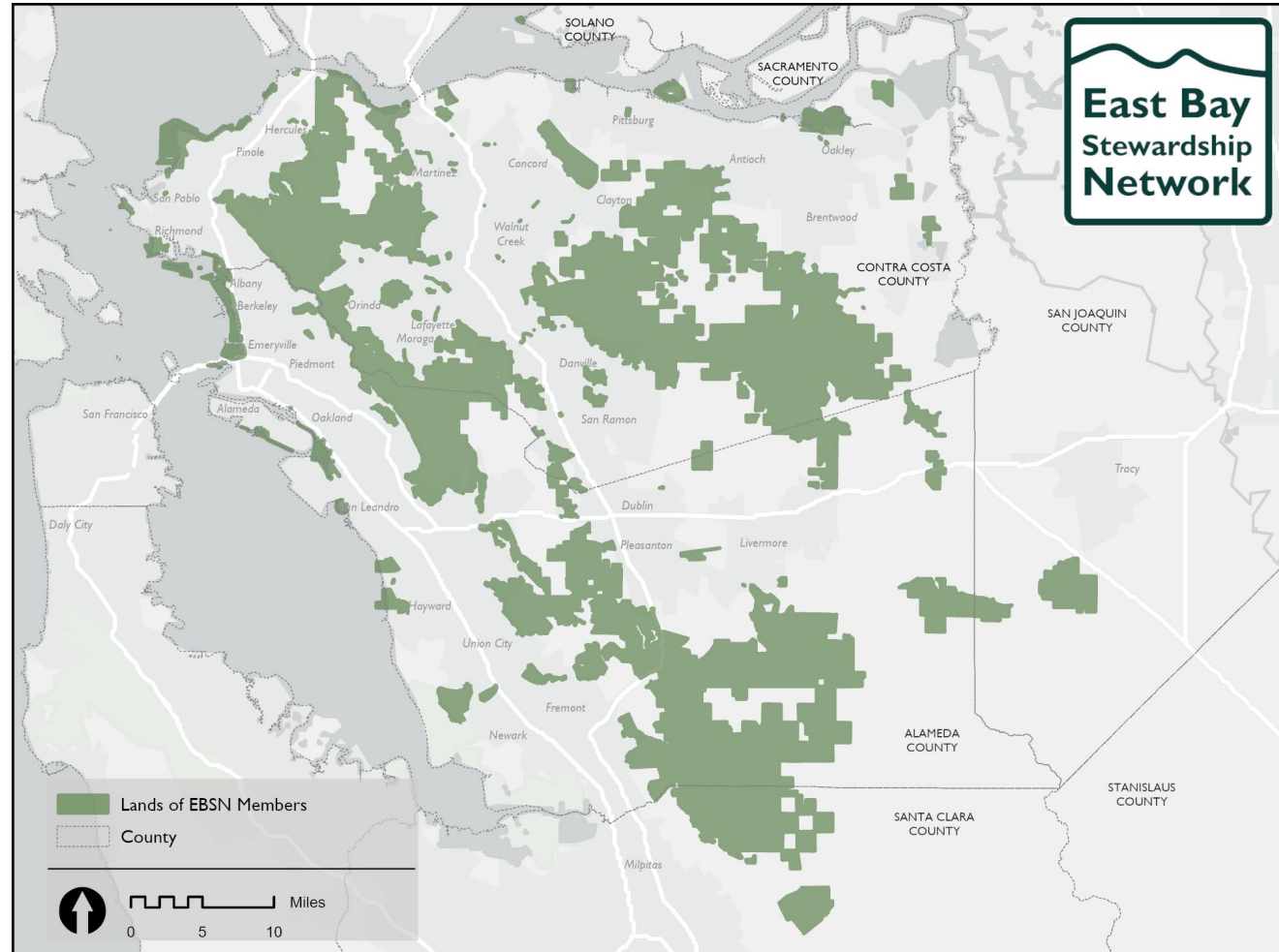


Image: eastbaystewardship.org

Core Members and Focus Areas

12 Core Members



Image: eastbaystewardship.org

Focus Areas

- Research and monitoring
- Knowledge sharing
- Planning and management best practices
- Regulatory permitting and compliance
- Education and communications
- Tribal engagement and co-stewardship

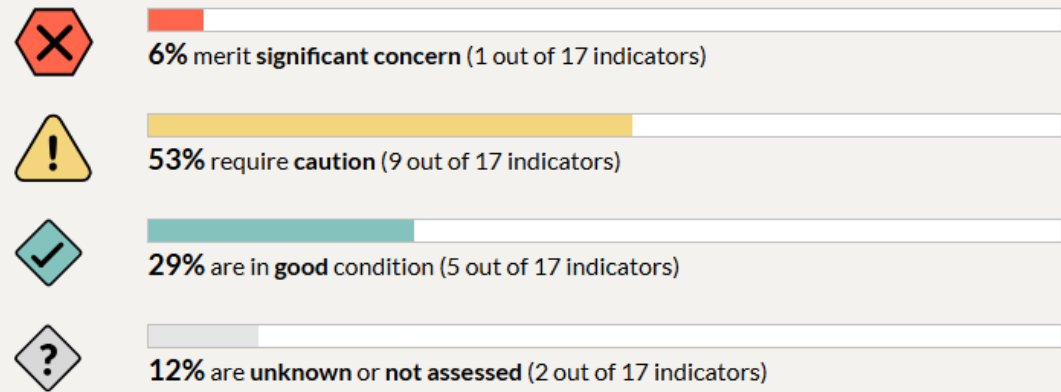
Collaborative Projects

- Nature Check
 - 225,000 acres
 - >200 protected species and 24 plant communities
 - 17 indicators
 - 5 Partner Agencies
 - EBMUD was key in developing the fish indicators



Indicator Health Conditions

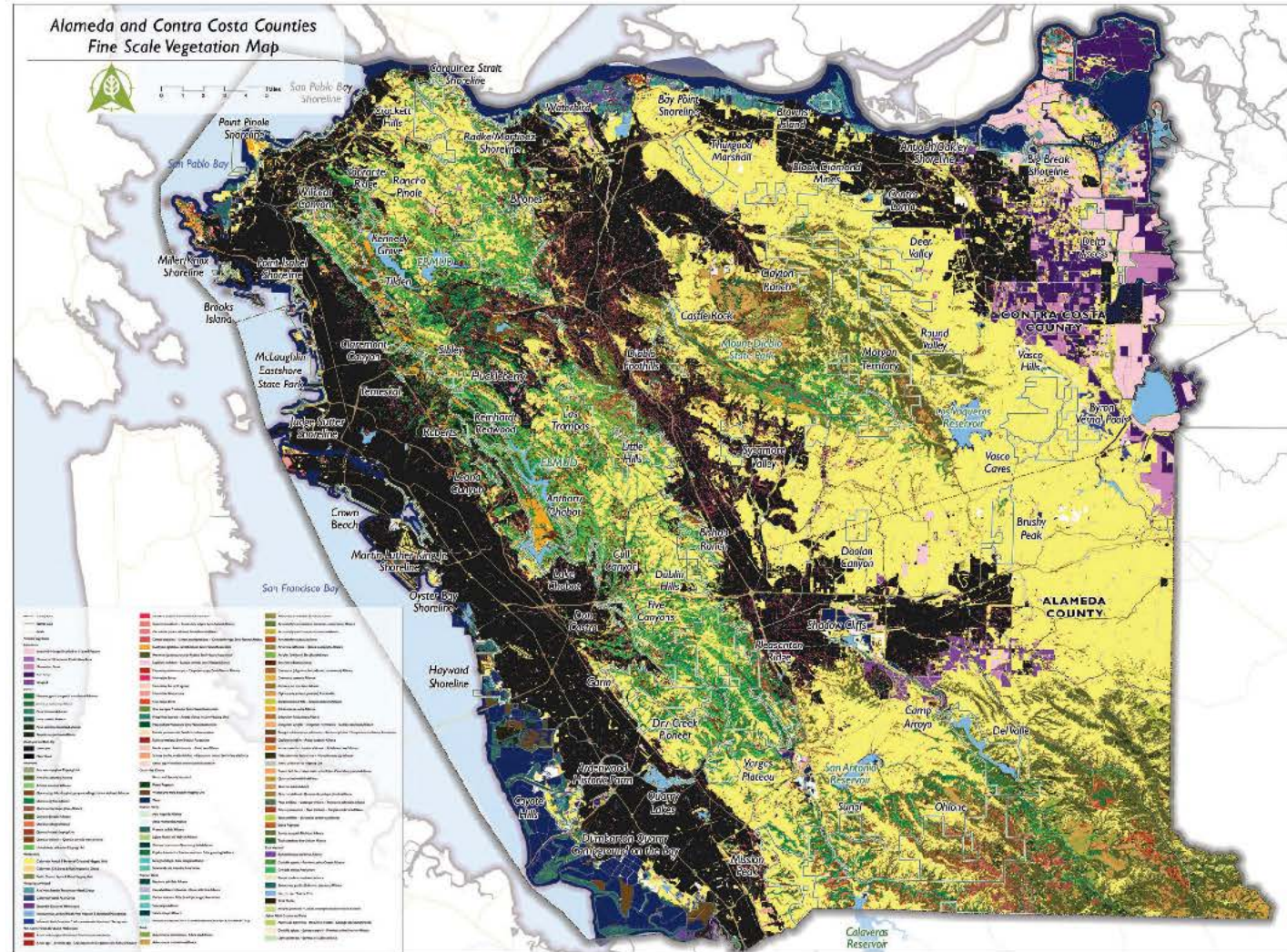
Click on the bars or numbers below, or select a condition from the dropdown to see related indicators and their health.



Images: eastbaystewardship.org

Collaborative Projects

- Fine Scale Vegetation Mapping
 - Fill data gaps
 - Inform management of invasive species
 - Inform management of wildfire fuels and vulnerabilities



Collaborative Projects

- Wild Pig Management

Integrated Wild Pig Management Plan

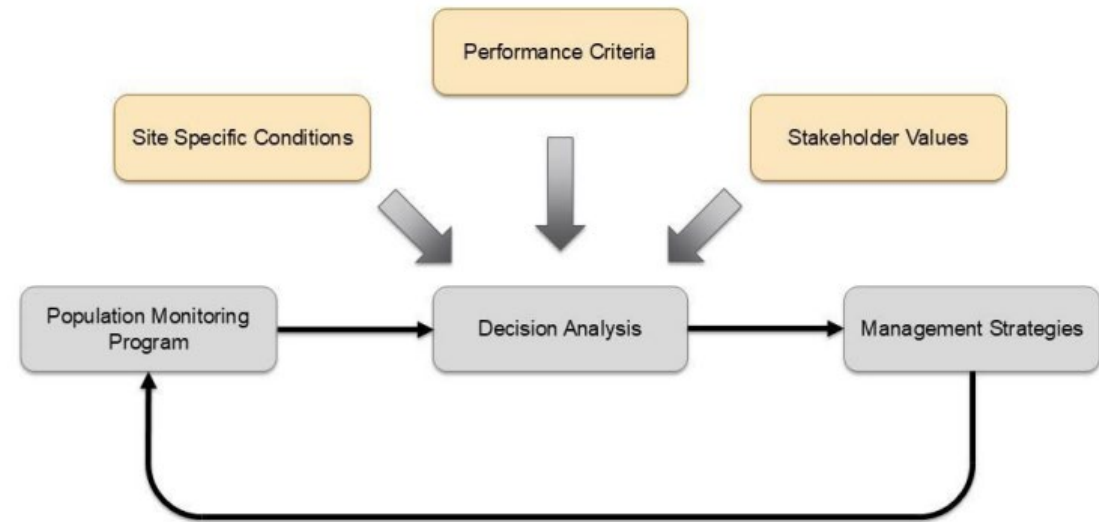
EBSN partners are developing a coordinated wild pig management plan to protect watershed, vegetation, and wildlife health.

[Learn more about the Wild Pig Management Plan](#)

Keywords: Best Practices, Invasive Species Management, Recommendations



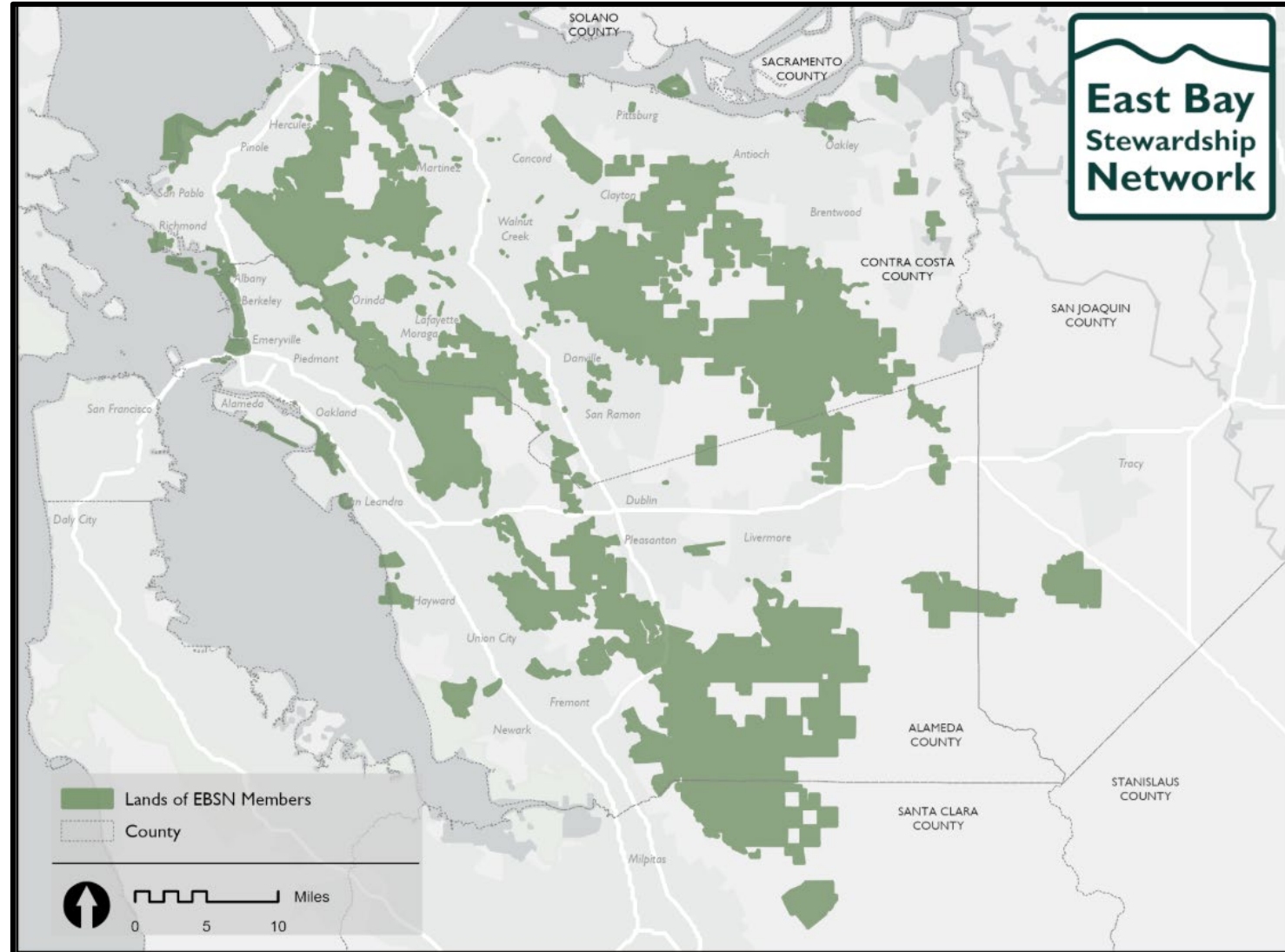
Continuous Adaptive Management Loop



Images: eastbaystewardship.org

The East Bay Stewardship Network Charter

- Membership
- Governance
- Decision making
- Legal/policy considerations
- Funding/resource sharing



Next Steps

- Seek feedback from the Planning Committee on the charter and financial contribution of \$25,000
- Continue to collaborate on regional projects that benefit EBMUD watershed biodiversity, water quality and wildfire resilience



Questions?

