



2026 Water Supply Availability & Deficiency Report

Board of Directors
April 28, 2026

Brad Ledesma, Manager of Water Resources

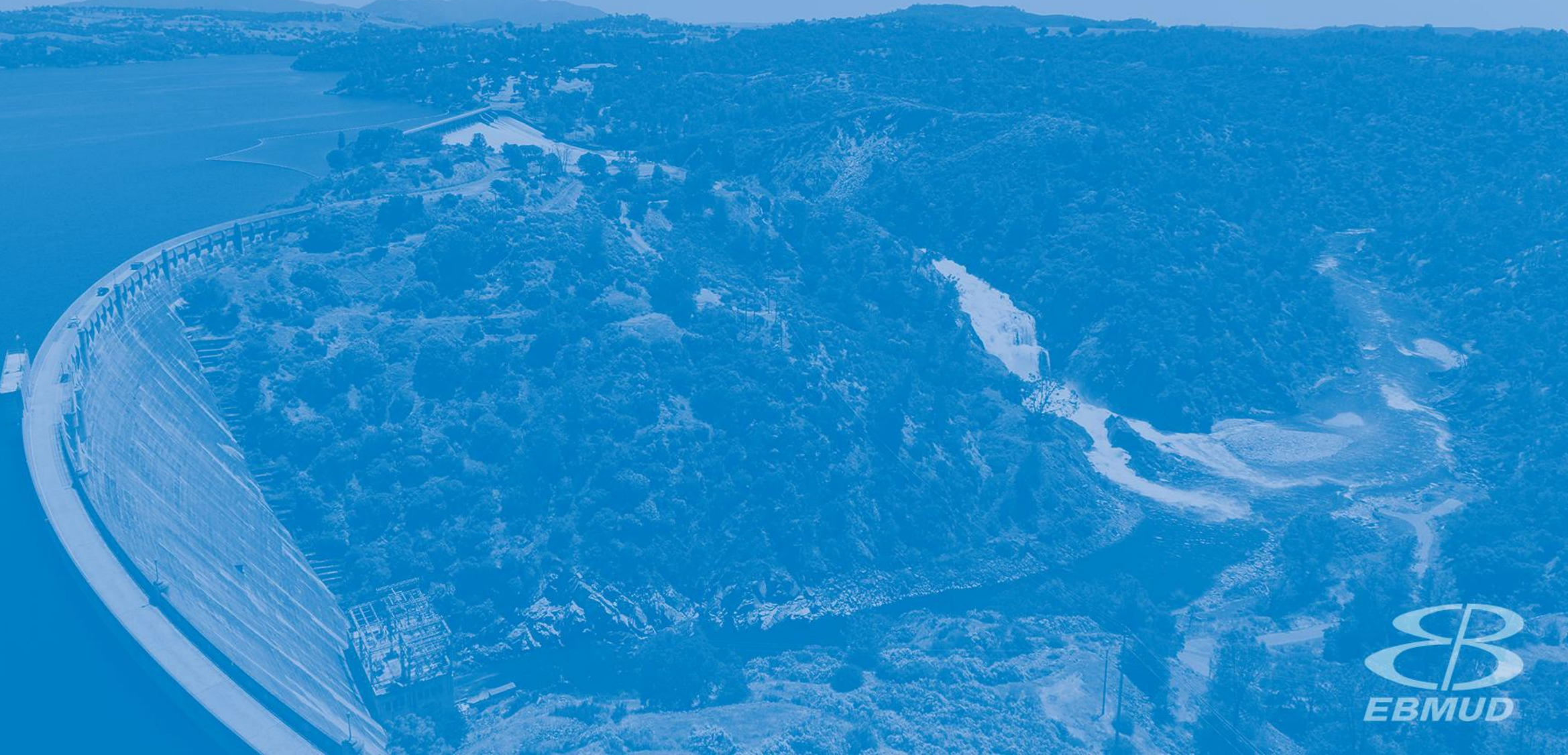
2026 Water Supply Availability and Deficiency Report

- Status of District Water Demands
- Status of Current Water Supplies
- Anticipated Water Flow Obligations
- Recommended Actions

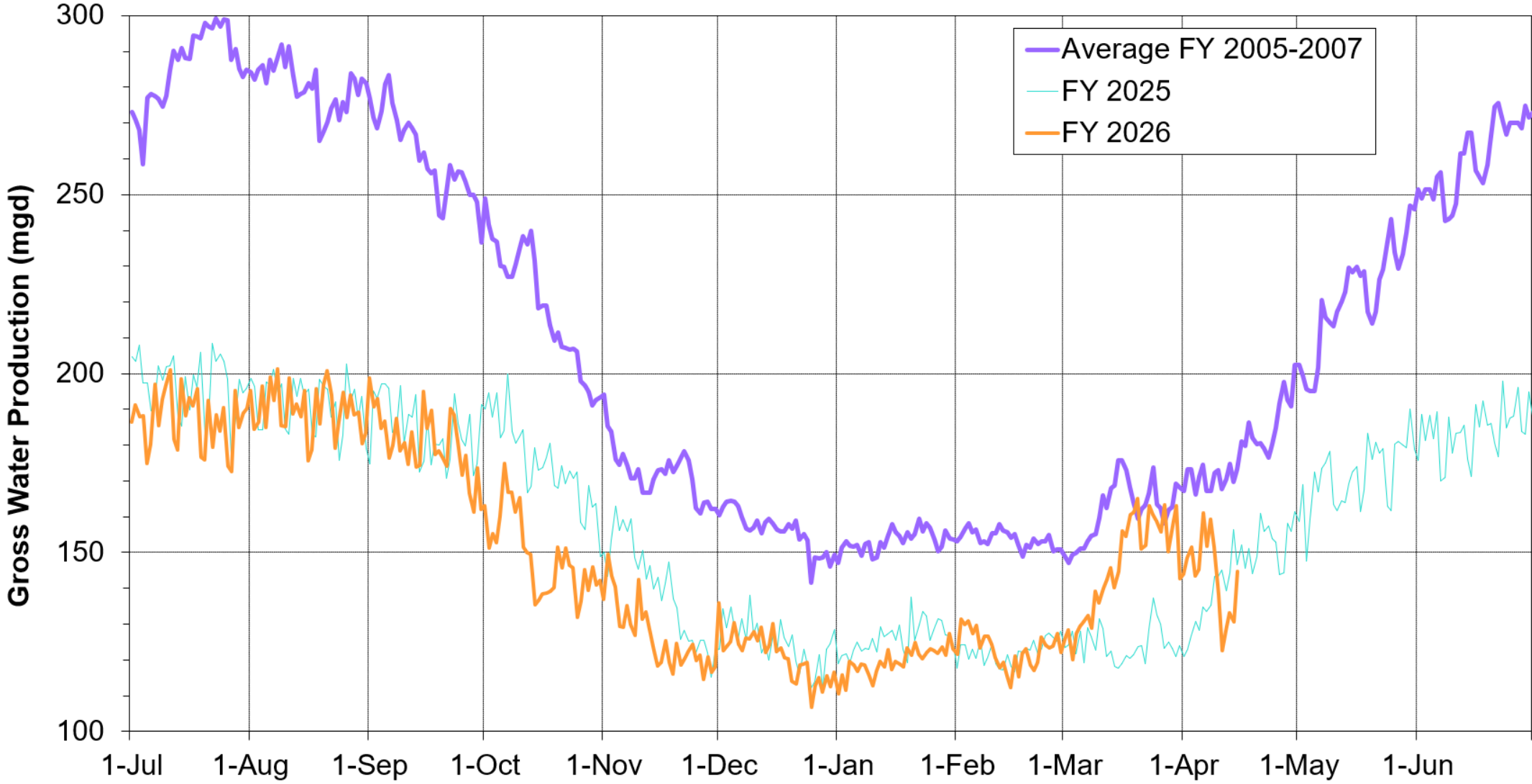


Pardee Reservoir Observation Point

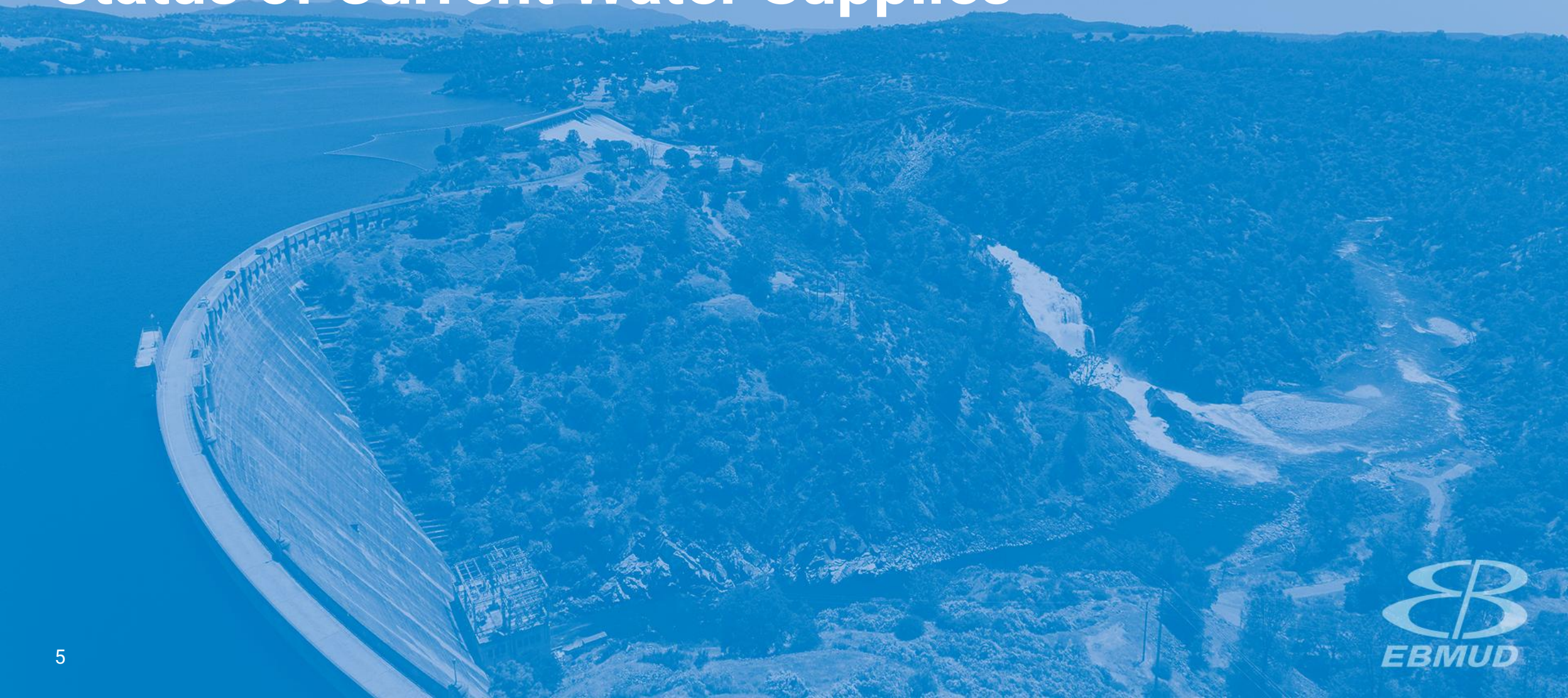
Status of District Water Demands/Production



Gross Water Production



Status of Current Water Supplies

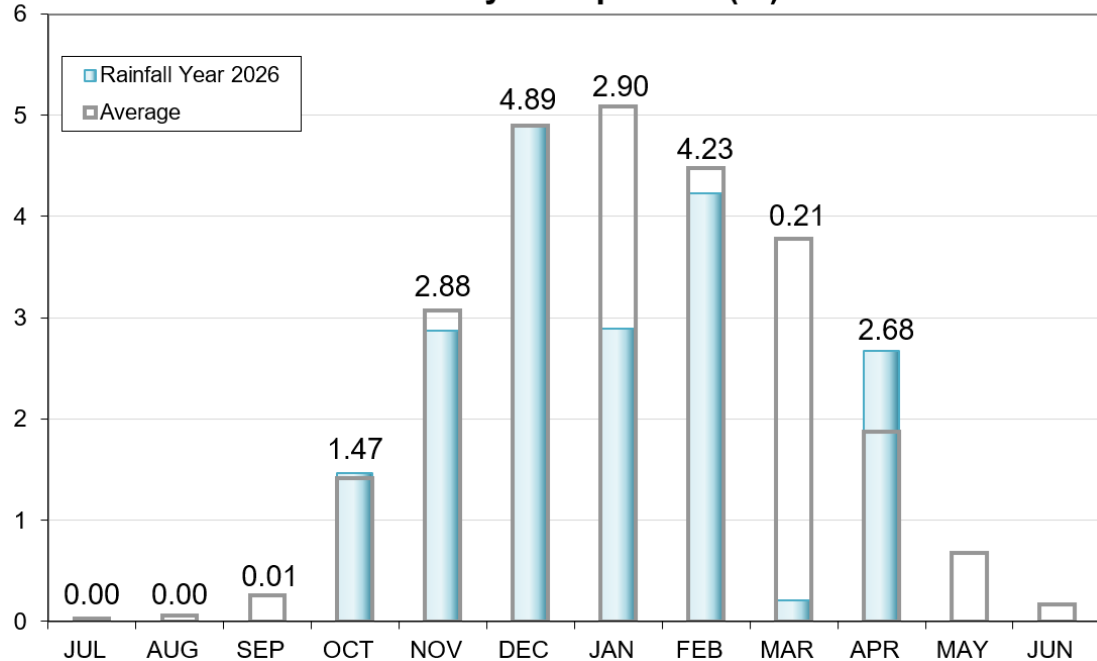


Precipitation as of April 15

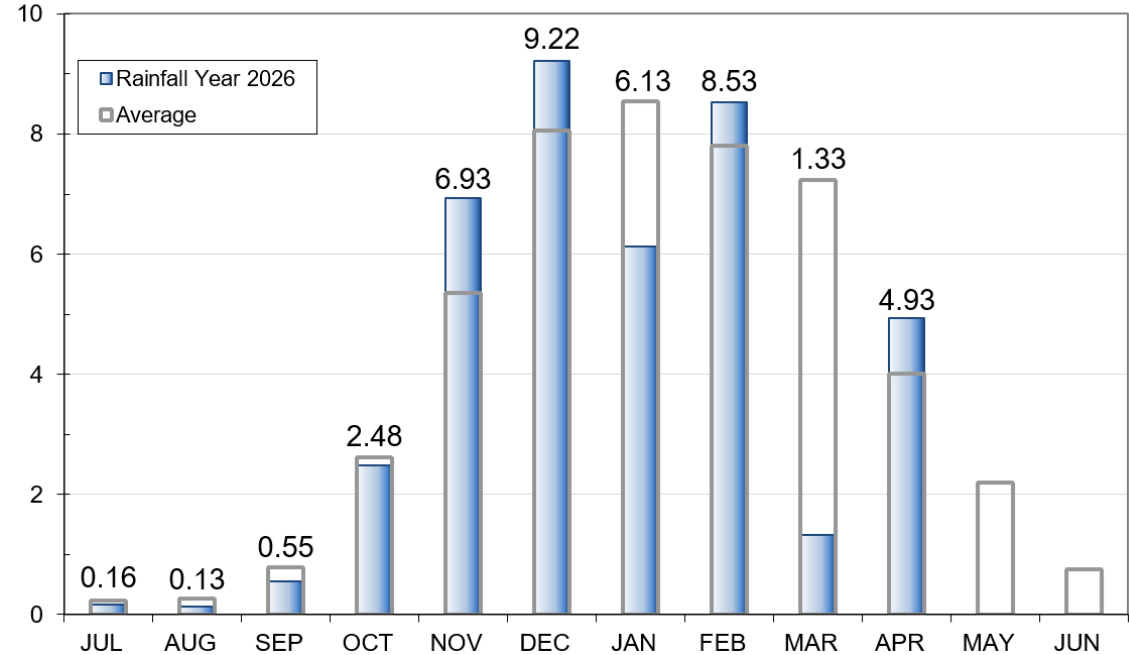
East Bay: 19.3" (77% of Avg)

Mokelumne 40.4" (94% of Avg)

East Bay Precipitation (in)



Mokelumne 4-Station Average Precipitation (in)

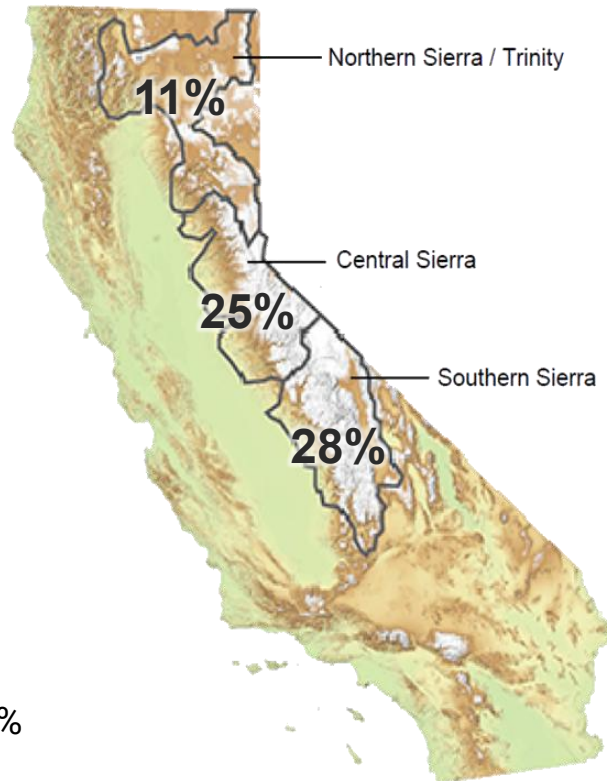


Snowpack as of April 15

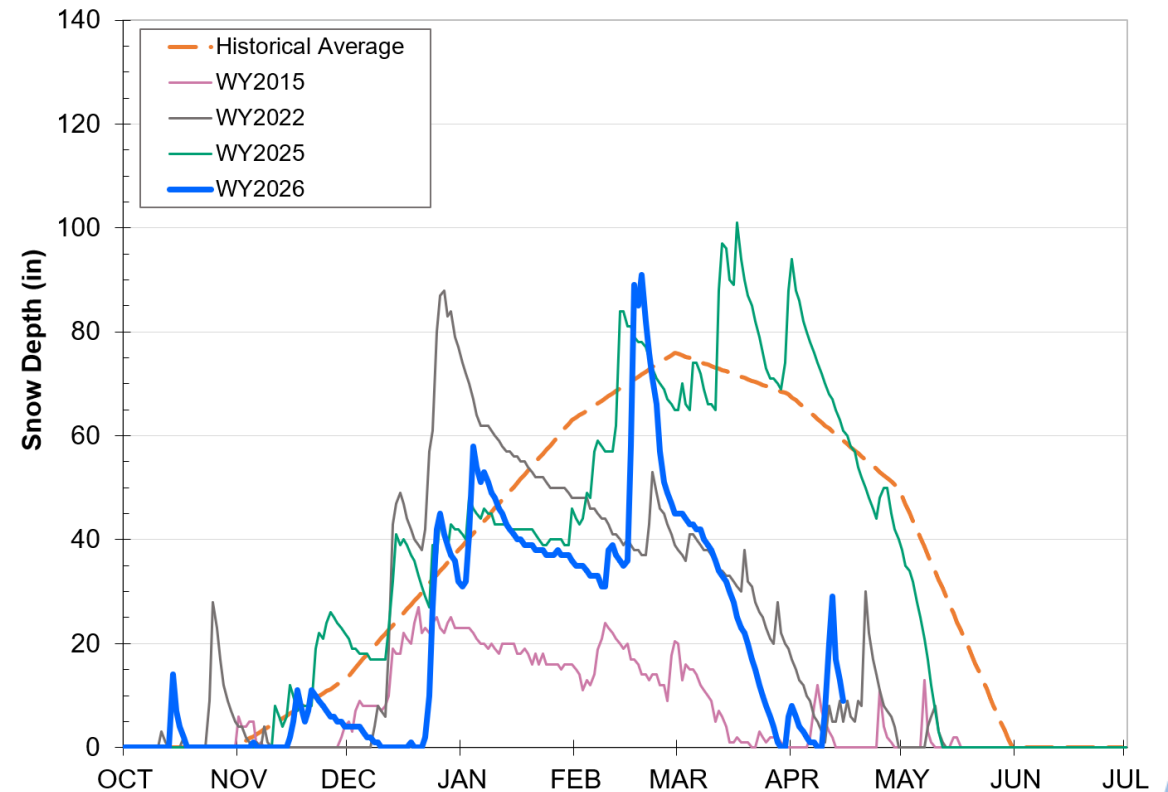
**Snow Water Equivalent:
25% of Normal in Central Sierra**



Data for: 15-April-2025
Statewide Average: 21%



Caples Lake Snow Depth



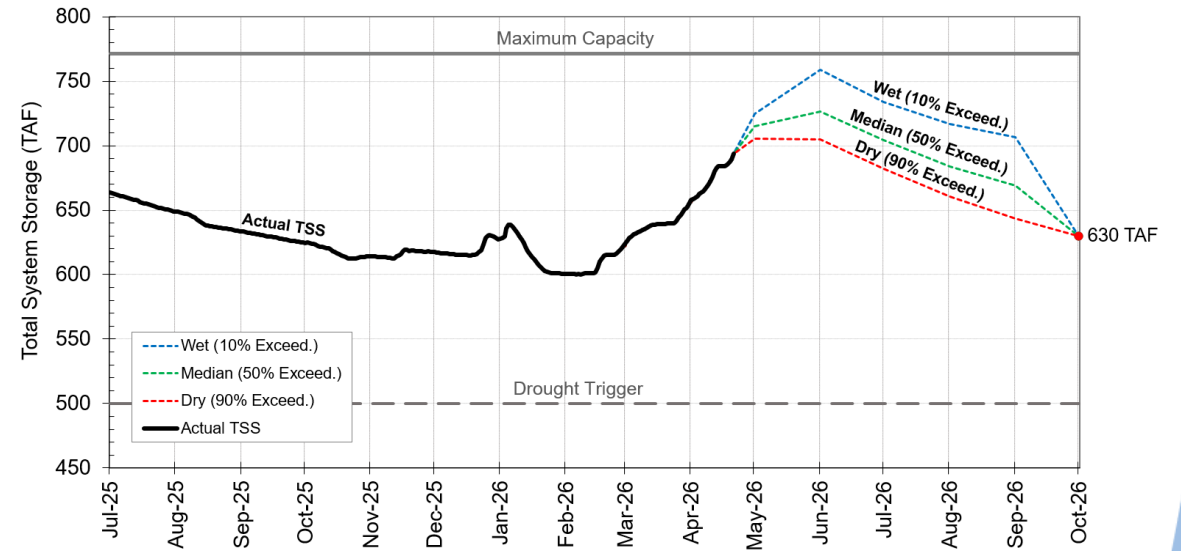
WY = Water Year

End of Season Storage as of April 15

Current: 684 TAF (109% of Avg)

Projected: 630 TAF by 9/30/2026

| Reservoir | Current Storage (TAF) | Percent of Average | Percent of Capacity |
|---------------------|-----------------------|--------------------|---------------------|
| Pardee | 196 | 104% | 96% |
| Camanche | 349 | 115% | 84% |
| East Bay | 139 | 100% | 92% |
| Total System | 684 | 109% | 89% |



Avg = average

TAF = Thousand Acre Feet

Anticipated Water Supply Obligations



Water Supply Flow Release Obligations 2026

- JSA 'Below Normal' release schedule from Camanche Reservoir
 - DWR Bulletin 120 Runoff Forecast is 546 TAF (74% of Avg)
 - End of September Total System Storage is full at 630 TAF
- Full entitlements and requests
 - Woodbridge Irrigation District base supply: 60 TAF
 - Jackson Valley Irrigation District: 3.85 TAF
 - North San Joaquin County Water Conservation District: 10 TAF
- No surplus water available based upon current projections

Recommended Actions

- File the Water Supply Availability and Deficiency Report which determines that projected runoff equates to 'Below Normal' year flows for Joint Settlement Agreement and all other release obligations
- Declare the District's water supply is sufficient for meeting customer demands in 2026 based on current projections

Questions?



Flowing
into the
Future