



Employees' Retirement System

Actuarial Valuations and Contribution Rates

Board of Directors

February 24, 2026

Steven Goodman-Leibof, Principal Management Analyst

Introduction

- Under Ordinance No. 40 (the Retirement Ordinance), Actuarial Valuations for the Retirement System are required at least every two years
- Based on these Actuarial Valuations, the District and Retirement System adopt annual contribution rates
- The District's practice is to adopt actuarial valuations and set contribution rates each year
- The Board is being asked to accept the Actuarial Valuations and adopt Retirement Board and staff recommended Employer Contribution Rates

Fiscal Year (FY) 2025 Actuarial Valuations

Select Plan Data	Pension	Health Insurance Benefit (HIB)	Total	Overall Annual Change
Market Value of Assets	\$2.74b	\$83m	\$2.83b	+\$309m
<i>previous year data</i>	<i>\$2.45b</i>	<i>\$71m</i>	<i>\$2.52b</i>	<i>----</i>
Valuation Value of Assets	\$2.59b	\$78m	\$2.67b	+\$212m
<i>previous year data</i>	<i>\$2.39b</i>	<i>\$70m</i>	<i>\$2.46b</i>	<i>----</i>
Funded Ratio*	79.3%	45.5%	77.6%	+2.5%
<i>previous year data</i>	<i>76.1%</i>	<i>51.8%</i>	<i>75.1%</i>	<i>----</i>
Unfunded Liability*	\$676m	\$94m	\$770m	-\$47m
<i>previous year data</i>	<i>\$752m</i>	<i>\$65m</i>	<i>\$817m</i>	<i>----</i>

*Valuation Value of Assets

- FY 2025 Actuarial reports have been reviewed and approved by the Retirement Board

Recommended Employer Contribution Rates

- Proposed FY 2027 rates are based on FY 2025 Actuarial Valuation
 - Contribution rates decreased for Pension due largely to robust investment earnings over the past several years that are being smoothed into the valuation of assets
 - Contribution rates are higher for HIB due to the enhancement in benefits established during labor negotiations
- The Retirement Board recommended adopting these rates at its January 29, 2026 meeting

	Recommended Rates FY 2027		Currently Adopted Rates FY 2026	
	1955/1980 Plan	2013 Plan	1955/1980 Plan	2013 Plan
Pension	43.58%	34.20%	45.43%	35.93%
HIB	5.76%	5.71%	4.43%	4.22%
Total*	49.34%	39.91%	49.86%	40.15%

* FY 2027 Total shown for illustration only. Due to HIB plan changes effective July 8, 2025, the 2013 Tier HIB rate is calculated on unlimited payroll, unlike the pension rate.

Recommended Employer Contribution Rates

1955/1980 Plan

- Set in Memoranda of Understanding
- HIB increased from 0.09% to 0.55%*

2013 Tier

- Pension rate governed by Public Employees' Pension Reform Act (PEPRA)
 - Set at 50% of Normal Cost
- HIB increased from 0.09% to 0.55%*

*Due to enhancements established during labor negotiations, the employee contribution rate for the HIB plan is set to rise incrementally to 0.40% effective January 1, 2026, to 0.70% effective January 1, 2027, and to 1.00% effective January 1, 2028. For display purposes in the table above, the HIB contribution rate is shown as 0.55%, representing an average between the January 1, 2026 contribution rate and the January 1, 2027 contribution rate.

Recommended Contribution Rates

	1955/1980 Plan	2013 Tier
Pension	8.66%	10.08%
HIB	0.55%	0.55%

Recommendation

Adopt Resolution to:

- Accept June 30, 2025 Actuarial Valuations
- Set Retirement System contribution rates for FY 2027 based on the actuarially determined contribution rates in the Valuations

Questions?



Flowing
into the
Future



Water Supply Update

Board of Directors
February 24, 2026

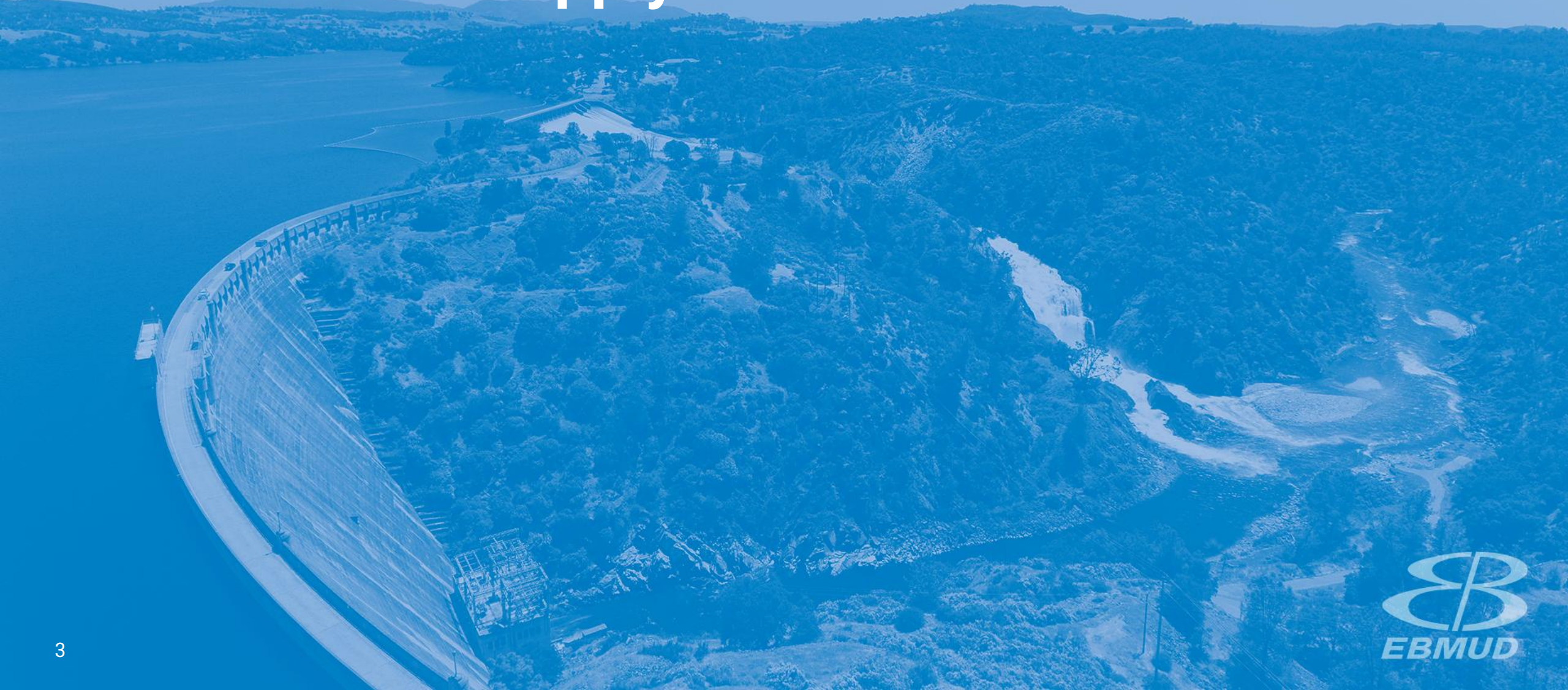
Roberto C. Cortez, Manager of Water Operations



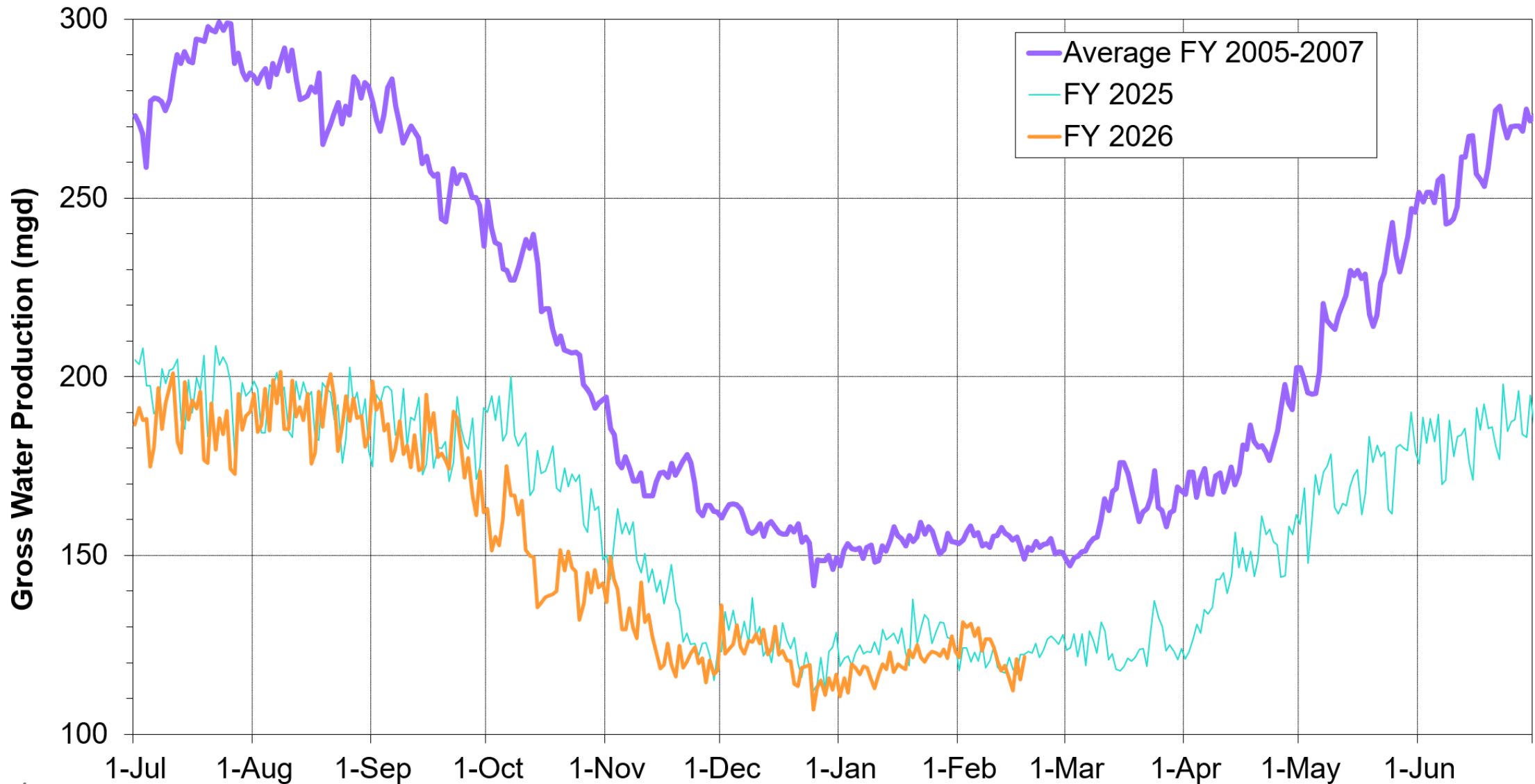
Briefing Topics

- Current Water Supply
- Seasonal Climate Outlook
- Water Supply Projection

Current Water Supply



Gross Water Production



Current Reservoir Storage

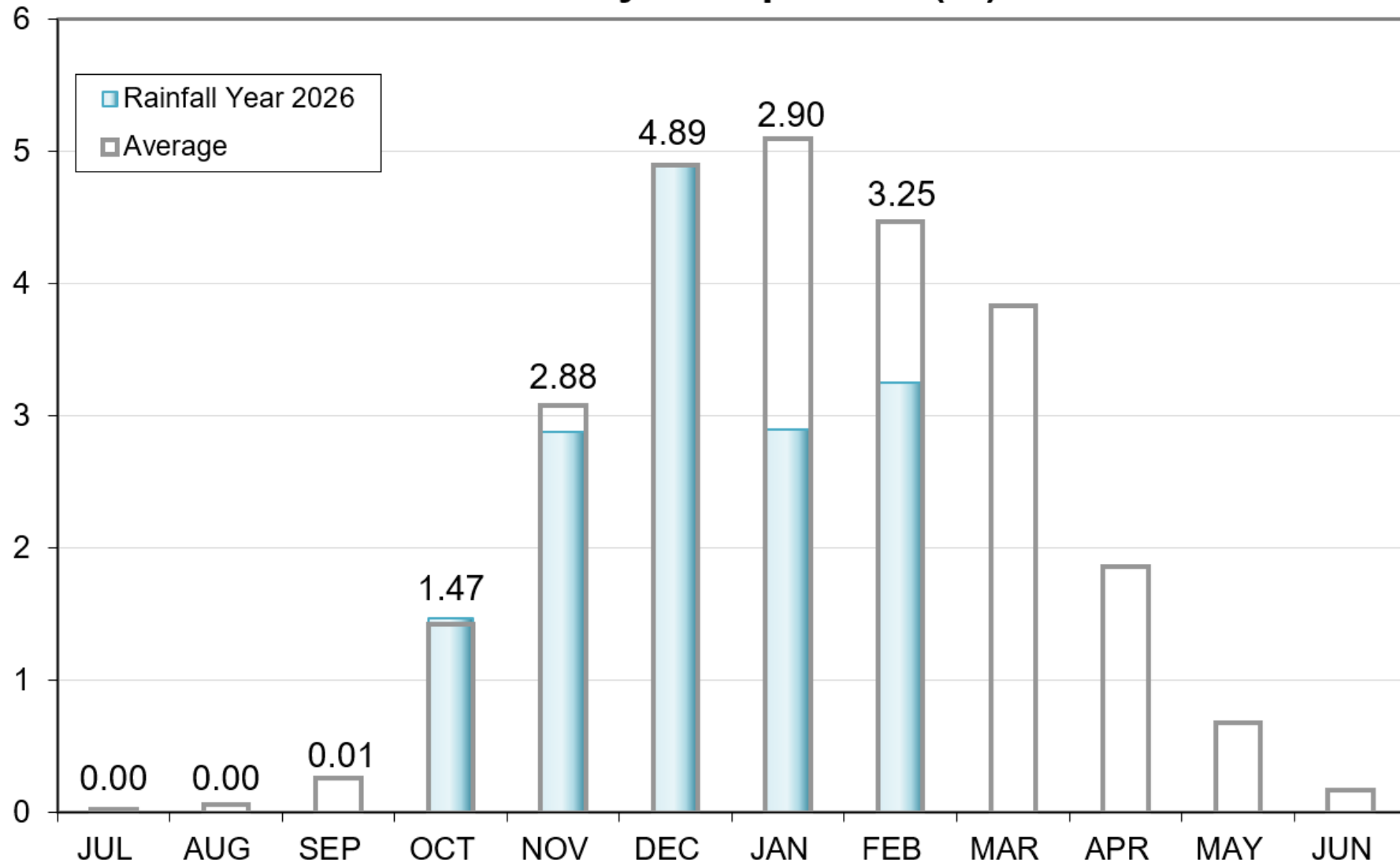
As of 2/18/2026	Current Storage	Percent of Average	Percent of Capacity
Pardee	183,350 AF	101%	90%
Camanche	294,300 AF	110%	71%
East Bay	134,920 AF	103%	90%
Total System	612,570 AF	106%	79%

AF: Acre-Feet

Precipitation as of February 18

East Bay: 15.4"
(84% of average)

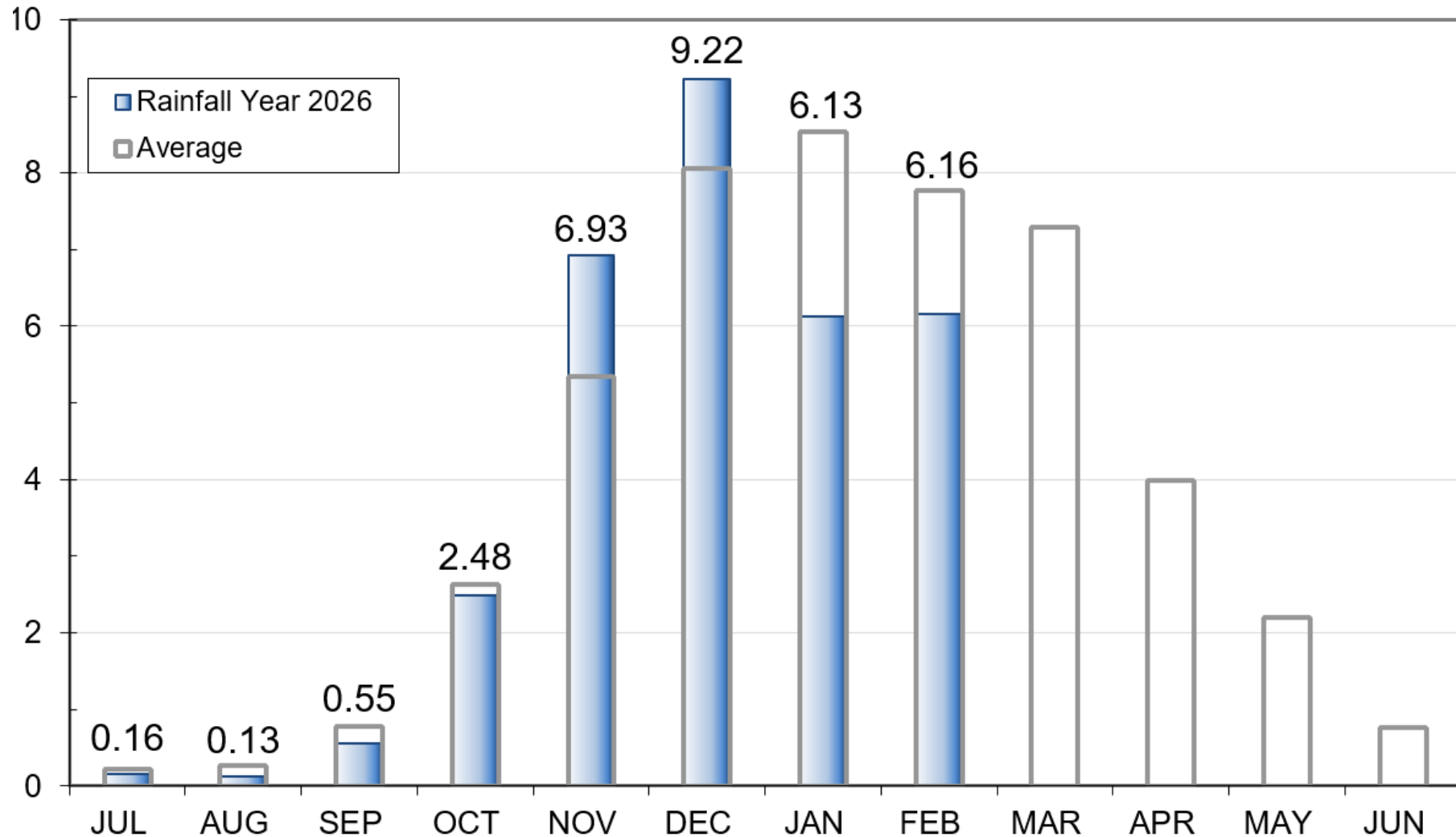
East Bay Precipitation (in)



Precipitation as of February 18

Mokelumne 4-Station Average Precipitation (in)

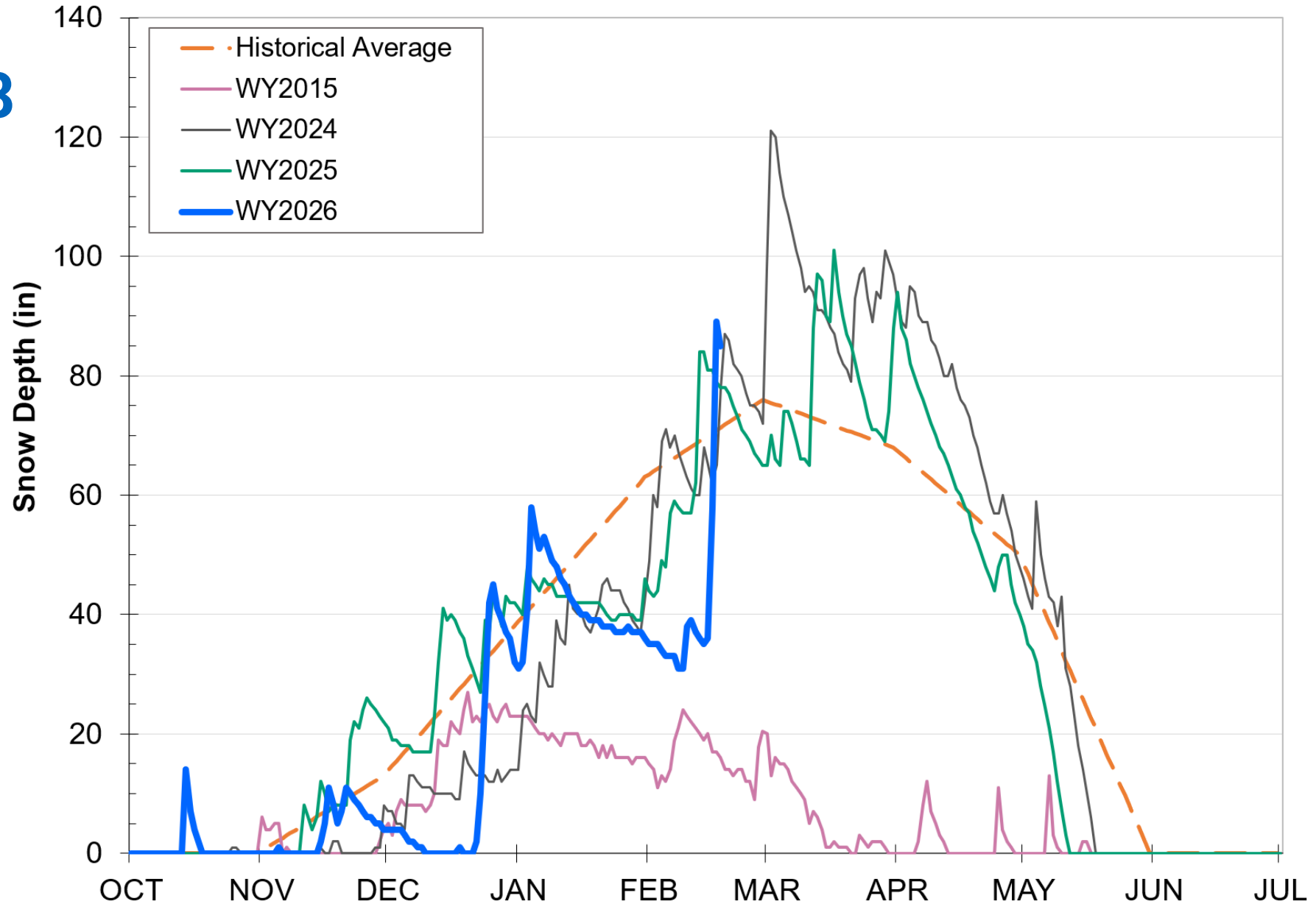
Mokelumne: 31.76"
(102% of average)



Caples Lake Snow as of February 18

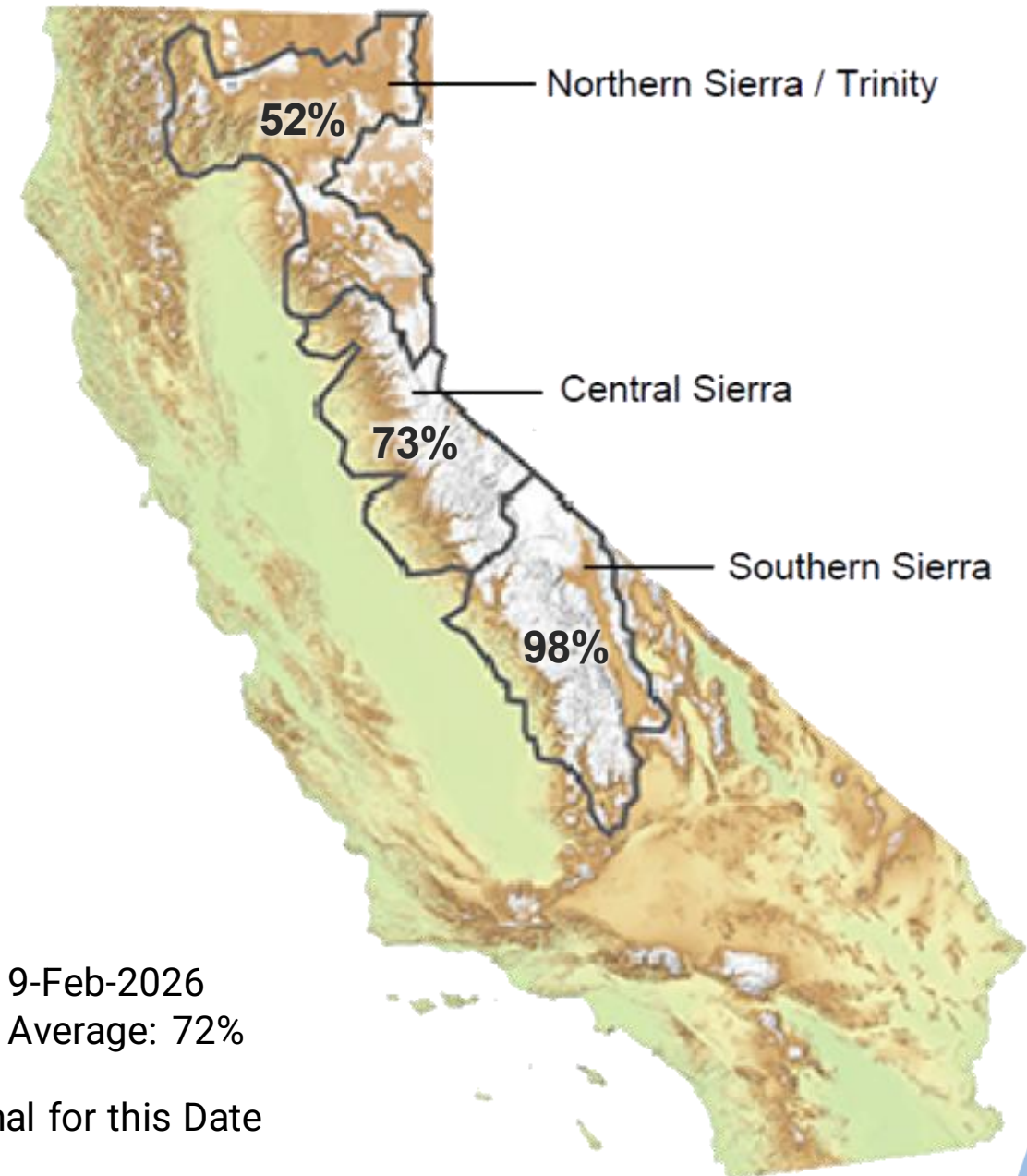
Snow Depth – 85.0”
(119% of average)

Snow Water
Content – 12.4”
(50% of average)



Snowpack as of February 19

Snow Water Equivalent:
73% of Normal in Central Sierra



Data for: 19-Feb-2026
Statewide Average: 72%

% of Normal for this Date

Seasonal Climate Outlook

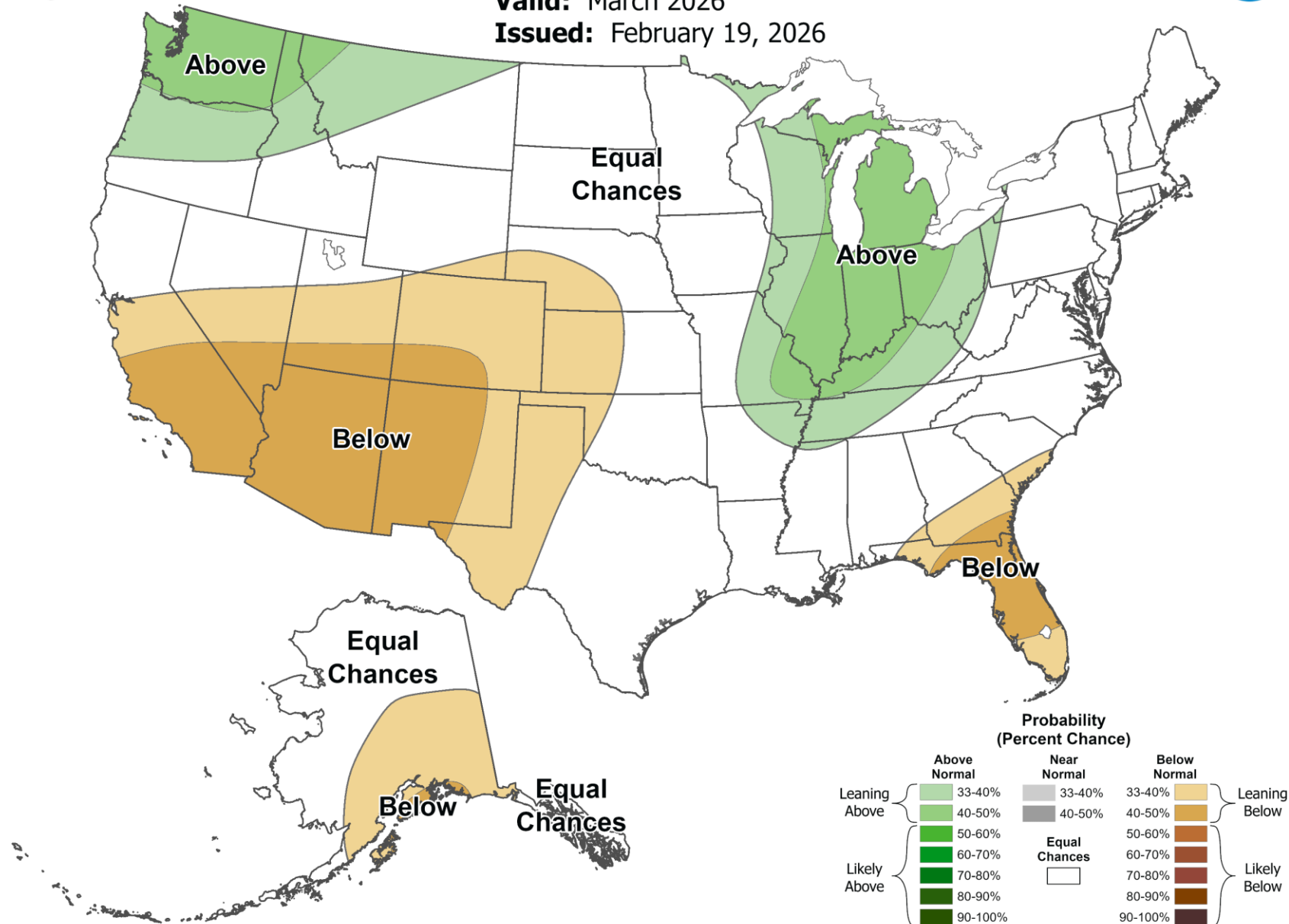


Seasonal Precipitation Outlook



Monthly Precipitation Outlook

Valid: March 2026
Issued: February 19, 2026

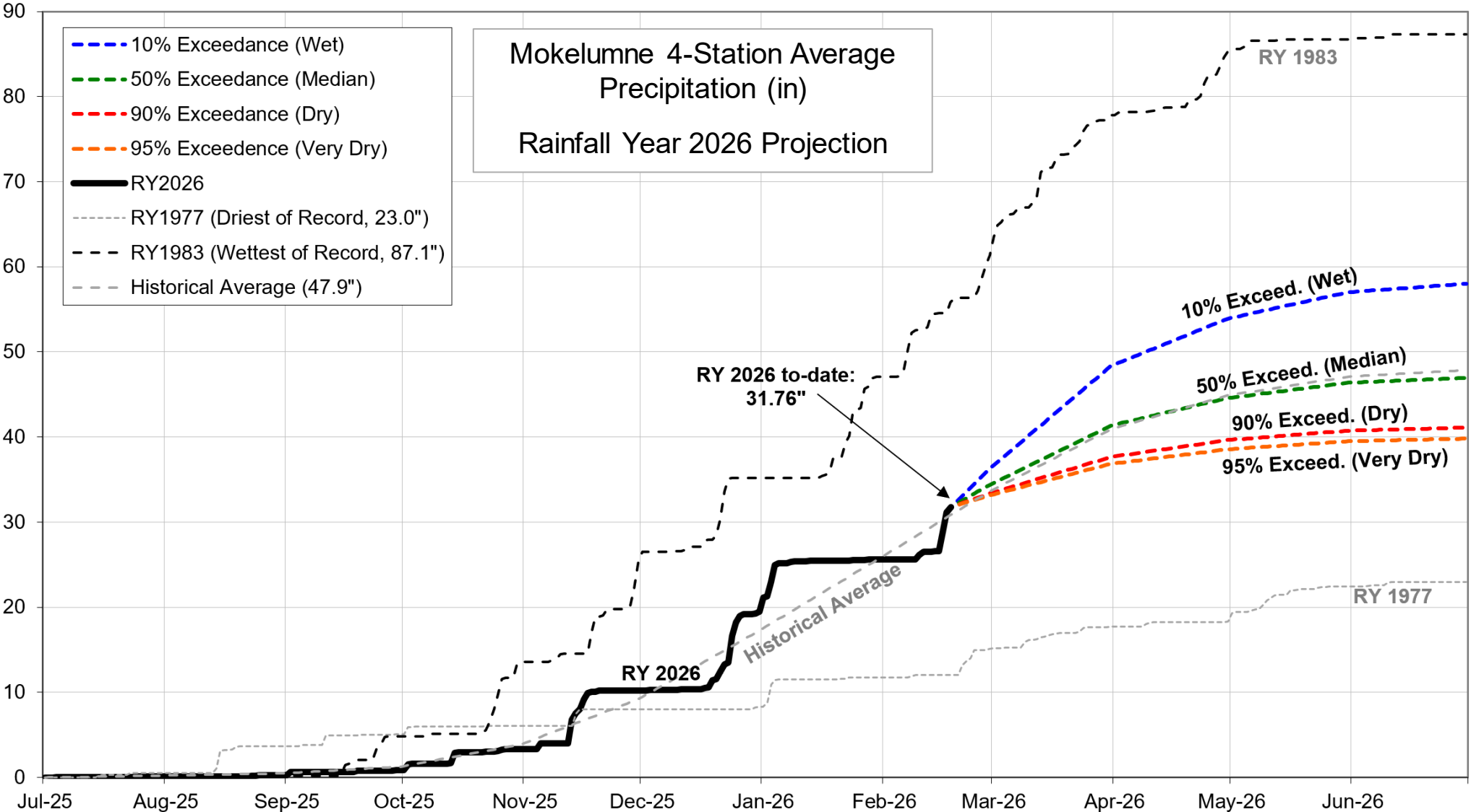


Water Supply Projection



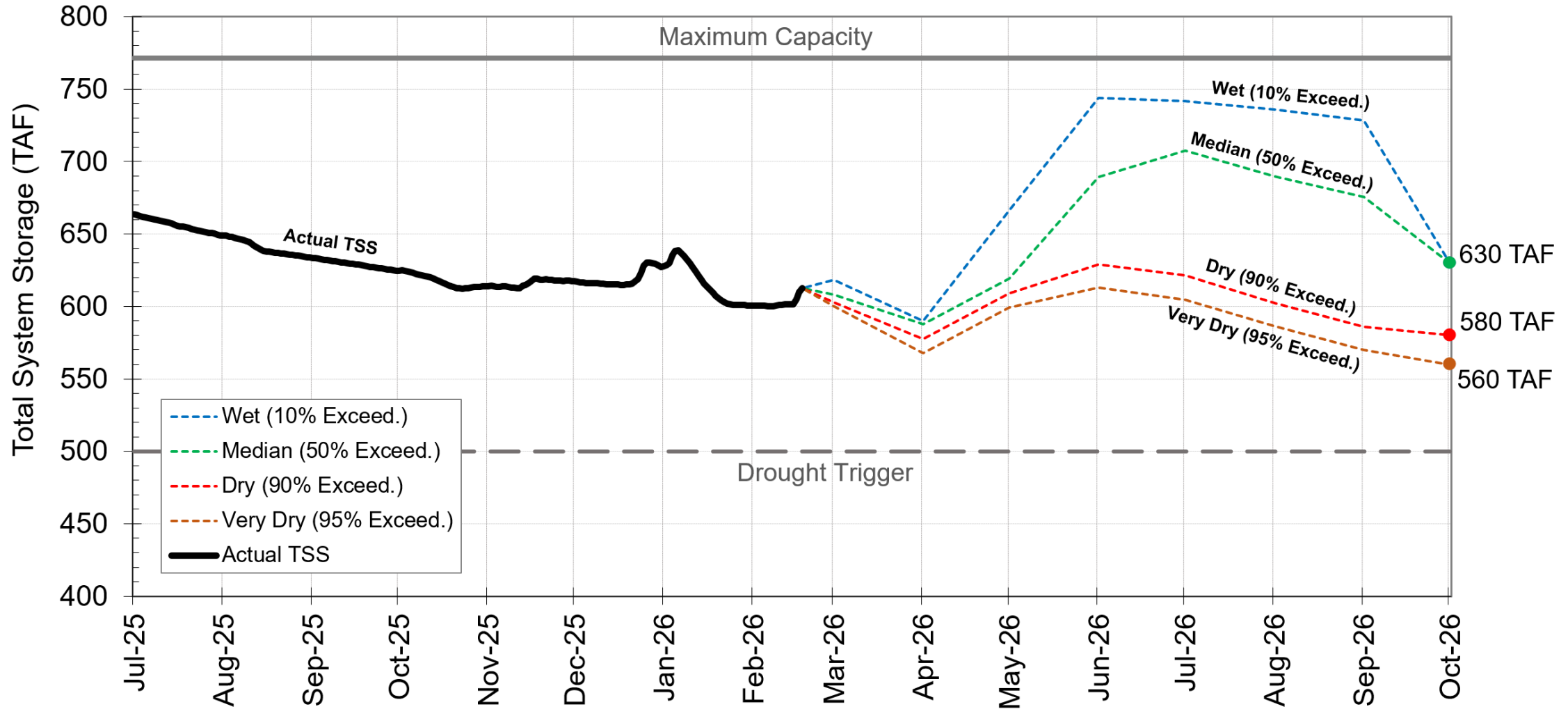
Projected Precipitation

Mokelumne Precipitation Rainfall Year 2026



End of Season Storage

2026 Total System Storage Projections





Questions?



This page is intentionally left blank.