



Water Supply Update

Board of Directors
January 27, 2026

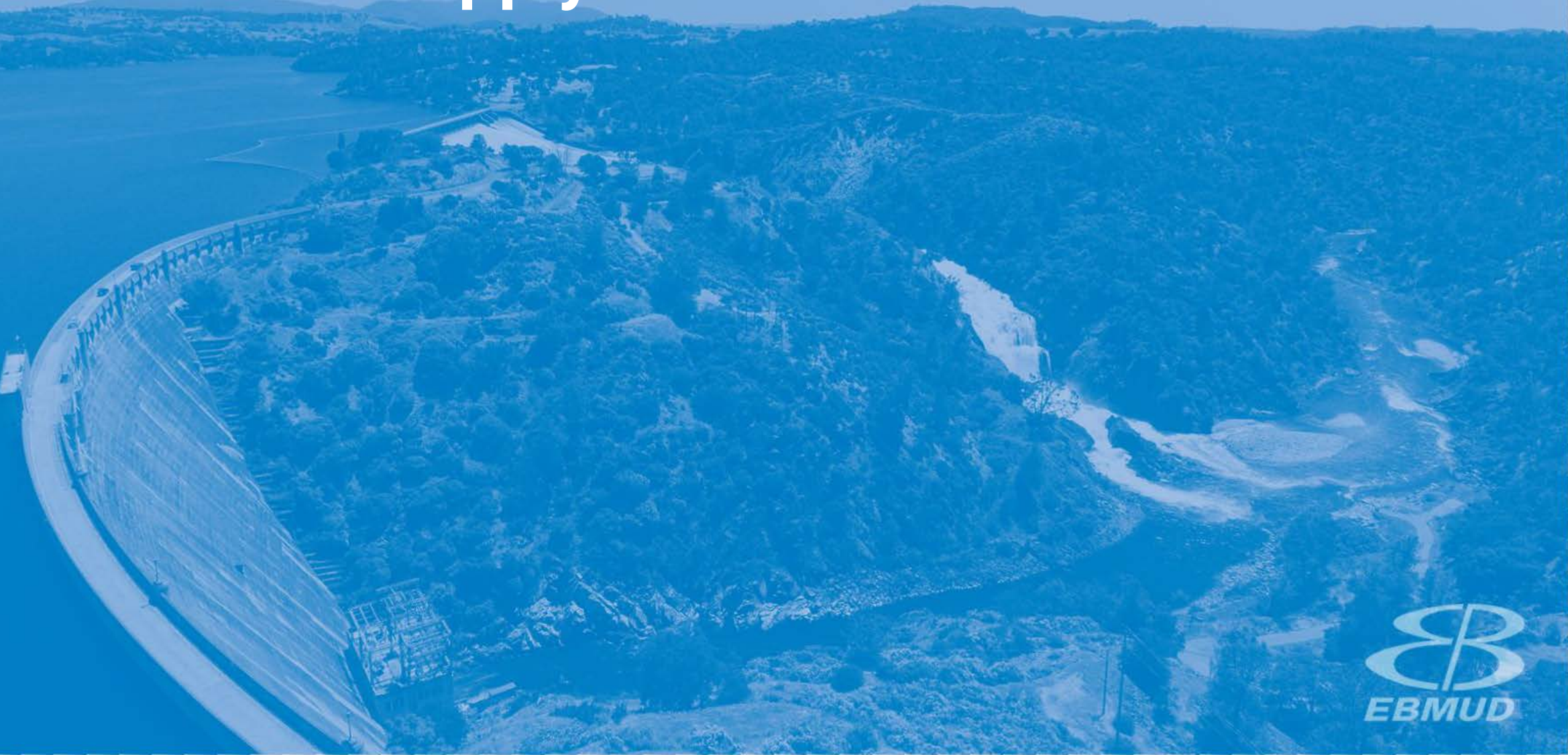
Roberto C. Cortez, Manager of Water Operations



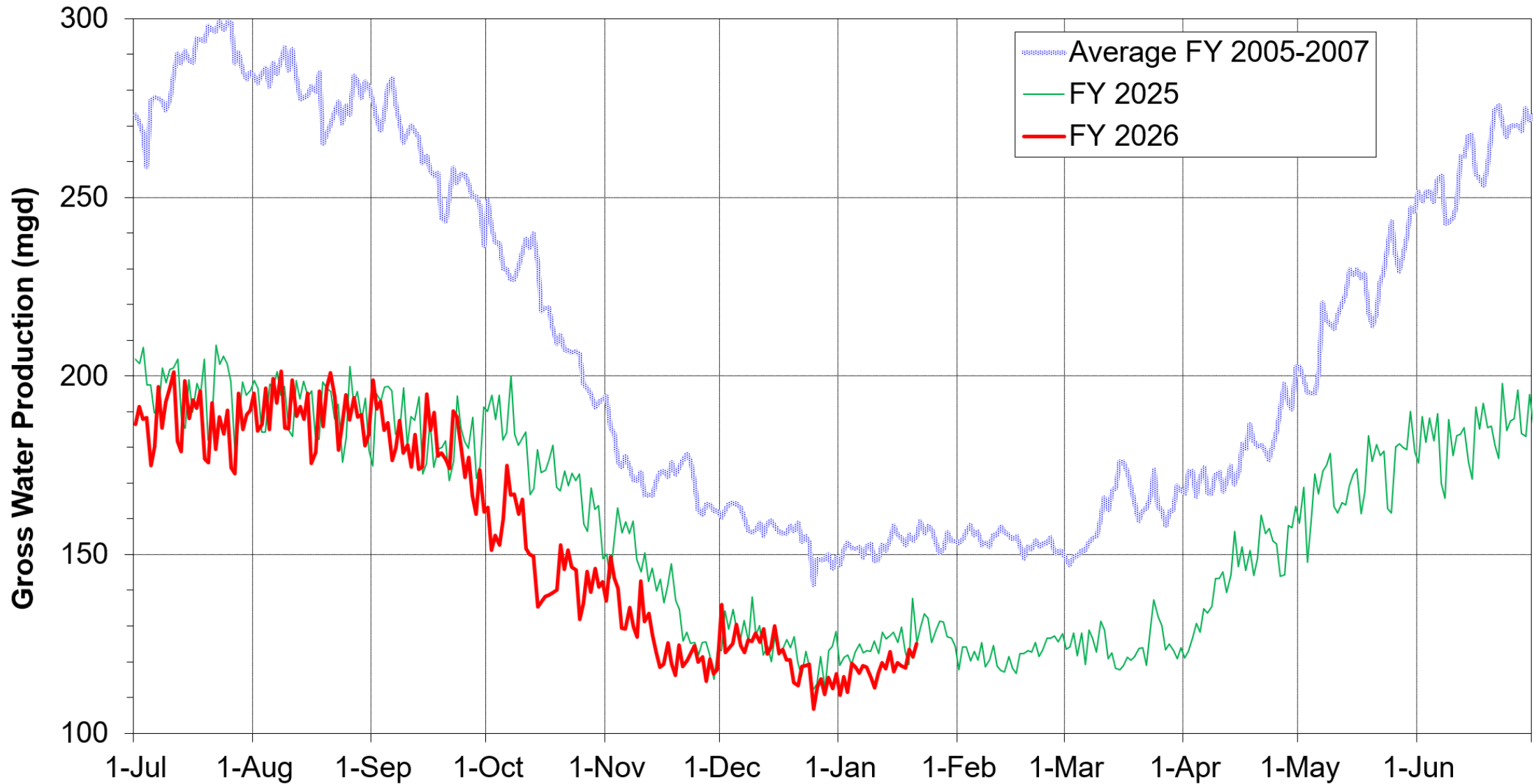
Briefing Topics

- Current Water Supply
- Seasonal Climate Outlook
- Water Supply Projection

Current Water Supply



Gross Water Production



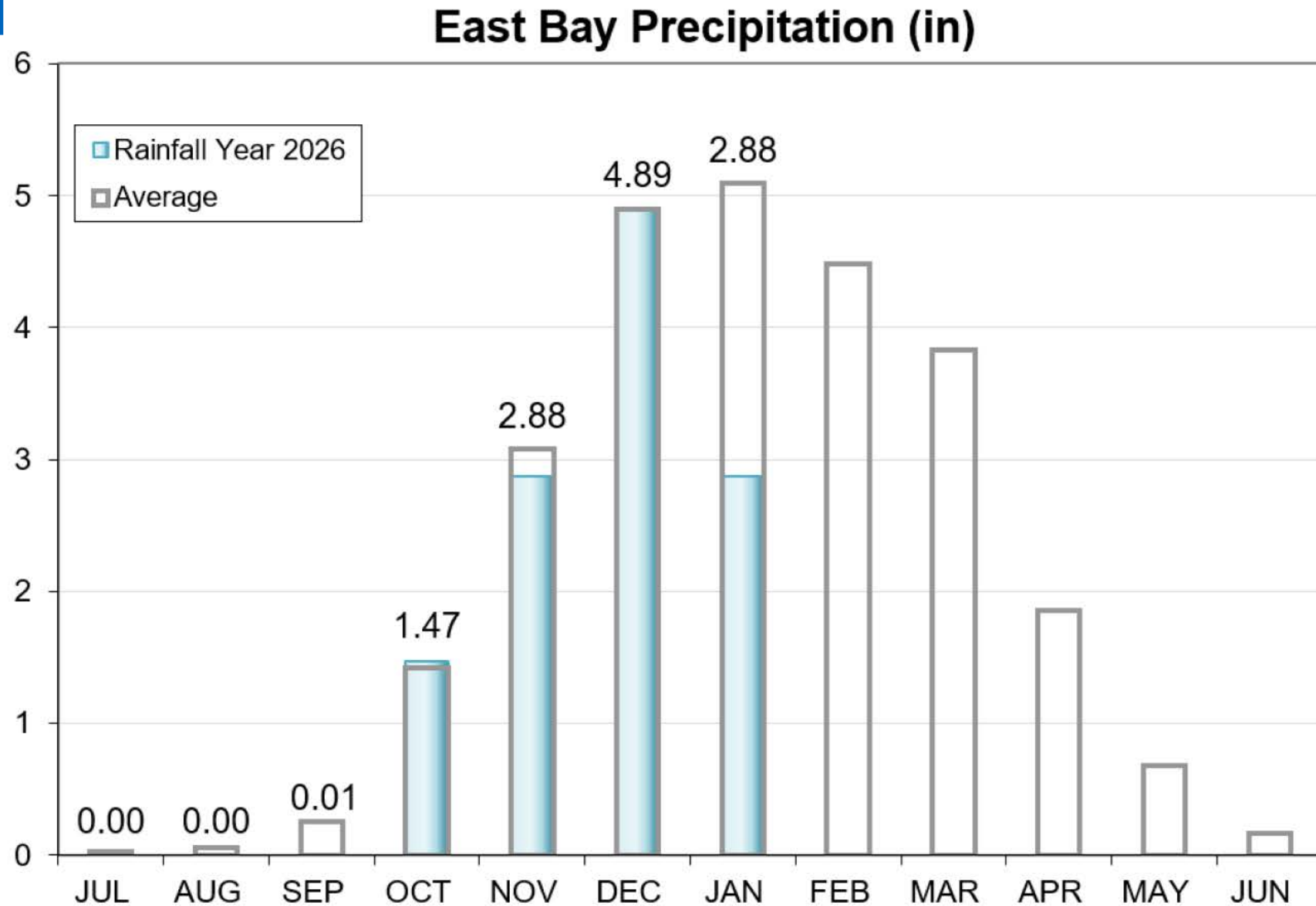
Current Reservoir Storage

As of 1/21/2026	Current Storage	Percent of Average	Percent of Capacity
Pardee	181,110 AF	101%	89%
Camanche	291,580 AF	113%	70%
East Bay	131,590 AF	106%	88%
Total System	604,280 AF	107%	78%

AF: Acre-Feet

Precipitation as of January 21

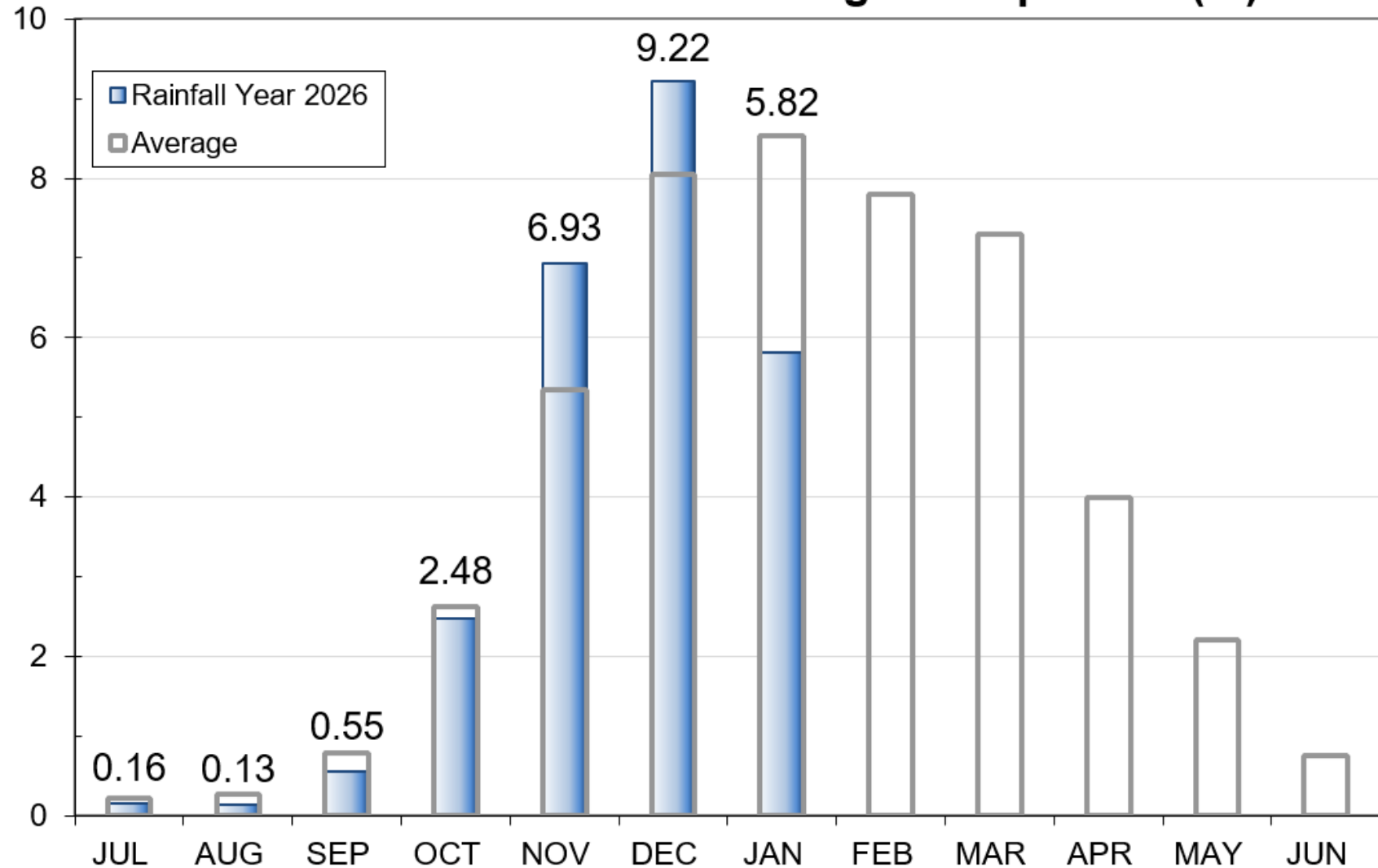
East Bay: 12.12"
(90% of average)



Precipitation as of January 21

Mokelumne: 25.29"
(109% of average)

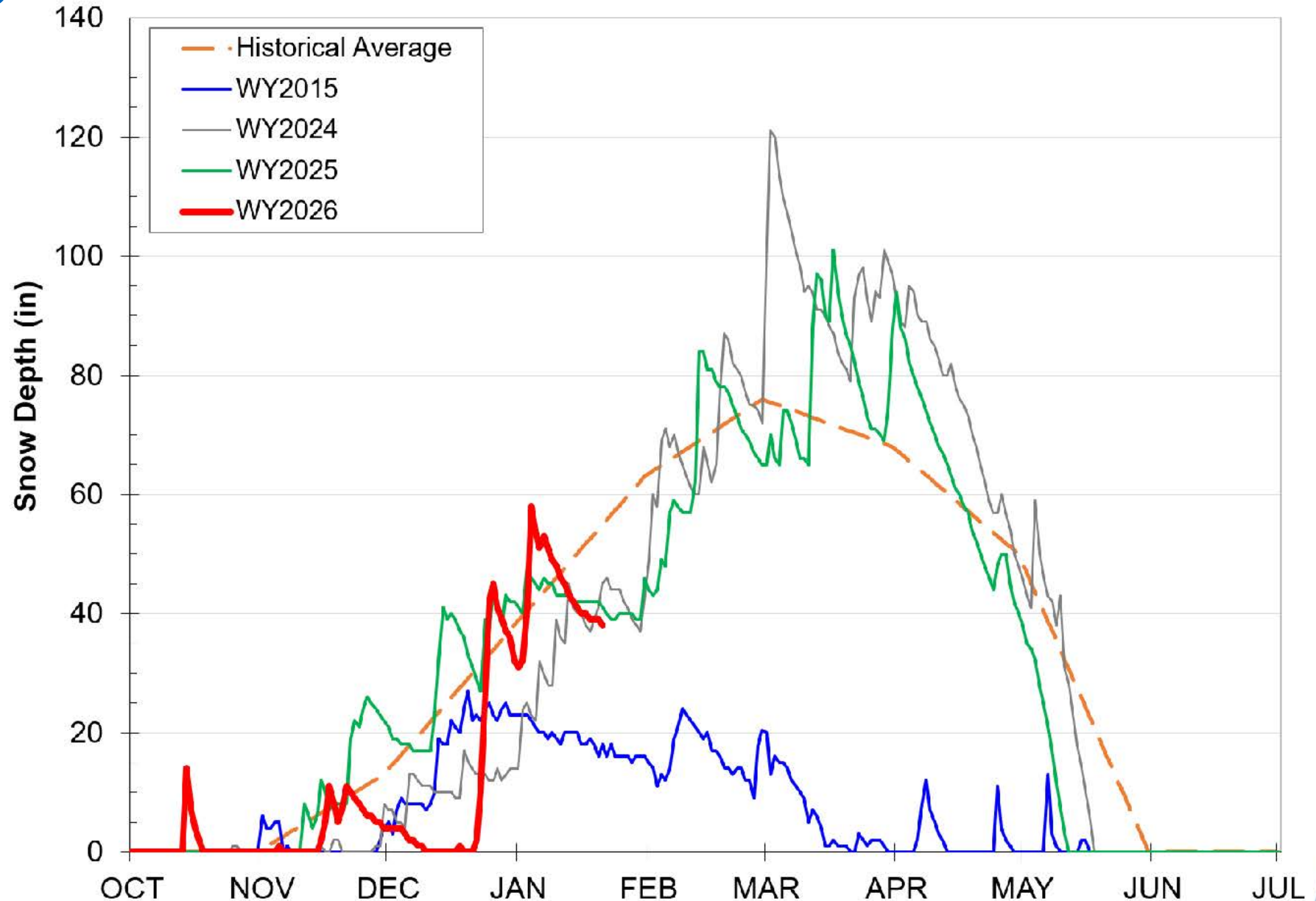
Mokelumne 4-Station Average Precipitation (in)



Caples Lake Snow as of January 21

Snow Depth – 38.0”
(69% of average)

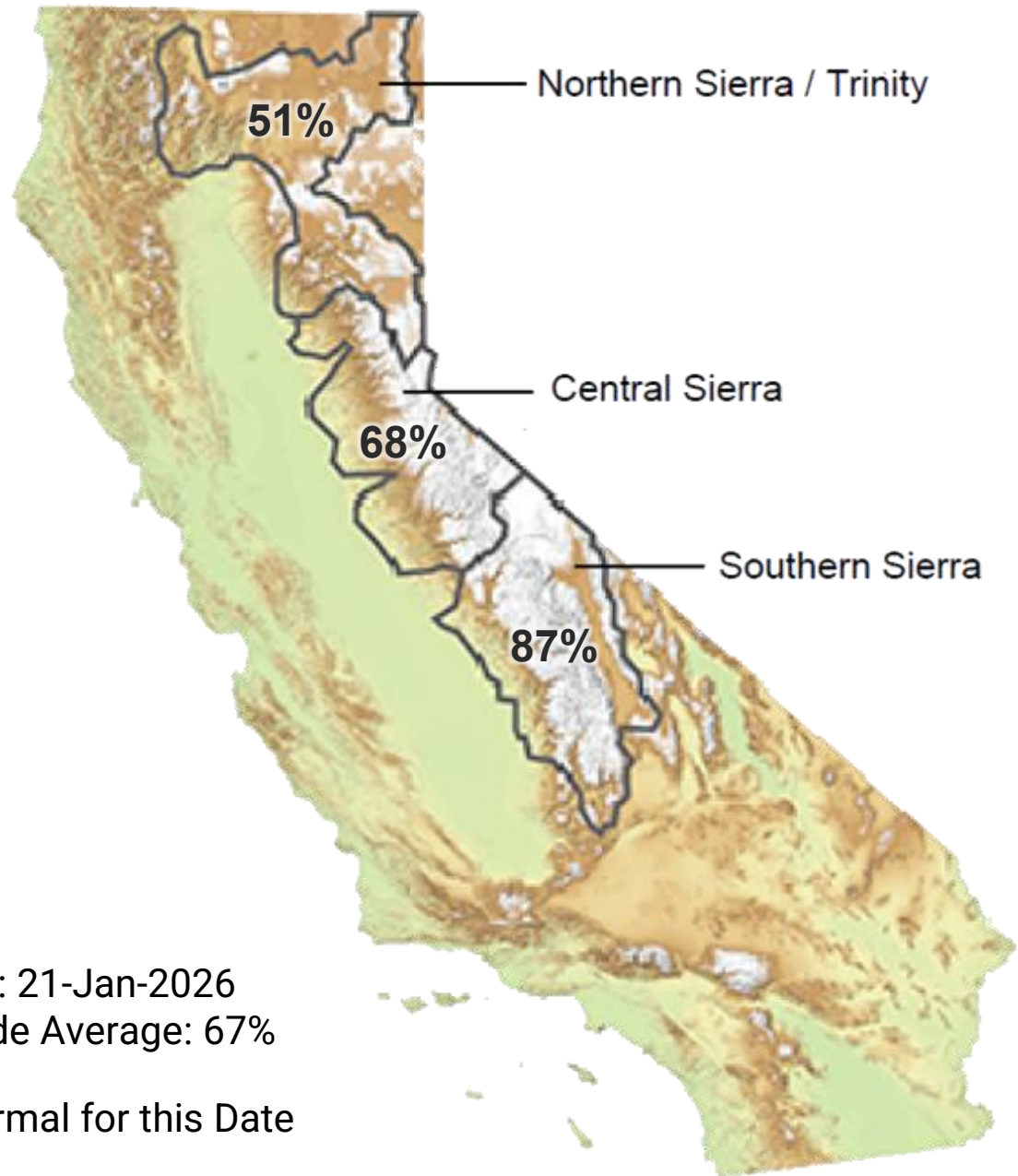
Snow Water
Content – 10.1”
(58% of average)





Snowpack as of January 21

Snow Water Equivalent:
68% of Normal in Central Sierra



Data for: 21-Jan-2026
Statewide Average: 67%

% of Normal for this Date

Seasonal Climate Outlook

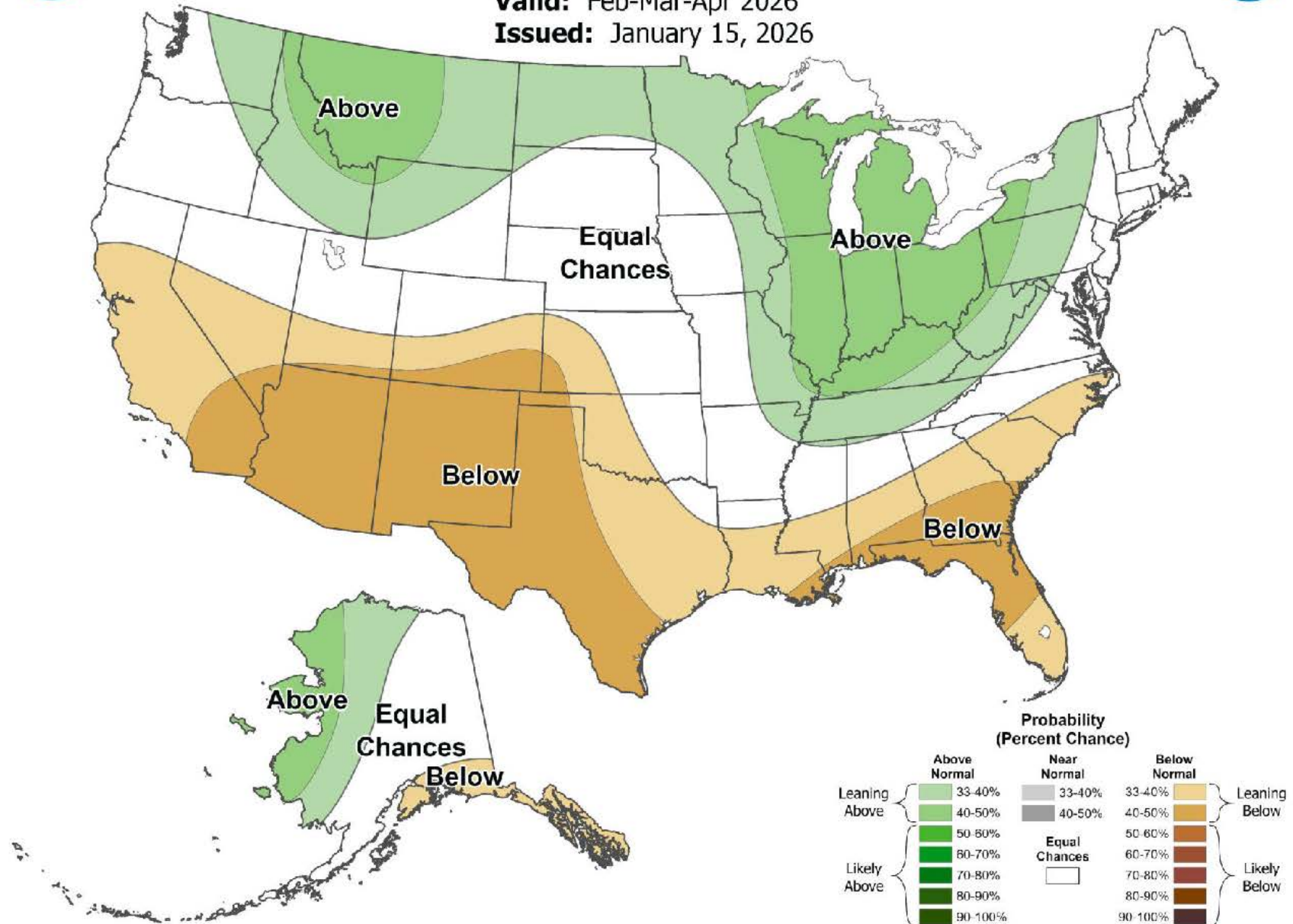
Seasonal Precipitation Outlook



Seasonal Precipitation Outlook



Valid: Feb-Mar-Apr 2026
 Issued: January 15, 2026

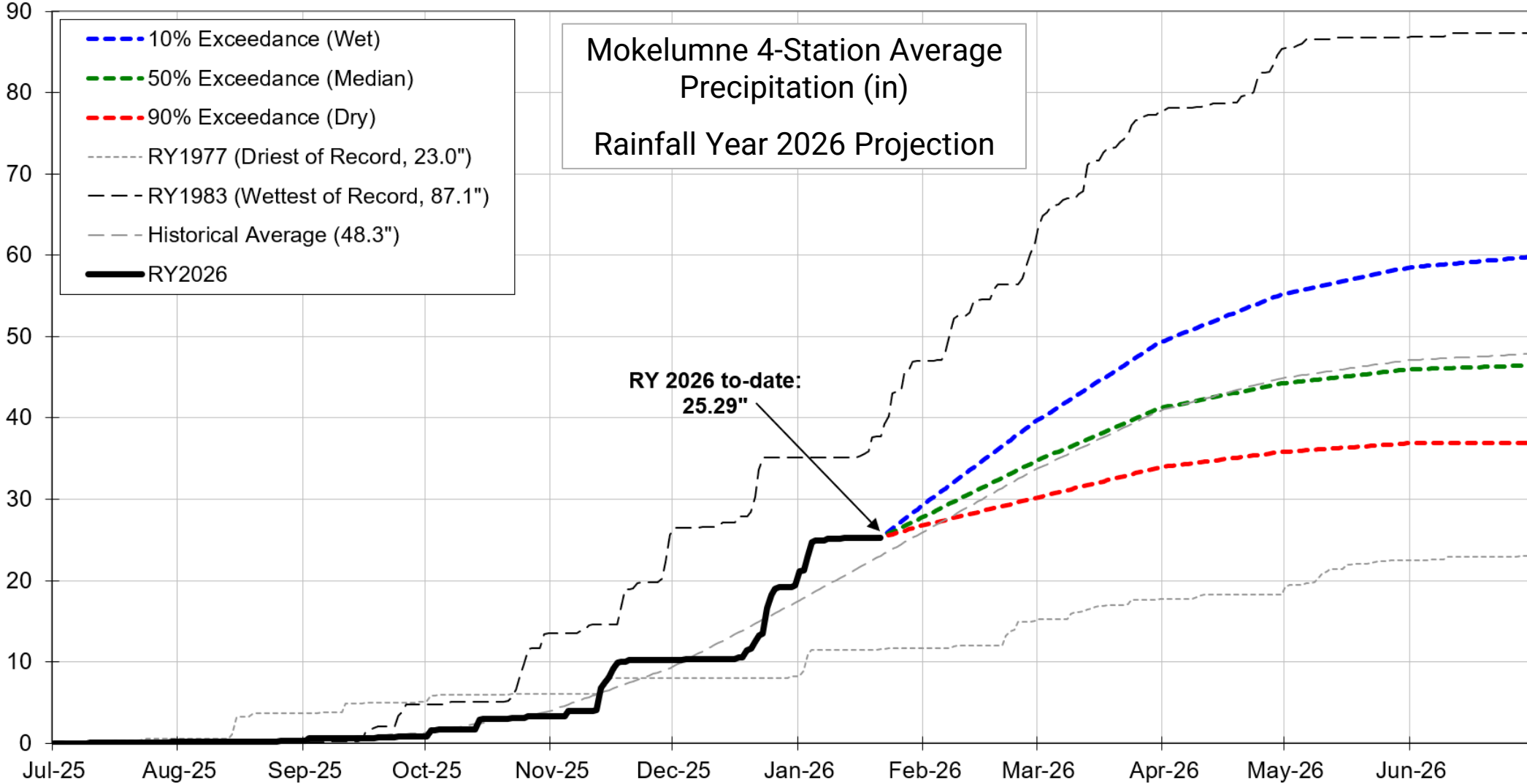


Water Supply Projection



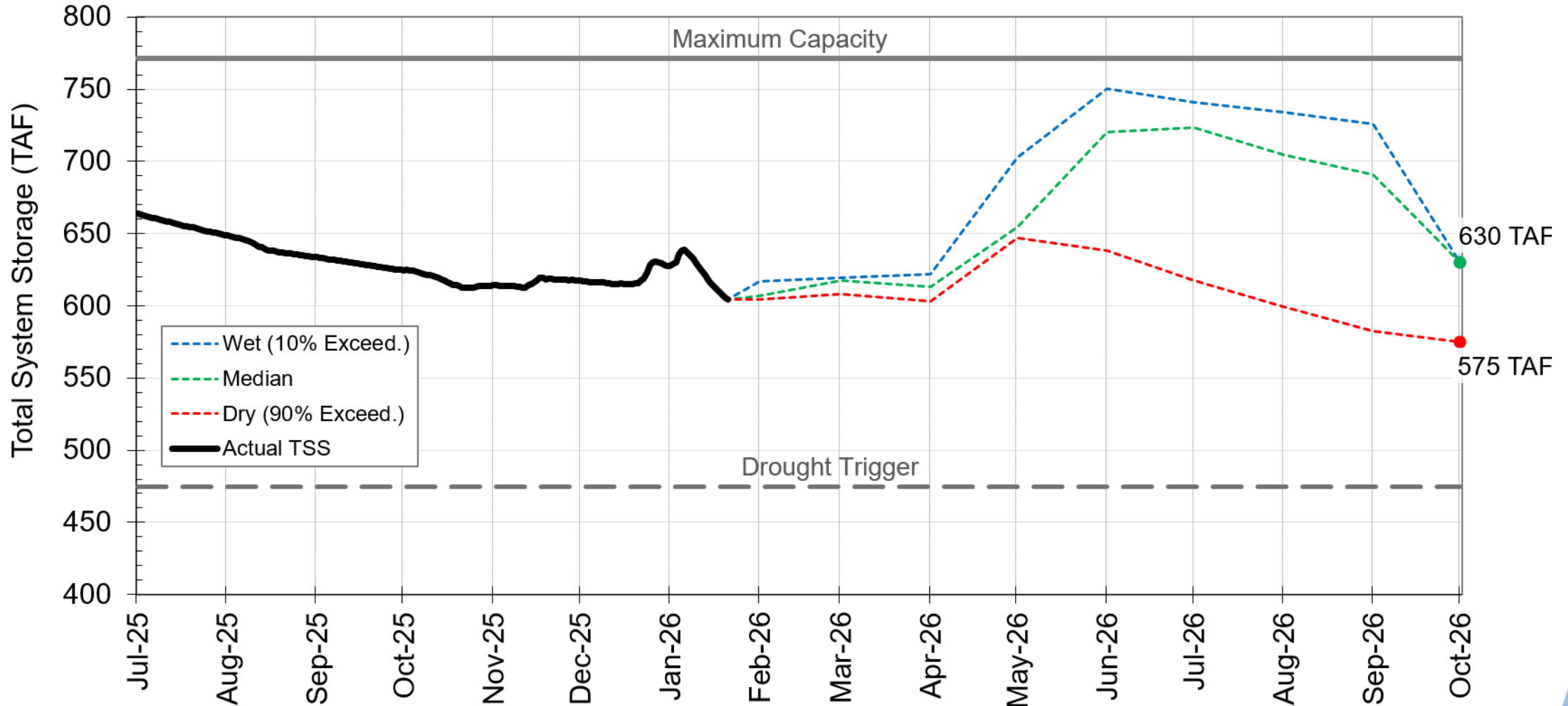
Projected Precipitation

Mokelumne Precipitation Rainfall Year 2026



End of Season Storage

2026 Total System Storage Projections





Questions?

