



FEDERAL LEGISLATIVE UPDATE

PRESENTED TO
BOARD OF DIRECTORS
EAST BAY MUNICIPAL UTILITY DISTRICT

ERIC SAPIRSTEIN
ENS RESOURCES, INC.
JANUARY 13, 2026

AGENDA

- **Introduction to ENS Resources, Inc.**
- **EBMUD Congressional Delegation**
- **2025 Washington Re-Cap**
- **2026 Federal Policy Outlook**
- **EBMUD Policy Priorities**
- **Closing Thoughts**

119TH CONGRESS

EBMUD House Congressional Delegation

COMMITTEE ASSIGNMENTS

➤ **John Garamendi**



- ❖ Transportation & Infrastructure
- ❖ Armed Services

➤ **Eric Swalwell**



- ❖ Judiciary
- ❖ Homeland Security

➤ **Mark DeSaulnier**



- ❖ Transportation & Infrastructure
- ❖ Health Education and the Workforce

➤ **Lateefah Simon**



- ❖ Oversight and Government Reform
- ❖ Small Business

119TH CONGRESS

EBMUD Senate Delegation

COMMITTEE ASSIGNMENTS

➤ Alex Padilla



- ❖ Budget
- ❖ Environment and Public Works
- ❖ Energy and Natural Resources
- ❖ Judiciary
- ❖ Rules (Ranking Member)

➤ Adam Schiff



- ❖ Agriculture
- ❖ Environment and Public Works
- ❖ Judiciary
- ❖ Small Business

2025 RE-CAP

- **Executive Orders: Impact on Environment & Water**
- **Reconciliation, Reorganization, and Reductions In Force**
- **Federal Budget and Continuing Resolution**

2026 FEDERAL OUTLOOK

- **Reconciliation & Fiscal Year 2027 Budget**
- **Reauthorization of Water Infrastructure Improvements for the Nation Act (WIIN Act)**
- **Water Resources Development Act (WRDA)**

2026 FEDERAL OUTLOOK

- **Forever Chemicals—PFAS Liability**
- **Low Income Household Water Assistance Program (LIHWAP)**
- **Clean Water and Safe Drinking Water Acts**
- **Permitting Reforms**

EBMUD 2026 POLICY PRIORITIES

- **Water Supply Reliability and Natural Resources Protection**
 - Defend and protect EBMUD's water supply interests and the Mokelumne River fishery
- **Water Quality**
 - Monitor development of water quality and pollution prevention-related legislation and policies at the federal level
 - Work to ensure EBMUD's interests are effectively communicated, including through appropriate national associations
- **Federal Funding Assistance**
 - Advance EBMUD's funding needs through relevant programmatic funding opportunities and congressionally-directed spending, if available

CLOSING THOUGHTS

- Slim House and Senate majorities complicate passage of legislation without bipartisan buy-in
- Midterm Elections Dynamics:
 - Redistricting: EBMUD, California Delegation, and National
 - Significant Member Retirements
- EBMUD Policy Priorities developed consistent with federal outlook for 2026
- EBMUD congressional delegation well positioned on key committees
- EBMUD enjoys strong support from delegation and key congressional committee leadership members



FEDERAL LEGISLATIVE UPDATE

PRESENTED TO
BOARD OF DIRECTORS
EAST BAY MUNICIPAL UTILITY DISTRICT

ERIC SAPIRSTEIN
ENS RESOURCES, INC.
JANUARY 13, 2026



Water Supply Update

Board of Directors
January 13, 2026

Roberto C. Cortez, Manager of Water Operations



Briefing Topics

- Water Year 2025 Review
- Current Water Supply
- Water Supply Projection

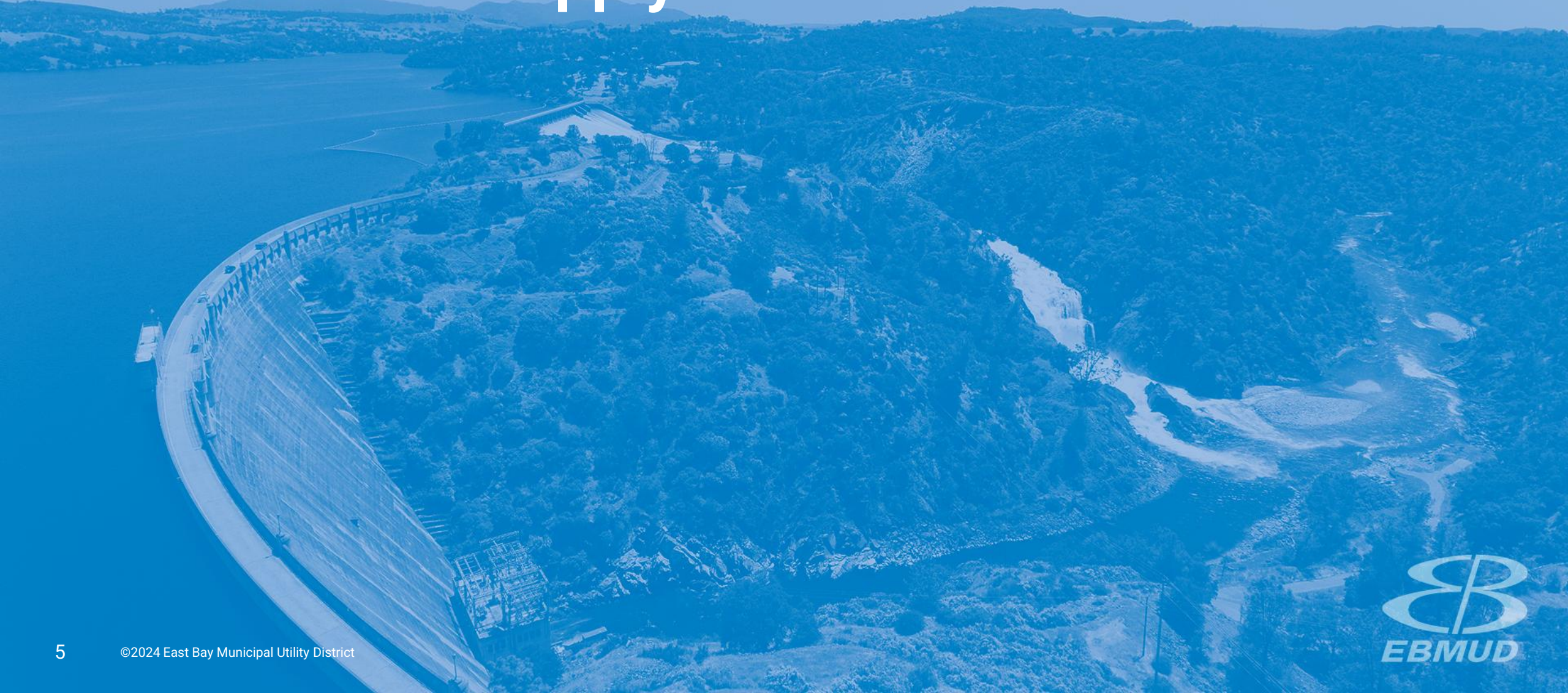
Water Year 2025 In Review

Water Year 2025 Review

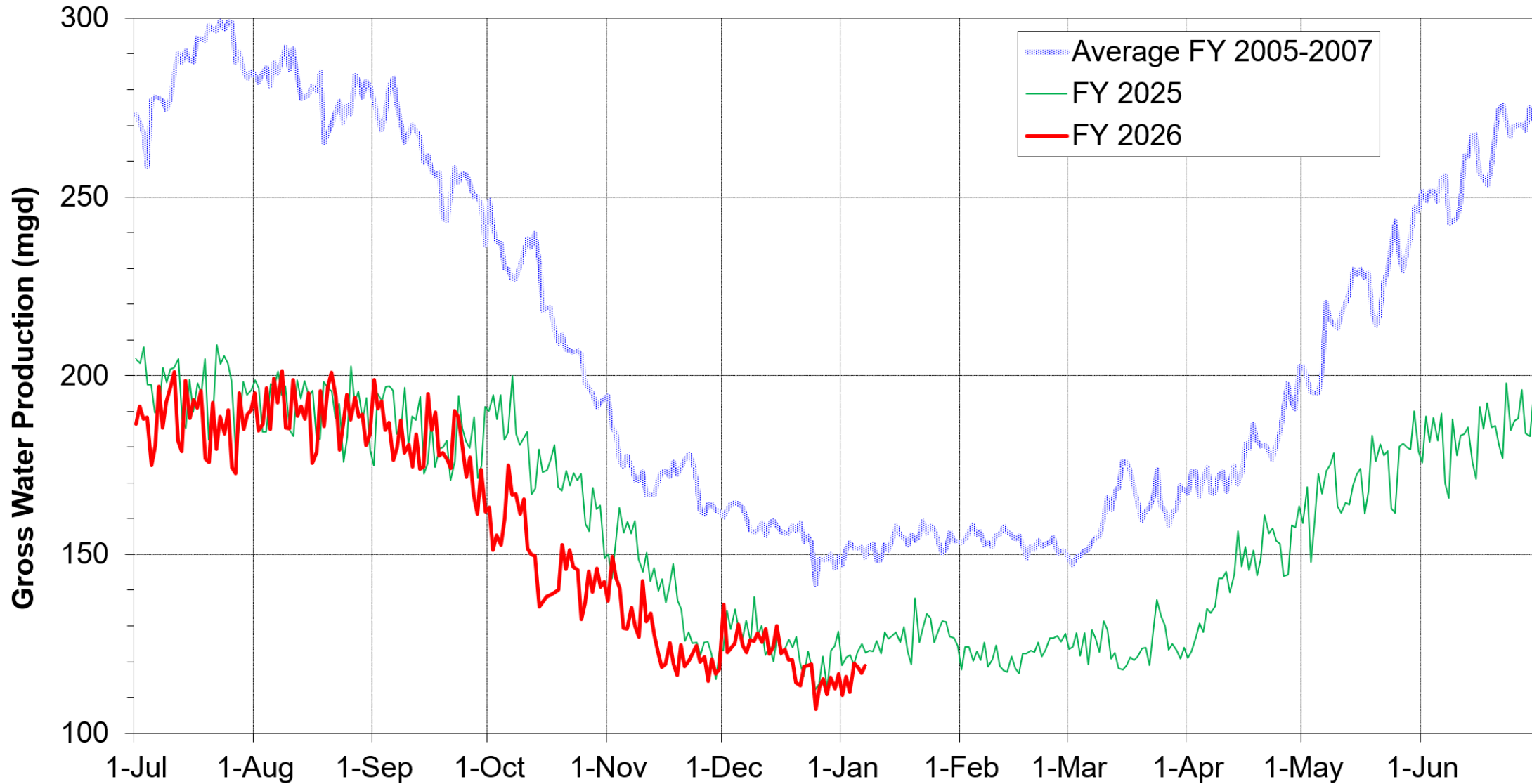
- Upper Mokelumne Precipitation: 36.1" (47.9" avg)
- Snowpack Water Content (Max): 24.2" (33.0" avg)
- East Bay Precipitation: 17.1" (25.9" avg)
- Total Unimpaired Runoff: 456 TAF (740 TAF avg)
- End of Water Year Storage: 625 TAF

TAF: Thousand Acre-Feet

Current Water Supply



Gross Water Production



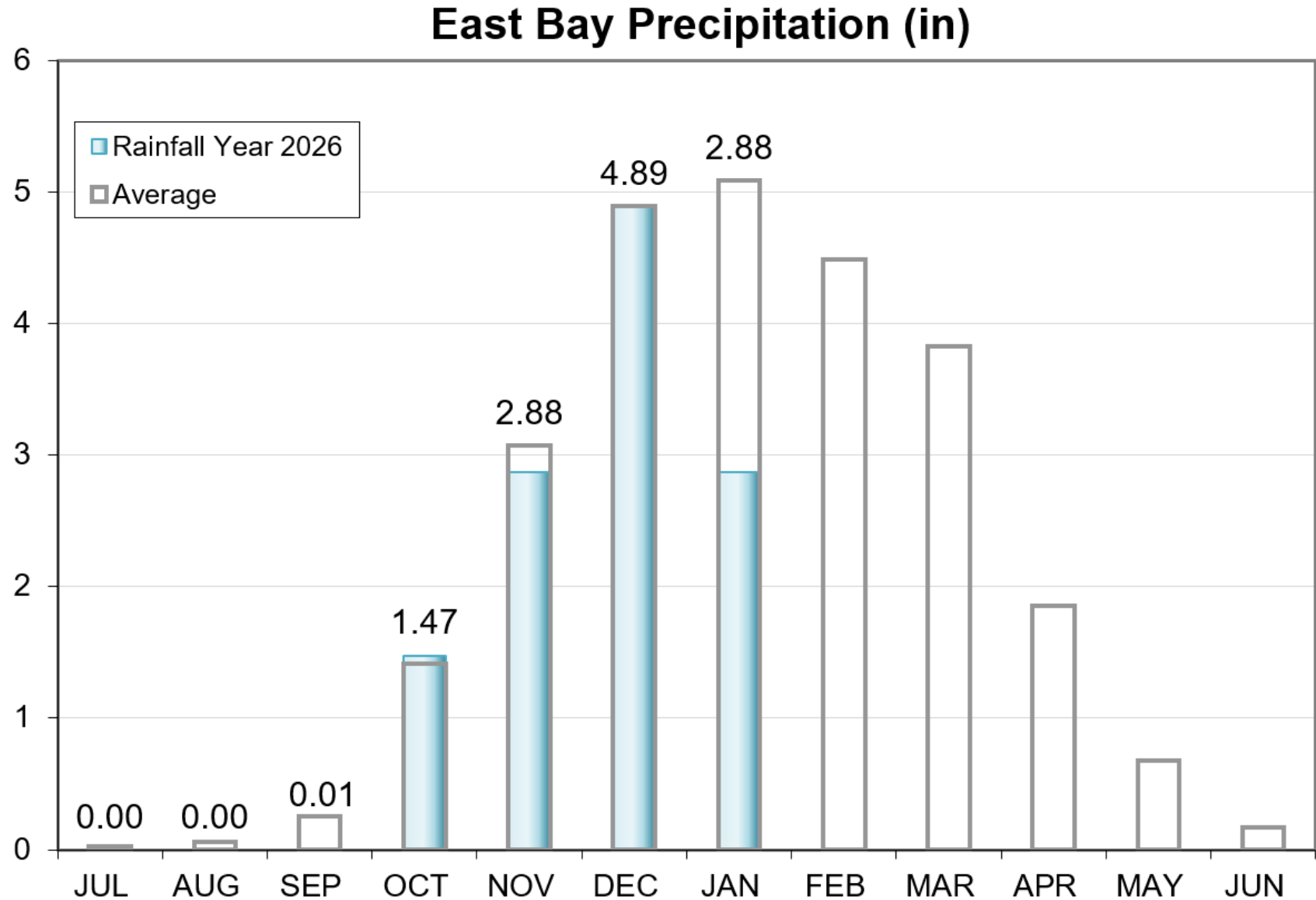
Current Reservoir Storage

As of 1/7/2026	Current Storage	Percent of Average	Percent of Capacity
Pardee	194,840 AF	109%	96%
Camanche	308,940 AF	120%	74%
East Bay	133,380 AF	110%	89%
Total System	637,160 AF	114%	83%

AF: Acre-Feet

Precipitation as of January 7

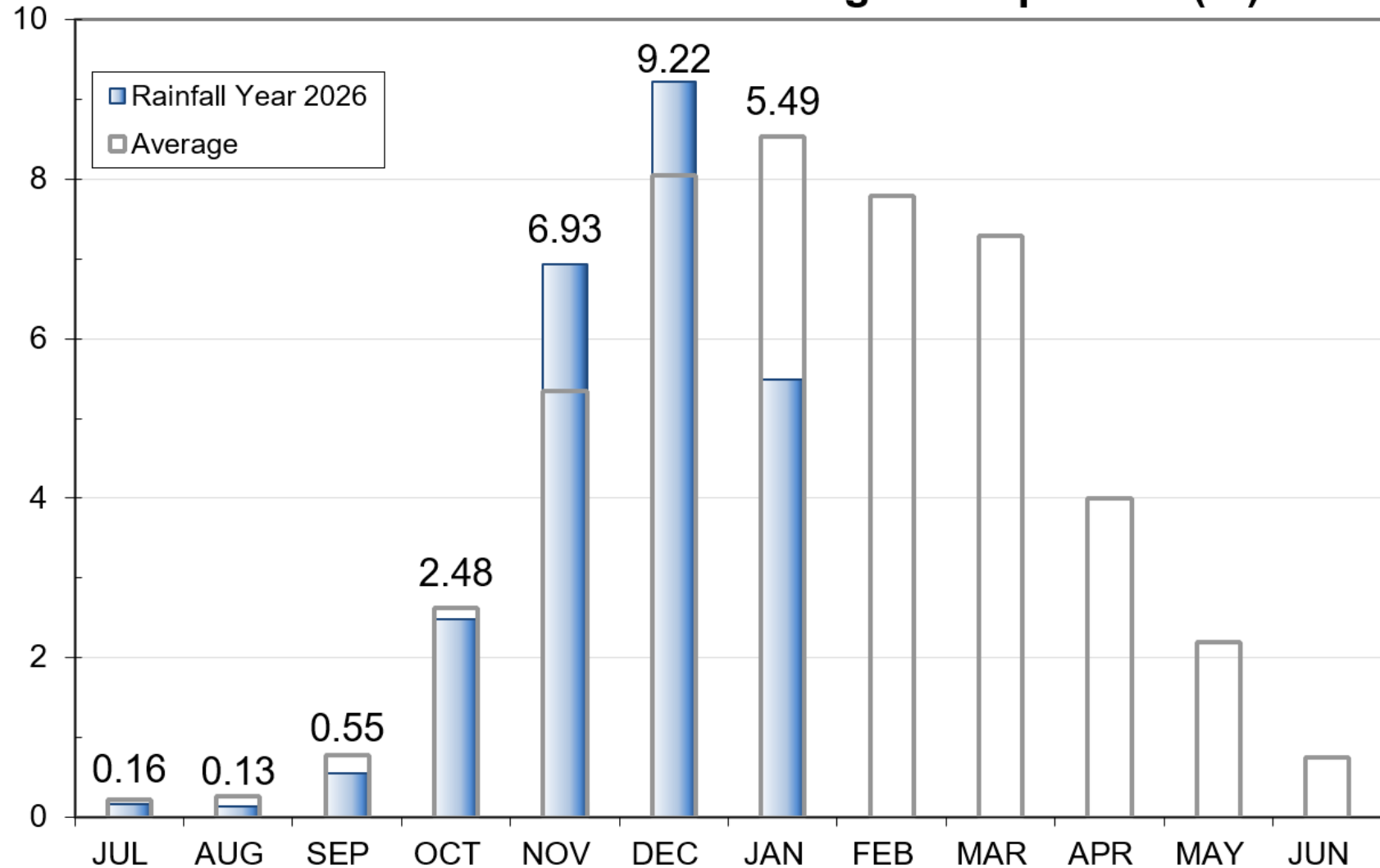
East Bay: 12.12"
(109% of average)



Precipitation as of January 7

Mokelumne: 24.96"
(129% of average)

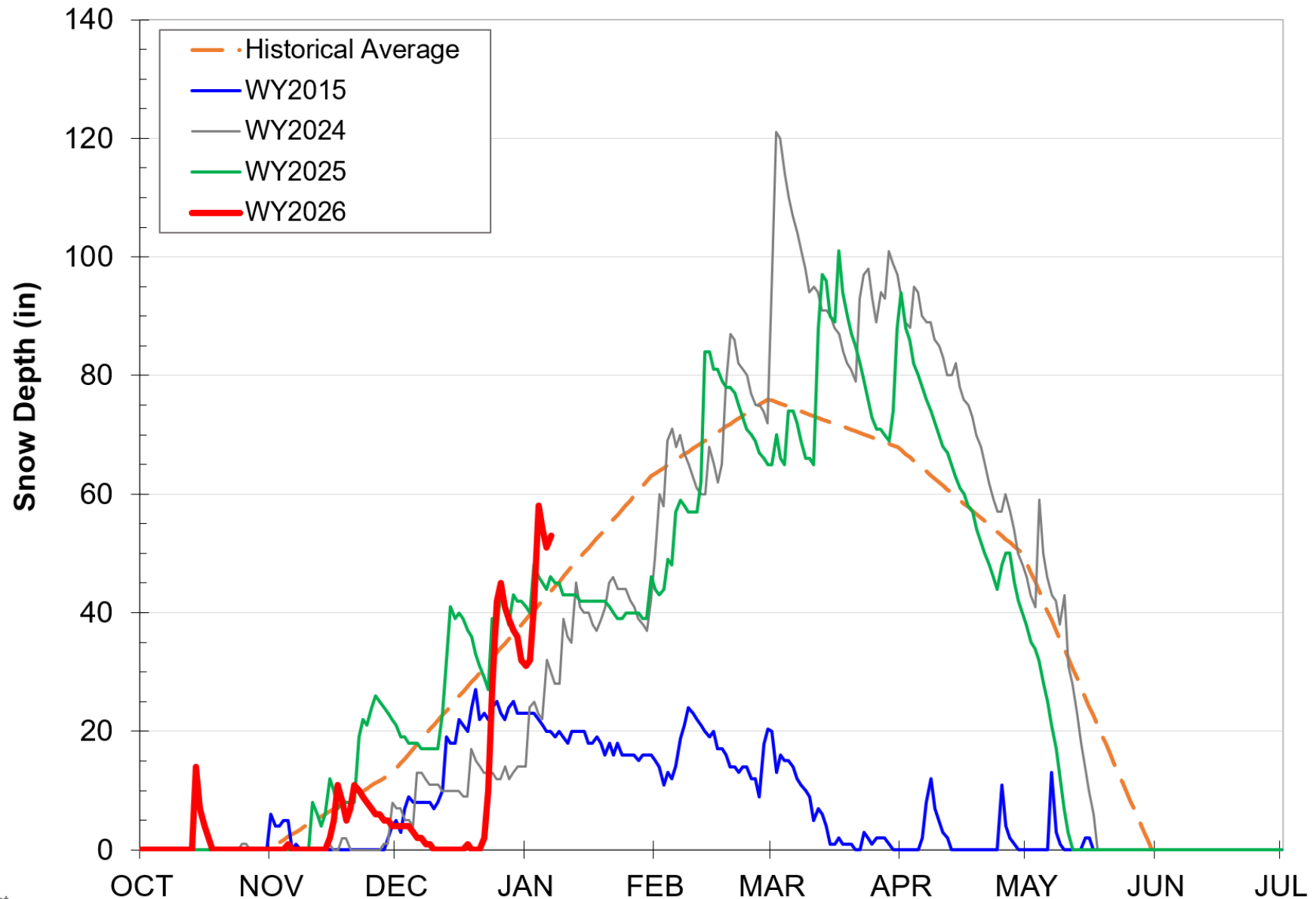
Mokelumne 4-Station Average Precipitation (in)



Caples Lake Snow as of January 7

Snow Depth – 53.0”
(121% of average)

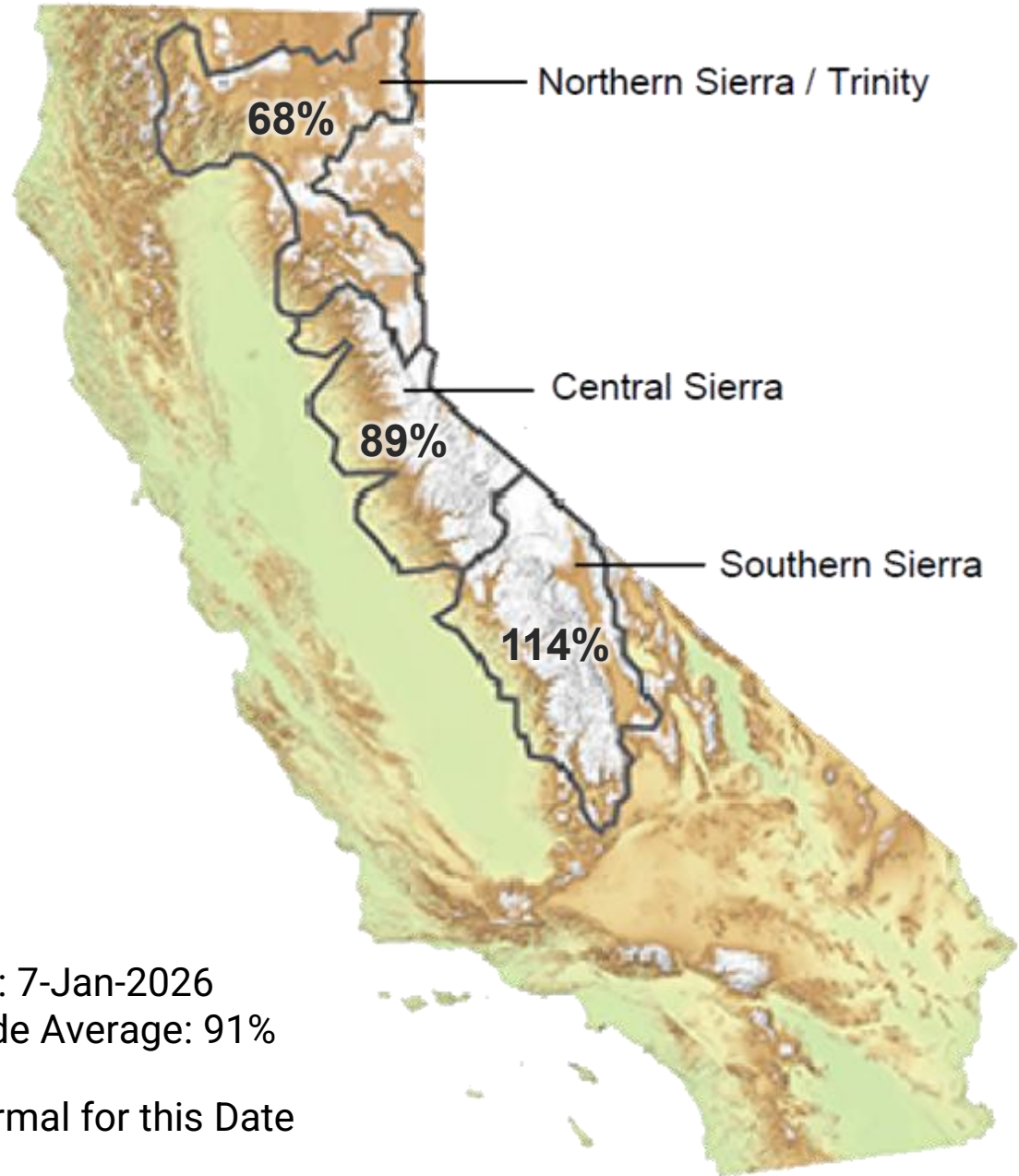
Snow Water
Content – 11.1”
(86% of average)





Snowpack as of January 7

Snow Water Equivalent:
89% of Normal in Central Sierra



Data for: 7-Jan-2026
Statewide Average: 91%

% of Normal for this Date



Seasonal Climate Outlook

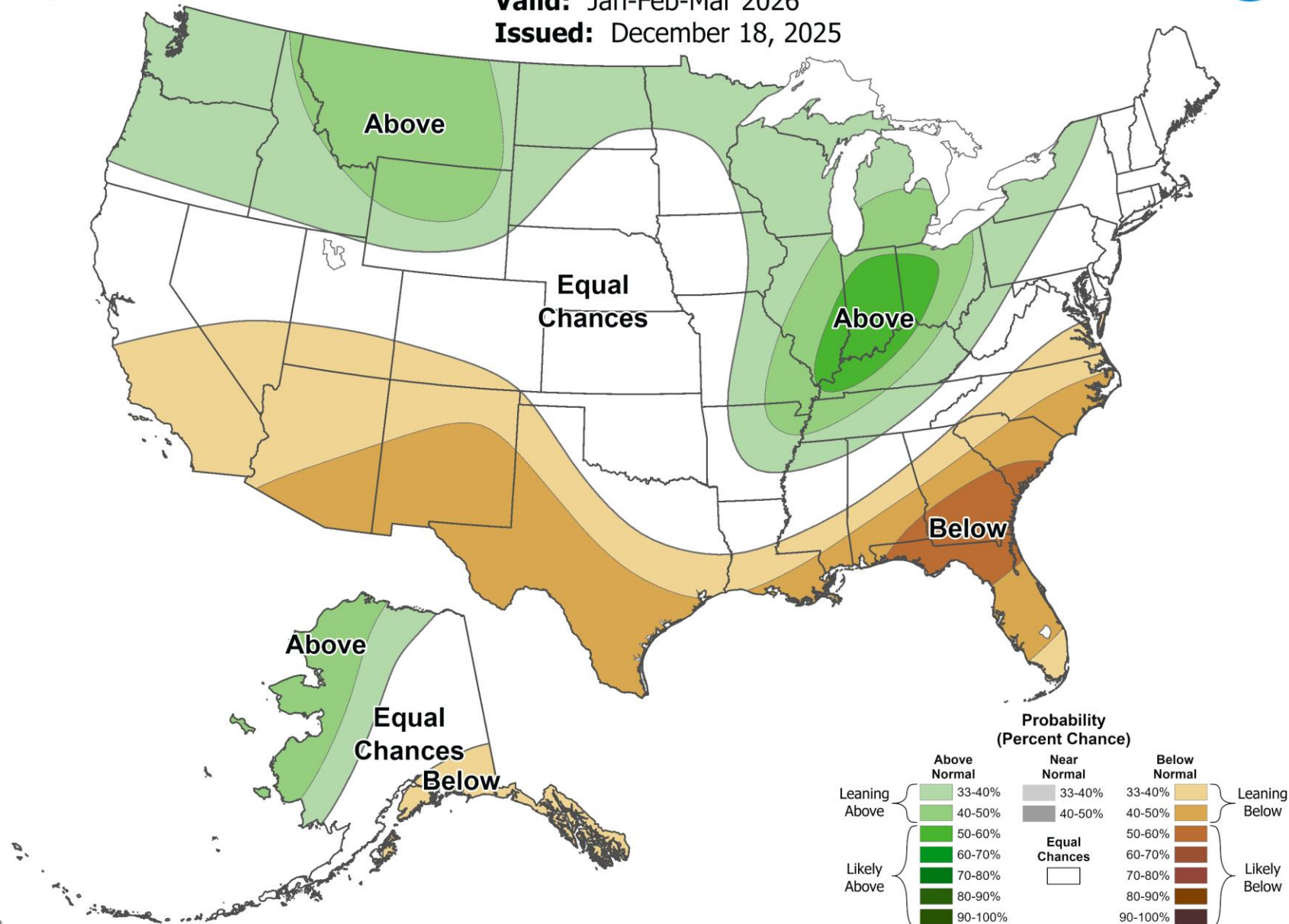
Precipitation Outlook: Jan - Mar



Seasonal Precipitation Outlook

Valid: Jan-Feb-Mar 2026

Issued: December 18, 2025

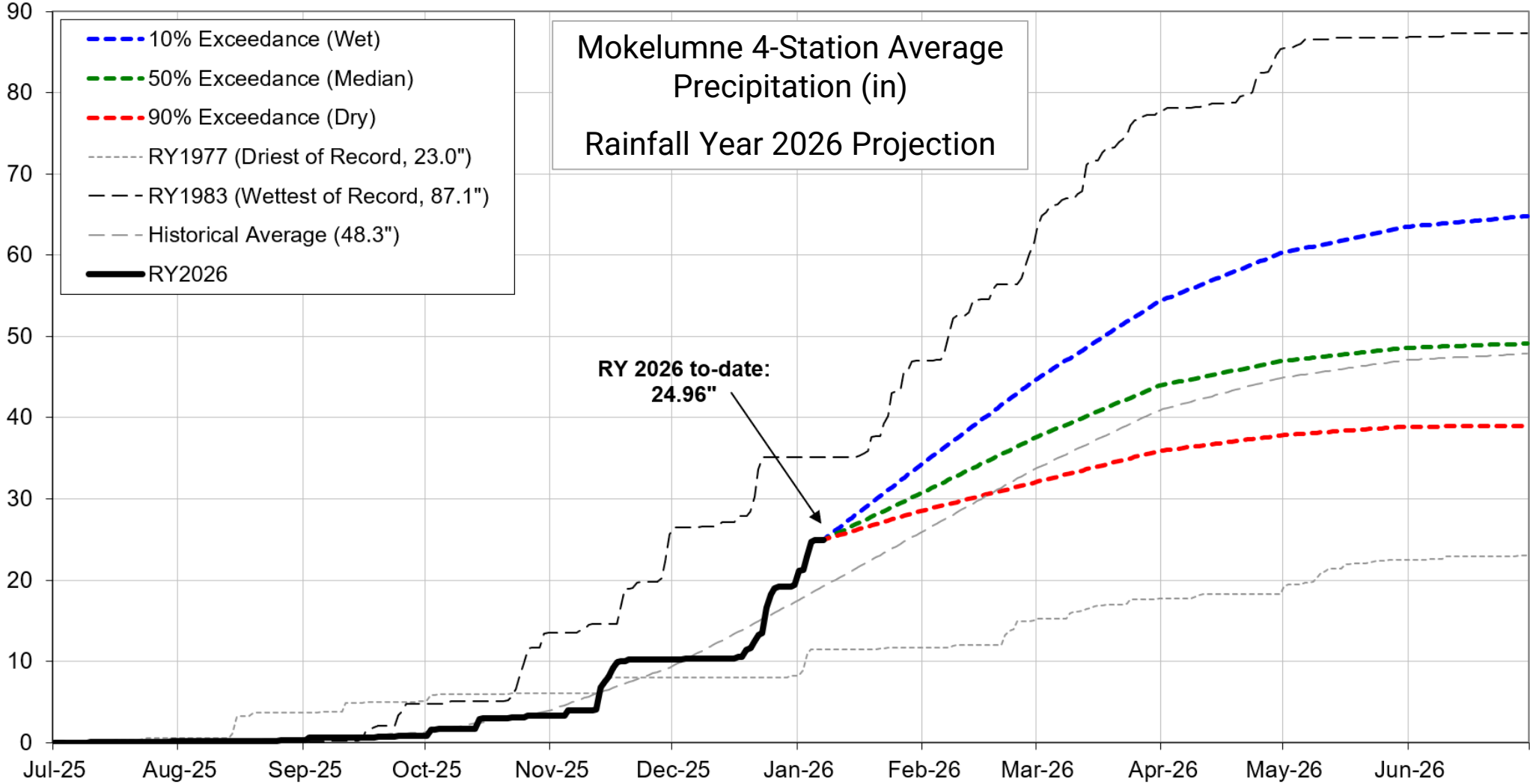


Water Supply Projection

A blue-tinted photograph of a river flowing through a forested area. The river is filled with many rocks, creating white water rapids. The background is a dense forest of trees. The overall scene is serene and natural.

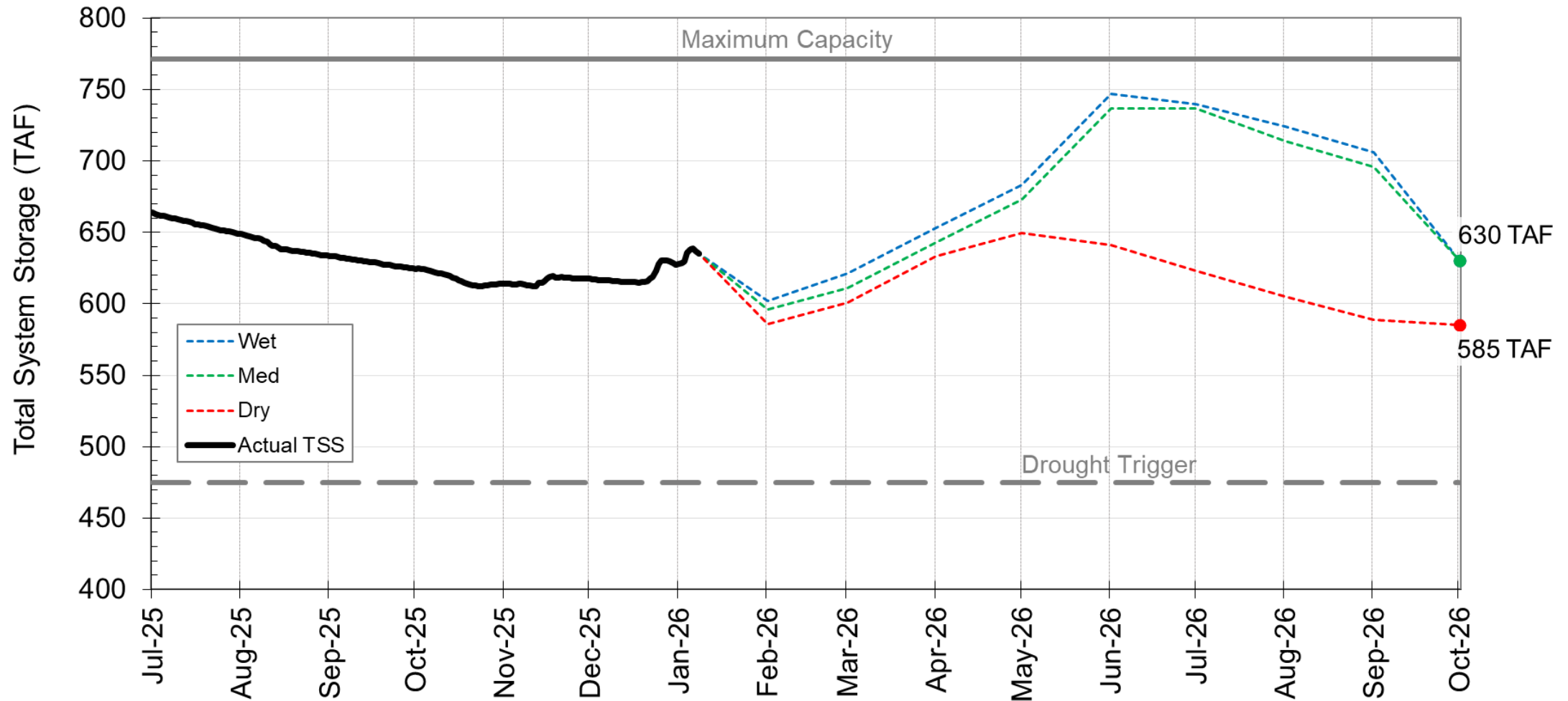
Projected Precipitation

Mokelumne Precipitation Rainfall Year 2026



End of Season Storage

2026 Total System Storage Projections





Questions?

