



# Resilient forests support healthy watersheds



With your next sip of EBMUD water, take a moment to appreciate where it comes from. High in the Sierra Nevada, vast pine forests blanket much of the Mokelumne River watershed. That vibrant landscape captures the snowmelt and rainfall that ultimately flow to our homes, and those mountain woodlands serve as nature's first filters.

Forests play critical roles in safeguarding water quality. They keep our water free of pollutants. They prevent excessive amounts of organic matter and sediment from entering reservoirs and straining water treatment operations. But they also face frequent wildfires, prolonged droughts and widespread tree mortality – challenges that can only be tackled through strong partnerships.

For 25 years, EBMUD has been a proud member of the Upper Mokelumne River Watershed Authority (UMRWA). Together with agencies in Amador, Calaveras and Alpine counties and the U.S. Forest Service, we develop consensus and work to build long-term environmental resilience through collaborative and comprehensive forest management. This includes tree thinning, aspen stand restoration and erosion control projects.

UMRWA has successfully reduced wildfire fuels across 13,000 acres of Calaveras County over the past couple of years and has another 13,000 acres in Amador County in its sights. The work is supported by \$25 million in grants from the Sierra Nevada Conservancy, Cal Fire and the Wildlife Conservation Board.

This year UMRWA also aims to improve the health of 225,000 acres of national forest lands that flank the upper Mokelumne River. This effort will benefit from cooperation among local, regional and federal stakeholders.

Water quality starts at the source. EBMUD's commitment to watershed protection and resilient forests ensures you get the best every time you turn on your tap.

Learn more at [ebmud.com/watersupply](https://ebmud.com/watersupply)

*Strategic tree thinning improves forest health and reduces wildfire risk.*

Photo courtesy of the World Resources Institute.



# A clean bay requires dirty work

On a typical day, 740,000 EBMUD wastewater customers send 50 million gallons of dirty water down their sinks, shower drains and toilets.

Treating all that unpleasant stuff is essential to supporting vibrant communities and a healthy San Francisco Bay. We are proud to roll up our sleeves to make it happen.

A key component of EBMUD's wastewater system is our network of interceptors. These large underground pipes collect the wastewater sent through city sewers and deliver it to our Wastewater Treatment Plant in Oakland. These pipes are now more than 70 years old, and we are investing in sections that need rehabilitation.

EBMUD recently tackled a nearly half-mile long, 25-foot deep segment of our North Interceptor in Emeryville that receives wastewater from Albany Berkeley, El Cerrito and Emeryville. Repairing a 66-inch diameter pipe is hard enough. When that pipe runs beneath a dense urban environment of buildings, roads and highways, the work gets even more challenging.

Our engineers developed a plan to rehabilitate the interceptor from the inside using a flexible liner that we could harden in place. We essentially

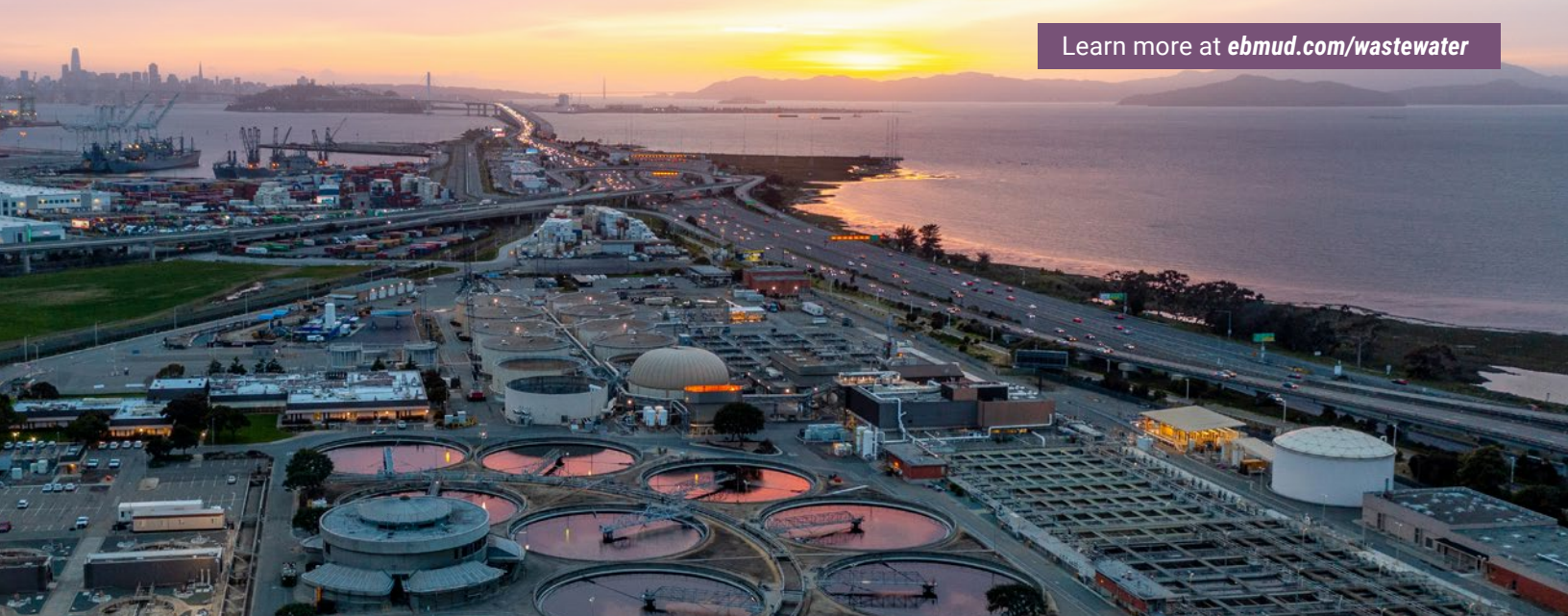


Flexible liners strengthen aging wastewater pipelines.

formed a new, durable pipe within the old one. This method restored the pipeline's structural integrity, extended its lifespan and eliminated leaks while minimizing disruption to the surrounding environment. It also saved time and money by avoiding a labor-intensive removal and replacement of the old, failing pipe.

EBMUD works hard to spend your rate dollars wisely and provide affordable services. Smart investments in essential wastewater infrastructure keep our communities healthy and our bay waters clean.

Learn more at [ebmud.com/wastewater](https://ebmud.com/wastewater)



**BUYING OR SELLING A PROPERTY? COMPLETING A REMODEL IN EXCESS OF \$100,000?** You'll need to ensure the private sewer lateral (PSL) that connects your home or business to your municipal sewer is leak-free. Learn more at [ebmud.com/psl](https://ebmud.com/psl)



P.O. Box 24055 • Oakland, CA 94623  
866-403-2683  
[ebmud.com](https://ebmud.com)

#### EBMUD Mission Statement

To manage the natural resources with which the District is entrusted; to provide reliable, high-quality water and wastewater services at fair and reasonable rates for the people of the East Bay; and to preserve and protect the environment for future generations.

Connect with us:



J-F 2026