



Water Supply Update

Board of Directors

March 11, 2025

Roberto C. Cortez, Manager of Water Operations



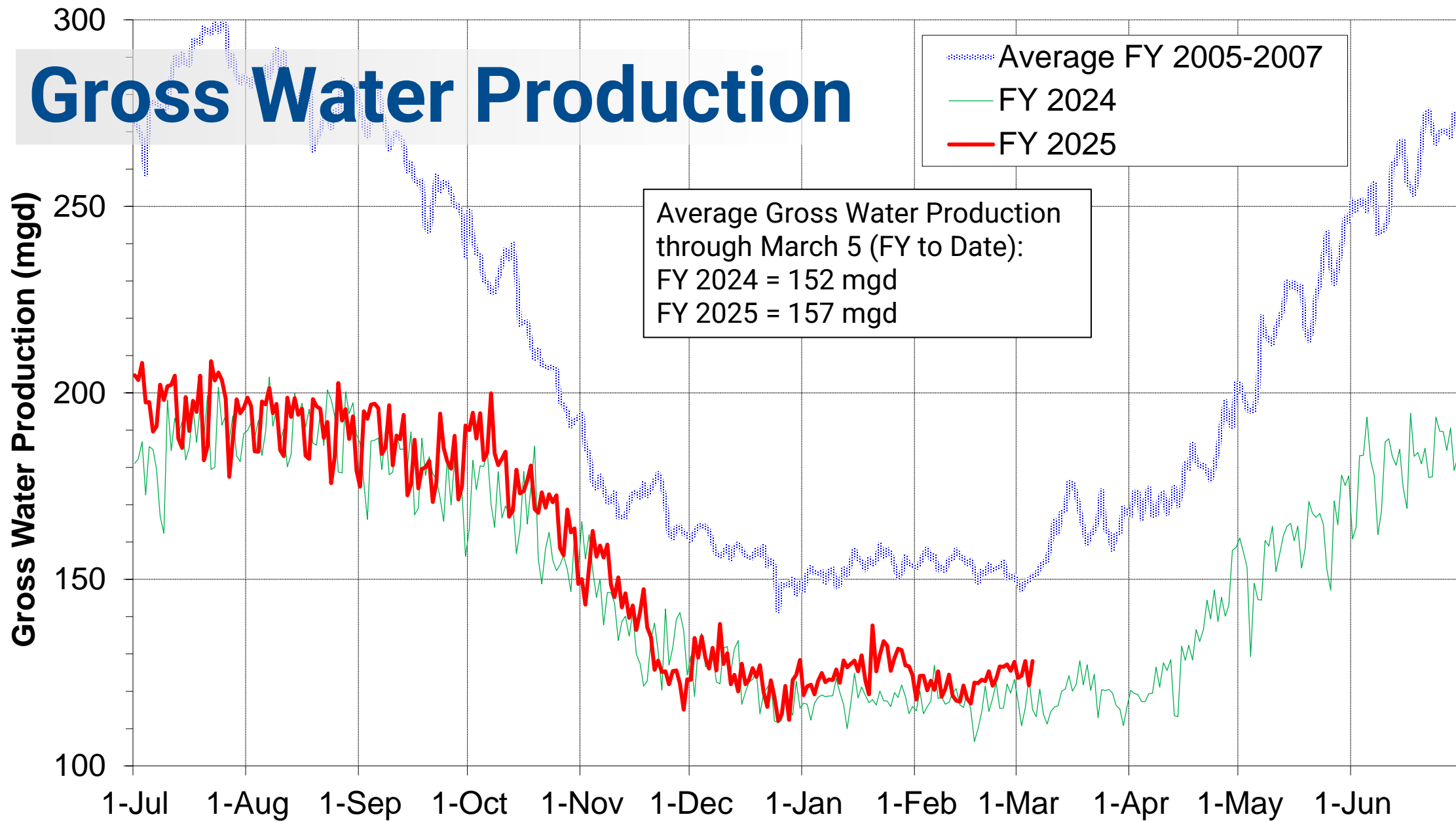
Briefing Topics

- Current Water Supply
- Water Supply Projections

Current Water Supply

A blue-tinted photograph of a river flowing over rocks, with dense trees in the background. The river is in the foreground, with many rocks visible beneath the water. The background is filled with a dense forest of trees and bushes. The overall scene is serene and natural.

Gross Water Production



Reservoir Storage

As of 3/5/2025	Current Storage	Percent of Average	Percent of Capacity
Pardee	173,240 AF	94%	85%
Camanche	320,200 AF	116%	77%
East Bay	135,150 AF	101%	90%
Total System	628,590 AF	106%	81%

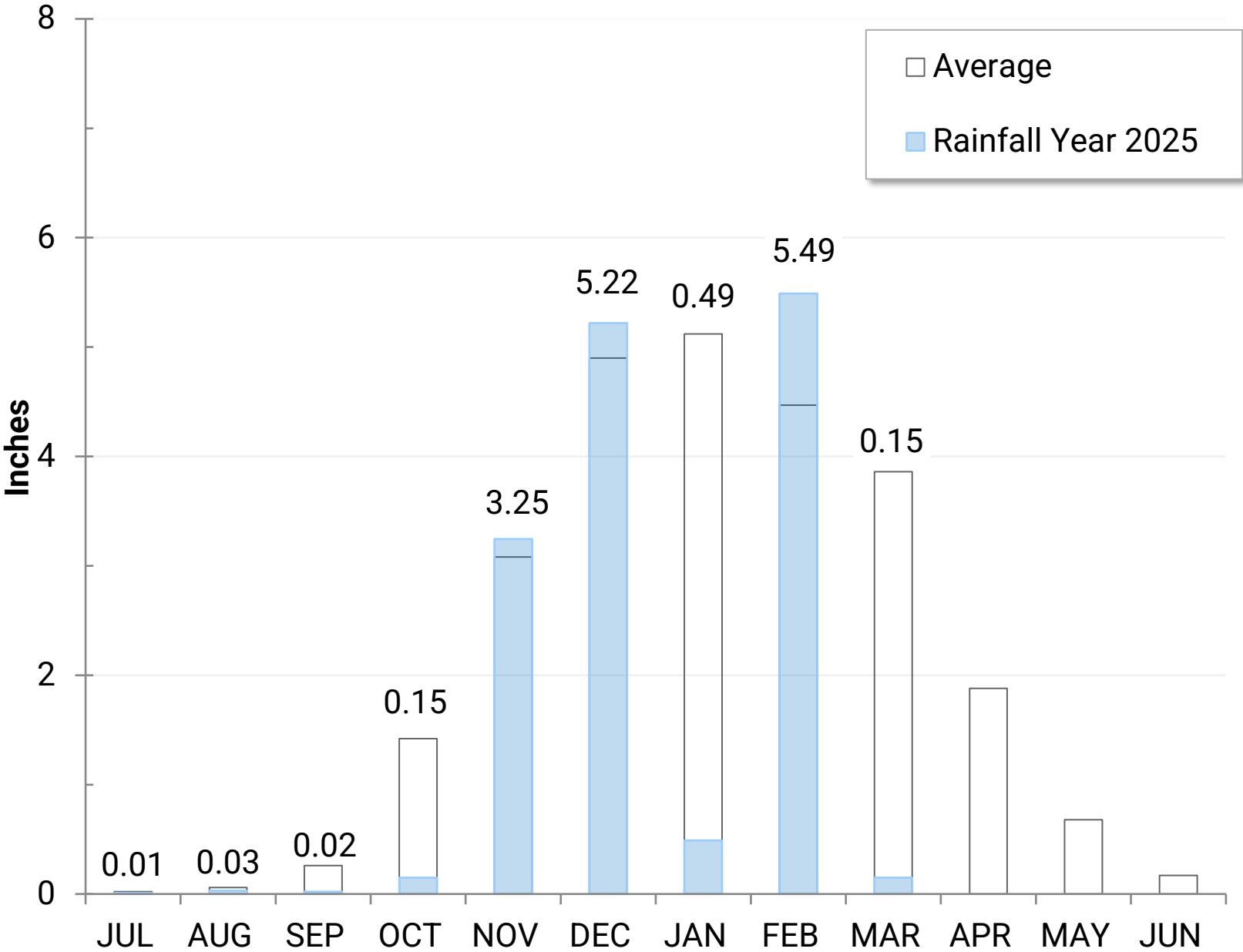
AF: Acre-Feet

Precipitation as of March 5

East Bay: 14.8”
(72% of average)

Weather Station Details

- USL WTP
- Lafayette Reservoir
- Data collected since 1953

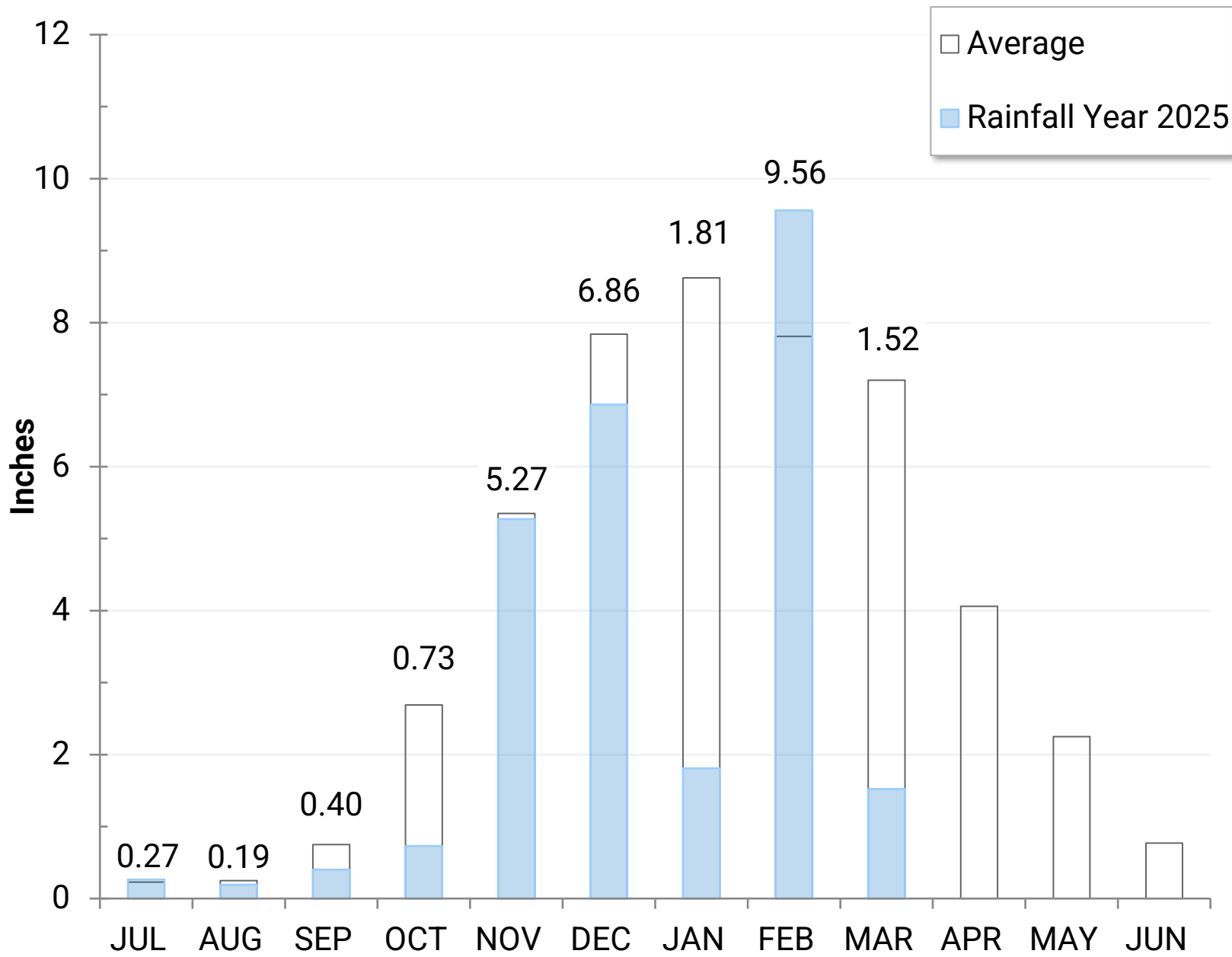


Precipitation as of March 5

Mokelumne: 26.6”
(76% of average)

Weather Station Details

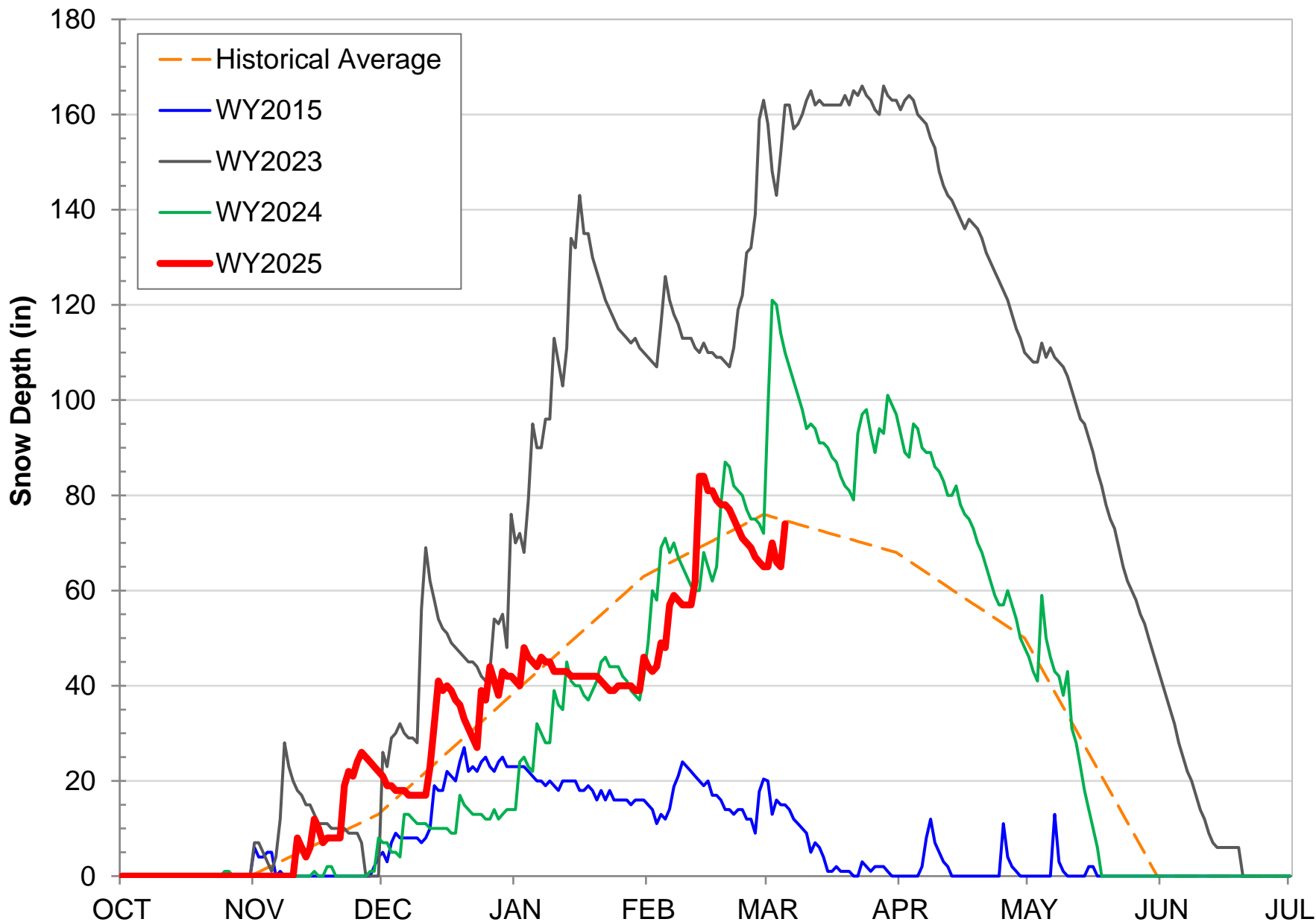
- Calaveras Big Trees
- Caples Lake
- Salt Spring Reservoir
- Tiger Creek Power Station
- Data collected since 1930



Caples Lake Snow as of March 5

Snow Depth – 74”
(99% of average)

Snow Water
Content – 19.6”
(72% of average)





Caples Station, J. Urness 2022

Snowpack as of March 6

Snow Water Equivalent:
77% of Normal in Central Sierra



Data for: 6-March-2025
Statewide Average: 83%

% of Normal for this Date



Water Supply Projections

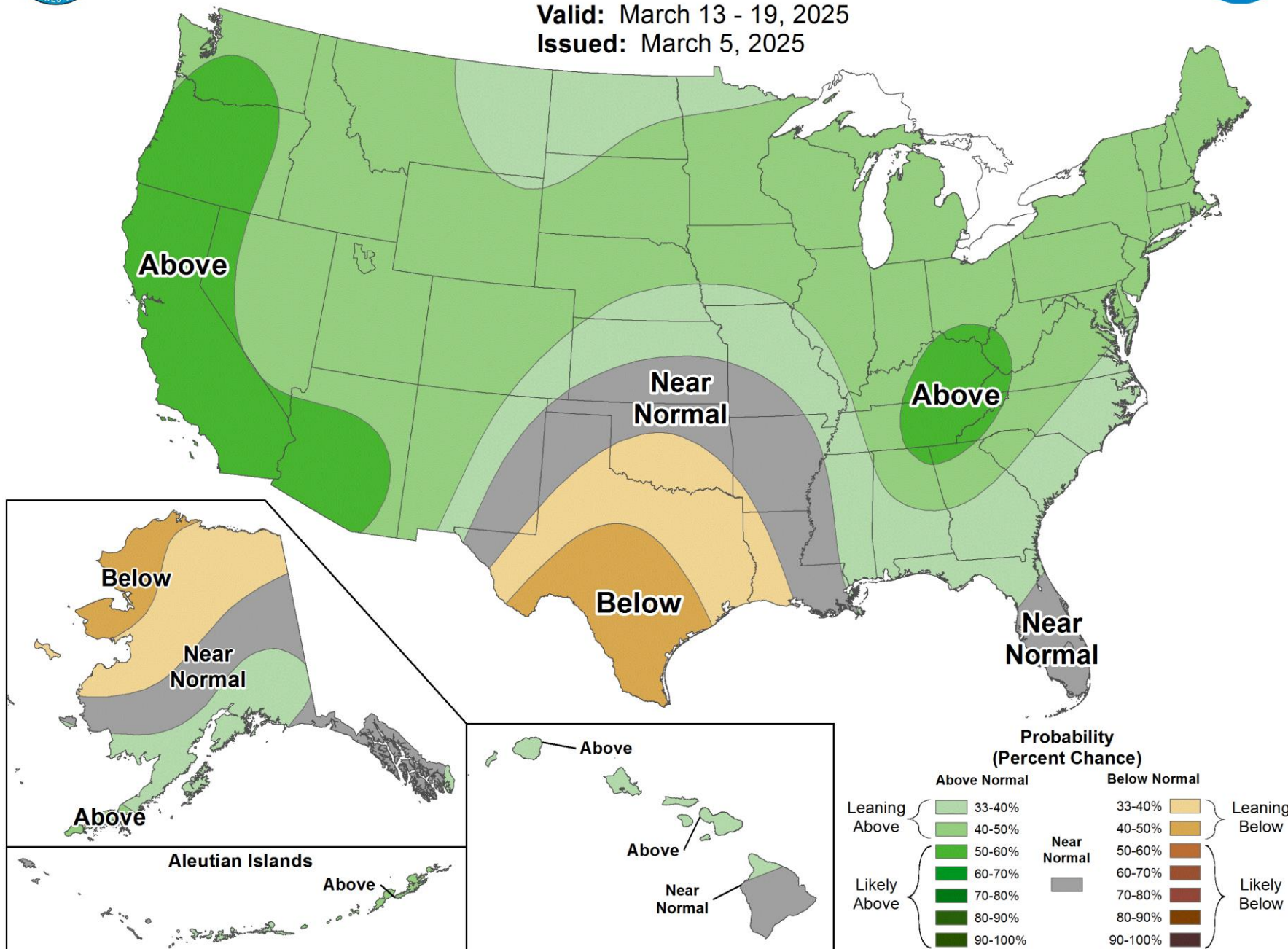


8-14 Day Precipitation Outlook



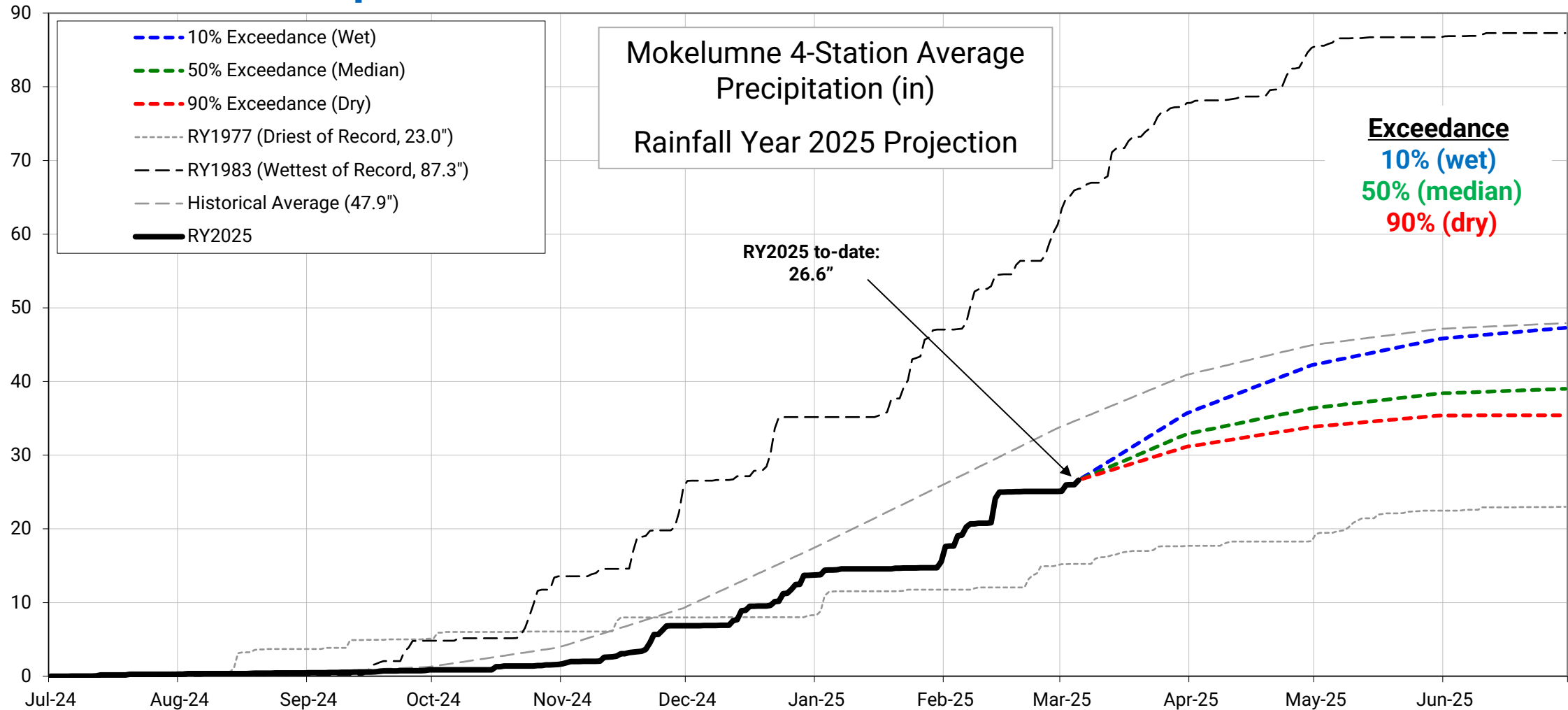
Valid: March 13 - 19, 2025

Issued: March 5, 2025



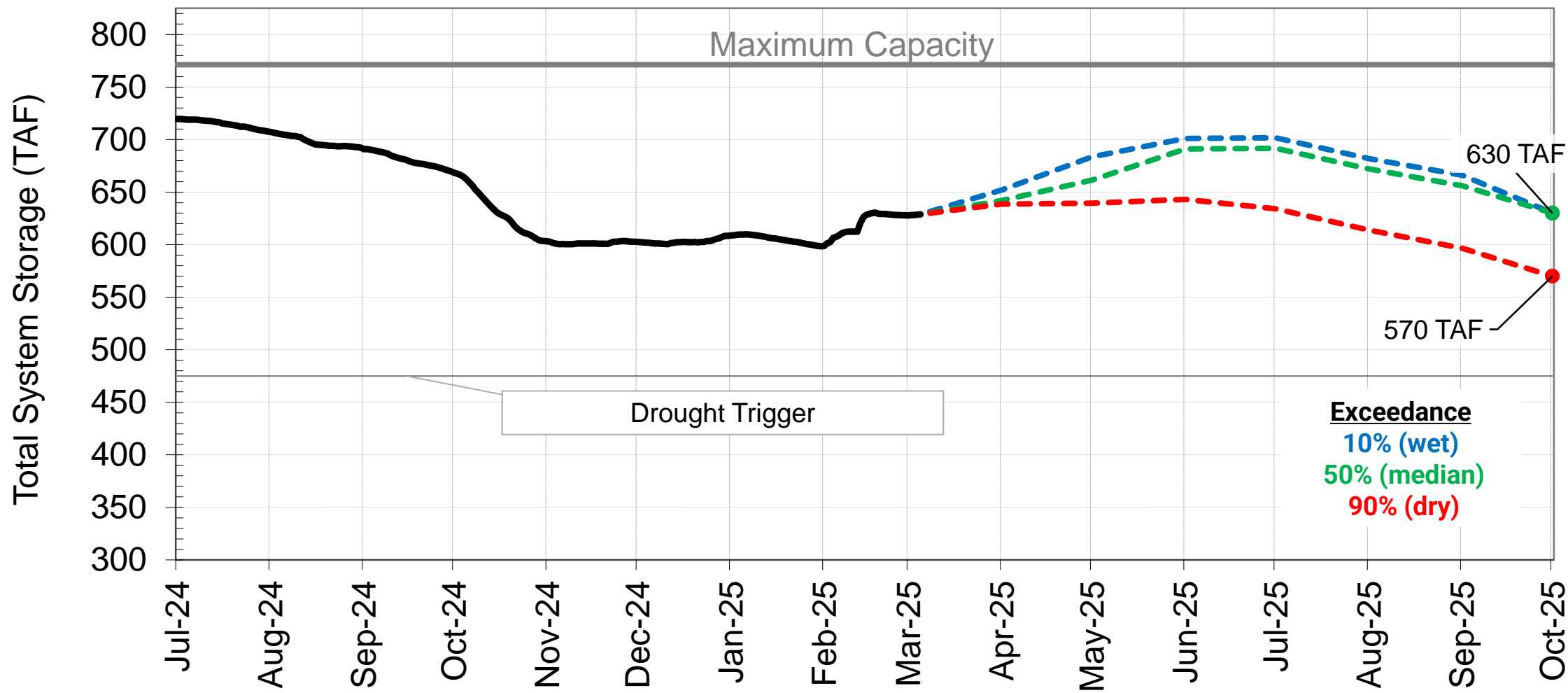
Projected Precipitation

Mokelumne Precipitation Rainfall Year 2025



End of Season Storage

2025 Total System Storage Projections



Questions?

