



Regulatory Compliance Semi-Annual Report

January through June 2024

Planning Committee

September 10, 2024

Agenda

- Environmental Compliance
 - Orinda Water Treatment Plant (WTP) Acute Toxicity Investigation
 - Imposed fines for wastewater operations
- Workplace Safety and Health
- Lost time injury rate (LTIR)
 - COVID-19 pandemic
 - Cal/OSHA worksite inspections

Orinda WTP Acute Toxicity Investigation

- Beginning 2022, multiple failed bioassay tests
- Collaborated with San Francisco Regional Water Quality Control Board on investigation
- Direct sampling of effluent into creek always in compliance
- Source of toxicity found to be associated with the sampling apparatus
- Final investigation report and corrective actions being developed, including new sampling location

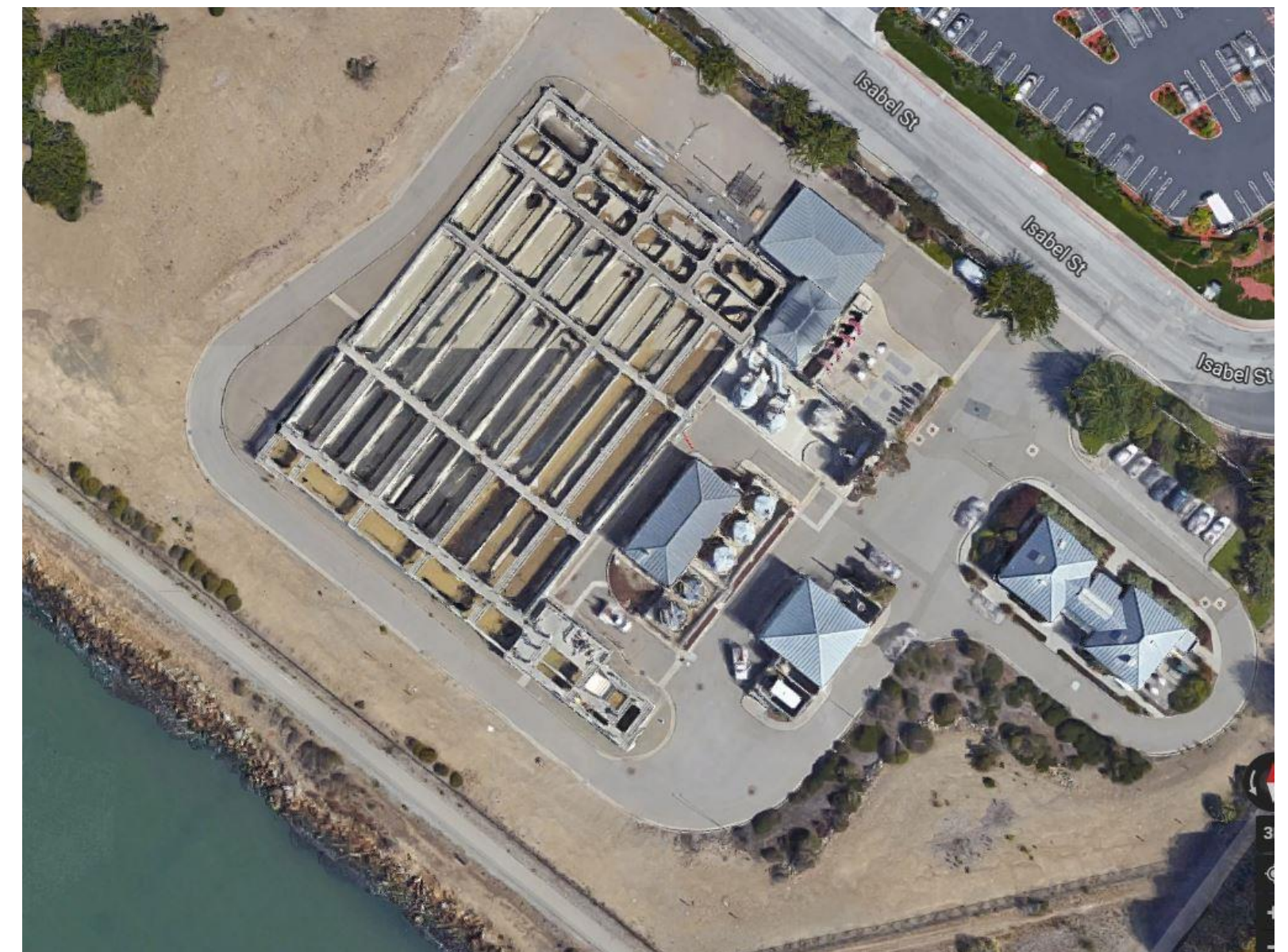
Wastewater Operations – imposed fines associated with collection facilities

- 47,000-gallon Sanitary Sewer Overflow on March 21, 2023
- Caused by power outage at the MWWTP during extreme wind event
- Pumps were offline and wastewater backed up in the interceptors
- Back-up power system improvements made
- \$25,000 penalty assessed April 2024

MWWTP = Main Wastewater Treatment Plant

Wastewater Operations – imposed fines associated with wet weather facilities

- Total Coliform exceedance at Point Isabel Wet Weather Facility on December 27, 2022
- Sample taken too early during first discharge of season which was deemed unrepresentative of entire discharge
- Sampling practices have been updated
- \$3,000 penalty



Aerial view – Point Isabel Wet Weather Facility

Digester Gas Release

- Approximately 47,000 cubic feet of digester gas released from MWWTP in June 2024
- Three-way valve oriented incorrectly isolating wrong pipe during cleaning
- Notice of Violation issued July 2024
- Locked valve covers to be used on out-of-service lines
- Investigating alternative dosing system



Digester tank three-way valve

LTIR

	LTIR
Strategic Plan Key Performance Indicator	≤ 3.0
LTIR as of June 30, 2024	2.25
When work-related COVID, cases are included	2.9

COVID-19 Pandemic

- One Cal/OSHA defined outbreak at District facilities
- Total of 124 cases reported; 7 determined to be work-related
- Isolation time reduced in January from 5 days to 24 hours for those who are positive and symptomatic
- Cal/OSHA COVID-19 regulation remains in place until February 2025

Ca/OSHA Inspections

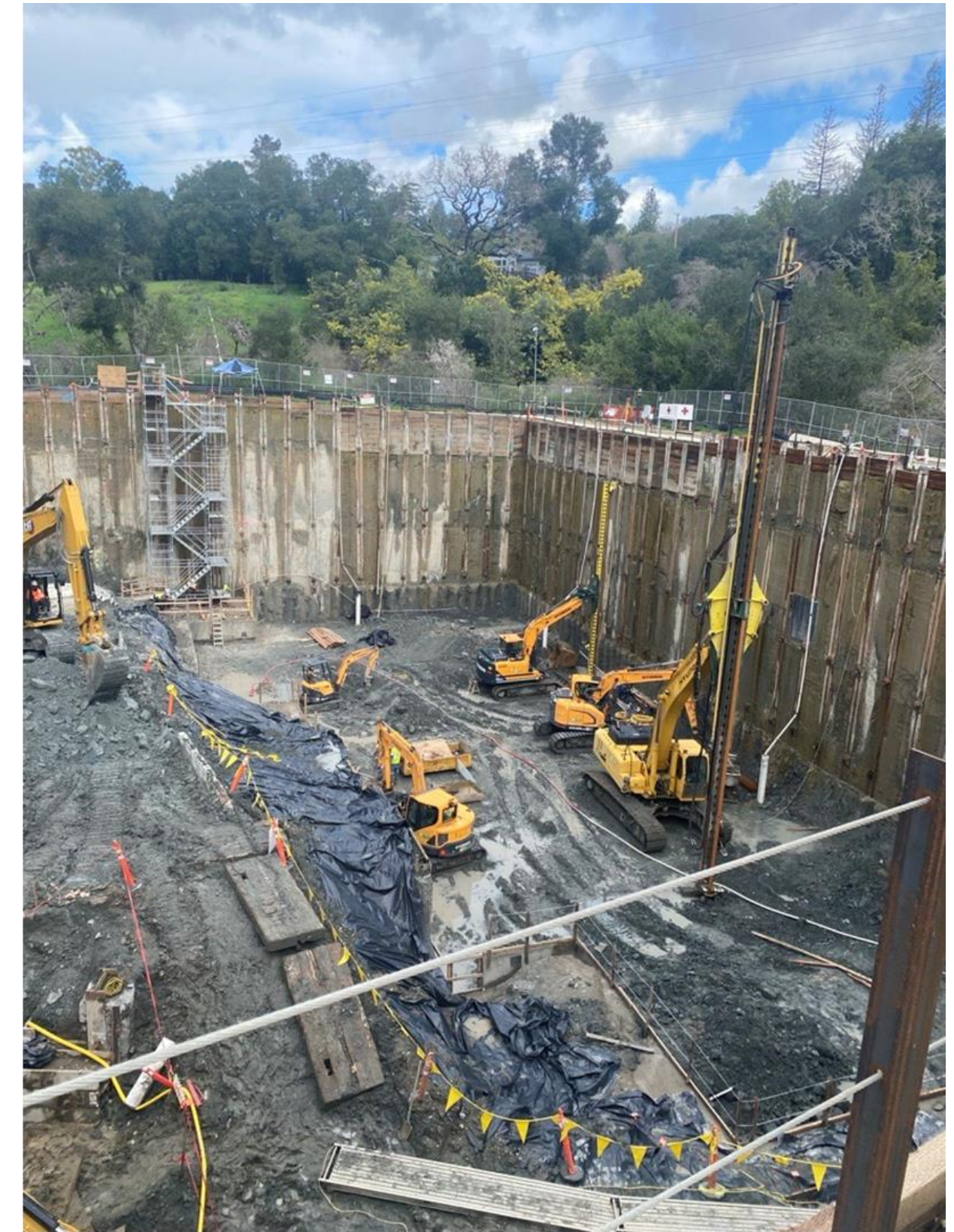
Pipeline replacement jobsite in Albany

- Underground electrical line contacted by backhoe during excavation
- Employee injury – electrical shock
- Notice of No Violation issued by Ca/OSHA
- Working group created to discuss incident and excavation best safety practices

Ca/OSHA Inspections

Orinda Water Treatment Plant Construction Project

- Variance submitted by General Contractor for personnel hoist into large excavation after work stoppage imposed by Cal/OSHA
- Variance denied by Cal/OSHA
- Standard personnel hoist installed
- Work in excavation resumed after 20 days
- Notice of No Violation issued by Cal/OSHA to the District



Orinda WTP Chlorine Contact Basin Excavation

Questions?



**FLOWING
INTO
THE
FUTURE**



Sobrante Water Treatment Plant

Sobrante Water Treatment Plant Reliability Improvements Project

Update and Notice of Availability of Draft EIR
Planning Committee

September 10, 2024

EIR = Environmental Impact Report



Agenda

- Background
- Purpose and Need
- Project Objectives
- Public Outreach
- Draft EIR Analysis
- Next Steps

Purpose and Need

- Critical facility – summer operation, drought operation, and outages
- Continue to treat water supply from San Pablo Reservoir
 - Local runoff
 - Sacramento River (drought operation)

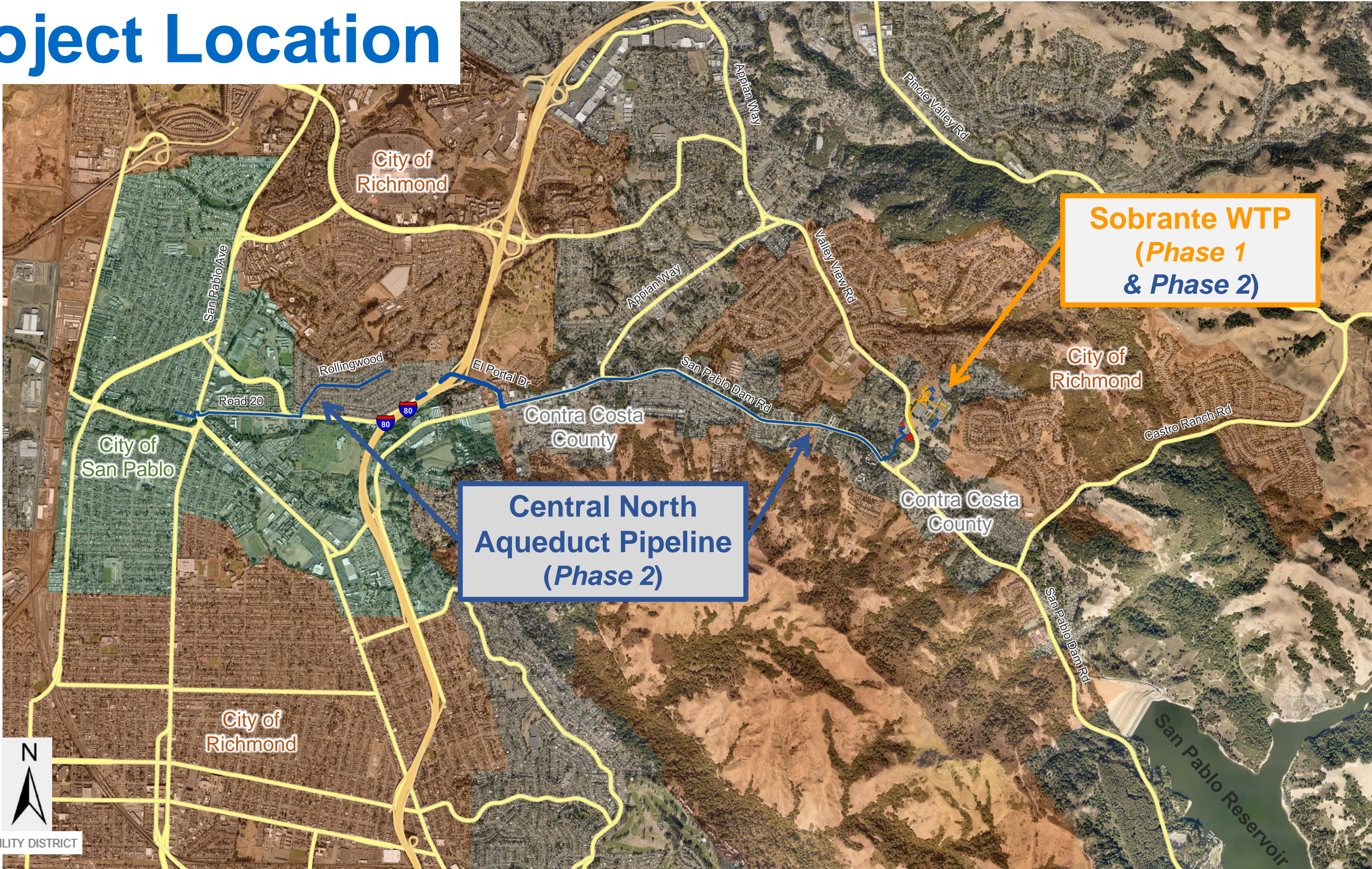


WTP = Water Treatment Plant

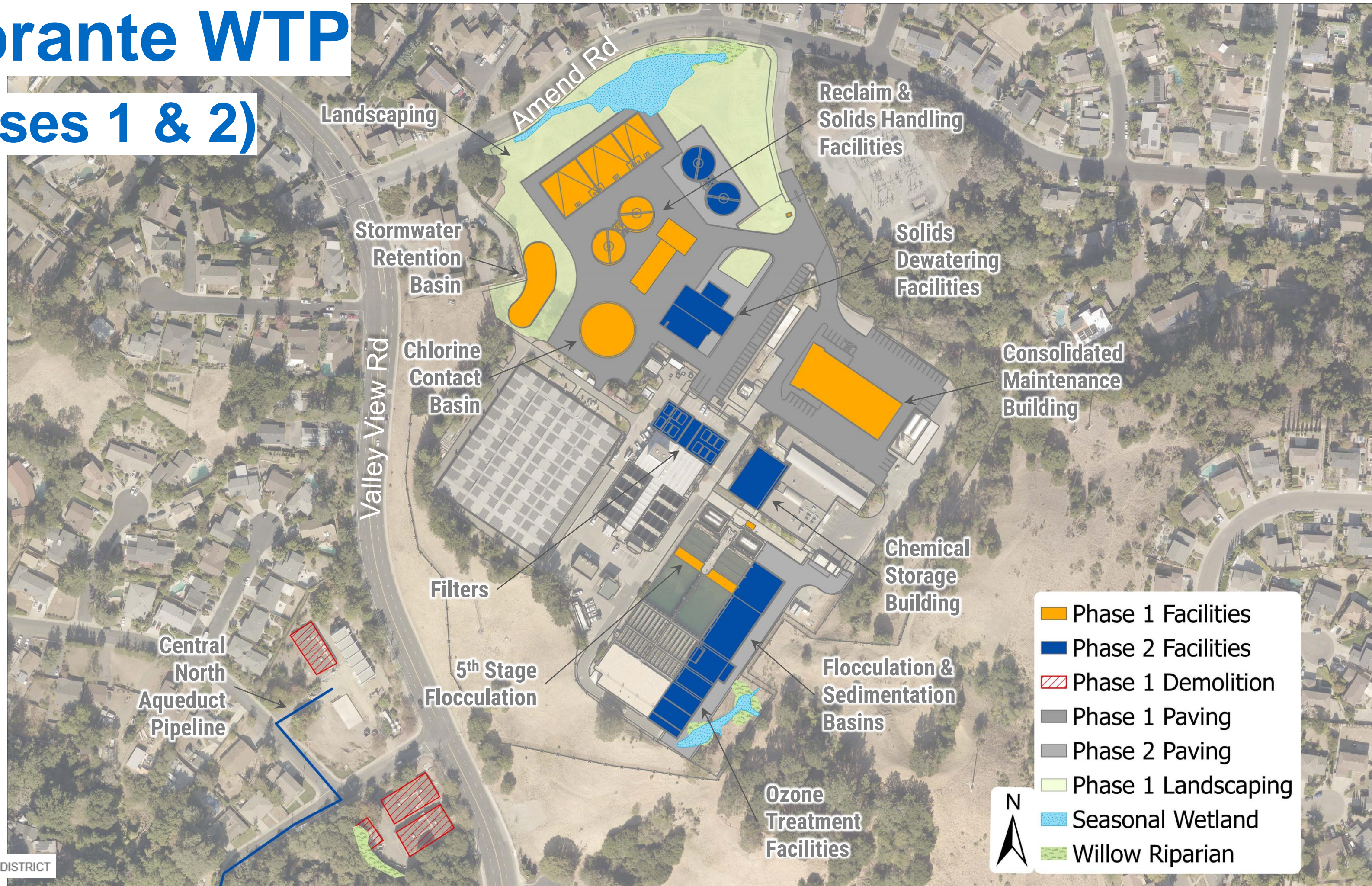
Project Objectives

- Replace aging infrastructure
- Restore reliable treatment capacity to full capacity
- Reduce disinfection byproducts
- Improve efficiency of operations and maintenance
- Maintain flexibility to treat water from supplemental supplies
- Increase treatment capacity as needed to meet future demands

Project Location



Sobrante WTP (Phases 1 & 2)



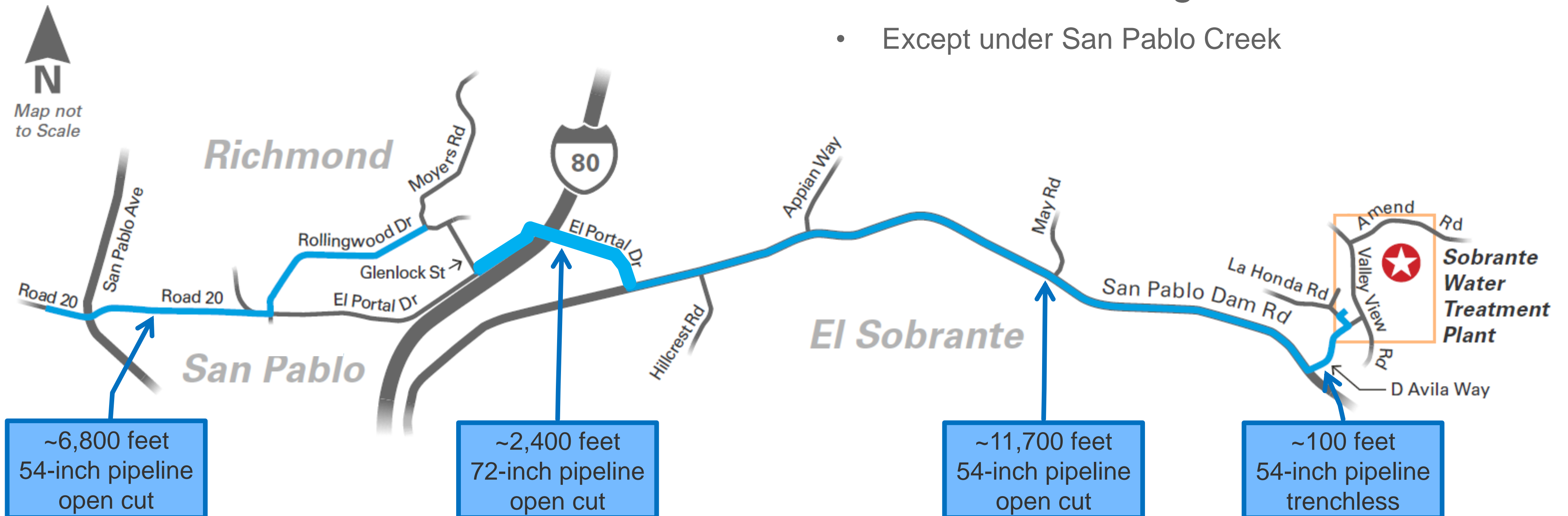
- Phase 1 Facilities
- Phase 2 Facilities
- Phase 1 Demolition
- Phase 1 Paving
- Phase 2 Paving
- Phase 1 Landscaping
- Seasonal Wetland
- Willow Riparian



Central North Aqueduct Pipeline (Phase 2)

Constructed in existing roads

- Except under San Pablo Creek



Public Outreach

- Contra Costa County (July 2021)
- City of Richmond (July 2021)
- City of San Pablo (October 2021)
- Richmond Fire Dept (March 2022)
- General Public (March 2022, October 2022, April 2023)
- County Supervisor John Gioia (October 2022)
- Richmond City Council (June 2023)
- El Sobrante Municipal Advisory Council (August 2023)

Sobrante WTP (Phases 1 & 2)



Draft EIR Analysis Results

Environmental Factors	Less than Significant	Less than Significant with Mitigation	Significant and Unavoidable
Aesthetics		√	
Air Quality	√		
Biological Resources		√	
Cultural Resources		√	
Energy	√		
Geology & Soils		√	
Greenhouse Gas Emissions	√		
Hazards & Hazardous Materials	√		
Hydrology & Water Quality	√		
Land Use and Planning	√		
Noise			√
Transportation		√	
Tribal Cultural Resources		√	
Wildfire	√		

Aesthetic Resources

Mitigation Measure: Landscape Maintenance

Sobrante WTP

- One year after planting, replace any project trees that are damaged, diseased, or fail to grow
- For five years after planting, provide supplemental irrigation



View of new facilities at Sobrante WTP from Amend Road

Biological Resources

Mitigation Measures: Willow Riparian and Seasonal Wetland Habitat Protection & Restoration

Sobrante WTP

- Avoid areas of willow riparian and seasonal wetland habitats, where feasible
- If unavoidable, then restore any impacted areas
- Permanently impacted areas shall be compensated through enhancement or creation of habit at onsite or offsite locations



Phases 1 and 2 Improvements at Sobrante WTP

Biological Resources

Mitigation Measure: California Red-Legged Frog and Western Pond Turtle

Central North Aqueduct pipeline (at San Pablo Creek)

- Install temporary exclusion fences



Cultural, Tribal Cultural, & Paleontological

Mitigation Measures: Archaeological, Tribal, and Paleontological Monitoring

Sobrante WTP and Central North Aqueduct pipeline

- In vicinity of previously recorded archaeological site
 - Archaeological and tribal monitor to be present two days per week
- Project excavations in Orinda Formation
 - Retain a professional paleontologist

Transportation

Mitigation Measures: Heavy Truck Traffic, AC Transit, Bicycle Safety, Pedestrian Access

Sobrante WTP

- Heavy truck traffic limited from 9:00 a.m. to 4:00 p.m.
- At schools on Valley View Rd and Camino Pablo, heavy truck traffic limited from 9:00 a.m. to 3:00 p.m.

Central North Aqueduct Pipeline

- At schools on Road 20, heavy truck traffic limited from 9:00 a.m. to 3:00 p.m.
- Temporary closure of bus stops and rerouting of bus lines will be coordinated with AC Transit
- As feasible avoid designated bikeways, else post detour signs.
- As feasible maintain one crosswalk at signalized intersections.



Haul Truck Example



Alameda-Contra Costa Transit Bus

Noise

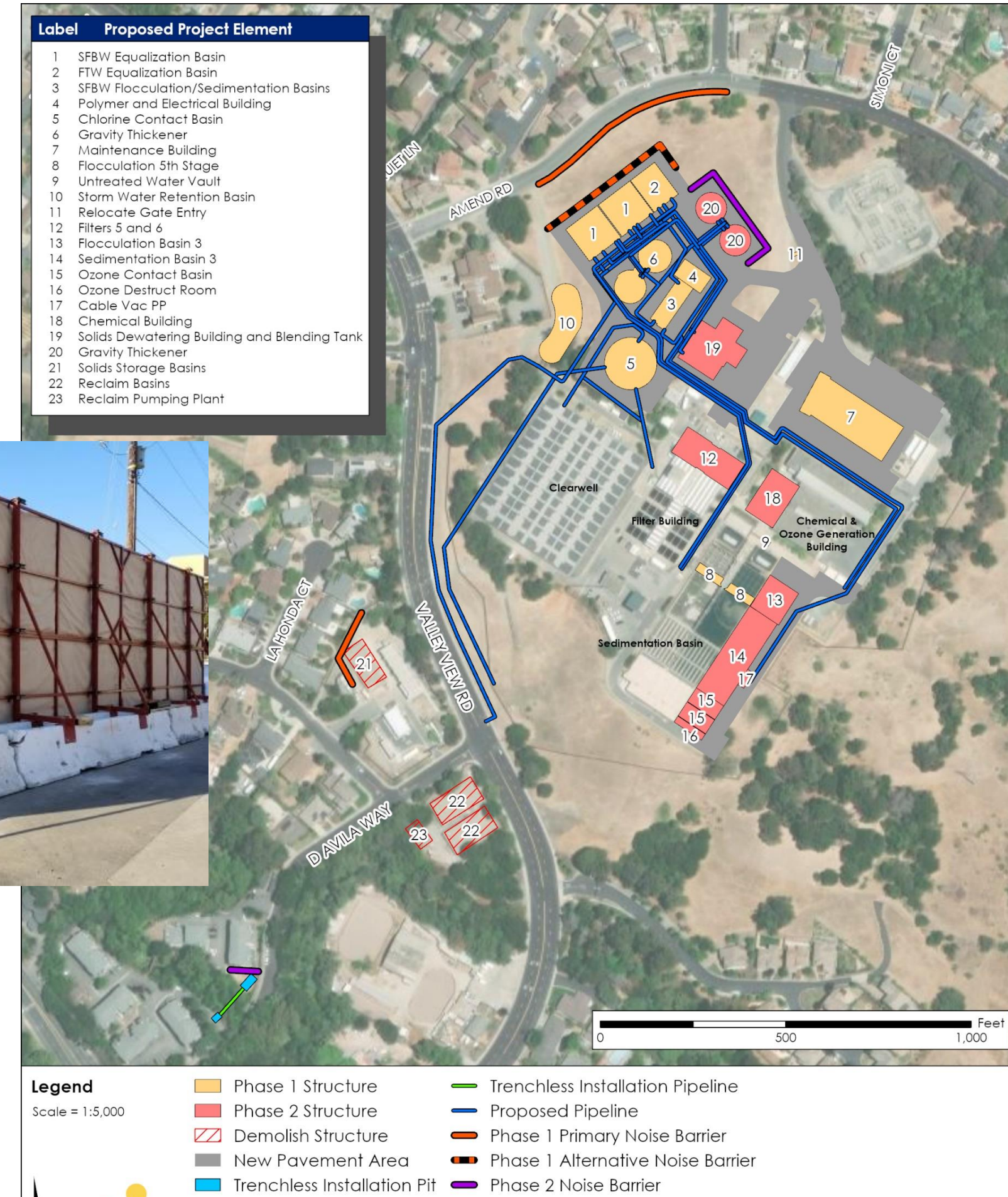
Mitigation Measures: Sound Barriers

Sobrante WTP and Central North Aqueduct pipeline (at San Pablo Creek)

- Install temporary sound barriers
 - Amend Road, 16-ft tall
 - Demolition area, 12-ft tall
 - Gravity thickeners, 12-ft tall
 - Trenchless pipeline, 12-ft tall



Sound Wall Example



Noise

Mitigation Measures: Limit Hours and Off-Site Lodging

Central North Aqueduct pipeline

- In Contra Costa County, limit hours for excavation and grading activities from 7:30 a.m. to 5:30 p.m., where feasible
- Offer off-site lodging during nighttime construction (10:00 p.m. to 7:00 a.m.) at intersections & tie-ins
 - When required by encroachment permit or when limiting construction to daytime is infeasible
 - Offer off-site lodging to residences



Noise: Significant and Unavoidable

Sobrante WTP

- Pile driving of I-beams for SFBW basins is anticipated to exceed noise limits
 - Phase 1: for 20 days
- Concrete pouring prior to 7:00 a.m.
 - Phase 1: for 36 days and Phase 2 for 33 days
 - To complete concrete pours in a single day



I-Beam Installation



Concrete Pour

Noise: Significant and Unavoidable

Central North Aqueduct pipeline

- Construction at San Pablo Creek is anticipated to exceed noise limits for 42 days
- Construction in roadways is anticipated to exceed noise limits for 5 days at each location
- Nighttime construction at intersections and tie-ins for 5 to 10 days at each location



Next Steps

Publication of Draft EIR	September 12, 2024
Public review period	September 12 to October 28, 2024
Public meeting for Draft EIR	October 10, 2024
Board Certification of Final EIR	July 2025
Design of Phase 1	2027 to 2030
Construction of Phase 1	2030 to 2034
Design of Phase 2	TBD – Depends on Future Water Demands
Construction of Phase 2	TBD – Depends on Future Water Demands

Questions?



**FLOWING
INTO
THE
FUTURE**



Upper Mokelumne River Watershed Authority Update

Planning Committee

September 10, 2024

Agenda

- UMRWA Background
- Forest Health Program
- Advance and Reimbursement Agreement
- Blue Forest
- UMRWA Fee Proposal
- Recommendations and Next Steps



Upper Mokelumne River watershed, October 2023

UMRWA: Upper Mokelumne River Watershed Authority

Upper Mokelumne River Watershed Authority

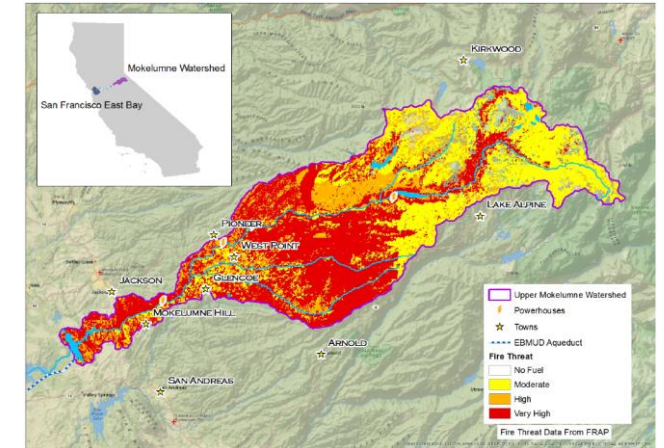
- Joint Powers Authority established in 2000
 - EBMUD serves as Treasurer, Controller, and Secretary
 - Amador County serves as Attorney
- Engaged in stewardship of regional water and forest resources
- Past activities:
 - Mokelumne-Amador-Calaveras (MAC) Plan, a State-approved Integrated Regional Water Management Plan
 - MokeWISE Plan with East San Joaquin region

9 Member Agencies

Amador Water Agency
Calaveras County Water District
Calaveras Public Utility District
East Bay Municipal Utility District
Jackson Valley Irrigation District
Alpine County Water Agency
Amador County
Calaveras County
Alpine County

Forest Health and Resilience Project

- UMRWA signed Master Stewardship Agreement with US Forest Service in 2016
- Phase 1: 26,000 acres
 - Plan to complete by 2031
- Phase 2: 225,000 acres
 - Working on planning, environmental documentation
- Over \$16 million in State grant funding
 - Disbursements can take 90 days or longer
 - UMRWA seeking bridge funding from Blue Forest and EBMUD



Modeled fire threat, Upper Mokelumne watershed.



Forest restoration in progress.

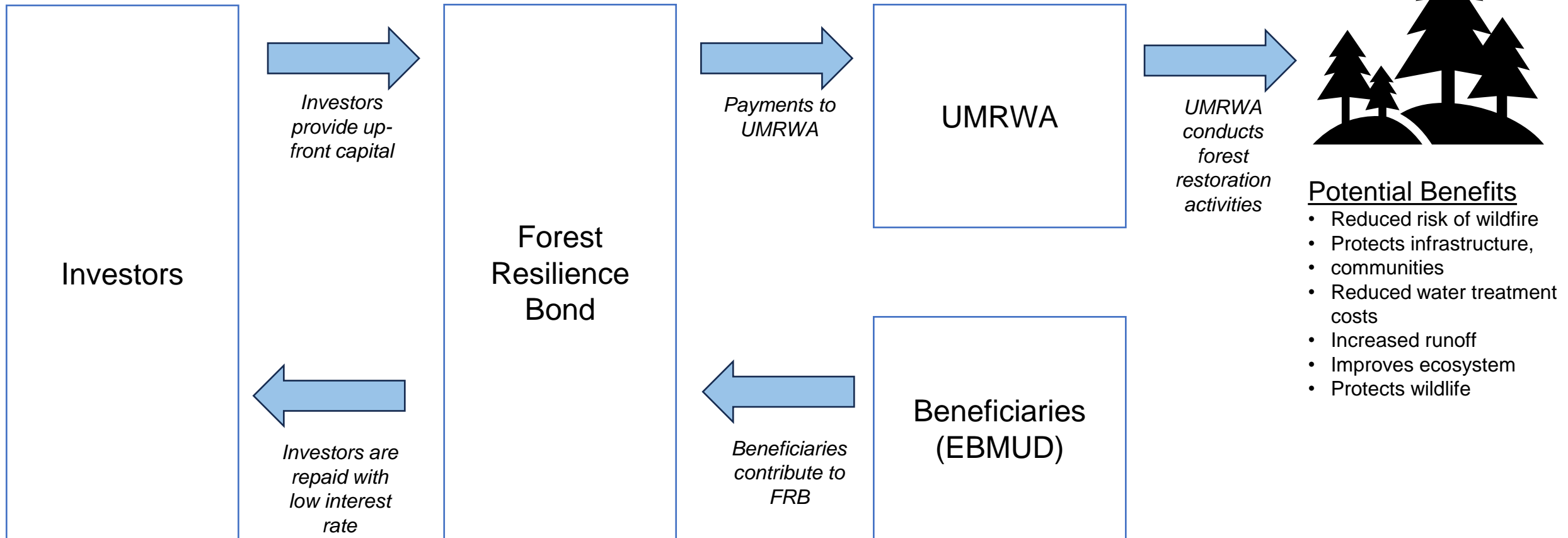
Blue Forest

- Nonprofit conservation finance organization founded in 2015
- Finances forest health projects via “Forest Resilience Bond”
- Agreement with UMRWA for bridge financing
 - \$4 million interest free line of credit
- Discussions with EBMUD, other agencies regarding Mokelumne Forest Resilience Bond (FRB)
- Have partnered with Yuba Water Agency, Chelan Public Utility District (Washington)



UMRWA forest restoration site, Pioneer, California, 2023

Forest Resilience Bond (FRB)



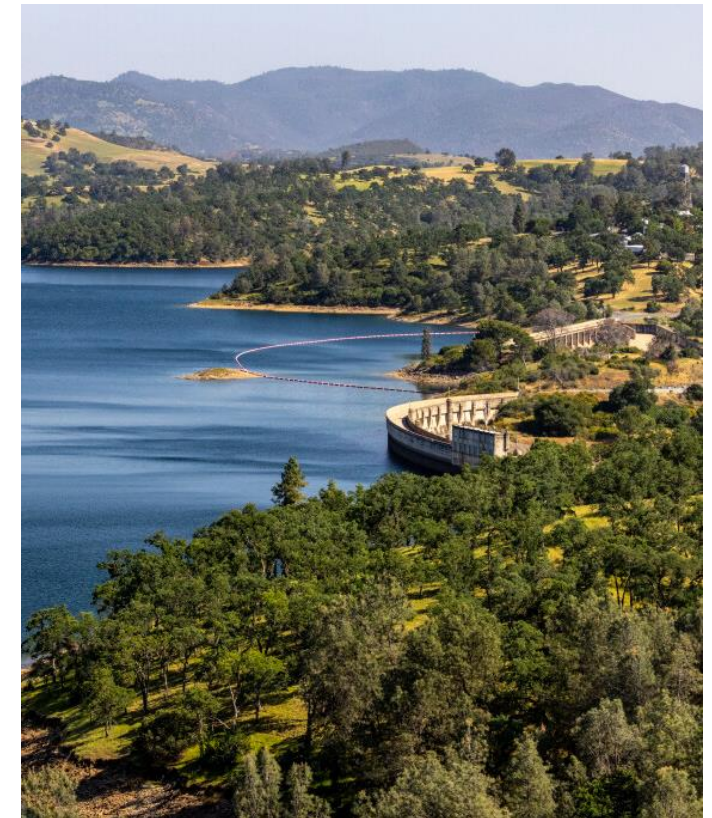
EBMUD FRB Scenarios

	Scenario 1: Pilot	Scenario 2: Mid-scale	Scenario 3: Landscape Scale
EBMUD Contribution	\$400,000/year for 5 years (\$2 million total)	\$1.2 million/year for 5 years (\$6 million total)	\$2 million/year for 5 years (\$10 million total)
Percent of Total Phase 1 Cost (Estimated \$64 million)	3%	9%	16%
Acres Restored	820 acres	2460 acres	4,100 acres

EBMUD Advance & Reimbursement Agreement

- \$3,000,000 proposed not-to-exceed outstanding amount
- Advances made by EBMUD on an as needed basis
- Interest charged based on applicable LAIF rate
- Reimbursements and interest charges paid by UMRWA when disbursements of grant funds are received
- As with current practice, UMRWA members (including EBMUD) responsible for repayment if grant funds are insufficient
- Eligible grants are listed in the Agreement and may be amended

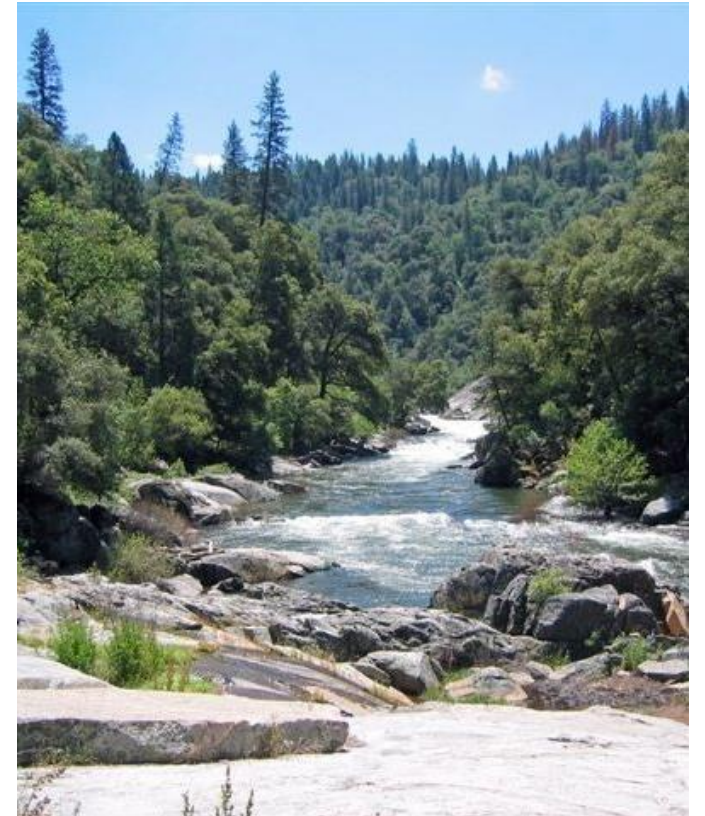
LAIF: Local Agency Investment Fund



Pardee Reservoir.

UMRWA Funding

- Annual operations funded by member agencies
- EBMUD currently pays 60 percent
 - Receive credit for in kind contributions
 - UMRWA Secretary and Treasurer are EBMUD staff
- Amador County entities: 20 percent
- Calaveras County entities: 20 percent



Mokelumne River

Watershed Forest Health Fee

- At the August 16, 2024 meeting, an UMRWA Board member suggested a new fee to support forest health work
- Each water agency member would pay 20 cents per month per connection
 - Potential cost to EBMUD of approximately \$1 million per year
- To be discussed at the October 4 UMRWA Board meeting

Staff Recommendations and Next Steps

- Do not move forward with proposed \$2-10 million investment in Blue Forest FRB at this time
 - EBMUD already provides 60 percent of UMRWA budget
 - Potentially support UMRWA through Advance and Reimbursement Agreement
 - EBMUD maintains its own Mokelumne watershed lands
- Do not support new UMRWA fee proposal with approximately \$1 million annual cost to EBMUD
- Consider Advance and Reimbursement Agreement at a future Board meeting pending resolution on other requests
- Staff will report back on UMRWA October Board meeting discussion on fee proposal

Questions?



**FLOWING
INTO
THE
FUTURE**