



AGENDA
EBMUD/EBRPD LIAISON COMMITTEE
Monday, September 19, 2022
1:30 p.m.
****Virtual****

Location

In accordance with Government Code section 54953(e), **this meeting will be conducted by webinar and teleconference only.** A physical location will not be provided for this meeting.

****Please see appendix for public participation instructions****

COMMITTEE MEMBERS: EBMUD: Andy Katz, Frank Mellon, Marguerite Young (Alternate)
EBRPD: Beverly Lane, Dee Rosario, Dennis Waespi,
Ellen Corbett (Alternate)

PUBLIC PARTICIPATION and COMMENT: ** Please see attached appendix for instructions**

ROLL CALL:

DISCUSSION:

1. East Bay Watershed Trail Use (EBMUD)
2. Drought Update (EBMUD)
3. Forest Health and Vegetation Management: (EBMUD/EBRPD)
 - East Bay Watershed Forest Health
 - Tree Mortality and Vegetation Management
4. NatureCheck (Ecological Health Assessment) (EBRPD)
5. Redwood Canyon Golf Course: (EBMUD/EBRPD)
 - Redwood Canyon Golf Course Reservoir Release Management and Coordination
 - Redwood Canyon Golf Course Update
6. Joint Powers Authority Policing Agreement Update (EBRPD)

ADJOURNMENT:

Disability Notice

If you require a disability-related modification or accommodation to participate in an EBMUD public meeting please call the Office of the Secretary (510) 287-0404. We will make reasonable arrangements to ensure accessibility. Some special equipment arrangements may require 48 hours advance notice.

Document Availability

Materials related to an item on this agenda that have been submitted to the EBMUD Board of Directors within 72 hours prior to this meeting are available for public inspection in EBMUD's Office of the Secretary at 375 11th Street, Oakland, California, during normal business hours, and can be viewed on our website at www.ebmud.com.



APPENDIX

EBMUD/EBRPD Liaison Committee Meeting Monday, September 19, 2022 1:30 p.m.

EBMUD public Board meetings will be conducted via Zoom.
Board meetings are recorded, and live-streamed on the District's website.

Please visit this page beforehand to familiarize yourself with Zoom.
<https://support.zoom.us/hc/en-us/articles/201362193-Joining-a-Meeting>

Online

<https://ebmud.zoom.us/j/94804788254?pwd=Z2duWU9RZzVqb3RMd1RlNXVlSjNsUT09>

Webinar ID: 948 0478 8254

Passcode: 467920

By Phone

Telephone: 1-669-900-6833

Webinar ID: 948 0478 8254

Passcode: 467920

International numbers available: <https://ebmud.zoom.us/j/94804788254?pwd=Z2duWU9RZzVqb3RMd1RlNXVlSjNsUT09>

Providing public comment

The EBMUD Board of Directors is limited by State law to providing a brief response, asking questions for clarification, or referring a matter to staff when responding to items that are not listed on the agenda.

If you wish to provide public comment please:

- Use the raise hand feature in Zoom to indicate you wish to make a public comment
<https://support.zoom.us/hc/en-us/articles/205566129-Raising-your-hand-in-a-webinar>
 - [If you participate by phone, press *9 to raise your hand](#)
- When prompted by the Secretary, please state your name, affiliation if applicable, and topic
- The Secretary will call each speaker in the order received
- Comments on **non-agenda items** will be heard at the beginning of the meeting
- Comments on **agenda items** will be heard when the item is up for consideration
- Each speaker is allotted 3 minutes to speak; the Committee Chair has the discretion to amend this time based on the number of speakers
- The Secretary will inform each speaker when the allotted time has concluded

Submitting written comments or materials

- Email written comments or other materials for the Board of Directors to SecOffice@ebmud.com.
- Please indicate the meeting date and agenda item number or off-agenda item in the subject of the email. Contact information is optional.
- **Please email by 4 p.m. the day prior to the scheduled Committee meeting;** written comments and other materials submitted to the Board of Directors will be filed in the record.

To observe the EBMUD/EBRPD Liaison Committee Meeting,
please visit: <https://www.ebmud.com/about-us/board-directors/board-meetings/>

This page is intentionally left blank.

EBMUD EAST BAY WATERSHED TRAIL USE

September 19, 2022

WATERSHED TRAIL USE HAS RETURNED TO PRE-PANDEMIC LEVELS

At the May 17, 2021 liaison committee meeting, EBMUD reported trail use increased significantly, likely a result of the pandemic restrictions placed on travel and other activities. As of January 2022, trail use has fallen to pre-pandemic levels. Hikers and equestrians continue to comprise most of EBMUD's trail users with an estimated 8,800 active permits, compared to 200 for cycling.

CURRENT STATUS

While the demand for increased trail access has returned to pre-pandemic levels, compliance with watershed rules and regulations is still low. Examples of compliance issues include illegal bicycle activity, dogs off leash, and hiking without a trail use permit.

In September 2021, EBMUD initiated a one-year pilot program suspending the permit requirement for accessing the De Laveaga trail traversing the San Pablo watershed between the cities of Oakland and Orinda. Between September 2021 and January 2022, there were 28 trail entries without a permit, compared to 233 entries with permit. Trail use data is derived from the actual sign-in sheets and may not be exact.

In January 2022, seven miles of unauthorized trails were discovered in the Upper San Leandro watershed. The trails were constructed by mountain bikers and accessed from Pinehurst Road and East Ridge Trail in Redwood Regional Park. Staff from both EBMUD and EBRPD have been working together to curtail use of the trails. Despite these efforts, illegal trail use continues.

NEXT STEPS

Staff will continue to monitor illegal watershed trail construction and use, and continue with enforcement and restoration measures.

CCC:MTT:dec

This page is intentionally left blank.

EBMUD DROUGHT UPDATE

September 19, 2022

CURRENT STATUS

Since our last update on May 17, 2021, drought conditions have continued in the East Bay due to below average precipitation and runoff.

On April 26, 2022, the EBMUD Board declared a Stage 2 drought and implemented a 10 percent mandatory District-wide conservation target. The drought declaration was an escalation from the Stage 1 drought declared in 2021, which called for 10 percent voluntary conservation.

EBMUD customers have conserved over 15 percent in July and August. EBMUD has purchased supplemental water supplies to maintain higher levels of storage going into 2023. As a result of customer conservation and supplemental water purchases, EBMUD will enter the upcoming winter with more water in storage than it did at the end of 2021. EBMUD has increased its drought water conservation messaging and has imposed an excessive use penalty for those residential customers using very large amounts of water.

NEXT STEPS

EBMUD will continue water conservation messaging and procurement of supplemental water supplies.

CCC:MTT:dec

This page is intentionally left blank.

EBMUD EAST BAY WATERSHED FOREST HEALTH

September 19, 2022

CURRENT STATUS

Since our last update on May 17, 2021, tree mortality observed on EBMUD's East Bay watershed lands continues to increase. Tree mortality is affecting the Monterey pine trees while the decline of the native Bay laurels appears to have subsided.

An estimated 7,000 pine trees are dead on the north watershed and about 500 Bay laurels on the south watershed are showing signs of decline. Monterey pines account for 500 acres of the non-native forest on District watershed lands. Bay laurels are included in the mixed hardwood (Bay laurels, coast live oak, madrone) forest that is the most common sub-type of the predominant forest type (hardwood forest) covering approximately 9,533 acres of watershed land.

The primary cause of mortality is drought, combined with bark beetles and old age. Forest Health Specialists from the California Department of Forestry and Fire Protection continue to monitor the forest health at affected watershed locations and removal of the dead Monterey pine trees is ongoing.

Tree removal increased from 229 trees in 2021 to 751 trees in 2022 at a cost of \$474,000. In addition to the pines, EBMUD collaborated with the City of Orinda on a fuel reduction project covering four acres adjacent to Camino Pablo. The focus of the effort was to reduce fuel loads and improve the evacuation route.

NEXT STEPS

Continue to monitor the Bay forests and increase removal of dead Monterey pines to 1,200 trees in 2022.

CCC:MTT:dec

This page is intentionally left blank.

TREE MORTALITY AND VEGETATION MANAGEMENT
EBRPD
September 19, 2022

CURRENT STATUS

Fire Chief Aileen Theile will provide an update on sudden vegetation mortality and dieback.

First noted in October 2020, the East Bay Regional Park District (EBRPD) has been impacted by a sudden onset of tree mortality and dieback, affecting Eucalyptus, Acacia, Bay, Pine, and other vegetation. This has resulted in dead standing and highly dangerous stands in the Urban Interface of the East Bay Hills.

The most significant areas of impact are Anthony Chabot Regional Park (Castro Valley), Reinhardt Redwood Regional Park (Oakland/Berkeley), and Tilden Regional Park (Oakland/Berkeley). Many of the areas impacted are in old Eucalyptus plantations with high tree per acre fuel loading.

To date, EBRPD has tracked approximately 1,500 acres of tree die-off in our parks alone. The cause is attributed to climate change and a direct correlation to drought. Below is a list by a park of acres affected by die-off and the park in which it has been detected. All the listed acres below are within State Responsibility Areas (SRA) in the Santa Clara Unit.

EBRPD created an internal Tree Mortality Taskforce, including members from Fire, Stewardship, Operations, Public Affairs, and Government Affairs departments. EBRPD has begun operations to address and treat some of these areas in East Bay parks, with the largest project to date beginning in September. Additionally, by pursuing the California Vegetation Treatment Program (CalVTP) permitting, an additional 2,300 acres for treatment in the areas discussed above is in progress with work anticipated to be operational at the beginning of 2023. This will allow EBRPD to conduct vegetation management activities to take place on up to 5,300 acres of its property in the areas most impacted by tree mortality and dieback when combined with current permitting.

This situation, however, is not only affecting EBRPD's park system. It has also been detected in other jurisdictions within Alameda and Contra Costa counties which will require a coordinated response, funding, and mitigation measures to address the situation.

Site Area or Park Name	Area Type	Acres Impacted
Anthony Chabot Regional Park	Hazardous Mitigation Area	371.2
Anthony Chabot Regional Park	Study Area	253.2
Carquinez Regional Shoreline	Hazardous Mitigation Area	25.6
Garin Regional Park	Hazardous Mitigation Area	2.1
Las Trampas Regional Preserve	Study Area	11.5

Miller/Knox Regional Shoreline	Hazardous Mitigation Area	40.5
East Bay Municipal Utility District Lands	Hazardous Mitigation Area	119.8
East Bay Municipal Utility District Lands	Study Area	442.8
Point Pinole Regional Shoreline	Study Area	14.1
Reinhardt Redwood Regional Park	Hazardous Mitigation Area	57.9
Reinhardt Redwood Regional Park	Study Area	61.0
Sibley Regional Preserve	Study Area	43.1
Tilden Regional Park	Hazardous Mitigation Area	62.2
Total		1,505

NATURECHECK UPDATE
EBRPD
September 19, 2022

CURRENT STATUS

Stewardship Chief Matt Graul and stewardship staff will summarize the results of the *NatureCheck: Understanding Wildlife Health on East Bay Lands in Alameda and Contra Costa Counties*.

The *NatureCheck* report provides a landscape-scale ecological assessment of wildlife within East Bay Stewardship Network (Network) lands in Alameda and Contra Costa counties, California (for the project's area of focus and Network partners, see attached Figure).

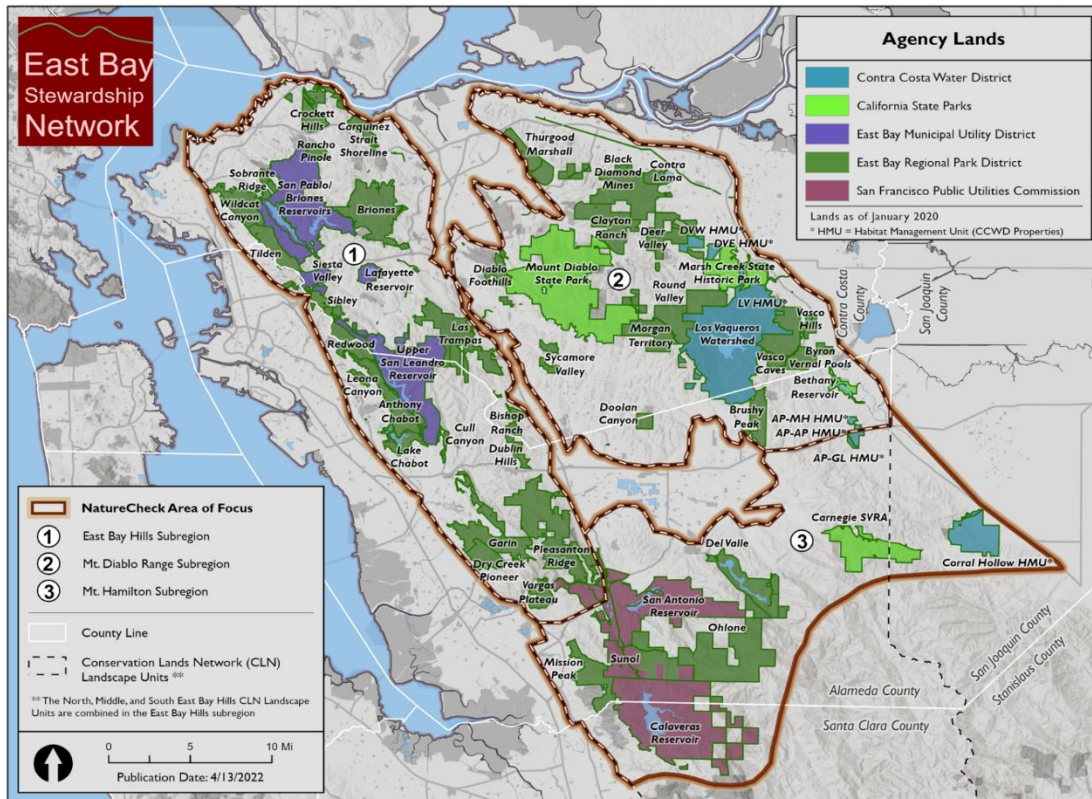
This report looks at the condition and trend of select wildlife species deemed to be good indicators of the region's ecological health and for which we either have or are in the process of collecting data. As the first such ecological health assessment for the East Bay region, the project establishes a baseline against which we can use the quantitative metrics developed for each indicator to measure change over time. Understanding and tracking these changes will help us better manage these lands to support their ecological integrity and resiliency.

This report crosses jurisdictional boundaries and combines and analyzes data from across the area of focus. This includes publicly owned Network partner lands managed by California State Parks (CSP), Contra Costa Water District (CCWD), East Bay Municipal Utility District (EBMUD), East Bay Regional Park District (EBRPD), and San Francisco Public Utilities Commission (SFPUC).

Together, these Network partner agencies oversee and care for more than 225,000 acres, or almost 25% of the land in Alameda and Contra Costa counties. Their parks, open spaces, conservation areas, and reservoirs are home to the watersheds that provide clean drinking water, habitats that preserve the biodiversity and ecosystem functions the world depends upon, and expansive outdoor spaces for public enjoyment.

NEXT STEPS

Moving forward, the East Bay Stewardship Network is poised to apply for grant opportunities to fill existing data gaps and implement restoration projects that address concerns identified in the *NatureCheck* report. In addition, there are opportunities for EBMUD and EBRPD to work with the Network partners and other interested land managers to streamline data collection and analysis.



EBMUD REDWOOD CANYON GOLF COURSE RESERVOIR RELEASE MANAGEMENT AND COORDINATION

September 19, 2022

CURRENT STATUS

The Redwood Canyon Golf Course (RCGC) at Lake Chabot is managed by Touchstone Golf LLC (Touchstone) through a 20-year concessionaire agreement with East Bay Regional Park District (EBRPD) executed in 2017. The property is leased to EBRPD from the East Bay Municipal Utility District (EBMUD) through a 25-year lease agreement executed in 2015. EBMUD operates Upper San Leandro Reservoir, which is upstream of the RCGC. Releases from the reservoir are conveyed through the RCGC via San Leandro Creek. Because of limited creek hydraulic capacity, releases during wet years impact RCGC operations by creating standing water on fairways and will impact cart bridges along and across the creek.

In 2012, EBRPD removed debris, brush and fallen trees from the creek between the golf course and Lake Chabot, with the intent of increasing flow capacity through the golf course and reducing flood risks. Channel maintenance is the responsibility of EBRPD pursuant to the lease agreement with EBMUD. At EBRPD's expense, EBRPD is responsible for constructing storm water improvements, keeping natural water courses (including San Leandro Creek) free of debris and vegetation that obstruct the natural flow of water or cause undercutting or erosion of banks. Touchstone has also initiated various drainage improvements including silt removal and channelization earthwork.

Despite these efforts, creek capacity remains significantly lower than historical observations. Approximately 15 years ago, creek capacity below Upper San Leandro Reservoir was about 175 cubic feet per second (cfs). In November 2017, field measurements confirmed the creek capacity is now approximately 70 cfs, a decline of about 60 percent.

Restored creek capacity is in the interest of all three parties. In wetter years, releases from Upper San Leandro Reservoir may be significantly higher than 70 cfs, which can impact golf course operations. The wet winters of 2017 and 2019 were especially challenging. Fortunately, close coordination between EBMUD, EBRPD, and Touchstone minimized the impacts. The two atmospheric river storms in October and December 2021 did not have an impact on the RCGC, primarily because of available storage in Upper San Leandro Reservoir.

NEXT STEPS

In 2017, EBRPD initiated the RCGC Storm Damage Repair Project (project) with grant funding from the Federal Emergency Management Agency. The project will replace bridge crossings and restore channel capacity to 175 cfs by removing about 5,400 cubic yards of dredged material. In July 2022, EBRPD facilitated a site assessment to evaluate potential environmental impacts. The project is still in the design phase and construction may not be completed until 2024. EBMUD will continue to support this project and coordinate water releases from Upper San Leandro Reservoir, with the understanding that wetter years could impact golf course operations.

CCC:DAB:sd

This page is intentionally left blank.

REDWOOD CANYON GOLF COURSE UPDATE
EBRPD
September 19, 2022

CURRENT STATUS

Staff will discuss the ongoing operation and maintenance at Redwood Canyon Golf Course. This will include an introduction of the Touchstone Golf team, an update on the status of community outreach, vegetation work, as well as irrigation and other site improvements.

This page is intentionally left blank.

JPA POLICING AGREEMENT UPDATE
EBRPD
September 19, 2022

CURRENT STATUS

Public Safety Lieutenant Terrence Cotcher and EBMUD JPA Officers will discuss the current state of the East Bay Regional Park District's Police Department. This will include the deployment of resources to meet the department's obligation per the Joint Powers Agreement.