

# Building resilience in earthquake country

Imagine a devastating earthquake along the Hayward Fault, directly beneath our East Bay communities.

*EBMUD monitors operations around the clock.*

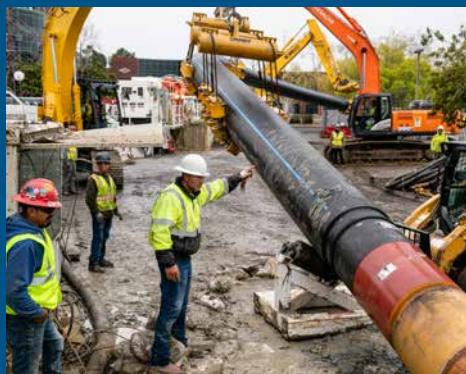


Violent shaking leads to casualties, fires, and severe damage to buildings, roads and regional infrastructure. In the aftermath, power lines are down, communication is interrupted, and you find yourself with limited access to water during an extensive rebuilding period.

U.S. Geological Survey researchers conclude such a scenario is a real possibility and, frankly, it's one that keeps us up at night. A major earthquake represents the most significant threat to EBMUD's ability to ensure reliable water and wastewater service. Powerful jolts and liquifying soils could impact our aqueducts, water treatment plants, distribution pipelines and wastewater facilities.

To strengthen our resiliency, EBMUD is strategically enhancing our infrastructure and earthquake readiness. Since the 1989 Loma Prieta earthquake, we've invested hundreds of millions of dollars in seismic improvements. We're upgrading our

distribution network with earthquake-resistant pipes and flexible joints to help things bend but not break when the ground shakes. We've developed systems redundancies, alternate ways to deliver water and rapid repair strategies to restore service as quickly as possible. No amount of preparation can eliminate all risk, but we train for emergencies and develop continuity plans with the communities we serve.



*Earthquake-resistant pipelines improve system resilience.*

In the event of a significant service disruption for individual homes, EBMUD and local cities will coordinate water distribution points across our community. We will keep you informed with timely updates about water outages and boil water alerts.

## We also need you to be prepared.

### → Store emergency water

Have enough for three to seven days. We recommend two gallons per person per day, plus more for pets.

### → Develop a plan

Resources are available at [ebmud.com/emergency-preparedness](http://ebmud.com/emergency-preparedness).

### → Stay informed

Sign up for county emergency alerts. Follow EBMUD on social media. And importantly, subscribe to EBMUD notifications at [ebmud.com/subscriptions](http://ebmud.com/subscriptions).

# Ready for wildfire emergencies

With wildfire season upon us, EBMUD is on alert for emergencies that could threaten critical infrastructure, harm watershed lands and damage water quality.



Learn more about EBMUD's fire safety strategies at [ebmud.com/firesafety](https://ebmud.com/firesafety).

EBMUD manages 57,000 acres of open space in the East Bay and on the Mokelumne River watershed that feeds Pardee and Camanche reservoirs in the Sierra Nevada foothills. Our rangers and watershed staff work throughout the year to remove highly flammable vegetation, build and maintain fuel breaks, and coordinate with local fire departments to conduct prescribed burns and respond to blazes that could impact water supplies.

These steps help protect communities from wildfire threats to life and property. They reduce the risks of burn scar erosion

that can impact water quality in rivers and reservoirs. And they support vibrant, healthy habitats for the wildlife that abounds on the lands and in the waterways we steward.

EBMUD is also prepared to keep our water flowing should wildfire risk trigger a Public Safety Power Shutoff (PSPS). We maintain backup generators at critical facilities to ensure we have the electricity we need to treat and pump water through our distribution system. Similarly, we have backup power available at our wastewater treatment plant so that we

can continue to protect public health and the San Francisco Bay around the clock.

To help protect yourself and your community from fire danger, be sure to clear weeds, thin trees and trim bushes to create defensible space around your home. Assist EBMUD in reaching you in an emergency by updating your contact information at [ebmud.com/subscriptions](https://ebmud.com/subscriptions).

Proper preparation makes us all safer in the face of wildfires. EBMUD is here to provide the water you count on, no matter the season.

Above: EBMUD rangers protect watersheds surrounding local and upcountry reservoirs.



P.O. Box 24055 • Oakland, CA 94623  
866-403-2683  
[ebmud.com](https://ebmud.com)

#### EBMUD Mission Statement

To manage the natural resources with which the District is entrusted; to provide reliable, high-quality water and wastewater services at fair and reasonable rates for the people of the East Bay; and to preserve and protect the environment for future generations.

Connect with us:



Printed on recycled paper

S-O 2024 300 M