

# EBMUD Landscape Advisory Committee, General Meeting

## Let's Talk Shop

June 18, 2025

[Kristin.Bowman@ebmud.com](mailto:Kristin.Bowman@ebmud.com)

[Lindsay.Kinsler@ebmud.com](mailto:Lindsay.Kinsler@ebmud.com)

[Nicolle.Patterson@ebmud.com](mailto:Nicolle.Patterson@ebmud.com)



# Announcements

- Welcome/meeting logistics
- Announcements
  - LAC and EBMUD updated low water use plant list
    - Eb mud.com/plants
  - UC Cooperative Extension follow up to Strategies to Prevent Urban Heat
    - Support tree health
    - Develop professional training on transitioning trees from lawn to low water landscape.
    - ReScape Tree Health Training June 25<sup>th</sup> – Concord
  - CII Landscape site visits/possibly peer-to-peer
  - Updating our commercial landscape spotlight page
    - Excellent before and after photos
  - Non-Functional Turf Watering Ban for Commercial Properties (AB 1572)
    - Municipal Properties – 1/2027; Commercial/Institutional 1/2028; HOA 1/2029; DAC 1/2031
  - Irrigation sub-committee (Fall 2025)



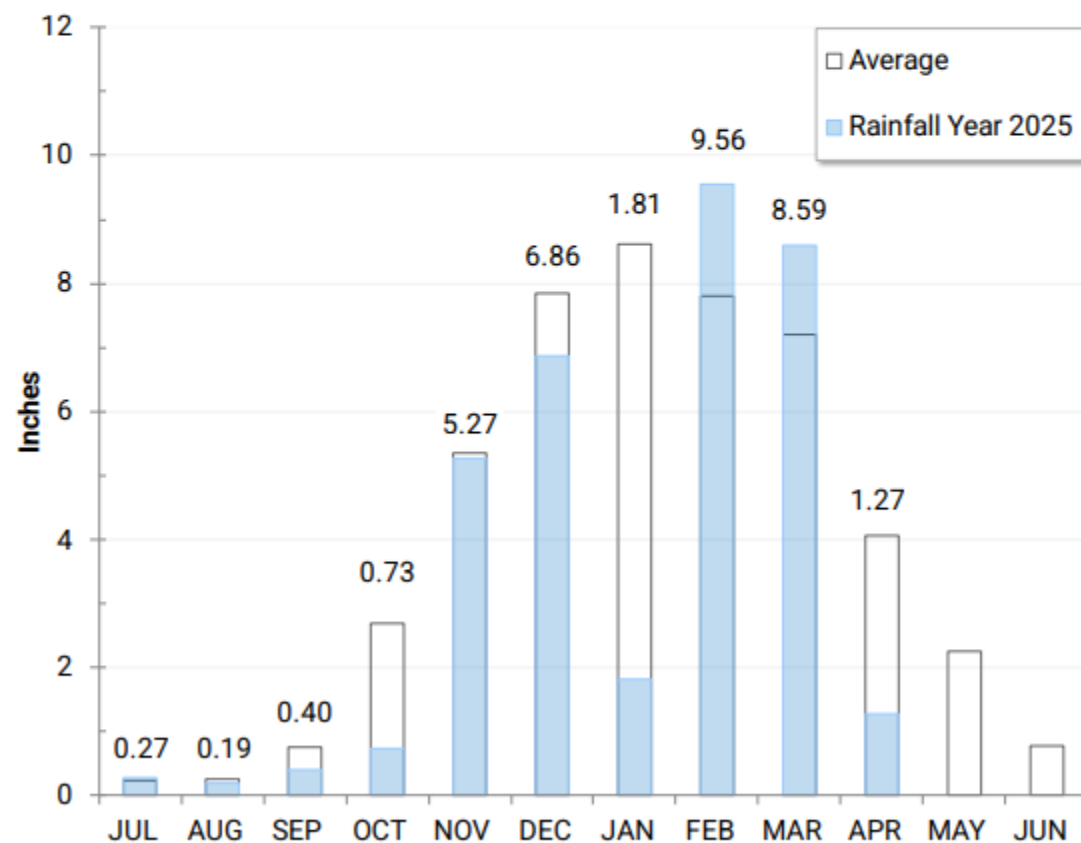
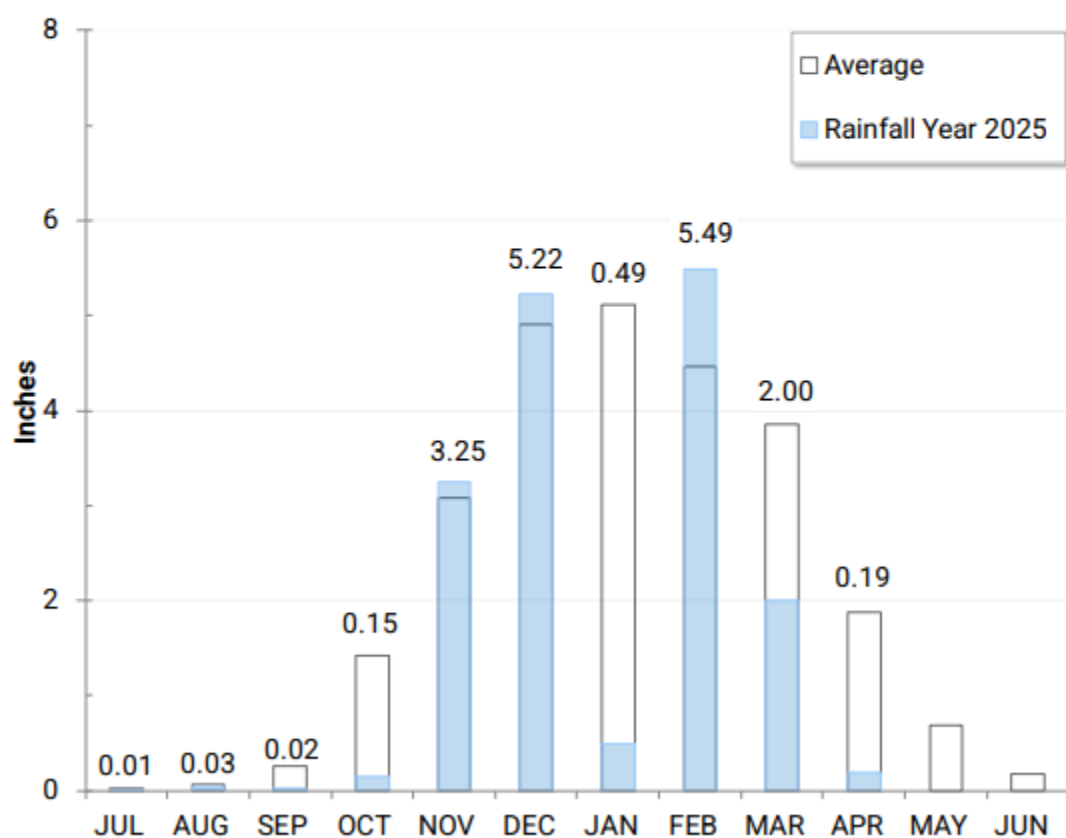
City Hall West, 950 W Mall Square, Alameda

City

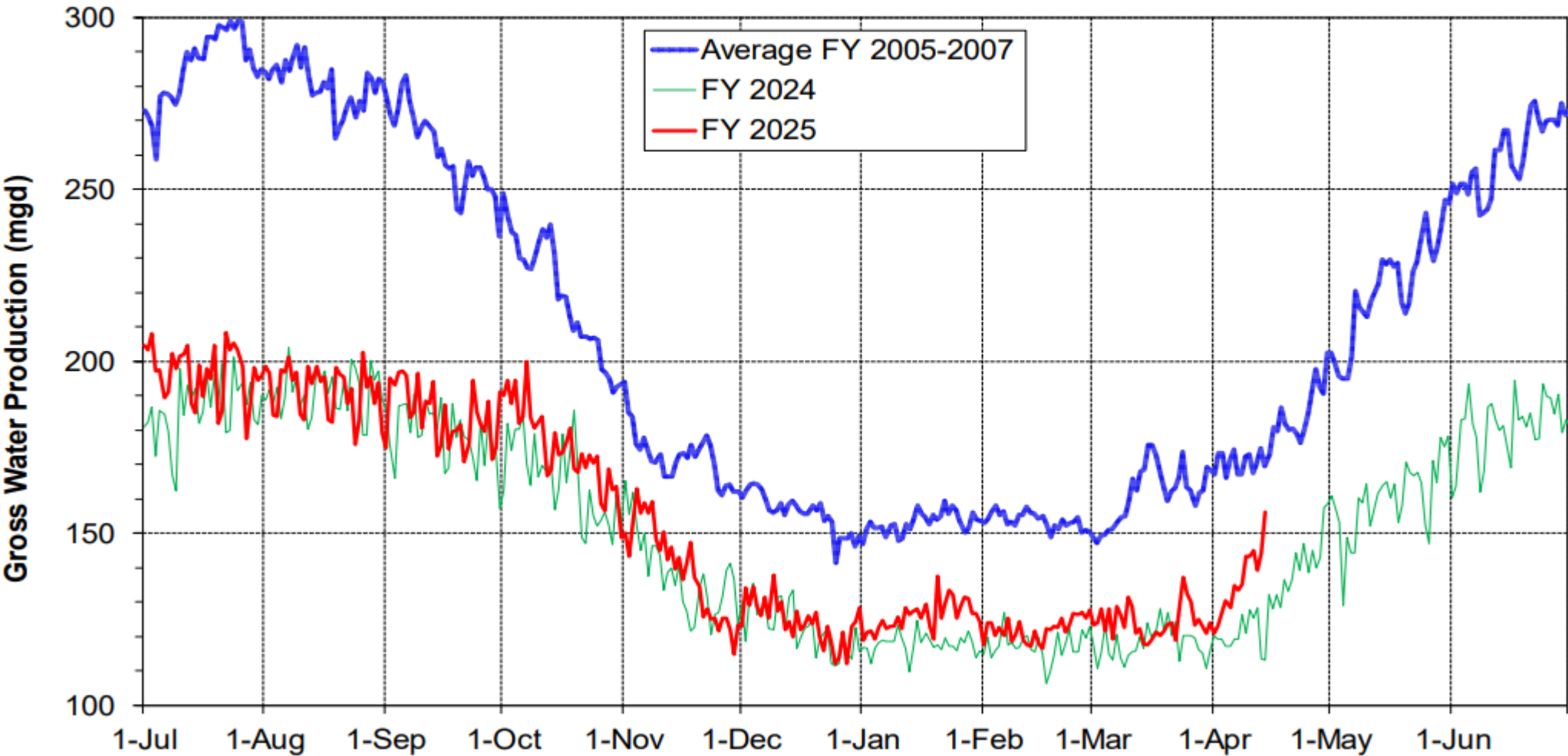
# Precipitation as of April 14

East Bay: 16.8" (68% of average)

Mokelumne: 35.0" (81% of Average)



# Gross Water Production for Fiscal Year (FY)



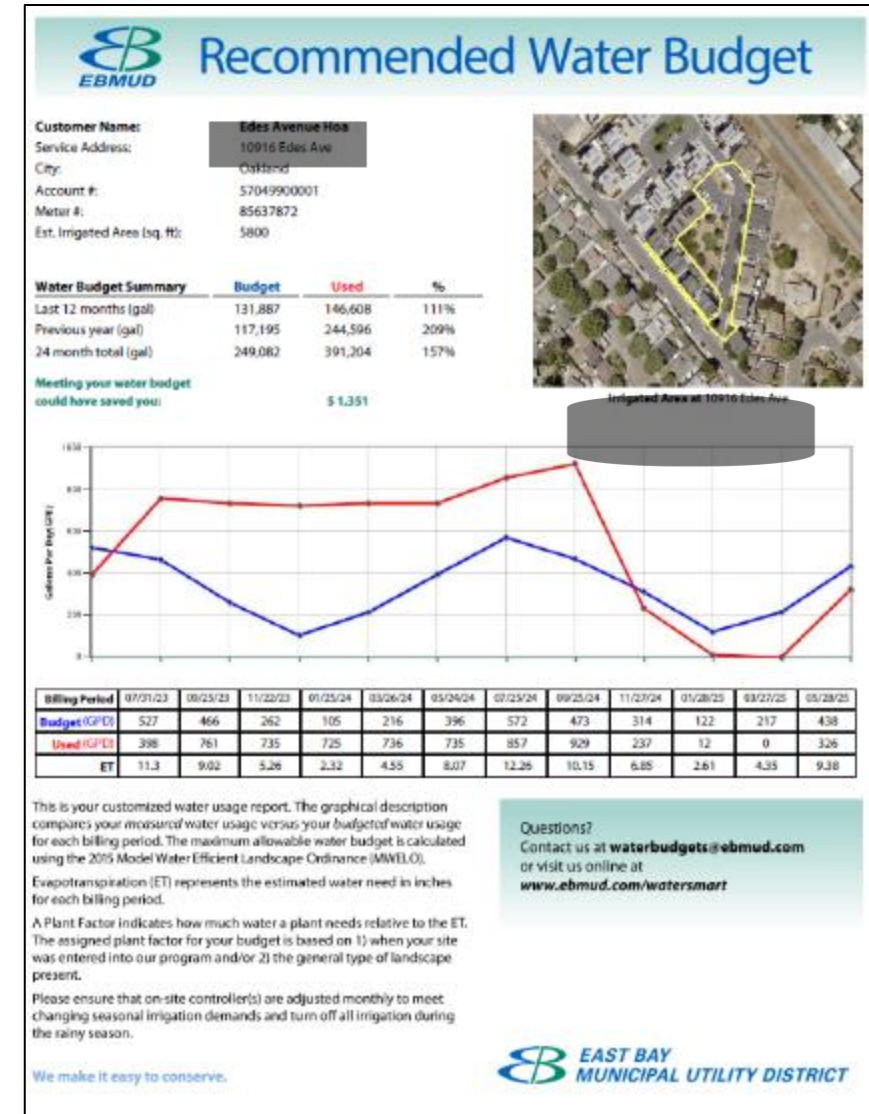


# Rebates

- Up to \$15,000 for commercial every two years.
- Extra \$5,000 for turf conversions until end of 2026.
- Irrigation – spray to drip, weather based smart controllers, flow sensors and more.
- Office Hours 1<sup>st</sup> and 3<sup>rd</sup> Tues 12-1

## Water Budgets

- Consumption vs Budget
- Landscape Managers



# Colorado's Transformative Landscapes Report

- Multi-benefits including heat, biodiversity, reducing chemicals, equity and saving water.
- Multi-prong approach to water savings - must be combined with excellent irrigation management.
- Transformative Landscape Change; Agency Action 1.7 State-of-the-Science Report



# Let's Talk Shop

- Plants and Trees
  - Sources for native plants
  - How to monitor the health of newly planted trees receiving minimal hand watering
  - How to adapt tree irrigation as tree matures
  - Training professionals on native plant landscape care
- Irrigation
  - MP rotators vs Drip – which is more efficient
  - Maintaining subsurface drip buried to the root zone
  - Sprinkler and drip repair professional needed
- How to stabilize steep slopes without retaining walls
- Rebate
  - Lawn conversion steps – sequence and timing
  - Rebate information
  - Projects showing demonstrated water use savings
- Final Tips

# Final Tips

**Question:** Installing drought tolerant native plants and what kind of water system would be most effective in helping to establish plants?

**Answer:** Drip or high efficiency nozzles

**Question:** How to properly install line source dripline?

**Answer:** Manufacturer's website includes inline and point source; EBMUD handout.

**Question:** Needs of drought-adapted plants vs EBMUD watering schedule.

**Answer:** Guide is a starting point. Summer-dry native plants.

**Question:** Where can I put my garbage cans to comply with Zone Zero?

**Answer:** Ask your fire department – front or side cut out.

**Question:** How to influence landscape decisions if you are a renter?

**Answer:** Speak with property management, form a committee, provide a good plan to save water and money.



**Thank you!**

**[Kristin.Bowman@ebmud.com](mailto:Kristin.Bowman@ebmud.com)**

**[Nicolle.Patterson@ebmud.com](mailto:Nicolle.Patterson@ebmud.com)**

**[Lindsay.Kinsler@ebmud.com](mailto:Lindsay.Kinsler@ebmud.com)**

