

EBMUD EAST BAY WATERSHED TRAIL INFO: LAFAYETTE RESERVOIR RECREATION AREA – MAIN TRAILS

TRAIL	START	END	DISTANCE (mi)	LEASHED DOGS	HORSES	BICYCLES	SUN EXPOSURE	DIFFICULT
12 Rim	Parking lot entrance kiosk	Starting point	4.97 loop	Yes	No	No	Full sun	Moderate
13 Lakeside Nature (paved)	Visitor Center	Starting point	2.79 loop	Yes	No	Limited Hours	Equal parts shade and sun	Easy

TRAIL DESCRIPTIONS

- 12 **Rim:** This unpaved fire road traverses ridgetops surrounding Lafayette Reservoir. It leads through brushland and oak forests overlooking the reservoir. Well-graded fire roads connect the Rim Trail to Lakeside Nature Trail in several locations.
- 13 **Lakeside Nature:** This is a winding, easy, paved trail that circles the reservoir. It is a favorite with dog owners, fishing enthusiasts, joggers, and Sunday strollers. The Lakeside Nature Trail is open to bicyclists during limited hours. Horses are not allowed. Trail use permits are not required within the Lafayette Reservoir Recreation Area.

LAFAYETTE RESERVOIR RECREATION AREA – PARK RULES

General

- Stay on trails
- Do not feed wildlife
- Yield to service vehicles
- Keep your park clean

Water

- No swimming or wading
- EBMUD daily fishing access permit required to fish – purchase at Visitor Center
- Register all watercraft at Visitor Center

Picnic

- Barbeque in designated areas with charcoal only
- Picnic areas are shared spaces – be courteous to your neighbors
- Keep music at an appropriate volume

Pets

- Leash pets at all times – maximum leash length 6 feet
- No pets in water
- Be considerate – pick up after your pet

Wheels

- No skateboards
- No drones or other remote-controlled devices
- Bicycles and scooters allowed only on Lakeside Nature Trail and only at these times:
Sunday: Open to Noon
Tuesday & Thursday: Noon to Close

LAFAYETTE RESERVOIR RECREATION AREA – PARK SAFETY

Fire: The Lafayette Reservoir is vulnerable to wildfire. To reduce fire danger, keep cigarettes and barbecues in designated areas only and immediately report any smoke or fire hazards to park staff:

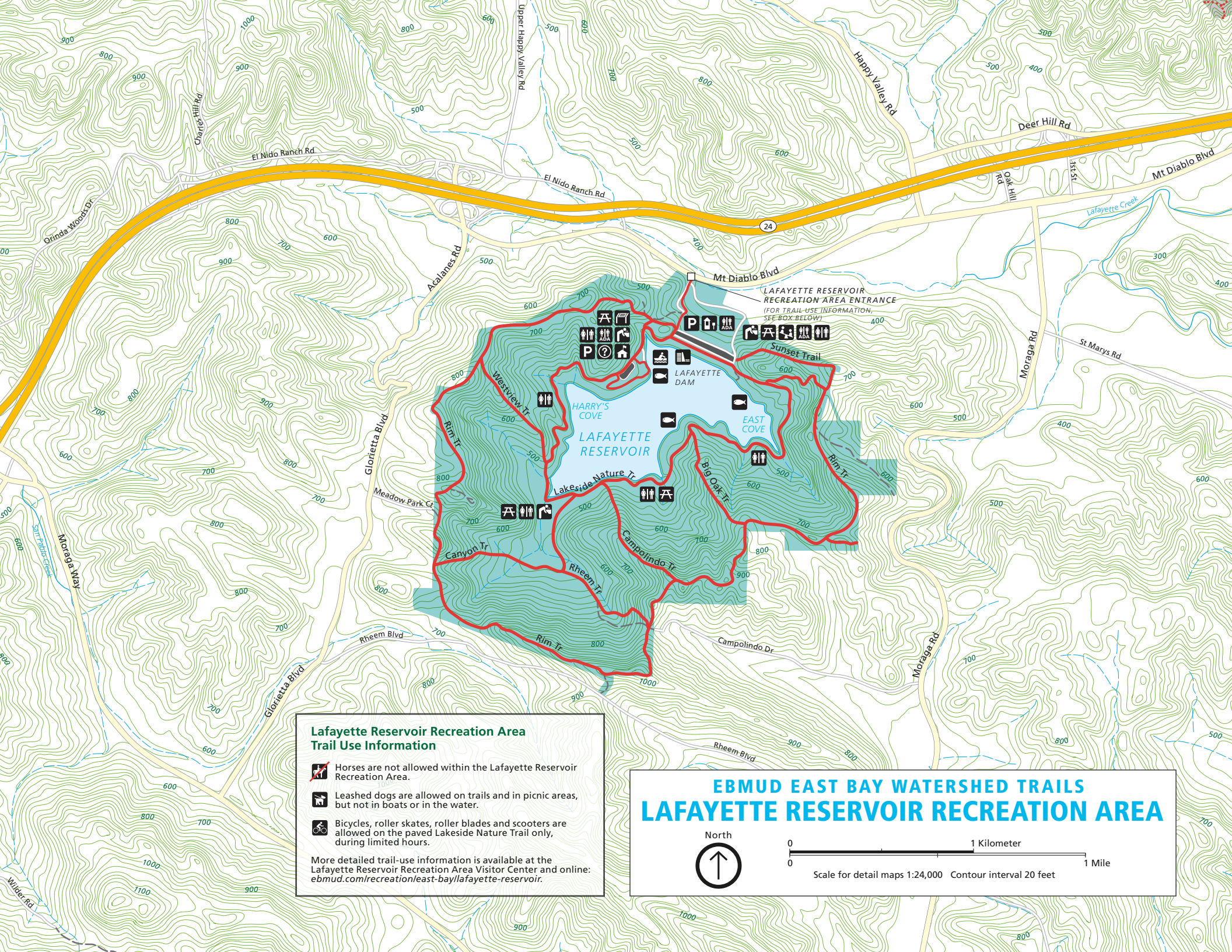
Mountain Lions: Although sightings are very rare and mountain lions go to extremes to avoid people, the Lafayette Reservoir is mountain lion habitat. Mountain Lions are most active at dusk and dawn. For added precaution, hike in groups and make noise as you go. If you encounter a mountain lion, do not run and do not attempt to approach it. Make yourself big, yell and back away slowly. If attacked, fight back aggressively.

Mushrooms: Two of the world's most toxic mushrooms grow in this region – the Amanita phalloides (Death Cap) and the Amanita ocreata (Western Destroying Angel). Do not eat or collect any mushrooms found in the wild. Keep pets on leash and children under close supervision.

Personal Safety: The Lafayette Reservoir is home to wildlife and this watershed is shared with the public. Park conditions change continuously. Be aware of your surroundings and listen to your intuition. If you see something wrong, report it.

Poison Oak: Poison oak is widespread at the Lafayette Reservoir. Depending on the season, its leaves can be green, yellow or red. When it loses its leaves in the winter, the plant's bare stems still retain irritating oils. To limit exposure, stay on trails, wear long sleeves and pants, and keep pets leashed. Remember: leaves of three, let it be.

Ticks: In this region, ticks are active year-round. To limit exposure, stay on trails and wear long sleeves and pants. Check yourself and your pets for ticks after every visit.




Lafayette Reservoir Recreation Area Trail Use Information

-  Horses are not allowed within the Lafayette Reservoir Recreation Area.
-  Leashed dogs are allowed on trails and in picnic areas, but not in boats or in the water.
-  Bicycles, roller skates, roller blades and scooters are allowed on the paved Lakeside Nature Trail only, during limited hours.

More detailed trail-use information is available at the Lafayette Reservoir Recreation Area Visitor Center and online: ebmud.com/recreation/east-bay/lafayette-reservoir.

**EBMUD EAST BAY WATERSHED TRAILS
LAFAYETTE RESERVOIR RECREATION AREA**

North


0 1 Kilometer 1 Mile
 0
 Scale for detail maps 1:24,000 Contour interval 20 feet