

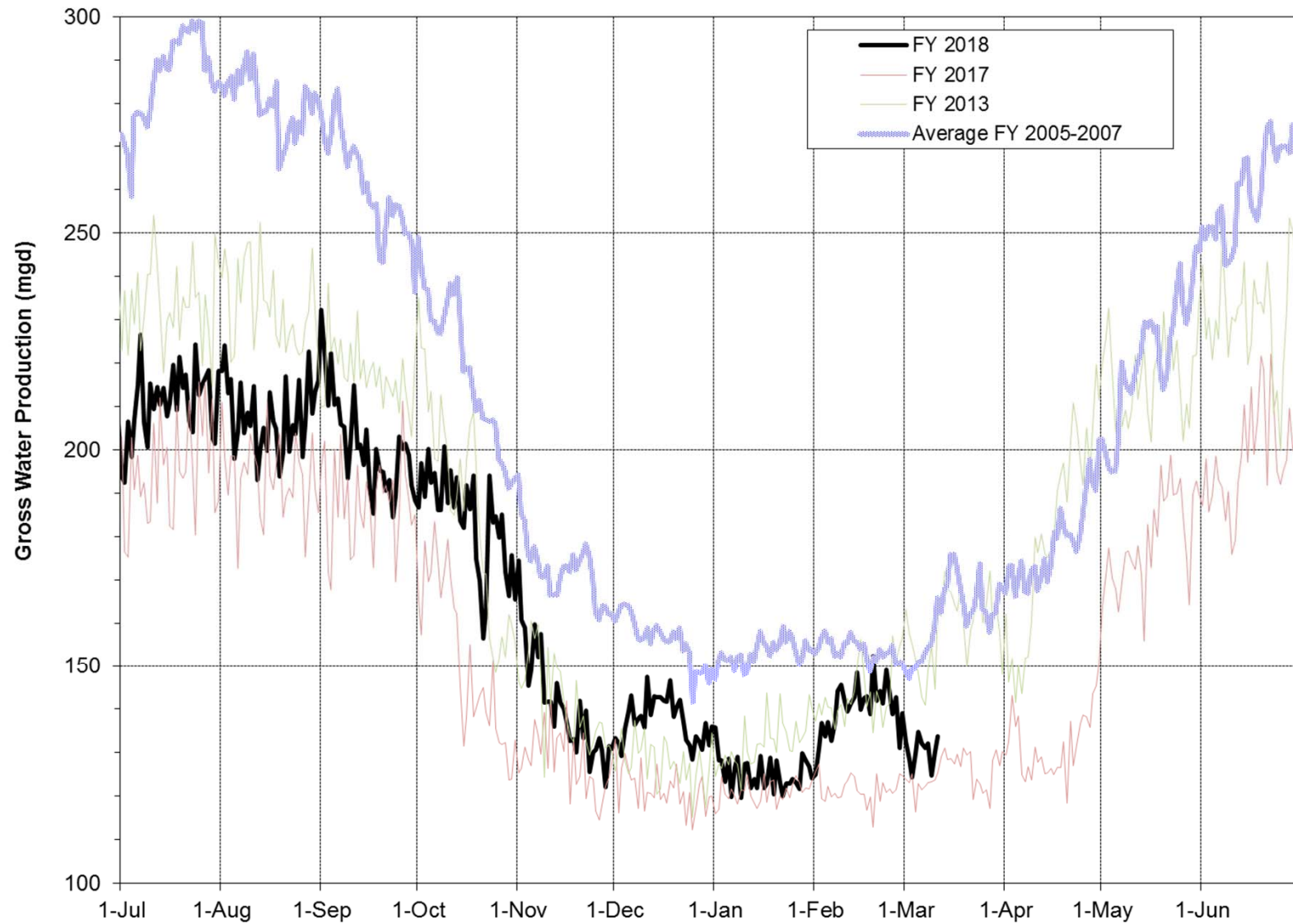
Water Supply Update

Board of Directors Meeting

March 13, 2018

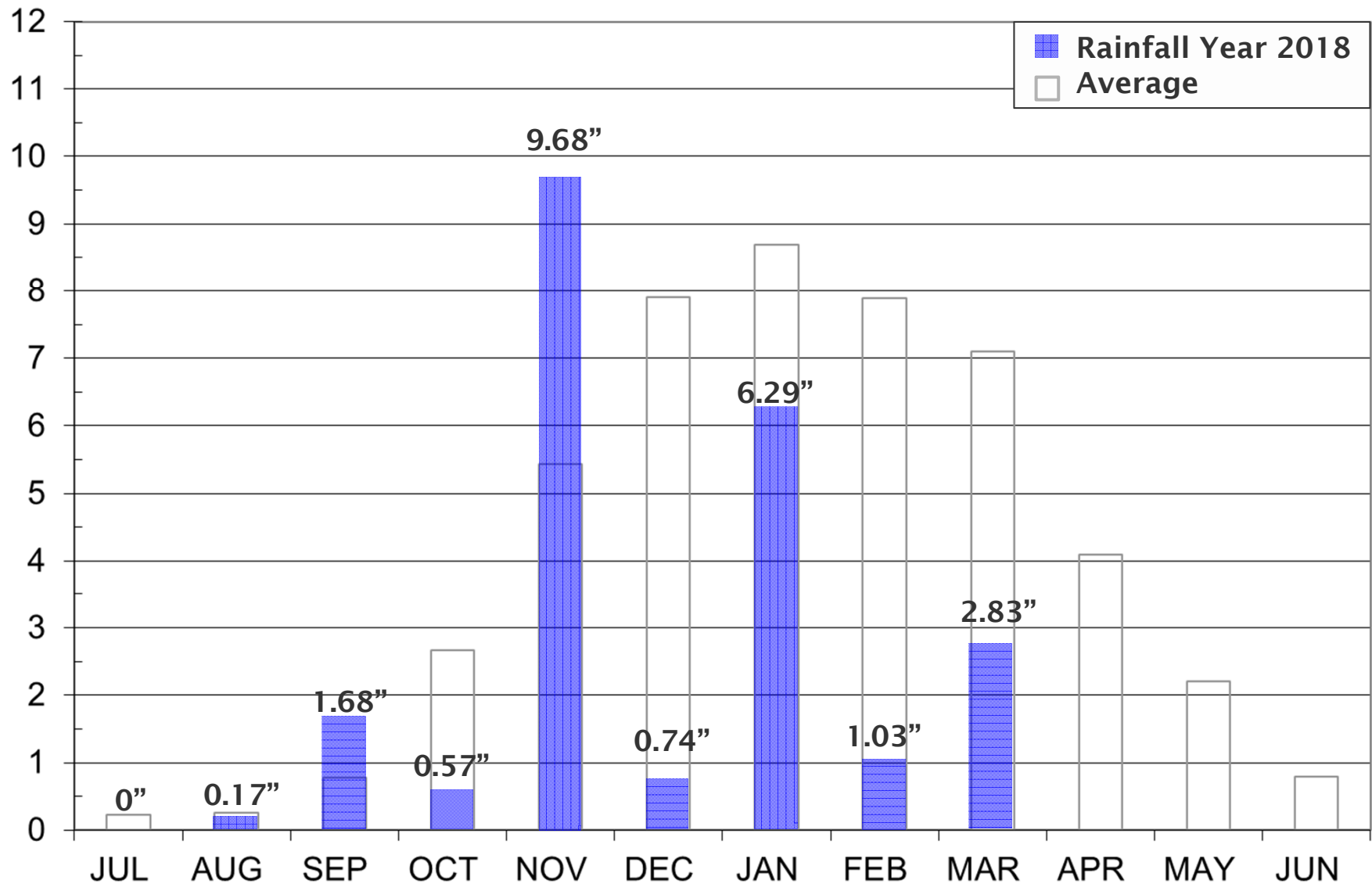
Current Water Supply

Gross Water Production



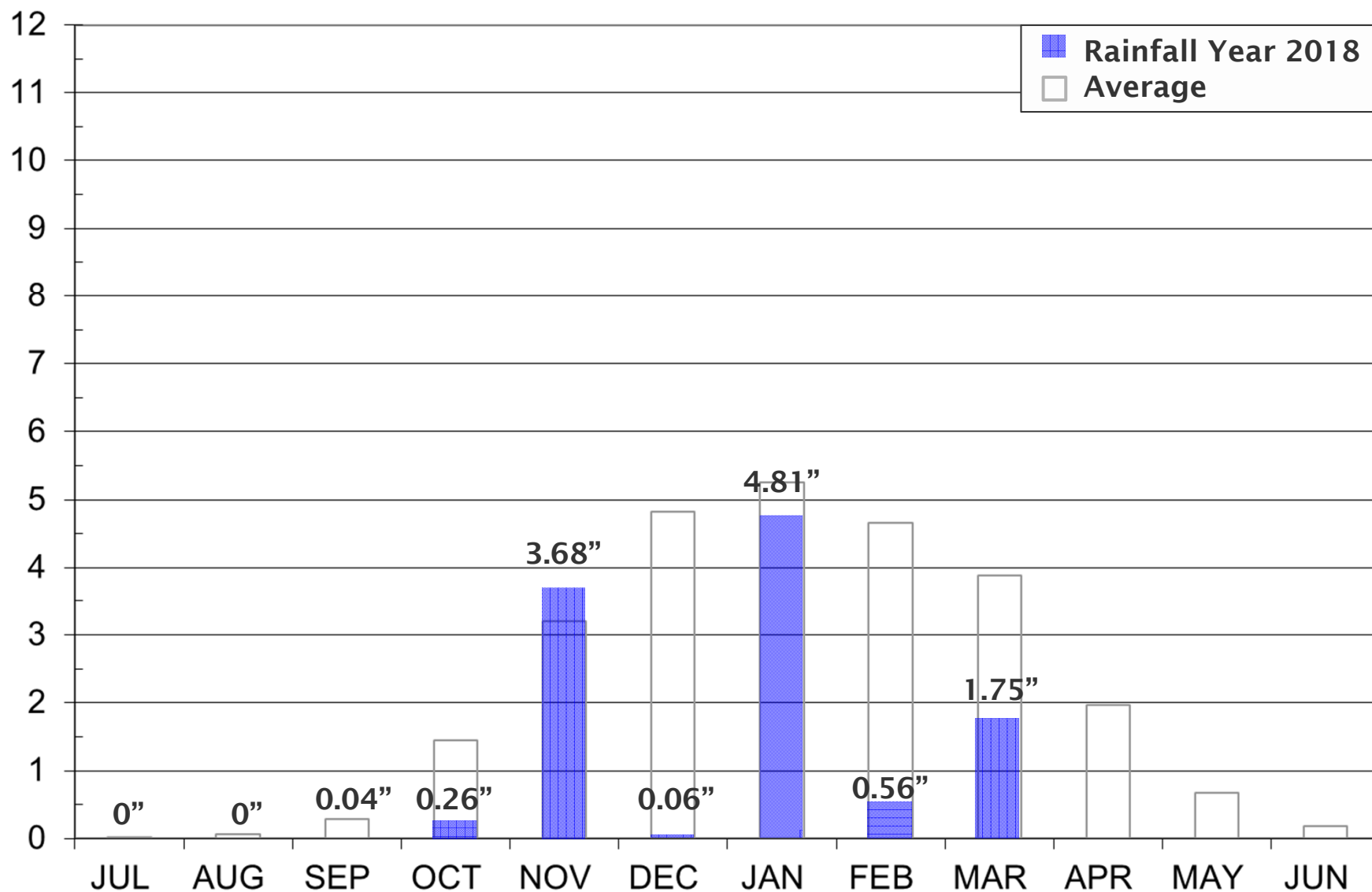
Current Water Supply

Mokelumne Precipitation



Current Water Supply

East Bay Precipitation



Current Water Supply

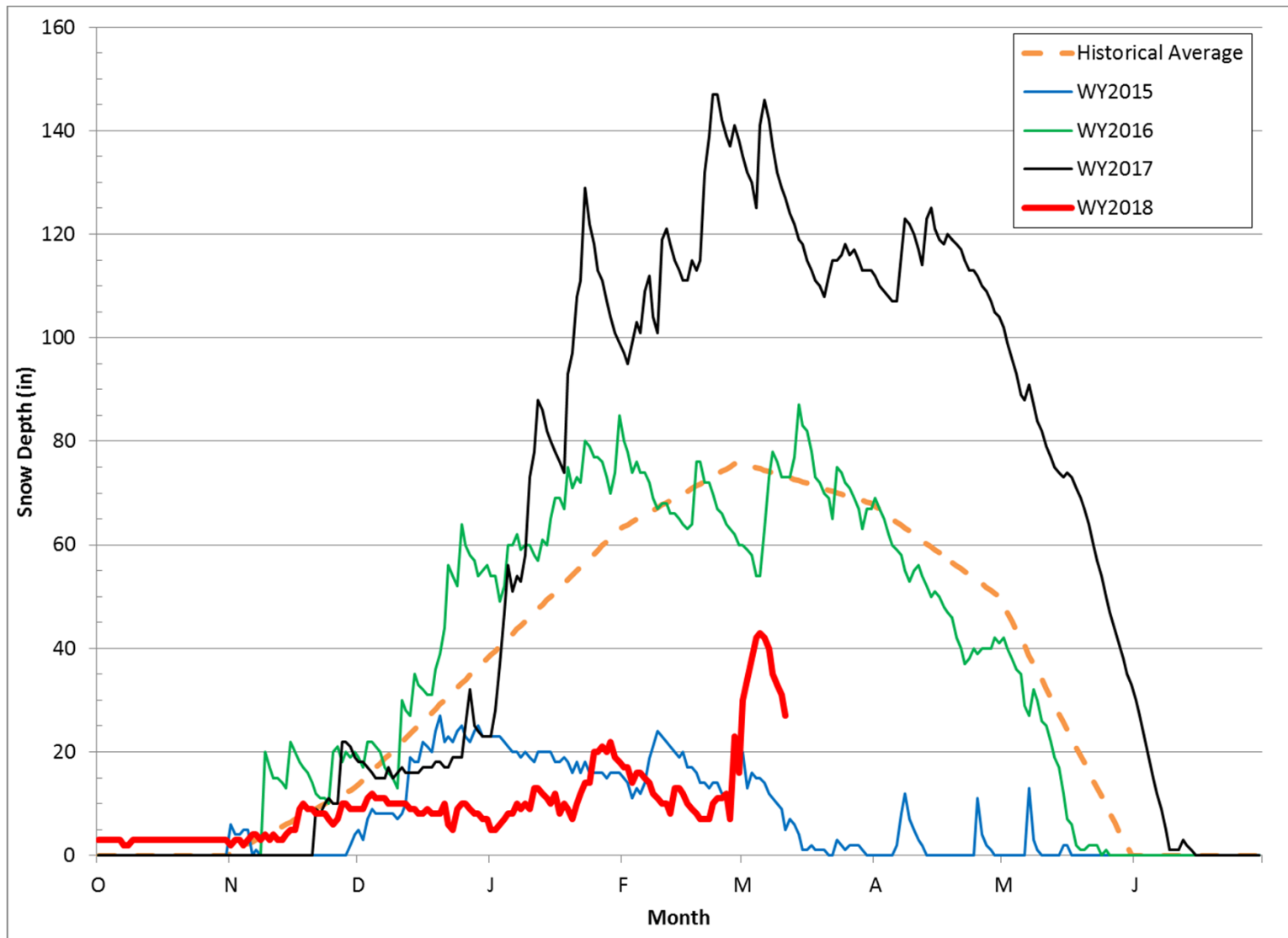
Precipitation



As of 3/11/2018	Cumulative Precipitation	% of Average
East Bay		
East Bay Watershed	11.15"	52%
Mokelumne Basin		
4-Station Average	22.99"	63%

Current Water Supply

Caples Lake Snow Depth



Current Water Supply

Snow



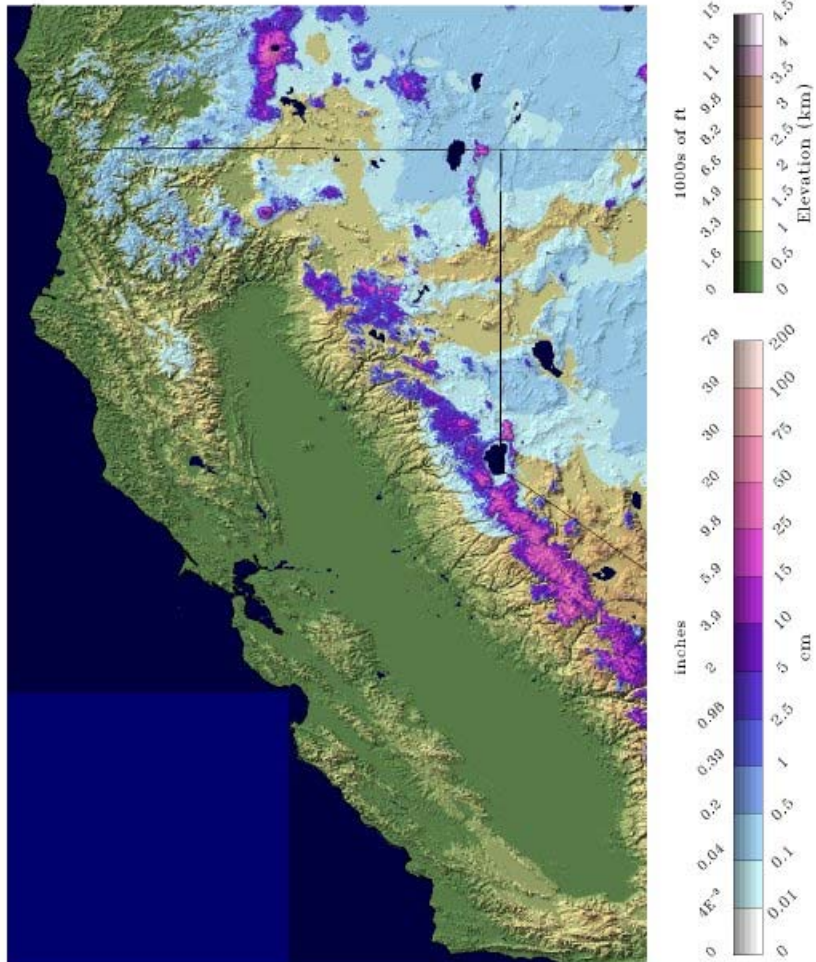
As of 3/11/2018	Inches	% of Average
Caples Lake Snow Depth	27.00"	37%
Caples Lake Snow Water Content	8.52"	31%

California Water Supply

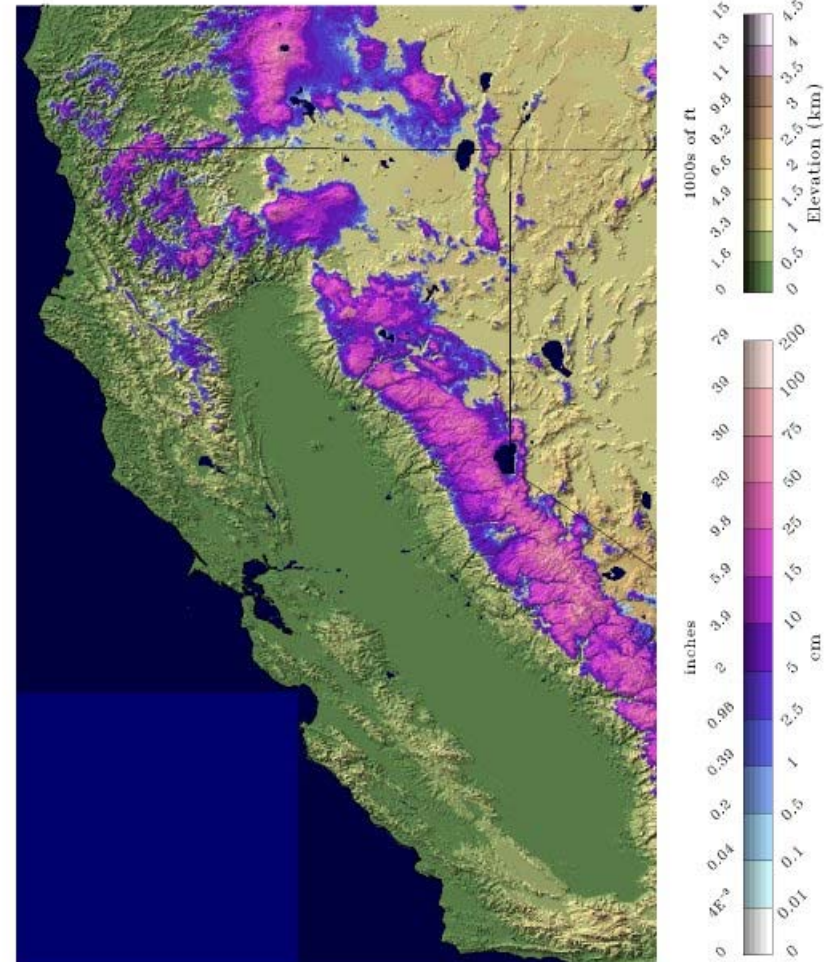
Snow Water Equivalent



February 12, 2018



March 12, 2018



California Water Supply

Automated Sensor Snow Water Equivalents



% of April 1 Average / % of Normal for This Date



Caples Lake Snow Water Content

31% / 31%

Current Water Supply

Reservoir Storage



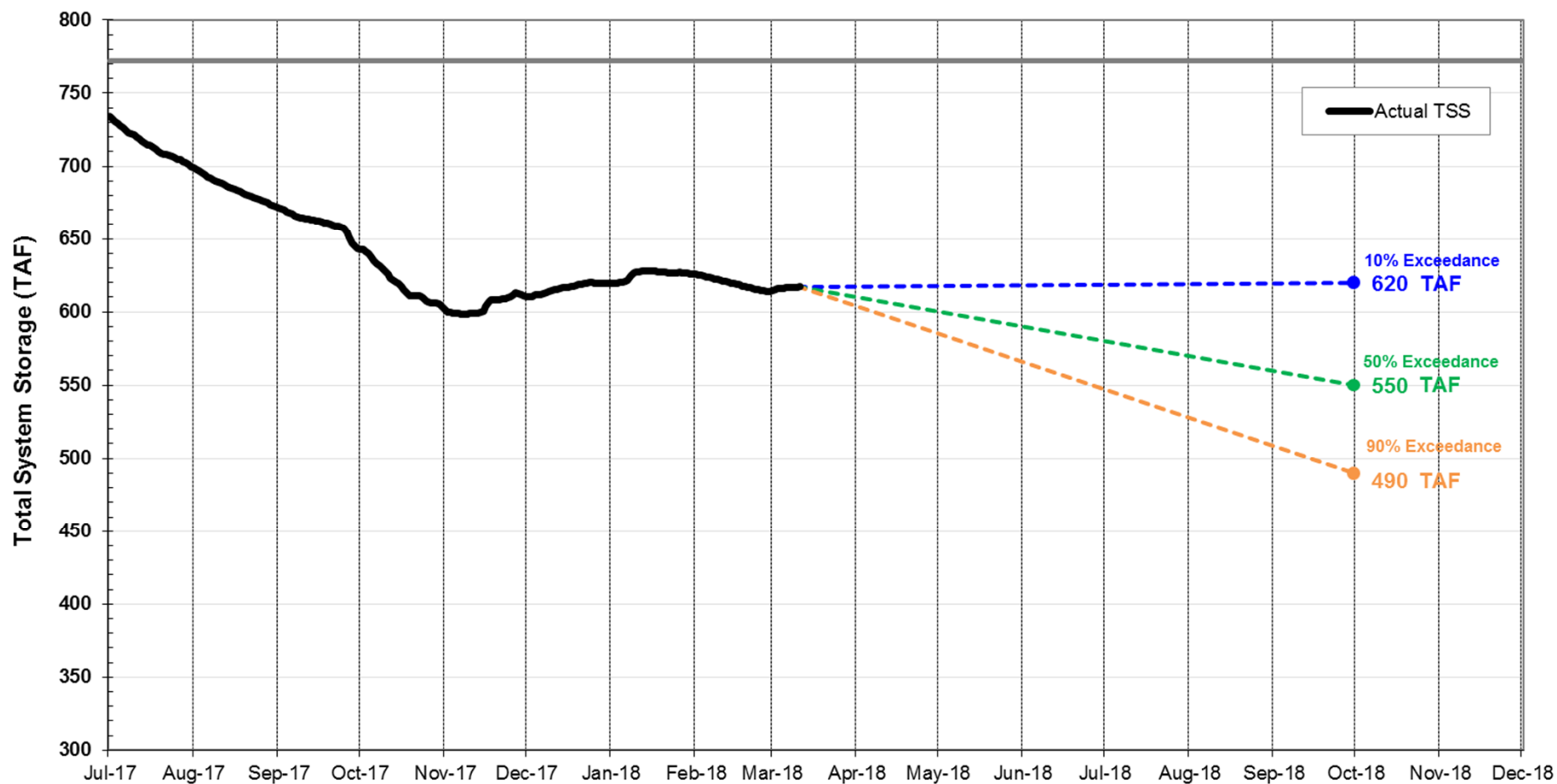
As of 3/11/2018	Current Storage	Percent of Average	Percent of Capacity
Pardee	190,500 AF	103%	93%
Camanche	298,250 AF	106%	72%
East Bay	128,490 AF	94%	85%
Total System	617,240 AF	102%	80%

Water Supply Projections

EBMUD Total System Storage 2018



EBMUD Total System Storage WY2018





WATER SUPPLY ENGINEERING DAILY REPORT

Monday, March 12, 2018

RESERVOIR STORAGE AND ELEVATION

	<u>WATER SURFACE</u>		<u>STORAGE</u>		<u>MAXIMUM CAPACITY</u>		Release	Spill
	Elevation	+Gain		+Gain	Elevation	Storage		
	Feet	-Loss	Ac-Ft	-Loss	Feet	Ac-Ft	Cfs	Cfs
<u>MOKELUMNE</u>								
Pardee	561.59	0.03	190570	70	567.65	203795	324	0
Camanche	218.4	0.03	298440	190	235.5	417120	341	0
<u>EAST BAY</u>								
Briones	568.63	0.23	53800	160	576.14	58960	0	0
Chabot	224.61	0	9470	0	227.25	10350	0	0
Lafayette	440.28	0	3190	0	449.16	4250	0	0
San Pablo	307.89	0.06	33940	50	313.68	38600	0	0
Upper San Leandro	444.61	0.02	28320	20	459.98	38905	0	0
Total East Bay Res.			128720	230		151065		
TOTAL SYSTEM STORAGE			617730	490		771980		

<u>DISTRIBUTION SYSTEM</u>			<u>MOKELUMNE SYSTEM</u>		
<u>DISTRIBUTION RESERVOIRS</u>			<u>AQUEDUCT DELIVERIES</u>		
	Storage	Operating		MG	Flow Conditions
	MG	Capacity			
Today	325	720	Line 1	37.5	GRAVITY
Total Previous Day	336		Line 2	48.2	GRAVITY
Total Change	-11		Line 3	95.4	GRAVITY
			TOTAL	181.1	280 Cfs
<u>WATER PRODUCTION</u>	Million	Capacity	<u>FSCC to MOK AQUEDUCTS (Measured at Brandt), MG</u>		
<u>AND DEMAND</u>	Gallons	MGD	Mok 1	0	
Lafayette WTP	0	25	Mok 2	0	
Orinda WTP	68	190		0 MG	
San Pablo WTP	0	30	<u>RIVER FLOWS AND RELEASES</u>		
Sobrante WTP	18.5	50			Cfs
Upper San Leandro WTP	0	45	Mokelumne River Natural Flow		759
Walnut Creek WTP	29.4	90	Pardee Reservoir Inflow		647
			Pardee Release to Camanche Res.		324
<u>TOTAL SURFACE PRODUCTION</u>	115.9	430	Pardee Release to JVID		0
Miscellaneous(Estimated)	0.4		Camanche Release to Mokel. River		341
<u>TOTAL WATER PRODUCTION</u>	116.3				
Change in Distribution System	-11		<u>PG&E CO. STORAGE (Acre-feet)</u>		
Wash Water from Distribution Sys.	2.9				Maximum
<u>SYSTEM DEMAND</u>	124.4			Storage	Change
East-of-Hills Demand	23.5		Old Reservoirs	9160	130
West-of-Hills Demand	100.9		Salt Springs Res.	34488	223
			Lower Bear Res.	10030	-130
			Total	53678	223

RAW WATER TRANSMISSION			Ac-ft	PRECIPITATION (Inches)				
	INPUT	DRAFT		THIS YEAR		AVERAGE YEAR		
Briones Res.	156	0						
San Pablo Res.	101	63	STATION		This	Season	Season	Season
U. San Leandro Res.	0	0		Today	Month	to-Date	to-Date	Total
			USL WTP	0.08	1.56	12.1	20.22	25.33
			Orinda WTP	0.05	3.3	15.45	25.55	32.06
			Lafayette Reservoir	0.03	2.04	10.3	22.68	28.18
			Walnut Creek WTP	0.03	3.09	13.04	18.78	23.02
			Camp Pardee	0	1.66	11.18	16.33	21.56
			Salt Springs P.H.	0	3.92	22.36	34.28	45.51
TOTAL				CAPLES LAKE (7,830 FT) DATA				
257				Today		Average		
63				Snow Depth		73 Inches		
				Water Content		27.4 Inches		
<u>REMARKS</u>								
WID Canal Diversion = 44 cfs								
Mokelumne River below WID = 238 cfs								

PG&E data as of 4:00 pm previous date.

All other data as of midnight.

WTP capacities are sustainable rates.