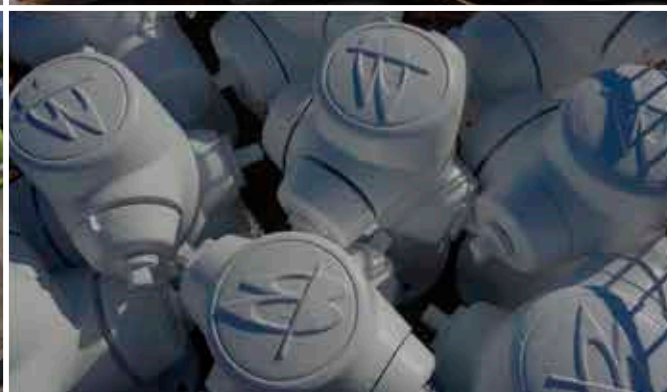
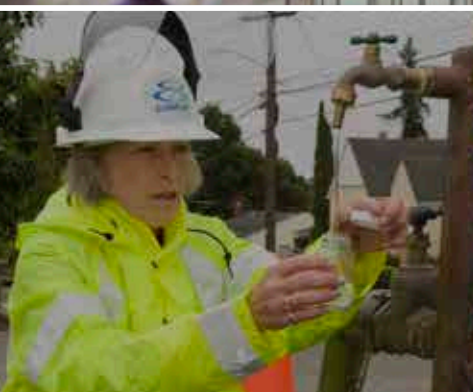
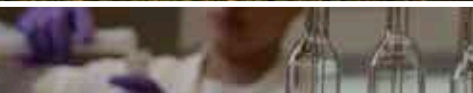
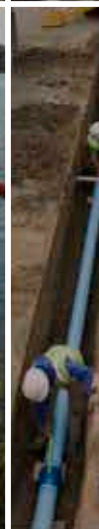
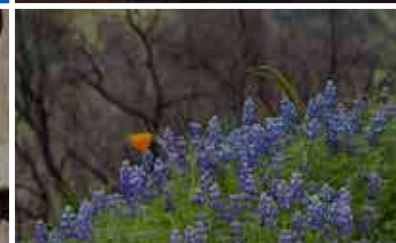
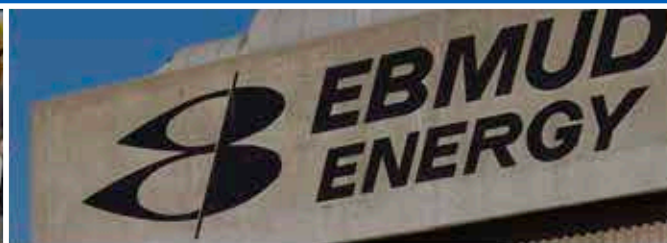
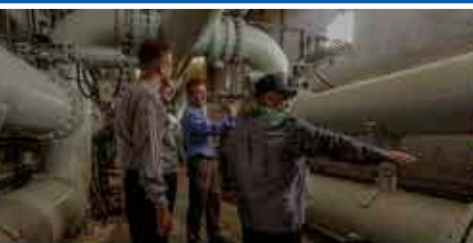


Water and Wastewater System Schedules of Rates and Charges, Capacity Charges, and Other Fees *as of July 12, 2017*



Photos on cover:

Examples of EBMUD's vast operations such as water storage, treatment and distribution, wastewater treatment plant energy, fire suppression programs, and staff that provide service around the clock supporting watershed management, water sampling/testing, pipeline maintenance/repairs, and customer service.

**WATER AND WASTEWATER SYSTEM
SCHEDULES OF RATES AND CHARGES,
CAPACITY CHARGES, AND OTHER FEES**

As of July 12, 2017

*East Bay Municipal Utility District
Oakland, California*

**SCHEDULE OF RATES, CHARGES AND FEES TO CUSTOMERS
OF THE EAST BAY MUNICIPAL UTILITY DISTRICT
As of July 12, 2017**

TABLE OF CONTENTS

INTRODUCTION

SCHEDULE OF RATES, CHARGES AND FEES

WATER SYSTEM

<u>Schedule</u>	<u>Page</u>
A Rate Schedule for Water Service	1-A
One Month Billing	1-A, B
Two Month Billing	1-C, D
Exceptions to Two Month Billing	1-E
Private Fire Services	1-E, F
Elevation Surcharge	1-F
B Account Establishment Charge	2
C Charges for Special Services	3-A
Meter Testing	3-A
Service Interruption	3-A
Returned Payment Charge	3-A
Processing Fees for Delinquent Charge Collection	3-B
Wasteful Use Charge	3-B
Flow-Restrictor Installation	3-B, C
Notice of Wasteful Use and Flow-Restrictor Charges	3-C
Backflow Device Annual Certification Charge	3-C
Backflow Device Violation	3-D
Late Payment Penalty and Interest	3-D
Processing Fee for Intervening Water Service Agreement	3-D
Service Trip Charge	3-D
Public Hydrant Meter Account Establishment Charges	3-E
Public Hydrant Meter Account Site Visit Charge	3-E
D Water Service Installation Charges	4-A
Installing a Service	4-A, B, C

**SCHEDULE OF RATES, CHARGES AND FEES TO CUSTOMERS
OF THE EAST BAY MUNICIPAL UTILITY DISTRICT
As of July 12, 2017**

TABLE OF CONTENTS

WATER SYSTEM

<u>Schedule</u>		<u>Page</u>
D	Water Service Installation Charges (Continued)	
	Cost of Increasing Meter Size	4-C, D
	Cost of Reducing Service Size	4-D
	Relocating an Existing Service	4-E
	Resetting or Replacing a Meter	4-E
	Conversion of Individual Service to Branch Service	4-F
	Service Eliminations	4-F
	Installation or Other Work Under Unusual Conditions	4-F
E	Private Fire Service Installation Charges	5-A
	Installing a Private Fire Service	5-A
	Installation Under Unusual Conditions	5-A
F	Public Fire Hydrant Installation Charges	6-A
	Hydrant Installation by the District	6-A
	Hydrant Installations by Applicant on	6-A
	Applicant-Installed Main Extensions	
	Hydrant Removal	6-A
	Installation of a Fire Hydrant at a Location Where	6-A
	There is Existing Fire Hydrant Coverage	
	Relocation of a Fire Hydrant	6-A
	Setback/Offset of a Fire Hydrant	6-B
	Replacement of a Hydrant Body	6-B
	Installation Under Unusual Conditions	6-B
G	Water Main Extension Charges	7-A
	District-Installed Mains	7-A
	District-Installed Two-Inch Mains	7-A
	District-Installed Six-Inch and Eight-Inch Mains	7-A, B
	Applicant-Installed Mains	7-B, C
H	Standard Participation Charge	8-A
I	Rescinded 07/01/88	

**SCHEDULE OF RATES, CHARGES AND FEES TO CUSTOMERS
OF THE EAST BAY MUNICIPAL UTILITY DISTRICT
As of July 12, 2017**

TABLE OF CONTENTS

WATER SYSTEM

<u>Schedule</u>	<u>Page</u>
J System Capacity Charge	10-A
SCC for Standard Service	10-A
Non-Residential Service Connections (dollars per connection)	10-A
Single Family Service Connections (dollars per connection)	10-A
SCC for Larger Meters	10-B
SCC for Standard Service to Multi-Family Premises	10-C
Separate SCC for Standard Service for Additional Regions	10-D
Non-Residential Water Service	10-D
Single Family Residential Water Service	10-D
SCC for Larger Meters	10-E
Separate SCC for Standard Service to Multi-Family Premises	10-E, F
Low Pressure Service	10-F
Combination Standard and Fire Service	10-F
Fire Services and Standby Services	10-F
Additional Water Use on Premises Receiving Service	10-G
Credit for Existing Services	10-G
Temporary Construction Service	10-H
Required Separate Irrigation Meter for Single Family Premises	10-H
Nonpotable Water Service	10-H
Dual Standard Services	10-H
Adjustment of SCC for Water-Conserving Landscaping on Publicly-Owned Property	10-I
K Charges for Annexation	11-A
L Drought Surcharge Rate Schedule for Water Service	12-A
M Rate Schedule for Water Service Estimate Application Fees	13-A
Schedule of Charges	13-A, B
Conditions of Application Fee	13-B

**SCHEDULE OF RATES, CHARGES AND FEES TO CUSTOMERS
OF THE EAST BAY MUNICIPAL UTILITY DISTRICT
As of July 12, 2017**

TABLE OF CONTENTS

WATER SYSTEM

<u>Schedule</u>	<u>Page</u>
N Water Demand Mitigation Fees	14-A
Water Demand Mitigation for "The Meadows" Territory	14-A, B
Water Demand Mitigation for "The Wendt Ranch" Territory	14-B, C
Water Use Offset Fees for the Wiedemann Ranch	14-C
Development	
Additional Water Use Offset Fees for the Wiedemann	14-D
Ranch Development	
Water Demand Mitigation Fees for Camino Tassajara	14-E, F, G
Integrated Project	
Water Demand Mitigation for Gayle Ranch Phase 2	14-H, I
Subdivision 9134	

WASTEWATER SYSTEM

A Rates for Treatment Service	1-A
Unit Treatment Rates	1-A
Residential Monthly Charges	1-A
Non-Residential Charges	1-A, B, C
B Wet Weather Facilities Charge	2-A
C Industrial Permit Fees	3-A
D Other Fees	4-A
E Testing Fees	5-A
F Rates for Resource Recovery Waste Treatment	6-A
G Capacity Fees	7-A, B, C
H Wastewater Interceptor Connection Review and Inspection Fee	8-A

OTHER DISTRICT FEES

Real Property Use Application Fees	1
Public Records Act Fee Schedule and District Publications Fees	1-8
Recreation Use Fees for July – December 2017	1-20
Recreation Use Fees for January – June 2018	1-21

EAST BAY MUNICIPAL UTILITY DISTRICT

INTRODUCTION

This document contains all of the Water and Wastewater System Schedules of Rates and Charges, Capacity Charges, and Other Fees that are in effect for fiscal year 2018 and their effective dates.

Most recreation fee schedules are adjusted on a calendar year basis, and are shown effective for July – December 2017 and January – December 2018. Camanche Hills Hunting Preserve fees are effective October 1, 2017 – September 30, 2018.

Included also are the Water System rates for:

- water service;
- drought surcharges;
- account establishment;
- special services such as meter testing and service interruption;
- charges for water service installation;
- private fire service installation;
- public fire hydrant installation;
- water main extension; and
- system capacity charges.

Also included are the Wastewater System rates for:

- treatment service;
- wet weather facilities charge;
- laboratory charges;
- permit fees; and
- capacity fees.

Other District fees included are:

- real property use application; and
- duplication of records fees.

All District rates, charges and fees that are in effect regardless of the type, date of origin or last revision are included in this report.

**Water System Rates,
Charges and Fees**

SCHEDULES OF RATES, CHARGES AND FEES

FY18

Water System

Schedule A – Rate Schedule for Water Service

Schedule B – Account Establishment Charge

Schedule C – Charges for Special Services

Schedule D – Water Service Installation Charges

Schedule E – Private Fire Service Installation Charges

Schedule F – Public Fire Hydrant Installation Charges

Schedule G – Water Main Extension Charges

Schedule H – Standard Participation Charge (SPC)

Schedule J – System Capacity Charge (SCC)

Schedule K – Charges for Annexation

Schedule L – Drought Surcharge Rate Schedule for Water Service

Schedule M – Water Service Estimate Application Fees

Schedule N – Water Demand Mitigation Fees

Schedule A

Rate Schedule for Water Service



SCHEDULE A

RATE SCHEDULE FOR WATER SERVICE

A. ONE MONTH BILLING

Bills for all metered services shall consist of:

FIRST – A WATER SERVICE CHARGE based on the size of a standard meter:

METER SIZE	SERVICE CHARGE AMOUNT
5/8 and 3/4 inch meters	\$22.60
1 inch meter	34.13
1-1/2 inch meter	62.98
2 inch meter	97.58
3 inch meter	189.87
4 inch meter	293.70
6 inch meter	582.05
8 inch meter	928.11
10 inch meter	1,331.83
12 inch meter	1,850.94
14 inch meter	2,370.00
16 inch meter	3,004.44
18 inch meter	3,638.86

The service charge for a special type of meter or for a battery of meters installed on one service in lieu of one meter will be based on the size of a single standard meter of equivalent capacity as determined by the District.

Effective July 1, 1997, when a meter larger than 4 inches is required for a single-family residential customer to maintain adequate water pressure, the maximum service charge amount shall be set at the 4-inch meter level.



**SCHEDULE OF RATES AND CHARGES TO CUSTOMERS
OF THE EAST BAY MUNICIPAL UTILITY DISTRICT**

PAGE NUMBER

1-B

EFFECTIVE

07/12/17

SCHEDULE A

**RATE SCHEDULE FOR WATER SERVICE
(Continued)**

A. ONE MONTH BILLING (Continued)

SECOND – A WATER FLOW CHARGE FOR WATER DELIVERED based on one month meter readings for all water delivered per 100 cu. ft.:

<u>Potable Water Service</u>	WATER FLOW CHARGE PER 100 CU. FT.
Single Family Residential Accounts:	
For the first 172 gpd	\$3.45
For all water used in excess of 172 gpd, up to 393 gpd	4.74
For all water used in excess of 393 gpd	6.27
Multiple Family Residential Accounts:	
For all water used	4.87
All Other Water Use:	
For all water used	4.85

All individually metered multi-family dwelling units or individually metered mobile home residential units that receive District service shall be billed at the single family residential rate.

<u>Nonpotable/Recycled Water Service</u>	WATER FLOW CHARGE PER 100 CU. FT.
For all water used	\$3.78



SCHEDULE A

**RATE SCHEDULE FOR WATER SERVICE
(Continued)**

B. TWO MONTH BILLING

Bills for all metered services shall consist of:

FIRST – A WATER SERVICE CHARGE based on the size of a standard meter:

METER SIZE	SERVICE CHARGE AMOUNT
5/8 and 3/4 inch meters	\$45.20
1 inch meter	68.26
1-1/2 inch meter	125.96
2 inch meter	195.16
3 inch meter	379.74
4 inch meter	587.40
6 inch meter	1,164.10
8 inch meter	1,856.22
10 inch meter	2,663.66
12 inch meter	3,701.88
14 inch meter	4,740.00
16 inch meter	6,008.88
18 inch meter	7,277.72

The water service charge for a special type of meter or for a battery of meters installed on one service in lieu of one meter will be based on the size of a single standard meter of equivalent capacity as determined by the District.

Effective July 1, 1997, when a meter larger than 4 inches is required for a single-family residential customer to maintain adequate water pressure, the maximum service charge amount shall be set at the 4-inch meter level.



**SCHEDULE OF RATES AND CHARGES TO CUSTOMERS
OF THE EAST BAY MUNICIPAL UTILITY DISTRICT**

PAGE NUMBER

1-D

EFFECTIVE

07/12/17

SCHEDULE A

**RATE SCHEDULE FOR WATER SERVICE
(Continued)**

B. TWO MONTH BILLING (Continued)

SECOND – A WATER FLOW CHARGE FOR WATER DELIVERED based on two month meter readings for all water delivered per 100 cu. ft.

<u>Potable Water Service</u>	WATER FLOW CHARGE PER 100 CU. FT.
Single Family Residential Accounts:	
For the first 172 gpd	\$3.45
For all water used in excess of 172 gpd, up to 393 gpd	4.74
For all water used in excess of 393 gpd	6.27
Multiple Family Residential Accounts:	
For all water used	4.87
All Other Water Use:	
For all water used	4.85

All individually metered multi-family dwelling units or individually metered mobile home residential units that receive District service shall be billed at the single family residential rate.

<u>Nonpotable/Recycled Water Service</u>	WATER FLOW CHARGE PER 100 CU. FT.
For all water used	\$3.78



SCHEDULE A

**RATE SCHEDULE FOR WATER SERVICE
(Continued)**

C. EXCEPTIONS TO TWO MONTH BILLING

Except as provided below, customer accounts shall be subject to bi-monthly meter reading and customer billing schedules.

- Accounts for which the average monthly bill is estimated to exceed \$1,500; such account will be billed monthly.
- Accounts for which there are reasonable and justifiable customer requests for monthly billing.
- Accounts for which the average monthly bill is estimated to be between \$100 and \$1,500, and the customer service manager recommends monthly billing based on an evaluation of credit and/or collection problems.

D. PRIVATE FIRE SERVICES

Effective July 1, 2005, the rates for Private Fire Services shall consist of:

FIRST – A MONTHLY SERVICE CHARGE based on the size of a standard meter:

METER SIZE	SERVICE CHARGE AMOUNT
5/8 and 3/4 inch meters	\$12.03
1 inch meter	16.52
1-1/2 inch meter	27.71
2 inch meter	41.14
3 inch meter	76.99
4 inch meter	117.29
6 inch meter	229.28
8 inch meter	363.66
10 inch meter	520.43
12 inch meter	721.99
14 inch meter	923.57
16 inch meter	1,169.95
18 inch meter	1,416.31



SCHEDULE A

**RATE SCHEDULE FOR WATER SERVICE
(Continued)**

D. PRIVATE FIRE SERVICES (Continued)

Effective July 1, 1997, when a meter larger than 4 inches is required for a single-family residential customer to maintain adequate water pressure, the maximum service charge amount shall be set at the 4-inch meter level.

SECOND – A WATER FLOW CHARGE FOR WATER DELIVERED based on two-month meter readings for all water delivered per 100 cu. ft.:

There shall be no charge for water used through such services extinguishing accidental fires, but any water lost through leakage or used in violation of the District's Regulations shall be paid for at the rate for general use, and may be subject to a penalty as may be established by the District.

E. ELEVATION SURCHARGE

Elevation Designator	AMOUNT PER 100 CU. FT.
0 and 1	\$0.00
2 through 5	0.70
6 and greater	1.45

The Elevation surcharge is determined by the pressure zone in which the service connection is located. Pressure zones are identified by designations that include an elevation Designator.

Schedule B

Account Establishment Charge



SCHEDULE B

ACCOUNT ESTABLISHMENT CHARGE

The charge for establishing a new account or the transfer of an account for a customer moving from one address to another is \$54.00 with the following exceptions:

- Customers in the Customer Assistance Program shall be charged \$27.00.
- Landlords requiring temporary water service for a period not to exceed 60 days shall be charged \$26.00, with the balance of the account establishment charge billed for water service that exceeds 60 days.
- There will be no transfer fee to change the name of an account when the responsible party is a landlord who has signed an intervening water service agreement.
- There will be no transfer fee to change the name of an account when the same person or entity is to remain responsible.
- Upon completion of the on-line account establishment system, the charge for establishing a new account or the transfer of an account moving from one address to another on EBMUD's website over the Internet for a single family residence customer is \$38.00.

Schedule C

Charges for Special Services



SCHEDULE C

CHARGES FOR SPECIAL SERVICES

A. METER TESTING

Charges for meter testing will be in accordance with the following schedule:

SIZE OF METER	TESTING CHARGES
5/8", 3/4", and 1"	\$60.00
1-1/2" and 2"	\$60.00 On Site \$135.00 Pull/Test
3" and larger	\$269.00 On Site Actual Cost Pull and Test

B. SERVICE INTERRUPTION

The charge for shutting off water service due to non-payment
of a water bill is.....\$46.00

The charge for restoring service after payment has been received
during regular office hours is.....\$46.00

The charge for restoring service between 5 p.m. and 8 a.m. or
on Saturday, Sunday or on a holiday is.....\$63.00

A service trip charge of \$46.00 shall be paid in the event of the following occurrences in the field: 1) payment collection; 2) payment extension; and 3) any additional field stops to shut off service beyond the initial service interruption, including EBMUD locking the meter if the customer self-restores water service prior to making payment. (See Section M.)

An additional charge to lock or plug the meter due to non-payment or
unauthorized water use is

S-Lock.....	\$59.00
Plug.....	\$402.00

C. RETURNED PAYMENT CHARGE

A charge of \$25.00 shall be paid for each check or electronic transaction received as
payment to the District that is returned unpaid from a financial institution.



SCHEDULE C

**CHARGES FOR SPECIAL SERVICES
(Continued)**

**D. PROCESSING FEES FOR DELINQUENT CHARGE COLLECTION THROUGH LIENS
AND PROPERTY TAX BILLS ON MULTI-FAMILY RESIDENTIAL ACCOUNTS**

For multi-family residential accounts, the District may place liens on parcels with unpaid charges and collect unpaid amounts on parcels' property tax bills. Multi-family residential accounts are any residential accounts where a water meter serves two or more dwelling units.

- | | |
|--|---|
| 1. Lien Filing Fee | \$167 per Lien |
| 2. Lien Removal Fee | \$152 (in Alameda County) and \$144 (in Contra Costa County) for first lien removed

\$59 (in Alameda County) and \$51 (in Contra Costa County) for each additional lien removed at the same time |
| 3. Property Tax Transfer Fee
Unpaid Charges with Liens Recorded | \$26 plus county auditor's fee (1.7% of collected amount for Alameda County; \$6 per parcel for Contra Costa County) |

E. WASTEFUL USE CHARGE

A charge of \$46.00 shall be paid to cover the monitoring costs incurred by the District if, after written notification, excessive water use is not curtailed.

F. FLOW-RESTRICTOR INSTALLATION

The charge for District installation of a flow-restricting device on any service that continues excessive water use, after written notification, will be in accordance with the following schedule:

1. On services two-inches and smaller -

5/8" and 3/4"	\$115.00
1"	\$115.00
1-1/2"	\$248.00
2"	\$248.00



SCHEDULE C

CHARGES FOR SPECIAL SERVICES
(Continued)

**F. FLOW-RESTRICTOR INSTALLATION
(Continued)**

2. All others -

The charges for installing flow-restricting devices on water services, other than those in the above schedule, shall be the actual cost of installing the device, as determined by the District, including engineering, equipment, material, labor and related overhead expenses.

G. NOTICE OF WASTEFUL USE AND FLOW-RESTRICTOR CHARGES

For the purposes of Sections E and F above, written notification shall:

1. Specify the date by which excessive use must be curtailed to avoid further enforcement action; and
2. Be sent by certified mail (return receipt requested) or by other written means which would be sufficient for obtaining personal service in a legal proceeding.

H. RESCINDED 12/10/96

I. BACKFLOW DEVICE ANNUAL CERTIFICATION CHARGE

Where it is probable that a pollutant, contaminant, system or plumbing hazard may be created by a water user, or where the water system is unstable and cross-connections may be installed or reinstalled, an approved backflow prevention device of the proper type is required for all premises except for conforming single-family premises at the customer's expense. See Section 26 of the District's Regulations Governing Water Service.

1. The charge for administering the Backflow Program
Certification for all specified accounts
(annually).....\$54.00
2. The charge for District staff to conduct a *Change of Responsible Party* or *Change of Use Survey* or to respond to a commercial customer's request for a backflow/cross connection survey, an initial or follow-up backflow inspection.....\$124.00/hr.
3. The charge for backflow testers to be placed on the District's list of certified testers.....\$151.00



SCHEDULE C

**CHARGES FOR SPECIAL SERVICES
(Continued)**

J. BACKFLOW DEVICE VIOLATION

For those customers where the service has been terminated for failure to meet the District's Backflow Program requirements, a charge will be made to cover the District's costs pursuant to the termination and restoration of service.....\$479.00

K. LATE PAYMENT PENALTY AND INTEREST

For those customers with outstanding overdue balances exceeding \$10 at billing, a charge equivalent to 1.5% of the overdue balance (minimum charge \$1) will be made to recover foregone interest on District money, and the District's costs to process overdue accounts. Customers in the Customer Assistance Program shall be exempt from the late payment penalty and interest.

L. PROCESSING FEE FOR INTERVENING WATER SERVICE AGREEMENT

The charge for the District to process an intervening water service agreement for a participating landlord in the District's automated landlord sign-on service is.....\$55.00

Requests to modify intervening water service agreement property account information must be submitted in writing and can be dropped off, mailed or faxed to a District business office.

The charge for each written request to modify the original intervening water service agreement by adding to or deleting property account information from the original agreement is.....\$55.00

M. SERVICE TRIP CHARGE

The charge for District staff to perform special services for customers is.....\$46.00

The charge shall be applied for, but is not limited to the following:

1. payment collection in the field;
2. payment extension in the field;
3. additional field stops beyond the initial service interruption to shut off service due to non-payment, including a field stop to lock the meter if the customer self-restores water service prior to making payment;
4. follow-up site visits to customers who have not complied after the District's notification to correct an obstructed meter condition; and
5. field inspections conducted at the customer's request.



SCHEDULE C

**CHARGES FOR SPECIAL SERVICES
(Continued)**

N. PUBLIC HYDRANT METER ACCOUNT ESTABLISHMENT CHARGES

Customers can request a 3-inch hydrant meter that can be hooked up to a public fire hydrant to measure water use at a property site. Customers are required to: 1) provide hydrant meter readings every two months, within 2 weeks of the meter read due date; 2) return hydrant meter equipment within one month following a meter use period; and 3) renew the hydrant meter permit and exchange the hydrant meter equipment within eleven months from the date of issuance, if continued use is desired.

The charge to establish water service
for a hydrant meter is.....\$111.00

The charge to renew a hydrant meter account
at the end of a 12-month period is.....\$111.00

If a field stop is required to establish a new account, a \$222 site visit charge shall be paid in addition to the \$111 account establishment charge. (See Section O.)

O. PUBLIC HYDRANT METER ACCOUNT SITE VISIT CHARGE

The charge for a Field Services Representative to conduct a hydrant
meter site visit to perform special services for customers is.....\$222.00

The charge shall be applied for, but is not limited to the following:

1. reading hydrant meters for which the two-month reading was not submitted by the customer;
2. retrieving hydrant meter equipment from a customer site;
3. delivering hydrant meter equipment to a customer; and
4. establishing or renewing a hydrant meter account in the field.

Schedule D

Water Service Installation Charges



SCHEDULE D

WATER SERVICE INSTALLATION CHARGES

A. INSTALLING A SERVICE

The charge for installing a water service, other than a private fire service, will be in accordance with the following schedule:

1. FOUR INCHES AND SMALLER*

a. Regular Services (1 meter per lateral)

SIZE	INSTALLED IN PAVED CONDITIONS	INSTALLED IN UNPAVED CONDITIONS
5/8", 3/4" & 1"	\$6,193	\$1,169
1-1/2"	6,379	3,148
2"	7,301	3,468
3"***	23,892	21,504
4"***	25,885	23,297

Cost to install services 6" and larger will be calculated on a case-by-case basis.

b. Lateral Sizing for Fire Flow Capacity

Where local and State regulations require that taps and laterals for new regular service be sized to provide for fire flow capacity, the following charges shall apply:

Basic charge to provide a 1-1/2" lateral and a 1" meter, to be paid at time tap and lateral are installed:

a. Installations in unpaved conditions	\$3,048
b. Installations in paved conditions	6,255

* If the District determines that an ERT (Encoder, Receiver, Transmitter) meter is required, there shall be an additional charge of \$200.

***Requires steel pipes



SCHEDULE D

**WATER SERVICE INSTALLATION CHARGES
(Continued)**

A. INSTALLING A SERVICE (Continued)

c. Branch Services (2 or more meters per lateral)

METER SIZE	# OF METERS	INSTALLED IN PAVED CONDITIONS	INSTALLED IN UNPAVED CONDITIONS
5/8 inch Meters	2	\$6,654	\$3,421
	3	6,925	3,692
	4	7,198	3,967
	5	8,393	4,559
	6	8,665	4,832
	7	8,938	5,104
	8	9,210	5,377
1 inch Meters	2	6,871	3,642
	3	7,258	4,027
	4	7,640	4,408

d. Adjustment for Applicant Assisted Service Installations

Applicants requesting installation of at least 15 service laterals may choose to provide their own trenching and backfilling and be eligible to receive a refund of up to \$311.00 per service lateral installed provided that the applicant:

- (i) pays the appropriate charges for each service as specified in sections (a) or (b) above.
- (ii) clears the construction site of obstructing materials and equipment.
- (iii) excavates a minimum of 15 service laterals ahead of District crews.
- (iv) hauls sand and select backfill to the construction site for use by district crews in supporting the service lateral and for applicant backfilling of trenches.
- (v) backfills and compacts the trenches after District crews have installed and properly secured the service lateral.
- (vi) reimburses the District for (1) unproductive crew standby due to applicant's failure to prepare the site or excavate trenches in advance; (2) District costs to repair damage done by applicant's trenching operation.



SCHEDULE D

WATER SERVICE INSTALLATION CHARGES
(Continued)

A. INSTALLING A SERVICE (Continued)

e. Tract Service Property Line Installation

If the customer elects not to dig service lateral trenches, but does comply with the guidelines of two services in one trench at property line, EBMUD will reimburse the customer \$156.00 for each service lateral.

- f. The service lateral reimbursements referenced above do not apply to nonpotable water service. Conditions for nonpotable water service will be determined in accordance with the water service application and permit provisions in Sections 3, 4, and 30 of the Regulations Governing Water Service.

2. ALL OTHERS

The charge for installing all water services other than those in the above schedule shall be the actual cost of installing the service, as determined by the District, including engineering, equipment, material, labor and related overhead expenses.

B. COST OF INCREASING METER SIZE (Up to available capacity)

1" Tap and Lateral \$516

(Additional charge of \$448 if concrete replacement required)

1-1/2" Tap and Lateral*

(No concrete replacement required)

5/8"	to	3/4"	\$600
5/8"	to	1"	600
3/4"	to	1"	600
5/8"	to	1-1/2"	761
3/4"	to	1-1/2"	761
1"	to	1-1/2"	761

2" Tap and Lateral*

(No concrete replacement required)

5/8"	to	3/4"	\$600
5/8"	to	1"	600
3/4"	to	1"	600
5/8"	to	1-1/2"	1,127
1"	to	1-1/2"	1,127
*5/8"	to	2"	1,127
*3/4"	to	2"	1,127
*1"	to	2"	1,127
1-1/2"	to	2"	1,127

* Additional charge of \$524 if concrete replacement required.



SCHEDULE D

WATER SERVICE INSTALLATION CHARGES
(Continued)

B. COST OF INCREASING METER SIZE (Continued)

4" Tap and Lateral (Additional charge of \$448 if concrete replacement required)

5/8"	to	3/4"	\$600
5/8"	to	1"	600
3/4"	to	1"	600
5/8"	to	1-1/2"	1,127
3/4"	to	1-1/2"	1,127
1"	to	1-1/2"	1,127
5/8"	to	2"	1,127
3/4"	to	2"	1,127
1"	to	2"	1,127
1-1/2"	to	2"	1,127

4" Tap and Lateral (Additional charge of \$557 if concrete replacement required)

5/8"	to	3"	\$7,894
3/4"	to	3"	7,894
1"	to	3"	7,894
1-1/2"	to	3"	7,894
2"	to	3"	7,894
5/8"	to	4"	7,894
3/4"	to	4"	7,894
1"	to	4"	7,894
1-1/2"	to	4"	8,790
2"	to	4"	8,790
3"	to	4"	8,790

C. COST OF REDUCING SERVICE SIZE (Additional charge of \$557 if concrete replacement required)

1"	to	3/4" or 5/8"	\$370
1-1/2"	to	1", 3/4" or 5/8"	511
2"	to	1-1/2"	1,418
2"	to	1", 3/4" or 5/8"	511
3"	to	2"	2,281
3"	to	1-1/2"	2,258
3"	to	1", 3/4" or 5/8"	1,937
4"	to	3"	7,714
4"	to	2"	2,252
4"	to	1-1/2"	2,252
4"	to	1", 3/4", or 5/8"	1,937



SCHEDULE D

**WATER SERVICE INSTALLATION CHARGES
(Continued)**

D. RELOCATING AN EXISTING SERVICE

1. To relocate an existing service perpendicular to the curb line or a distance not exceeding 5 feet parallel to the curb line, a charge will be made equal to 20% of the Installation Charge for the corresponding service size.
2. To relocate an existing service a distance exceeding 5 feet parallel to the curb line, a charge will be made in accordance with the following schedule plus the cost of eliminating old service connection:

a. FOUR INCHES AND SMALLER

SIZE	RELOCATION CHARGE
5/8", 3/4" & 1"	\$6,193
1-1/2"	6,379
2"	7,301
3"	23,892
4"	25,885

b. SIX INCHES AND LARGER

Total actual cost of a new service installation, plus cost of eliminating old service connection, less salvage value of materials recovered.

E. RESETTling OR REPLACING A METER

There will be a charge equivalent to 5% of the water service installation charge for resetting a meter on an existing service connection.

There will be a charge equivalent to 5% of the water service installation charge for replacing a meter when applicants lose or damage meters when constructing new developments.



SCHEDULE D

**WATER SERVICE INSTALLATION CHARGES
(Continued)**

F. CONVERSION OF INDIVIDUAL SERVICE TO BRANCH SERVICE

(Multi-metering, when feasible)

1" tap and lateral to 2-5/8" meter manifold	\$507	(Additional charge of \$448 if concrete replacement required)
1.5" tap and lateral to 3 or 4-5/8" meters	\$1,012	(Additional charge of \$597 if concrete replacement required)
1.5" tap and lateral to 2-1" meter manifold	\$586	(Additional charge of \$597 if concrete replacement required)
2" tap and lateral to 5/8" meter manifold		
5 and 6 meters	\$1,553	(Additional charge of \$597 if concrete replacement required)
7 and 8 meters	1,985	(Additional charge of \$748 if concrete replacement required)
4" tap and lateral to a 5/8" meter manifold \$1,590 plus \$252 per meter requested (Additional charge of \$748 if concrete replacement required)		

G. SERVICE ELIMINATIONS

3/4"	to	2"	\$1,463	(Additional charge of \$448 if concrete replacement required)
3"	to	12"	3,748	(Additional charge of \$597 if concrete replacement required)

H. INSTALLATION OR OTHER WORK UNDER UNUSUAL CONDITIONS

The above charges apply to all installation charges for water services four inches and smaller except when there are unusual or special conditions which, in the opinion of the District, would result in the need for additional services and materials, including added testing and inspection, changes due to project revisions, property rights evaluation, site conditions or contaminated soil, and any construction by District forces to complete the installation. In such cases, the charge will be based on the District's actual cost of all engineering, material, equipment, labor and related overhead expenses incidental to the installation.

Schedule E

Private Fire Service Installation Charges



SCHEDULE E

PRIVATE FIRE SERVICE INSTALLATION CHARGES

A. INSTALLING A PRIVATE FIRE SERVICE

The charge for installing a private fire service will be in accordance with the following schedule:

SIZE	INSTALLED IN PAVED CONDITIONS	INSTALLED IN UNPAVED CONDITIONS
1-1/2"	\$6,379	\$3,148
2"	7,301	3,468
4"	19,554	17,554
6"	20,830	18,830
8"	28,893	26,893

Cost to install 10" and larger will be calculated on a case-by-case basis.

The charges for four-inch and larger includes cost of detector check meter, meter box, connection to existing mains and fittings.

B. INSTALLATION UNDER UNUSUAL CONDITIONS

1. The above charges apply to all installation charges for private fire services except when there are unusual or special conditions which, in the opinion of the District, would result in the need for additional services and materials, including added testing and inspection, changes due to project revisions, property rights evaluation, site conditions or contaminated soil, and any construction by District forces to complete the installation. In such cases, the charge will be based on the District's actual cost of all engineering, material, equipment, labor and related overhead expenses incidental to the installation.

Schedule F

Public Fire Hydrant Installation Charges



SCHEDULE F

PUBLIC FIRE HYDRANT INSTALLATION CHARGES

The following charges will be made for the installation, removal or relocation of a fire hydrant.

A. HYDRANT INSTALLATION BY THE DISTRICT

The charge for installation of a fire hydrant by the District on an existing main is \$13,796.

For hydrants installed by the District on/with new mains being installed by the District see Schedule G, Sections C.2 and C.3. For hydrants installed by applicant on/with new mains installed by the Applicant see Section B below.

B. HYDRANT INSTALLATIONS BY APPLICANT ON APPLICANT-INSTALLED MAIN EXTENSIONS

1. Basic charge for materials, engineering and inspection services for a 6-inch fire hydrant \$3,160.00
2. Material charge for services laterals..... \$16.00 per foot

NOTE: Applicants will not be permitted to install a fire hydrant on an existing main.

C. HYDRANT REMOVAL

1. The charge to remove a hydrant located in concrete sidewalk \$3,303.00
2. The charge to remove a hydrant located in dirt 2,938.00

D. INSTALLATION OF A FIRE HYDRANT AT A LOCATION WHERE THERE IS EXISTING FIRE HYDRANT COVERAGE

If a fire hydrant is ordered installed at or near a location where there is existing fire hydrant coverage, as a requirement precedent to installing the new fire hydrant, the District reserves the right to remove the existing fire hydrant and levy the charge for removal (Section C).

E. RELOCATION OF A FIRE HYDRANT

The charge for the relocation of a hydrant will be the charge for the hydrant removal (Section C) plus the charge for the installation of a new hydrant (Section A). No credit will be given for salvaged material unless the hydrant body is of the current design and can be reused, in which case a credit of \$475 will be allowed.



SCHEDULE F

**PUBLIC FIRE HYDRANT INSTALLATION CHARGES
(Continued)**

F. SETBACK/OFFSET OF A FIRE HYDRANT

Where the relocation of a fire hydrant does not require a new connection to the main, the charge is \$8,794. There is an additional charge of \$584 for concrete replacement.

G. REPLACEMENT OF A HYDRANT BODY

To replace an existing hydrant body with a MODEL-64 hydrant body, or equivalent, the following charges will be made:

1. If the existing hydrant body is a wet-barrel, aboveground
shutoff type, the replacement charge is..... \$1,518.00
2. If the existing hydrant body is a dry-barrel, underground
shutoff type, the replacement charge is..... 2,366.00

H. INSTALLATION UNDER UNUSUAL CONDITIONS

The above charges apply to all installation charges for fire hydrant installations except when there are unusual or special conditions which, in the opinion of the District, would result in the need for additional services and materials, including added testing and inspection, changes due to project revisions, property rights evaluation, site conditions or contaminated soil, and any construction by District forces to complete the installation. In such cases, the charge will be based on the District's actual cost of all engineering, material, equipment, labor and related expenses incidental to the installation.

Schedule G

Water Main Extension Charges



SCHEDULE G

WATER MAIN EXTENSION CHARGES

A. DISTRICT-INSTALLED MAINS

The charge for District-installed main extensions up to 1,000 feet shall be based on the standard charges as specified in Sections B and C below.

B. DISTRICT-INSTALLED TWO-INCH MAINS

The charge for District installation of two-inch mains in dirt and in paved streets, excluding any charges for water service connections consists of:

1. Basic installation charge of\$4,610.00
plus,
2. Linear foot charge of:
 - PVC pipe in dirt streets.....\$112.00 per foot
 - PVC pipe in paved streets.....183.00 per foot
 - Copper pipe in dirt streets130.00 per foot
 - Copper pipe in paved streets.....201.00 per foot

C. DISTRICT-INSTALLED SIX-INCH AND EIGHT-INCH MAINS

The charge for District installation of six-inch and eight-inch steel and PVC mains up to 1,000 feet, excluding any charges for water service connections, consists of:

1. Basic installation charge of.....\$4,610.00
plus,
2. Basic charge per fire hydrant installed:
 - In dirt\$9,656.00
 - In pavement.....11,038.00plus,
3. Linear foot Charge, for combined length of main extension and fire hydrant lateral of 0-1000 LF:
 - In Dirt Streets or Roads
 - PVC pipe\$167.00 per foot
 - Steel pipe.....202.00 per foot
 - In Paved Streets or Roads
 - PVC pipe\$249.00 per foot
 - Steel pipe.....277.00 per foot



SCHEDULE G

**WATER MAIN EXTENSION CHARGES
(Continued)**

- D.** The above charges apply to all District-installed mains except when there are unusual or special conditions which, in the opinion of the District, would result in the need for additional services and materials, including hydraulic analysis, property rights evaluation, site conditions or contaminated soil. In such cases, the additional charge will be based on the District's actual cost of all engineering, material, equipment, labor and related overhead expenses incidental to the installation.

E. APPLICANT-INSTALLED MAINS

The following charges apply to applicant-installed water main extensions under normal conditions as defined in the Regulations.

1. Charge for engineering, inspection, and certain pipeline materials, designated below for the installation of the required water mains by the applicant, excluding fire hydrants and water service connections (which are covered by Schedules D, E, and F):
 - a. Basic installation charge of \$4,184.00
plus,
Linear foot charge of:
6-inch diameter pipe \$34.00 per foot
8-inch diameter pipe 34.00 per foot
12-inch and larger diameter pipe See 7-C, #3
 - b. The charge to the applicant for District-supplied pipe and fittings will be the District's cost for these materials, at the time of delivery to the applicant, plus tax and shipping.
 - c. The above charges apply to all applicant-installed mains except when there are unusual or special conditions which, in the opinion of the District, would result in the need for additional services and materials, including added testing and inspection, changes due to project revisions, property rights evaluation, site conditions or contaminated soil, and any construction by District forces to complete the installation. In such cases, the additional charge will be based on the District's actual cost of all engineering, material, equipment, labor and related overhead expenses incidental to the installation.

In all cases the District will supply valves, valve pot covers, blowoffs, and minor appurtenances as identified by District-furnished drawings and specifications.



SCHEDULE G

WATER MAIN EXTENSION CHARGES
(Continued)

E. APPLICANT-INSTALLED MAINS (Continued)

2. Credits when pipe to be installed by the applicant is required by the District to be larger than the pipe size needed to serve the applicant.

3. Charges and Credits for Steel Pipe Other Than Eight-Inch

Charges for Applicant-installed mains other than eight-inch, credits (where applicable) to applicant for mains other than eight-inch, or applicant-installed District improvements in conjunction with applicant-installed main extensions will be based on a District engineering cost estimate.

Schedule H

Standard Participation Charge



SCHEDULE H

**STANDARD PARTICIPATION CHARGE
(SPC)**

A. The Standard Participation Charge for each standard service installed shall be:

Standard Participation Charge

Meter Size	Gravity Zone ¹	Pumped Zone ²
5/8" and 3/4"	\$8,560	\$10,620
1"	21,400	26,550
1-1/2"	42,800	53,100
2"	68,500	84,900
3"	136,900	169,900
4"	214,000	265,500

The Standard Participation Charge for each meter larger than four inches shall be determined on a case-by-case basis by the District, considering such factors as the projected demand which the service would impose on the District system, the maximum intermittent flow rate of the meter compared to a 5/8" meter, and whether the service is solely domestic or is combined with a fire service. In no event shall the standard participation charge for a meter larger than four inches be less than \$214,000 in gravity zones or \$265,500 in pumped zones.

¹This charge covers general water main oversizing and future water supply.

²This charge covers major facilities capacity, water main oversizing and future water supply.

Schedule J

System Capacity Charge



**SCHEDULE OF RATES AND CHARGES TO CUSTOMERS
OF THE EAST BAY MUNICIPAL UTILITY DISTRICT**

PAGE NUMBER

10-A

EFFECTIVE

08/14/17

SCHEDULE J

**SYSTEM CAPACITY CHARGE
(SCC)**

A. SCC FOR STANDARD SERVICE¹

1. Non-Residential Service Connections (dollars per connection)

METER SIZE (INCHES)	1	REGION 2	3
5/8	\$25,040	\$45,080	\$41,780
3/4	37,560	67,620	62,670
1	62,730	112,930	104,660
1-1/2	125,460	225,860	209,320

For service connections with larger meters see Sec. 3.

2. Single Family Service Connections (SCC)² (dollars per connection)

METER SIZE (INCHES)	1	REGION ³ 2	3
3/4	\$17,530	\$30,340	\$38,770
1	29,280	50,670	64,750
1-1/2	58,560	101,340	129,500

For service connections with larger meters see Sec. 3 below.

¹This charge covers the cost of System-wide Facilities Buy-in, Regional Facilities Buy-in and Future Water Supply.

²The SCC charged to the applicant will be based on the water meter size required to meet the indoor needs (excluding private fire service needs) and outdoor watering needs of the premises as determined solely by the District based on the plumbing code, the District's review, and water industry standards. The meter(s) that is installed may be larger than the meter size charged in the SCC fee if the service is combined with a private fire service or if a separate irrigation meter is required (See Sections D. Combined Standard and Fire Service and I. Required Separate Irrigation Meter for Single Family Premises).

³ REGION	GENERAL DESCRIPTION
1	Central Area (gravity zones West-of-Hills) El Sobrante and North (pumped zones)
2	South of El Sobrante to vicinity of Highway 24 (pumped zone) South from vicinity of Highway 24 (pumped zones) Castro Valley Area (pumped zones) North Oakland Hill Area (pumped zones, formerly 4A)
3	Orinda-Moraga-Lafayette Area (pumped zones) San Ramon Valley and Walnut Creek (pumped and gravity zones)



SCHEDULE J

SYSTEM CAPACITY CHARGE
(SCC)
(Continued)

3. SCC for Larger Meters

The SCC for service connections with meters larger than 1-1/2 inches shall be determined on a case-by-case basis by the District based on water use information furnished by the applicant and applying the same unit charge and criteria as apply to the SCC for smaller meters. The SCC will be calculated based on the unit charges for each of the four components listed below:

Component	Unit Charge (\$/100 gpd)
Post-2000 (Add'l Regions 3C & 3D only)	SCC Region Specific
Regional Facilities Buy-in	SCC Region Specific
System-wide Facilities Buy-in	\$2,109
Future Water Supply ¹	2,046

The unit charges for the components that are specific to a SCC Region are:

Unit Charge (\$/100gpd)		
Region	Post-2000 Component	Regional Facilities Buy-In Component
1	n/a	\$2,104
2	n/a	4,272
3	n/a	2,529
3C	\$6,960	1,897
3D	6,960	1,897

In no instance will the SCC for a meter larger than 1-1/2 inches be less than the 1-1/2 inch price from the appropriate Section 1 or 2, above.

The SCC will be determined by multiplying the sum of the unit charge of the four components by the water use information furnished by the applicant, rounded to three significant places.

If the District has determined, based on water use information furnished, that a meter larger than 1-1/2 inches is appropriate, the SCC calculated pursuant to this subdivision shall apply irrespective of the arrangement of water metering or meter size at the premises.

¹The Future Water Supply component for Region 3C is based on 1993 agreement (see Section B1).



SCHEDULE J

SYSTEM CAPACITY CHARGE
(SCC)
(Continued)

4. SCC for Standard Service to Multi-Family Premises

The System Capacity Charge for water service at multi-family premises shall be as listed below. For purposes of this Schedule J, "multi-family premises" shall mean premises with two or more attached or separate residential dwelling units, rental or owner-occupied, which is determined by the District to be a single premises for receiving water service.

	Multi-Family Premises Dollars per Dwelling Unit (DU)		
	REGION ¹		
	1	2	3
For each Dwelling Unit	\$10,200	\$14,160	\$13,300

¹Same regions as described in A.2.

The above SCC shall apply regardless of the arrangement of water metering or meter size at the premises; however, the District may limit the size and number of service connections to a combined capacity appropriate to the anticipated water use at the premises. No additional SCC shall be applicable for separate meters installed to provide irrigation for landscaping on the premises in the immediate area contiguous to the dwelling unit structures, provided such landscaped area is to be used exclusively by the residents. All other rates and charges shall be based on actual number and size of meters and does not apply to the requirements listed below.

An SCC shall be applicable for separate meters installed to serve other water uses in the vicinity of the multi-family premises, such as irrigation of open space areas, parks, roadway medians, golf courses, community clubhouse and recreational facilities, and areas designated for public use. The SCC shall be based on meter size as provided under A.1 above. If these other water uses are included in the water service connection to the multi-family premises, the District shall, for purposes of determining the applicable SCC, determine the equivalent meter size for these uses based on plumbing code and water industry standards, as if there were a separate service connection.



SCHEDULE J

SYSTEM CAPACITY CHARGE
(SCC)
(Continued)

B. SEPARATE SCC FOR STANDARD SERVICE FOR ADDITIONAL REGIONS¹

The System Capacity Charge for non-residential and single family residential water service at premises other than multi-family premises shall be as follows (dollars per connection):

1. Non-residential water service at premises other than multi-family premises shall be as follows (dollars per connections)

METER SIZE (INCHES)	ADDITIONAL REGION ²	
	3C ³	3-D
5/8	n/a	\$100,850
3/4	n/a	151,280
1	n/a	252,640
1-1/2	n/a	505,280

For service connections with larger meters see Sec. 3 below.

2. Single-Family service connections shall be as follows (dollars per connections)

METER SIZE (INCHES)	ADDITIONAL REGION ²	
	3C ³	3-D
3/4	\$89,640	\$100,850
1	149,700	168,420
1-1/2	299,400	336,840

For service connections with larger meters see Sec. 3 below.

¹This charge covers the cost of System-wide Facilities Buy-In, Regional Facilities Buy-In and Future Water Supply. The Additional Regions are low-density, residential in nature. It is not anticipated that meters larger than ¾ -inch (excluding fire flow requirements) will be installed in these Regions.

²ADDITIONAL REGION GENERAL DESCRIPTION
3-C South of Norris Canyon Road (pumped zones)
3-D South of Norris Canyon Road outside Wiedemann Ranch (pumped zone)

³The Future Water Supply component of the SCC for Region 3C is set by the July 20, 1993 Wiedemann Agreement, indexed to the U.S. City Average of the Consumer Price Index and used by EBMUD to fund conservation programs. The total Future Water Supply component of the SCC for the common areas in Region 3C shall be paid as a condition for the issuance of the first water meter for the common area. The SCC for Non-Residential services (e.g., common area irrigation) shall be uniquely calculated in accordance with the Wiedemann Agreement.



SCHEDULE J

SYSTEM CAPACITY CHARGE
(SCC)
(Continued)

B. SEPARATE SCC FOR STANDARD SERVICE FOR ADDITIONAL REGIONS¹ (Continued)

3. SCC for Larger Meters

The SCC for service connections with meters larger than 1-1/2 inches shall be determined on a case-by-case basis by the District based on water use information furnished by the applicant and applying the same cost components and criteria as apply to the SCC for smaller meters. (See Section A.3)

4. Separate SCC for Standard Service to Multi-Family Premises

The System Capacity Charge for water service at multi-family premises shall be as listed below. For purposes of this Schedule J, "multi-family premises" shall mean premises with two or more attached or separate residential dwelling units, rental or owner-occupied, which is determined by the District to be a single premises for receiving water service.

Multi-Family Premises Dollars per Dwelling Unit		
	ADDITIONAL REGIONS ¹	
	3-C	3-D
For each Dwelling Unit	\$34,580	\$35,390

¹Same regions as described in B.1.



SCHEDULE J

**SYSTEM CAPACITY CHARGE
(SCC)
(Continued)**

B. SEPARATE SCC FOR STANDARD SERVICE FOR ADDITIONAL REGIONS¹ (Continued)

The above SCC shall apply regardless of the arrangement of water metering or meter size at the premises; however, the District may limit the size and number of service connections to a combined capacity appropriate to the anticipated water use at the premises. No additional SCC shall be applicable for separate meters installed to provide irrigation for landscaping on the premises in the immediate area contiguous to the dwelling unit structures, provided such landscaped area is to be used exclusively by the residents. All other rates and charges shall be based on actual number and size of meters and do not apply to the requirements listed below.

An SCC shall be applicable for separate meters installed to serve other water uses in the vicinity of the multi-family premises, such as irrigation of open space areas, parks, roadway medians, golf courses, community clubhouse and recreational facilities, and areas designated for public use. The SCC shall be based on meter size as provided under B.1 above. If these other water uses are included in the water service connection to the multi-family premises, the District shall, for purposes of determining the applicable SCC, determine the equivalent meter size for these uses based on plumbing code and water industry standards, as if there were a separate service connection.

C. LOW-PRESSURE SERVICE

Where a larger meter is installed because of low-pressure conditions, the applicable System Capacity Charge shall be determined on the basis of the size of the meter which would be required for a standard service as determined by the District based on plumbing code and water industry standards. All other rates and charges shall be based on actual meter size.

D. COMBINATION STANDARD AND FIRE SERVICE

Where a meter is installed to provide both standard service and a supply to a private fire protection system, at other than multi-family premises, the applicable System Capacity Charge shall be based on the meter size required for standard service exclusive of the capacity for supplying the fire protection system as determined by the District based on plumbing code, fire protection code and water industry standards. The installation charges shown in Schedule D and all other rates and charges pertaining to the service shall be based on the actual size of the meter that is installed.

E. FIRE SERVICES AND STANDBY SERVICES

For fire services and standby services (additional service connections for security of supply), there shall be no System Capacity Charges.

¹Same regions as described in B.1.



SCHEDULE J

**SYSTEM CAPACITY CHARGE
(SCC)
(Continued)**

F. ADDITIONAL WATER USE ON PREMISES RECEIVING SERVICE

The System Capacity Charge applicable to enlargement of an existing service at other than multi-family premises shall be based on the difference in the SCC for the new service size and the existing service size.

If additional dwelling units are constructed on premises subsequent to the installation of service and payment of an SCC under B.1, then the SCC applicable to each additional dwelling unit shall be immediately due and payable.

G. CREDIT FOR EXISTING SERVICES

Where one or more new services will replace one or more existing or prior services to a premises where an SCC was paid to initiate the water service, a credit will be given toward the new SCC based on the customer classification, meter size or water use information that was used to calculate the initial SCC payment (see Section A – SCC for Standard Service). For instances where the existing or prior services were installed prior to 1983 and no SCC was paid, the SCC credit for meter sizes under 2" will be based on Sections A.1 and A.2 - SCC for Standard Service. For existing or prior services with meter sizes 2" and greater where no SCC was paid, the annual average of the past ten years of water consumption will be used to determine the SCC credit, but in no instance will the credit be less than that of a 1.5" meter size for the customer classification listed in Sections A.1 and A.2 – SCC for Standard Service. No SCC credit will be given unless prior service to the premises is verified. If the SCC is paid with the service connection to be completed by meter installation at a later date, and existing service(s) are to remain in service until that time, the applicable credit for the existing service(s) will be in the form of a refund when the existing services are removed. The SCC credit cannot be applied to a standby meter, fire service meter, or in the case of a combination standard and fire service meter, the portion of the meter oversized for the private fire protection system. Where the initial SCC payment was made under Schedule J Section I Required Separate Irrigation Meter for Single Family Premises, the SCC credit cannot be applied to the separate irrigation meter without a SCC credit on the residential meter. The SCC credit for an existing service can only be applied to the premises where the existing service is located. "Premises" is defined in the Section 1 of the District's Regulations Governing Water Service.

For common area meters installed under the July 20, 1993 Wiedemann Agreement, credit toward a new SCC for these meters will be based on the actual SCC payment for each meter installed, not based on the size of the existing meter.



SCHEDULE J

SYSTEM CAPACITY CHARGE
(SCC)
(Continued)

H. TEMPORARY CONSTRUCTION SERVICE

A System Capacity Charge paid on a temporary construction service will be refunded if said service is removed within a 1-year period after installation.

I. REQUIRED SEPARATE IRRIGATION METER FOR SINGLE FAMILY PREMISES

If an irrigation meter is required for a single-family premises because the landscape exceeds the threshold for a dedicated irrigation meter in Section 31 of the Regulations, two meters will be installed – one for the indoor and private fire service (if applicable) needs of the building and a separate meter dedicated for irrigation. One single-family premises SCC shall be applicable based on the hydraulic capacity needed to serve the irrigation and indoor needs. The hydraulic capacity of the installed meter or meters will be equal to or exceed the hydraulic capacity of the meter size that was charged in the SCC fee. The installation charges shown in Schedule D and all other rates and charges pertaining to the service(s) based on the actual size of the meter(s) that are installed shall apply.

J. NONPOTABLE WATER SERVICE

1. Nonpotable Water Service Connections (dollars per connection)

METER SIZE (INCHES)	REGION		
	1	2	3
5/8	\$8,180	\$10,950	\$12,790
3/4	12,280	16,420	19,180
1	20,500	27,420	32,030
1-1/2	41,000	54,840	64,070

All SCC for nonpotable water service connections with meters larger than 1-1/2 inches shall be determined by applying the Future Water Supply Component unit charge to the defined projected water demand approved by the District. The SCC will not be less than the 1-1/2 inch meter charge from Section J.1, above.

K. DUAL STANDARD SERVICES

An SCC shall be applicable for separate meters installed to provide dual (potable and nonpotable) standard service, based on the meter size(s) for each service.



SCHEDULE J

**SYSTEM CAPACITY CHARGE
(SCC)
(Continued)**

L. ADJUSTMENT OF SCC FOR WATER-CONSERVING LANDSCAPING ON PUBLICLY OWNED PROPERTY

To further encourage water conservation, the SCC for a water service connection exclusively for irrigation of landscaping on property owned by a public agency may be reduced or not required based on long-term water service needs after an initial planting establishment period of not more than three years (the "initial period"); provided that (1) the landscape plan incorporates drought-tolerant and other low-water-use planting materials on a major part of the landscaped area, and (2) the long-term water need would result in replacement of the initial water meter with a smaller meter or water service would be discontinued and removed at the end of the initial period, as solely determined by the District.

A public agency applying for water service under such conditions shall submit a written request to the District prior to the time of payment of the SCC. The request shall set forth in detail the facts supporting an adjustment of the SCC, shall include information and plans clearly describing the planting materials and irrigation system, and shall include data and calculations clearly demonstrating the estimated initial and long-term water needs.

If the District determines that the SCC can be based on a smaller meter or discontinuation of service after the initial period, the public agency shall enter into a water service agreement which provides for (1) payment of the reduced SCC prior to installation of service; (2) verification of the long-term need at the end of the period; and (3) payment of the additional SCC required if the initial meter is not to be replaced, or the replacement meter is larger than initially determined, or water service is not discontinued and removed. If additional SCC payment is required, it shall be based on the charges in effect at the time of initial SCC payment, and shall be due and payable within 30 days of written notice from the District. The agreement shall be binding upon all subsequent owners of the property and shall be recorded.

Installation charges for the service connection shall be based on the meter size initially installed.

The above-mentioned SCC adjustments do not apply to nonpotable water service accounts.

Schedule K

Charges for Annexation



SCHEDULE K

CHARGES FOR ANNEXATION

The following charges for annexation of territory to the District shall apply for all annexations initiated with the District on or after May 1, 1979. These charges shall be paid by the Applicant at the time the proceedings are initiated, and prior to the installation of any facilities. The Applicant will also be subject to the Regulations Governing Water Service to Customers of the District and the Schedule of Rates and Charges, except as provided for herein.

The total charges to be paid shall be computed as follows:

1. For each annexation proceeding, the sum of \$1,060.00. However, if the District is required to conduct an annexation election or to provide environmental documentation such as a Negative Declaration or Environmental Impact Report (EIR), the annexation proceeding charge shall also include, in addition to \$1,060.00, all election and environmental documentation costs incurred by District.
2. For each acre of land included in the area proposed to be annexed, the sum of \$796.00.
3. Charges for fractional parts of an acre will be calculated on the basis of the nearest tenth-acre increment, provided, however, that in no event shall said acreage charge be less than TWO HUNDRED AND NO/100 DOLLARS (\$200.00).
4. Any fees or charges levied by other agencies for annexation proceedings such as the State Board of Equalization Filing Fees.

The above charges and the District Regulations Governing Water Service to Customers and the Schedule of Rate and Charges shall not be applicable to annexations which in the opinion of this Board present novel or unusual problems or situations or do not meet all the criteria set forth in Administrative Policy Statements approved by the Board dealing with annexations, and in all such instances the charges for the annexation shall be determined or approved by this Board at the time the terms and conditions for annexation are approved.

Schedule L

Drought Surcharge Rate Schedule for Water Service



SCHEDULE L

DROUGHT SURCHARGE RATE SCHEDULE FOR WATER SERVICE

The rates for the Water Flow Charge shown in Schedule A may be increased up to the following maximum percentages during the specified declared drought stage.

A TEMPORARY SURCHARGE FOR POTABLE WATER DELIVERED based on one month or two months of meter readings for all water delivered as a percentage of the total Water Flow Charge on customer bills:

DROUGHT SURCHARGES ON TOTAL WATER FLOW CHARGE FOR WATER DELIVERED				
	Maximum Applicable Drought Surcharge Percentage ¹ in 4 Stages			
	Stage 1	Stage 2	Stage 3	Stage 4
All potable water flow charges	0%	8%	20%	25%

¹Drought surcharge percentage increase will be applied to the applicable rate of the customer's potable Water Flow Charge from Schedule A Rate Schedule for Water Service. Prior to implementing the drought surcharges, the District will update drought related costs and develop surcharges based on the updated cost of service. Any surcharges that are imposed will be consistent with the District's staged system of drought surcharges and will not exceed the drought surcharge percentages listed in this Schedule.

Schedule M

Water Service Estimate Application Fees



SCHEDULE M

**RATE SCHEDULE FOR WATER SERVICE ESTIMATE, WITH MAIN EXTENSION
FIRE SERVICE REQUEST, HYDRANT ESTIMATE, FIRE SERVICE ESTIMATE,
STANDARD SERVICE GREATER THAN 2-INCH,
CONDITIONAL SERVICE WITHOUT MAIN EXTENSION AND
PIPELINE RELOCATION/REPLACEMENT/ABANDONMENT APPLICATION FEE**

This schedule applies to Water Service Estimates with Main Extensions, Fire Service Requests that require hydraulic modeling, Hydrant Estimates, Fire Service Estimates, Standard Services greater than 2 inches, Conditional Services without Main Extensions and Pipeline Relocations/Replacements/Abandonments.

A. SCHEDULE OF CHARGES

1. WATER SERVICE ESTIMATES REQUIRING MAIN EXTENSIONS FOR RESIDENTIAL DEVELOPMENT: BASED ON NUMBER OF DWELLING UNITS

Basic charge for up to 10 units	\$2,484.00
Each additional increment of 10 units or portion thereof up to 200 units	663.00
Over 200 units (including Basic charge)	14,612.00

2. WATER SERVICE ESTIMATES REQUIRING MAIN EXTENSIONS FOR COMMERCIAL, INDUSTRIAL, OR INSTITUTIONAL: BASED ON TOTAL SQUARE FOOTAGE OF THE STRUCTURE(S)

Basic charge for up to 10,000 square feet	\$3,946.00
Each additional increment of 10,000 square feet or portion thereof up to 100,000 square feet	664.00
Over 100,000 square feet (including Basic charge)	9,863.00

3. CONDITIONAL SERVICES WITH NO MAIN EXTENSION

Fixed price	\$1,463.00
-------------	------------



SCHEDULE M

**RATE SCHEDULE FOR WATER SERVICE ESTIMATE APPLICATION FEE
(Continued)**

A. SCHEDULE OF CHARGES (Continued)

4. FIRE SERVICE REQUEST (with hydraulic modeling), FIRE SERVICE ESTIMATE, HYDRANT ESTIMATE, STANDARD SERVICE GREATER THAN 1-1/2-INCH, DUAL SERVICE (COMBINATION STANDARD AND FIRE SERVICE) ESTIMATE

Fixed price	\$369.00
-------------	----------

5. PIPELINE RELOCATIONS/REPLACEMENTS/ABANDONMENTS

Fixed price	\$1,463.00
-------------	------------

B. CONDITIONS OF APPLICATION FEE

1. The fee is non-refundable.
2. The fee will not be used as a credit towards installation charges or for future estimates.
3. If preparation of a new Water Service Estimate is required due to changes in project scope requested by the applicant after the receipt of the Estimate Agreement or due to cancellation, then a new water service application with an additional fee will be required. The previous fee will be forfeited.
4. If more than one estimate or type of estimate is required for a single application, only the higher fee will be assessed.

Schedule N

Water Demand Mitigation Fees



SCHEDULE N

WATER DEMAND MITIGATION FEES

The Water Demand Mitigation Fee funds District conservation programs that are intended to achieve water savings that offset water demand from development within the territory or development where the fees are collected. The Water Demand Mitigation Fee is payable at the time application for service is made or prior to release of the distribution system pipelines and related appurtenances when the installation of water main extensions are required.

A. WATER DEMAND MITIGATION FEES FOR "THE MEADOWS" TERRITORY

For service connections within "The Meadows" territory¹ payment of a Water Demand Mitigation Fee shall be required in addition to all other applicable fees and charges, including the applicable System Capacity Charge (SCC).

1. Non-Residential Service Connections (dollars per connection)

METER SIZE (INCHES)	WATER DEMAND MITIGATION FEE FOR STANDARD SERVICE IN THE MEADOWS TERRITORY
5/8	\$13,940
3/4	20,070
1	31,220
1-1/2	60,210

2. Single Family Service Connections (dollars per connection)

METER SIZE (INCHES)	WATER DEMAND MITIGATION FEE FOR STANDARD SERVICE IN THE MEADOWS TERRITORY
5/8	\$13,650
3/4	20,070
1	31,220
1-1/2	60,210

¹ As defined in Contra Costa Local Agency Formation Commission Resolution No. 96-33, adopted August 13, 1997.



SCHEDULE N

WATER DEMAND MITIGATION FEES
(Continued)

3. The Water Demand Mitigation Fee for service connections with meters larger than 1-1/2 inches shall be determined on a case-by-case basis by the District based on water use information furnished by the applicant and applying the applicable SCC Future Water Supply component and multiplier (1.09) established by the Board of Directors for smaller meters.
4. For phased developments within The Meadows territory, the Water Demand Mitigation Fee is payable for all connections within the phase prior to release of the distribution system pipelines and related appurtenances.

B. WATER DEMAND MITIGATION FEES FOR "THE WENDT RANCH" TERRITORY

For service connections within "The Wendt Ranch" territory² payment of a Water Demand Mitigation Fee shall be required in addition to all other applicable fees and charges, including the applicable System Capacity Charge (SCC).

1. Non-Residential Service Connections (dollars per connection)

METER SIZE (INCHES)	WATER DEMAND MITIGATION FEE FOR STANDARD SERVICE IN THE WENDT RANCH TERRITORY
5/8	\$17,900
3/4	25,780
1	40,100
1-1/2	77,340

2. Single Family Service Connections (dollars per connection)

METER SIZE (INCHES)	WATER DEMAND MITIGATION FEE FOR STANDARD SERVICE IN THE WENDT RANCH TERRITORY
5/8	\$17,530
3/4	25,780
1	40,100
1-1/2	77,340

² As defined in Contra Costa Local Agency Formation Commission Resolution 97-5, adopted March 12, 1997.



SCHEDULE N

**WATER DEMAND MITIGATION FEES
(Continued)**

3. The Water Demand Mitigation Fee for service connections with meters larger than 1-1/2 inches shall be determined on a case-by-case basis by the District based on water use information furnished by the applicant and applying the applicable SCC Future Water Supply component and multiplier (1.40) established by the Board of Directors for smaller meters.
4. For phased developments within The Wendt Ranch territory, the Water Demand Mitigation Fee is payable for all connections within the phase prior to release of the distribution system pipelines and related appurtenances.

C. WATER USE OFFSET FEES FOR THE WIEDEMANN RANCH DEVELOPMENT³

For service connections within "The Wiedemann Ranch Development", payment of a Water Use Offset Fee shall be required in addition to all other applicable fees and charges, including the System Capacity Charge (SCC).⁴

1. Common Area Offset Fee

The total Water Use Offset Fee for common areas in The Wiedemann Ranch Development is \$69,468, and payable as a condition of issuance of the first meter for the common area.⁵

2. Single Family Service Connections

The Water Use Offset Fee for each residential lot in The Wiedemann Ranch Development is \$6,934, which amount shall be indexed using the same index as for the common area offset fee.

³The Wiedemann Ranch Development, SCC Region 3A, a 439 acre development in Contra Costa County, is described with particularity in Exhibit A to the July 20, 1993 Agreement Between EBMUD and HCV & Associates, Ltd., Wiedemann Ranch, Inc. and Sue Christensen ("Wiedemann Agreement").

⁴The Wiedemann Agreement specifies the amount and other terms related to the Future Water Supply Component of the SCC for the Wiedemann Ranch Development.

⁵The Water Use Offset Fee shall be indexed to the U.S. City Average of the Consumer Price Index issued by the U.S. Department of Labor for each calendar year or portion thereof from the July 20, 1993 date of the Wiedemann Agreement to the date of payment of the offset fee.



SCHEDULE N

**WATER DEMAND MITIGATION FEES
(Continued)**

**D. ADDITIONAL WATER USE OFFSET FEES FOR THE WIEDEMANN RANCH
DEVELOPMENT⁶**

For water service within The Wiedemann Ranch Development, payment of Additional Water Use Offset Fees shall be required in the event the annual water budget⁷ is exceeded.

1. The Additional Water Use Offset Fee shall be determined by the number of gallons of water used during the average of the two consecutive years in excess of the annual water budget times the per gallon fee of \$14.97.⁸

⁶The Wiedemann Ranch Development, SCC Region 3A, a 439 acre development in Contra Costa County, is described with particularity in Exhibit A to the July 20, 1993 Agreement Between EBMUD and HCV & Associates, Ltd., Wiedemann Ranch, Inc. and Sue Christensen ("Wiedemann Agreement").

⁷The Wiedemann Agreement specifies the formula for calculating the annual water budget and the specific methodology for calculating and collecting the additional water use offset fee.

⁸The Wiedemann Agreement specifies the terms related to the Additional Water Use Offset Fee. The Additional Water Use Offset Fee shall be indexed to the U.S. City Average of the Consumer Price Index issued by the U.S. Department of Labor for each calendar year or portion thereof from the July 20, 1993 date of the Wiedemann Agreement to the date of payment of the additional water use offset fee.



SCHEDULE N

WATER DEMAND MITIGATION FEES
(Continued)

E. WATER DEMAND MITIGATION FEES FOR CAMINO TASSAJARA INTEGRATED PROJECT⁹

For service connections within the Camino Tassajara Integrated Project¹⁰, payment of a Water Demand Mitigation Fee (WDMF) shall be required in addition to all other applicable fees and charges including the applicable System Capacity Charge (SCC). The Board of Directors adopted Section 3D to the Water Service Regulations in January 2003 to codify the WDMF and other conservation requirements imposed on the project territory by the County and Local Agency Formation Commission.

1. Non-Residential Service Connections (dollars per connection)

METER SIZE (INCHES)	WATER DEMAND MITIGATION FEE FOR STANDARD SERVICE IN THE CAMINO TASSAJARA INTEGRATED PROJECT
5/8	\$17,260
3/4	24,860
1	38,660
1-1/2	74,560

2. Single Family Service Connections (dollars per connection)

METER SIZE (INCHES)	WATER DEMAND MITIGATION FEE FOR STANDARD SERVICE IN THE CAMINO TASSAJARA INTEGRATED PROJECT
5/8	\$11,860
3/4	17,420
1	27,140
1-1/2	52,300

⁹ The Water Demand Mitigation Fee shall be indexed to the unit charge of the Future Water Supply component of the EBMUD System Capacity Charge.

¹⁰As generally described in the October 9, 2002 Miscellaneous Work Agreement between the District, Shapell Industries, Ponderosa Homes II, and Braddock and Logan Group II.



SCHEDULE N

**WATER DEMAND MITIGATION FEES
(Continued)**

3. The WDMF for service connections with meters larger than 1-1/2 inches shall be determined on a case-by-case basis by the District based on water use information furnished by the applicant and applying the applicable SCC Future Water Supply component and multiplier (1.61) established by the Board of Directors for smaller meters.

The WDMF for new water service at multi-family premises shall be as listed below. For purposes of this Schedule N, "multi-family premises" shall mean premises with two or more attached or separate residential dwelling units, rental or owner-occupied, which is determined by the District to be a single premises for receiving water service, provided that each separate dwelling unit of a multi-family premises shall be separately metered as specified in Sections 2 and 3 of the District's Regulations Governing Water Service.

Multi-Family Premises – Dollars Per Dwelling Unit (DU)

Each of the first 10 DU in a single structure	\$7,120
Each additional DU in same structure	5,690

The above WDMF shall apply regardless of the arrangement of water metering or meter size at the premises; however, the District may limit the size and number of service connections to a combined capacity appropriate to the anticipated water use at the premises.

No additional WDMF shall be applicable for separate meters installed to provide irrigation for landscaping on the premises in the immediate area contiguous to the dwelling unit structures, provided such landscaped area is to be used exclusively by the residents. All other rates and charges shall be based on actual number and size of meters and does not apply to the requirements listed below.

A WDMF shall be applicable for separate meters installed to serve other water uses in the vicinity of the multi-family premises, such as irrigation of open space areas, parks, roadway medians, recreational facilities, and areas designated for public use. The WDMF shall be based on meter size as provided under E.1 above. If these other water uses are included in the water service connection to the multi-family premises, the District shall, for purposes of determining the applicable WDMF, determine the equivalent meter size for these uses based on plumbing code and water industry standards, as if there were a separate service connection.



SCHEDULE N

**WATER DEMAND MITIGATION FEES
(Continued)**

4. The WDMF is payable for all connections within phased developments prior to release for construction, the distribution system pipelines and related appurtenances.
5. Water use in excess of 120 percent of the annual water budget¹¹ shall be subject to an Additional WDMF (on a per-occurrence basis). The Additional WDMF shall be determined by multiplying the amount of water used in excess of 100 percent of the annual water budget times the per gallon fee of \$1.10 per gpd.

¹¹The water budget shall be established pursuant to the October 9, 2002 Miscellaneous Work Agreement referenced in Footnote 2.



SCHEDULE N

WATER DEMAND MITIGATION FEES
(Continued)

**F. WATER DEMAND MITIGATION FEES FOR GALE RANCH PHASE 2,
SUBDIVISION 9134¹²**

For service connections within Gale Ranch Phase 2, Subdivision 9134, payment of a Water Demand Mitigation Fee (WDMF) shall be required in addition to all other applicable fees and charges including the applicable System Capacity Charge (SCC).

1. Non-Residential Service Connections (dollars per connection)

METER SIZE (INCHES)	WATER DEMAND MITIGATION FEE FOR STANDARD SERVICE IN THE GALE RANCH PHASE 2 SUBDIVISION 9134
5/8	\$16,530
3/4	23,810
1	37,020
1-1/2	71,440

2. Single Family Service Connections (dollars per connection)

METER SIZE (INCHES)	WATER DEMAND MITIGATION FEE FOR STANDARD SERVICE IN THE GALE RANCH PHASE 2 SUBDIVISION 9134
5/8 ¹³	\$11,350
3/4	16,700
1	25,950
1-1/2	50,060

¹² The Water Demand Mitigation Fee shall be indexed to the unit charge of the Future Water Supply component of the EBMUD System Capacity Charge.

¹³ 5/8" fee based on 32,594 gpd demand LUDS demand minus 10,884 gpd middle school demand credit divided by 63 residential units resulting in 345 gpd/residential unit.



SCHEDULE N

**WATER DEMAND MITIGATION FEES
(Continued)**

3. The WDMF for service connections with meters larger than 1-1/2 inches shall be determined on a case-by-case basis by the District based on water use information furnished by the applicant and applying the applicable SCC Future Water Supply component.

No additional WDMF shall be applicable for separate meters installed to provide irrigation for landscaping on the premises in the immediate area contiguous to the dwelling unit structures, provided such landscaped area is to be used exclusively by the residents. All other rates and charges shall be based on actual number and size of meters and does not apply to the requirements listed below.

A WDMF shall be applicable for separate meters installed to serve other water uses in the vicinity of the multi-family premises, such as irrigation of open space areas, parks, roadway medians, recreational facilities, and areas designated for public use. The WDMF shall be based on meter size as provided under F.1 above. If these other water uses are included in the water service connection to the multi-family premises, the District shall, for purposes of determining the applicable WDMF, determine the equivalent meter size for these uses based on plumbing code and water industry standards, as if there were a separate service connection.

**Wastewater System
Rates, Charges and Fees**

SCHEDULES OF RATES, CHARGES AND FEES

FY18

Wastewater System

Schedule A – Rates for Treatment Service

Schedule B – Wet Weather Facilities Charge

Schedule C – Industrial Permit Fees

Schedule D – Other Fees

Schedule E – Testing Fees

Schedule F – Rates for Resource Recovery Material Treatment

Schedule G – Capacity Fees

Schedule H – Wastewater Interceptor Connection Review and Inspection Fee

Wastewater Department

Schedule A

Rates for Treatment Service



**SCHEDULE OF RATES AND CHARGES TO CUSTOMERS
OF THE EAST BAY MUNICIPAL UTILITY DISTRICT**

PAGE NUMBER

1-A

EFFECTIVE

07/12/17

**SCHEDULE A
WASTEWATER DEPARTMENT
RATES FOR TREATMENT SERVICE**

Current

I. Unit Treatment Rates

Flow (\$ per 100 cubic ft.)	\$1.139
CODf (\$ per pound of discharge)	0.337
Suspended Solids (\$ per pound)	0.492

Unit treatment rates for Flow, Chemical Oxygen Demand filtered (CODf), Total Suspended Solids (TSS) and a Service Charge are applied to all users unless otherwise indicated.

II. Residential Monthly Charges

(6514 Multi-Family under 5 units & 8800 Single-Family)

A.	Service Charge (per account)	\$5.83
B.	Strength Charge (per dwelling unit)	8.02
	Minimum monthly charge per household	13.85
C.	Plus: A flow charge of \$1.14 per 100 cubic ft. applied to a maximum of 9 units (per dwelling unit)	
	Minimum monthly charge at 0 units	\$0.00
	Maximum monthly charge at 9 units	10.26
D.	Total Residential Charge (A+B+C above) ¹	
	Minimum monthly charge (for 8800)	\$13.85
	Maximum monthly charge (for 8800)	24.11
	Average monthly charge (for 8800)	20.69

¹Does not include SF Bay Residential Pollution Prevention Fee

III. Non-Residential Charges

A.	Monthly service charge (per account)	\$5.83
B.	Treatment charge including flow processing (per 100 cubic feet of sewage discharge)	
2010	Meat Products	\$7.48
2011	Slaughterhouses	7.54



**SCHEDULE OF RATES AND CHARGES TO CUSTOMERS
OF THE EAST BAY MUNICIPAL UTILITY DISTRICT**

PAGE NUMBER

1-B

EFFECTIVE

07/12/17

**SCHEDULE A
WASTEWATER DEPARTMENT
RATES FOR TREATMENT SERVICE**

	Current
2020 Dairy Product Processing	\$5.91
2030 Fruit and Vegetable Canning	4.80
2040 Grain Mills	4.93
2050 Bakeries (including Pastries)	8.40
2060 Sugar Processing	4.60
2077 Rendering Tallow	15.04
2080 Beverage Manufacturing & Bottling	3.56
2090 Specialty Foods Manufacturing	15.22
2600 Pulp and Paper Products	4.24
2810 Inorganic Chemicals Mfr.	5.65
2820 Synthetic Material Manufacturing	1.29
2830 Drug Manufacturing	2.66
2840 Cleaning and Sanitation Products	5.37
2850 Paint Manufacturing	10.48
2893 Ink and Pigment Manufacturing	3.70
3110 Leather Tanning and Finishing	14.35
3200 Earthenware Manufacturing	3.08
3300 Primary Metals Manufacturing	2.43
3400 Metal Products Fabricating	1.40
3410 Drum and Barrel Manufacturing	14.48
3470 Metal Coating	1.52
4500 Air Transportation	1.97
4951 Groundwater Remediation	1.18
5812 Food Service Establishments	5.20
6513 Apartment Buildings (5 or more units)	2.59
7000 Hotels, Motels with Food Service	3.77
7210 Commercial Laundries	3.29
7215 Coin Operated Laundromats	2.48
7218 Industrial Laundries	9.09
7300 Laboratories	1.78
7542 Automobile Washing and Polishing	2.36
8060 Hospitals	2.30
8200 Schools	1.68
All Other Business Classification Code (includes dischargers of only segregated domestic wastes from sanitary conveniences)	2.59



**SCHEDULE OF RATES AND CHARGES TO CUSTOMERS
OF THE EAST BAY MUNICIPAL UTILITY DISTRICT**

PAGE NUMBER

1-C

EFFECTIVE

07/12/17

**SCHEDULE A
WASTEWATER DEPARTMENT
RATES FOR TREATMENT SERVICE**

Multi-Use Food Service Establishments and Domestic Waste Accounts

Accounts identified by EBMUD where there is one or more food service establishments or bakeries sharing the water meter with establishments or operations with only domestic waste discharges. These accounts are assigned an MT code based on the percentage split of the discharge from the food service establishment operations or bakeries and domestic waste. The unit treatment charge for each MT Code is calculated from the food service establishment or bakeries treatment rate and the domestic waste treatment rate.

MT Code		Current
A	0-9% Food, 91-100% Domestic	\$2.59
B	10-19% Food, 81-90% Domestic	2.85
C	20-29% Food, 71-80% Domestic	3.11
D	30-39% Food, 61-70% Domestic	3.37
E	40-49% Food, 51-60% Domestic	3.63
F	50-59% Food, 41-50% Domestic	3.90
G	60-69% Food, 31-40% Domestic	4.16
H	70-79% Food, 21-30% Domestic	4.42
I	80-89% Food, 11-20% Domestic	4.68
J	90-99% Food, 1-10% Domestic	4.94
K	0-9% Bakery, 91-100% Domestic	2.59
L	10-19% Bakery, 81-90% Domestic	3.17
M	20-29% Bakery, 71-80% Domestic	3.75
N	30-39% Bakery, 61-70% Domestic	4.33
O	40-49% Bakery, 51-60% Domestic	4.91
P	50-59% Bakery, 41-50% Domestic	5.50
Q	60-69% Bakery, 31-40% Domestic	6.08
R	70-79% Bakery, 21-30% Domestic	6.66
S	80-89% Bakery, 11-20% Domestic	7.24
T	90-99% Bakery, 1-10% Domestic	7.82

Minimum Monthly Treatment Charge:

6513	Apartment Buildings (5 or more units)	\$45.93
	All Others	5.83

Wastewater Department

Schedule B

Wet Weather Facilities Charge



**SCHEDULE OF RATES AND CHARGES TO CUSTOMERS
OF THE EAST BAY MUNICIPAL UTILITY DISTRICT**

PAGE NUMBER

2-A

EFFECTIVE

07/12/17

**SCHEDULE B
(Formerly Schedule F)**

WET WEATHER FACILITIES CHARGE

Annual Charge Collected on Property Tax Bill

TYPE	RATE
Small Lot (0-5,000 sq ft)	\$98.80
Medium Lot (5,001-10,000 sq ft)	\$154.34
Large Lot (>10,000 sq ft)	\$352.80

Wastewater Department

Schedule C

Industrial Permit Fees



**SCHEDULE OF RATES AND CHARGES TO CUSTOMERS
OF THE EAST BAY MUNICIPAL UTILITY DISTRICT**

PAGE NUMBER

3-A

EFFECTIVE

07/12/17

SCHEDULE C

**WASTEWATER DEPARTMENT
INDUSTRIAL PERMIT FEES**

PERMIT TYPE	FEE
Wastewater Discharge Permit	\$2,580 annual
Estimation Permit	\$970 annual
Limited Term Discharge Permit	\$2,500 annual

Wastewater Department

Schedule D

Other Fees



**SCHEDULE OF RATES AND CHARGES TO CUSTOMERS
OF THE EAST BAY MUNICIPAL UTILITY DISTRICT**

PAGE NUMBER

4-A

EFFECTIVE

07/12/17

SCHEDULE D

**WASTEWATER DEPARTMENT
OTHER FEES**

TYPE	RATE
SF Bay Commercial Pollution Prevention Fee	\$5.48/Mo ¹
SF Bay Residential Pollution Prevention Fee	\$0.20/mo per dwelling unit ²
Monitoring Fees	\$1,360
Violation Follow-Up Fees	
Stage 1	\$670
Stage 2	\$1,410 + Testing Fees ³
Stage 3	\$2,950 + Testing Fees ³
Private Sewer Lateral Compliance Fees	
Compliance Certificate	\$250
Time Extension Certificate	\$100
Inspection Reschedule	\$73
Extra Lateral or Additional Verification Test	\$66 per lateral
Off-Hours Verification	\$200 for 2.5 hours
Non-Compliance – Initial Fee	\$350
Non-Compliance – Monthly Fee	\$87

¹SF Bay Commercial Pollution Prevention Fee applicable to all non-residential accounts.

²SF Bay Residential Pollution Prevention Fee applicable to all residential accounts. Fee will be charged per dwelling unit up to 5 dwelling units.

³Violation follow-up fees do not include required testing. Testing fees will be charged in accordance with Schedule E Wastewater Department Testing Fees.

Wastewater Department

Schedule E

Testing Fees



**SCHEDULE OF RATES AND CHARGES TO CUSTOMERS
OF THE EAST BAY MUNICIPAL UTILITY DISTRICT**

PAGE NUMBER

5-A

EFFECTIVE

07/01/13

SCHEDULE E

**WASTEWATER DEPARTMENT
TESTING FEES**

LABORATORY TEST CHARGES	FEE	METHOD
Arsenic	\$120	SM3144 B-2009
Cadmium	70	EPA 200.7
Chromium	70	EPA 200.7
Copper	70	EPA 200.7
Iron	70	EPA 200.7
Lead	70	EPA 200.7
Mercury: Cold Vapor	120	EPA 245.1
Nickel	70	EPA 200.7
Silver	70	EPA 200.7
Zinc	70	EPA 200.7
ICP Metals Scan* (including metals digestion)	115	EPA 200.7
Chemical Oxygen Demand: Filtered (CODF)	60	SM5220 D-1997
Total Suspended Solids (TSS)	45	SM2540 D-1997
Cyanide (Amenable to Chlorination)	115	SM4500 CN- H
Cyanide (Total)	100	SM4500 CN- C, E-1999
EPA 608 (Organochlorine pesticides & PCBs)	345	EPA 608
EPA 608 (PCBs only)	320	EPA 608: PCBs ONLY
EPA 624 (Volatile Organics)	255	EPA 624
EPA 624 ESD/R2 (Volatile Organics)	255	EPA 624 (EBMUD Modified)
EPA 625 (Semi-volatile Organics)	400	EPA 625
Oil & Grease: Gravimetric (EPA 1664)	110	EPA 1664
Oil & Grease: Hydrocarbons (EPA 1664)	140	EPA 1664
pH	25	SM4500-H + B-2000
Field Data (pH)	14	SM450-H + B-2000
Phenols: total	115	EPA 420.1
PCBs (SFEI 40 congeners)	700	EPA 1668C

*ICP Metal Scan change is not per element

Wastewater Department

Schedule F

Rates for Resource Recovery Material Treatment



**SCHEDULE OF RATES AND CHARGES TO CUSTOMERS
OF THE EAST BAY MUNICIPAL UTILITY DISTRICT**

PAGE NUMBER

6-A

EFFECTIVE

07/12/17

**SCHEDULE F¹
(Formerly Schedule B)**

**WASTEWATER DEPARTMENT
RATES FOR RESOURCE RECOVERY MATERIAL TREATMENT**

MATERIAL TYPE	RATE²
Septage	\$0.07/gal
Fats, Oil and Grease	\$0.08/gal
Process Water	\$0.05/gal
Brine	<u>Variable with Total Dissolved Solid (TDS)</u> \$0.04/gal ≤50,000 mg/l TDS \$0.05/gal 50,001 – 100,000 mg/l TDS \$0.08/gal > 100,000 mg/l TDS
Sludge	<u>Variable with % Total Solids (TS)</u> \$0.05/gal up to 3% TS plus \$0.005/gal per %TS for TS between 3% to 20%
Liquid Organic Material	\$0.04/gal
Protein Material	\$0.08/gal
Solid Organic Material	\$30/ton - \$65/ton ³
Permit Fee	\$300 (per year)

¹Payment collection for all Resource Recovery accounts shall follow the payment collection provisions contained in Section 13, Payment of Bills in the Regulations Governing Water Service to the Customers of EBMUD and Items C and K, Returned Payment Charge and Late Payment Penalty and Interest, of Schedule C of the Water System Rates and Charges.

²For special accommodations, additional charges for actual personnel costs, equipment costs, and lab costs associated with the special accommodation will apply. Special accommodations include services provided by the District above and beyond what is typical, such as evaluation and testing of a unique material stream, special equipment to receive and process material, accommodations for large volumes, special off-hour deliveries that require additional staff support, or special treatment requirements.

³Based on treatment costs (residual solids dewatering and disposal), gas production, volumes and other costs or benefits to the District.

Wastewater Department

Schedule G

Capacity Fees



SCHEDULE G

WASTEWATER DEPARTMENT
CAPACITY FEES

Residential (\$/dwelling unit)^{1,5} \$2,510²

Non-Residential (\$/ccf/mo)^{3,4,5}

2010	Meat Products	\$1,233
2011	Slaughterhouses	1,179
2020	Dairy Product Processing	970
2030	Fruit and Vegetable Canning	782
2040	Grain Mills	778
2050	Bakeries (including Pastries)	1,338
2060	Sugar Processing	770
2077	Rendering Tallow	2,314
2080	Beverage Manufacturing & Bottling	587
2090	Specialty Foods Manufacturing	2,492
2600	Pulp and Paper Products	669
2810	Inorganic Chemicals Manufacturing	858
2820	Synthetic Material Manufacturing	209
2830	Drug Manufacturing	438
2840	Cleaning and Sanitation Products	876
2850	Paint Manufacturing	1,679
2893	Ink and Pigment Manufacturing	614
3110	Leather Tanning and Finishing	2,316
3200	Earthenware Manufacturing	478
3300	Primary Metals Manufacturing	381
3400	Metal Products Fabricating	227
3410	Drum and Barrel Manufacturing	2,358
3470	Metal Coating	245
4500	Air Transportation	319
5812	Food Service Establishments	813
7000	Hotels, Motels with Food Service	587
7210	Commercial Laundries	529
7215	Coin Operated Laundromats	400
7218	Industrial Laundries	1,486



SCHEDULE G

WASTEWATER DEPARTMENT

CAPACITY FEES

(Continued)

7300	Laboratories	289
7542	Automobile Washing and Polishing	379
8060	Hospitals	365
8200	Schools	271
	All Other Business Classification Codes (includes dischargers of only segregated domestic wastes from sanitary conveniences)	411

Permit Accounts^{4, 6}

Flow (\$/ccf/mo)	184.44
Chemical Oxygen Demand Filtered (CODF) (\$/lb/mo)	57.27
Total Suspended Solids (TSS) (\$/lb/mo)	72.96

¹ Includes BCC 6514 and 8800.

² Residential fee is calculated as follows:

Flow:	6.7	x	\$184.44	=	\$1,236
CODF:	7.9	x	57.27	=	452
TSS:	11.29	x	72.96	=	<u>824</u>
					\$2,512
					Rounded to
					\$2,510

³ Capacity Fee is based on the anticipated maximum monthly flow contributions and the average wastewater strength measured or assigned for each classification of customer. The District may review the actual flow and strength within 24 months, once the business is fully established to verify the estimated demand for wastewater capacity. The review may result in the assessment of additional capacity fees if the actual flow and strength exceeds the original estimate.

⁴ For non-residential customers with projected treatment revenues equal to or greater than 0.1% of the total District treatment revenue, the calculated capacity fee will be reduced by a Rate Stabilization Factor of 25%. Projected treatment revenue will be based on permit conditions at the time of application or on average wastewater strength measured for each classification of customer if a permit is not required for discharge. Total District treatment revenue will be based on the budgeted fiscal year amount at the time of application.



SCHEDULE G

WASTEWATER DEPARTMENT

CAPACITY FEES

(Continued)

⁵ A credit may be provided for existing services. Where a new service will replace one or more existing or prior services to a premise and a capacity fee was paid, a credit will be applied to the new capacity fee based on the previous capacity unit paid or if the existing service had not paid a capacity fee (for accounts in service prior to July 1, 1987) then the credit is based on historic use over the preceding 10 year period.

⁶ Total fee is a summation of the unit rates for flow, CODF, and TSS times permit conditions at the time of application.

Wastewater Department

Schedule H

Wastewater Interceptor Connection Review and Inspection Fee



**SCHEDULE OF RATES AND CHARGES TO CUSTOMERS
OF THE EAST BAY MUNICIPAL UTILITY DISTRICT**

PAGE NUMBER

8-A

EFFECTIVE

07/01/05

SCHEDULE H

**WASTEWATER DEPARTMENT
WASTEWATER INTERCEPTOR CONNECTION REVIEW AND
INSPECTION FEE**

TYPE	RATE
Wastewater Interceptor Connection Review and Inspection Fee Plan Review and Project Coordination Construction Inspection	 \$1,750 2,300

SCHEDULES OF RATES, CHARGES AND FEES

FY18

Other District Fees

Real Property Use Application Fees

Public Records Act Fee Schedule and District Publications Fees

Schedule of Recreation Use Fees for July – December 2017

Schedule of Recreation Use Fees for January – June 2018

Real Property Use Application Fees



**SCHEDULE OF RATES AND CHARGES TO CUSTOMERS
OF THE EAST BAY MUNICIPAL UTILITY DISTRICT**

PAGE NUMBER

1

EFFECTIVE

07/12/17

REAL PROPERTY USE APPLICATION FEES

TYPE OF USE	APPLICATION FEE
Fee Title (<i>Outright purchase of District property</i>) Properties for Sale Unsolicited	\$2,100.00 12,300.00
Easement (<i>Rights for permanent use of District property, such as access, utilities, etc.</i>) Utility Type Other	2,100.00 5,700.00
Quitclaim (<i>Removal of District's right, title and interest to property</i>) Pipe Abandonment Other	1,000.00 2,300.00
Revocable License (<i>Permission to use District property for periods exceeding one year, subject to revocation. For such uses as utility and road crossings of aqueduct properties</i>)	1,700.00
Lease (<i>The right to occupy and use District land for a specified time period</i>)	2,100.00
Telecommunication Lease (<i>Long-term lease for PCS, cellular and/or radio uses</i>)	3,500.00
Information-only (<i>Request for information requiring research of District records. Information-only applicants will be charged a fee only if the estimated research time exceeds one hour</i>)	130.00/hr
Processing and Review of Watershed Land Use Proposals (<i>Request for District to perform a formal evaluation of watershed land use proposal</i>)	130.00/hr (plus all other District costs)
Property Entry Permits, Rights of Entry Permits (<i>Permission for temporary access onto District</i>)	310.00
Limited Land Use Permit (<i>Allows landscaping, gardening or other minor surface use of District property, subject to annual renewal</i>)	110.00
Temporary Construction Easement/Encroachment Permit (<i>Permission for temporary access onto District</i>) Open Land, No District Facilities With District Facilities	630.00 2,200.00
Survey Costs if needed (<i>Application use fees listed above do not include survey costs if needed</i>)	\$140.00/hr

Public Records Act Fee Schedule and District Publications Fees



PUBLIC RECORDS ACT FEE SCHEDULE

INTRODUCTION

The following Fee Schedule has been established by the District to cover the costs for duplicating District documents, drawings, maps, recordings, and other records, as required by the Public Records Act.

The District offers access to its records upon receipt of a request that reasonably describes an identifiable record. Any questions or requests concerning District documents should be addressed to the Secretary of the District, East Bay Municipal Utility District, P.O. Box 24055, Oakland, California 94623-1055, or by calling (510) 287-0404.

CHARGES

Pursuant to the Public Records Act, the District may recover the "direct cost of duplication" for disclosable public records, unless a different charge is provided by statute. The direct cost of duplication generally covers two types of expenses – materials & equipment costs and labor costs.

- Materials & Equipment costs generally include the capital cost of the equipment, the maintenance contract, paper supplies, and other necessary expenses that must be incurred in order to make the equipment operational.
- Labor costs ordinarily include the pro rata salary and benefits of the clerical or technical employee operating the equipment.

The total cost for providing copies is a combination of materials, labor for actual duplication time, equipment usage, and postage, if applicable. The direct cost of duplication may vary depending on the size and type of media requested and the kind of reproduction equipment required.

Photocopies of non-District materials housed in the District Library or in other areas are charged at the same rate as District documents.

Prices quoted in this fee schedule are subject to change. An estimate of cost will be provided upon request.

Any records sent outside for duplication will be billed the actual cost of duplication by the outside vendor.

PAYMENT

For requests estimated to cost over \$100 in duplication fees, a deposit in the amount of the estimated fee will be required before duplication.

For all requests, payment in advance is required before release of records. Acceptable methods of payment include cash or check (payable to East Bay Municipal Utility District).



PUBLIC RECORDS ACT FEE SCHEDULE

(Continued)

INSPECTION/DELIVERY/PICK UP

The requestor is entitled to inspect records and/or obtain copies of records during normal business hours (8:00 a.m. to 4:30 p.m., Monday through Friday).

If the requestor wishes records to be delivered, copies will be sent first class mail unless the requestor makes other arrangements for pick up or delivery with the Secretary's Office. Postage will be charged for copies mailed to the requestor.

Federal Express service is available if the requestor supplies a Federal Express account number.

LEGAL COMPLIANCE OBLIGATIONS

Responsibility for adherence to copyright law rests with the individual requesting copies.

CATEGORIES

This Fee Schedule covers the following categories of document types or formats:

- I. Paper Based Records
 - A. General Business Documents & Engineering Drawings
 - B. Printed Maps
 - C. Bid Documents for Publicly Bid Projects
- II. Electronically Stored or Generated Records
 - A. Records that already exist
 - B. Records that do not already exist
 - C. Audio Cassette Tapes
 - D. Compact Disks (CDs)
 - E. Digital Versatile Disks (DVDs)

Fees for document types/requests not covered herein will be provided upon request.



PUBLIC RECORDS ACT FEE SCHEDULE

(Continued)

I. PAPER BASED RECORDS

A. GENERAL BUSINESS DOCUMENTS & ENGINEERING DRAWINGS

The fees charged for reproducing general business documents and engineering drawings, and printed maps photocopied onto regular paper in the sizes indicated below are based on the actual cost of duplication by District.

**Fee = Labor Cost (\$0.56 per minute duplicating time)
+ Materials & Equipment Cost (e.g., cost per sheet or media)
+ Postage (if applicable)**

- **Labor Costs:** Labor costs for duplication time is charged at the rate of \$0.56 per minute. Labor costs are based on the labor rate of a clerical employee and is charged only for the actual time spent on duplication.
- **Material & Equipment:** The duplicating cost per sheet or media type is based on the actual cost of materials and equipment needed to reproduce documents. As detailed below, fees will vary depending on the type and size of documents and the method used for duplication.

1) Regular copies

8-1/2 x 11 \$0.09/pg
11 x 17 0.17/pg

2) Color copies

Requests for color copies may be sent to an outside vendor and charged back to the requestor.

3) Facsimile copies within the continental U.S.

8-1/2 x 11 0.50/pg



PUBLIC RECORDS ACT FEE SCHEDULE

(Continued)

4) ENGINEERING DRAWINGS

Size	Bond	Vellum
8-1/2 x 11	\$0.09	N/A
11 x 17	0.17	N/A
17 width	0.33	N/A
22 width	0.66	\$1.77
28 x 38	0.96	N/A

For sizes larger than those indicated in this chart, Engineering Records will determine the cost.

Drawings having a width greater than 36 inches cannot be reproduced on District equipment and must be sent out for commercial copying. These charges will be billed to the requestor.

B. PRINTED MAPS

The fees in this section apply to the duplication of existing hard copy B-maps. The fee listed is the cost per map for duplication by the District's print shop. All other pre-printed map sizes require special formatting and the cost for duplication by an outside vendor will be determined upon request.

- **B-maps** 250' scale (11 x 17) includes Map View prints...\$0.99/map
- **Map Book Covers.** 38.64/cover

C. BID DOCUMENTS FOR PUBLICLY BID PROJECTS

Copies of plans and specifications for publicly bid construction projects are available through the District's Specifications, Cost Estimating, and Engineering Standard Records (ESR) Section at a per set cost established as each project is issued for bid. The fee will be based on the cost for duplication at the District's print shop or an outside copy service and postage, if applicable.

Pre-paid documents will be sent first class mail unless the requestor makes other arrangements for document pickup or delivery with the Specification's Clerk. Federal Express service is available if the requestor supplies a Federal Express account number.



PUBLIC RECORDS ACT FEE SCHEDULE

(Continued)

Contract Documents are also available for viewing and downloading online at EBMUD's public website: www.ebmud.com, via the "Business Opportunities" and "Construction Bid Opportunities" Link.

Copies of CD-ROM versions of contract documents in Adobe Acrobat format are available free of charge from the Specifications Clerk at 510-287-1040.

Copies of historic contract documents can be provided in accordance with the provisions of item 1: General Business Documents.

II. ELECTRONICALLY STORED OR GENERATED DATA

The fees in this section apply to records stored electronically.

In general, there are two types of electronic records: (a) records that already exist on the system and merely require printing; and (b) records that do not currently exist and require data compilation, extraction, or programming to produce. A different fee rate applies to each of these types of records.

A. RECORDS THAT ALREADY EXIST

When a requester seeks a record that already exists on the system (i.e., a record merely needs to be retrieved and printed, and does not require data compilation, extraction, or programming to produce), the following fee applies:

**Fee = Labor Cost (\$0.56 per minute duplicating time)
Materials & Equipment Cost
+ Postage (if applicable)**

Materials & Equipment costs vary with the types/formats of records requested, as specified below:

1) Digital copies – PDF Files of B-maps

Cost of Media:

- | | |
|-----------------------|---------|
| • CD | \$ 3.05 |
| • DVD | 6.35 |
| • Electronic transfer | N/C |



PUBLIC RECORDS ACT FEE SCHEDULE

(Continued)

2) Maps on Demand

Cost per copy:

Size	Bond	Vellum*	Bond Color
8-1/2 x 11	\$0.10	\$0.19	\$0.38
11 x 17	0.19	0.36	0.73
17 x 22	0.33	0.60	2.05
22 x 34	0.49	0.84	3.38
28 x 38	0.66	1.10	5.02

*These costs reflect color plots produced only from existing files.

3) Other Electronic Records

Description	Charge Per Unit
- 8-1/2 x 11 (PC Printer)	\$0.09/pg
- CD	3.05/ea
- DVD	6.35/ea

B. RECORDS THAT DO NOT ALREADY EXIST

When a requester seeks records that do not currently exist on the system and require data compilation, extraction, or programming to produce, the requestor shall pay the cost to construct a new record, and the cost of programming and computer services necessary to produce a copy of the record. However, the District is under no obligation to provide records that do not already exist. Accordingly, the applicable fee is:

**Fee = Labor Cost (\$1.05 per minute production time)
+ Materials & Equipment Cost (rates specified in Section II.A)
+ Postage (if applicable)**

Labor cost is based on the "average technical labor" rate and is charged only for the actual time spent producing the record.



PUBLIC RECORDS ACT FEE SCHEDULE

(Continued)

This fee also applies when the request requires producing a record outside of the regularly scheduled interval.

C. AUDIO CASSETTE TAPES

Regular meetings of the Board of Directors are recorded on audiotape. Copies of tapes are available upon request.

**Fee = Labor Cost (\$0.56 per minute duplicating time)
Cost per tape (90-minute cassette tape = \$1.68/tape)
+ Postage (if applicable)**

D. COMPACT DISCS (CDs)

**Fee = Labor Cost (\$0.56 per minute duplicating time)
Cost per disc (CD-R Disc, Write-Once, 700MB, 80 Minute, 52X = \$3.05/disc)
+ Postage (if applicable)**

E. DIGITAL VERSATILE DISCS (DVDs)

**Fee = Labor Cost (\$0.56 per minute duplicating time)
Cost per disc (DVD+R, 16X, Single Sided, 4.7 GB/120 Minutes = \$6.35/disc)
+ Postage (if applicable)**



DISTRICT PUBLICATIONS FEES

Fee = **Cost of publication** (see below)
 + **Sales tax**
 + **Postage (if applicable)**

Municipal Utility District Act \$5.15

Rules and Regulations 8.12
(Customer Service Book)

Water Conserving Plants and Landscape for the Bay Area
(Water Conservation Section)

 1 – 4 copies (EBMUD pickup) 12.00

 1 – 4 copies (mailed) 15.00

 5 or more copies 11.00

Its Name Was MUD 18.00

Educational Materials (Outside of District's Service Area)

 Teachers Guides

 1 – 50 copies \$2.00 each

 51 – 1,500 copies 1.75 each

 Student Workbooks

 1 – 5,000 copies 0.50 each

 5,001 – 50,000 copies 0.43 each

 Captain Hydro Posters

 1 – 1,000 copies 0.70 each

 1,001 and up 0.50 each

Plants and Landscapes for Summer Dry Climates of the San Francisco Bay Region

 Soft cover \$34.95 each

 District customer and employee 24.95 each

 Hardcover 49.95 each

 District customer and employee 29.95 each

 Wholesalers up to 60% discount

 Vendors up to 50% discount

Recreation Use Fees
July – December 2017



**RECREATION USE FEES FOR 2017
January - December 2017***

The following fees apply to use of the District's recreation facilities at Camanche Hills Hunting Preserve, Camanche Reservoir, Lafayette Reservoir, Pardee Reservoir, San Pablo Reservoir and on the District's Watershed Trail System.

All other (not included in this schedule) charges and fees for merchandise and services provided to the public in connection with the public uses of the recreation areas and facilities thereat shall be determined by the concessionaire or the District and shall be reasonable and consistent with charges for similar merchandise and services at similar locations.

General Discount Program – Discounts from fees listed may be offered in order to attract new customers and/or improve revenues. General discounts will be applied for specified time frames and apply fairly and uniformly. General discounts must be approved by the Director of Water and Natural Resource Department in advance.

District employees, retirees and immediate family receive free vehicle entry and boat launch, and a camping discount equal the car entry fee (limit one per day).

Volunteer Discount Program – Free one-year Trail Use Permit and 50% discount on vehicle entry/parking and boat launch for those who contribute an annual minimum of 20 hours of volunteer work while participating in a District Volunteer Program.

Distinguished Veteran Discount Program – Holders of the California State Parks Distinguished Veteran Pass receive free day use and boat launch at all District recreation areas.

Fishing Access Permits are required for persons 16 years of age or older. Up to four children 15 years and under and accompanied by a person who possesses a valid CA fishing license and daily fishing access permit, may fish under that fishing access permit subject to the daily possession limit of the permit holder. Every accompanied child, over the allowed number of 4, must have individual fishing access permits. Each child not accompanied by a fishing access permit holding adult must obtain his/her own fishing access permit.

No Fishing Access Permit is required on the two annual California Department of Fish and Wildlife Free Fishing Days.

*Fee years are by calendar year for all locations except the Camanche Hills Hunting Preserve where fees are implemented earlier for the hunting year October 1 - September 30.



**SCHEDULE OF RATES AND CHARGES TO CUSTOMERS
OF THE EAST BAY MUNICIPAL UTILITY DISTRICT**

PAGE NUMBER 2

EFFECTIVE 01/01/17

CAMANCHE HILLS HUNTING PRESERVE	<u>USE FEE</u>
PRESERVE LICENSE (QUANTITY PRICE BREAK)	
PRESERVE LICENSE:	
Initiation Fee (Family)	\$2,995.00
Initiation Fee (Corporate)	2,995.00
Annual Maintenance (Family)	200.00
Annual Maintenance (Corporate)	400.00
LICENSED GUIDE GOOSE HUNT (PER PERSON/HUNT)	200.00
BIRD PROCESSING: (PRICE PER EACH)	
Pheasant	4.00
Chukar	4.00
20-bird card (pheasant and chukar) for 20	70.00
Duck	4.50
Goose	10.00
Smoking (all birds)	5.00
Dog Rental	
Half Day	75.00
Full Day	140.00
Special Hunt	140.00
SPORTING CLAYS	
Full Round Course (100 targets)	40.00
Half Round Course (50 targets)	22.00
Additional Round	10.00
Full-Day	50.00
25 targets (5-Stand/Grouse bunker)	9.00
25 targets (Skeet/trap)	6.00
ARCHERY RANGE AND COURSE	
7 Station 3-D target Course	
Per person	10.00
Per pair	18.00
Per group (max 4)	34.00
FISHING ACCESS TO RABBIT CREEK ARM OF CAMANCHE LAKE AND FARM PONDS LOCATED ON CHHP RECREATIONAL AREA	
Public Fishing Access	10.00
CHHP Members Access	5.00
FISHING ACCESS TO RABBIT CREEK ARM OF CAMANCHE LAKE	
Public Fishing Access: Bow for Carp	10.00



**SCHEDULE OF RATES AND CHARGES TO CUSTOMERS
OF THE EAST BAY MUNICIPAL UTILITY DISTRICT**

PAGE NUMBER 3

EFFECTIVE 01/01/17

**CAMANCHE HILLS HUNTING PRESERVE
(continued)**

USE FEE

RV Parking Area

Nightly \$6.00

Clubhouse Rental (daily) 500.00

Kitchen Rental (daily) 500.00

Grounds (daily) 500.00

**Camanche Hills Hunting Preserve
Discounts, Special Programs and Limitations**

Pricing for planted bird hunting will be reviewed and approved by the Director of Water and Natural Resources.

Free bird hunting and sporting clays shooting is offered to the communications media, based on the availability of birds and the sporting clays course.

Free use of the facilities is offered to non-profit hunting organizations for family, disabled and junior hunting functions.

A Target Shooting (sporting clay, trap, 5-stand and bunkers) discount of 15% is offered to Senior and Disabled visitors.

A Target Shooting discount of 50% is offered to Distinguished Veteran Pass holders.

A Driven Pheasant Shoot discount of 15% is offered to Senior, Disabled and Distinguished Veteran Pass holders.

An RV Parking discount of 50% is offered to Senior, Disabled and Distinguished Veteran Pass holders.

Daily field trial events are permitted on a limited basis. Fees range from \$0 for qualified non-profit organizations to a maximum of \$200.00.

EBMUD employees and retirees, concession employees and Tri-County (Amador, Calaveras and San Joaquin) Public Safety Personnel receive a 20% discount on food purchases and a 10% discount on sporting clays.

Discounts and incentives are separate and cannot be combined for a larger discount or incentive.

The Daily fee is valid only on the date of purchase and provides the hunter with opportunities to hunt and harvest either 3 pheasants or 6 quail.



**SCHEDULE OF RATES AND CHARGES TO CUSTOMERS
OF THE EAST BAY MUNICIPAL UTILITY DISTRICT**

PAGE NUMBER 4

EFFECTIVE 01/01/17

**CAMANCHE RESERVOIR - NORTH SHORE
AND SOUTH SHORE RECREATION AREAS**

USE FEE

**VEHICLE ENTRY/PARKING
CAR/MOTORCYCLE/SMALL VAN**

Daily	\$12.50
Daily, after 3:00pm on non-holiday weekends	10.00
Daily (Off-season)	8.00
Nightly (non-camping)	12.00
Annual	160.00
Combined Car/Boat Daily	17.00
Combined Car and Boat 5 Use Card (Off-season)	60.00
Combined Car and Boat 5 Use Card, after 3:00pm weekdays	37.50
Annual Marina Overnight/Day Use	210.00

**VEHICLE ENTRY/PARKING
LARGE VANS AND BUSES**

Large Vans - 10-20 Passengers	19.00
Buses – 21+ Passengers	36.00

DOG - daily	5.50
--------------------	------

BOAT LAUNCH

Daily	10.00
Daily (Off-season)	7.00
Night	10.00
Annual	150.00

Senior/Disabled/Former POW/Disabled Veteran Annual	75.00
--	-------

BOAT MOORING (Buoy)

Nightly	15.00
Weekly	80.00
Monthly: under 30 feet	250.00
30 feet & larger	325.00
Annual: under 30 feet	1,450.00
30 feet & larger	1,900.00



**SCHEDULE OF RATES AND CHARGES TO CUSTOMERS
OF THE EAST BAY MUNICIPAL UTILITY DISTRICT**

PAGE NUMBER 5

EFFECTIVE 01/01/17

**CAMANCHE RESERVOIR - NORTH SHORE
AND SOUTH SHORE RECREATION AREAS
(continued)**

USE FEE

BOAT SLIP OPEN (Excl. park entry)

Daily	\$30.00
Weekly	150.00
Monthly	350.00
Annual	1,650.00
8 Months	1,350.00
Key Security Deposit	10.00

**BOAT SLIP COVERED – 24' Length
Maximum**

Daily	40.00
Weekly	170.00
Monthly	460.00
Annual	1,850.00
Key Security Deposit	50.00

**BOAT SLIP COVERED – (over 24' Length
Excl. Park Entry)**

Daily	45.00
Weekly	210.00
Monthly	560.00
Annual	2,250.00
Key Security Deposit	50.00

**RV/TRAILER/BOAT STORAGE (Excl. park
entry)**

Weekly	50.00
Monthly	120.00
12 Months, consecutive	700.00
Monthly – 30' Length Maximum (Concurrent with Mooring/Slip Rental)	55.00
Monthly – Over 30' (Concurrent with Mooring/Slip Rental)	85.00
Annual – 30' Length Maximum (Concurrent with Mooring/Slip Rental)	300.00
Annual – Over 30' (Concurrent with Mooring/Slip Rental)	425.00
Annual – concurrent with Mobile Home Space rent	425.00
Annual – concurrent with Mobile Home Space Rent (<28', 1 boat only, dry # 3)	175.00



**SCHEDULE OF RATES AND CHARGES TO CUSTOMERS
OF THE EAST BAY MUNICIPAL UTILITY DISTRICT**

PAGE NUMBER 6

EFFECTIVE 01/01/17

**CAMANCHE RESERVOIR - NORTH SHORE
AND SOUTH SHORE RECREATION AREAS
(continued)**

USE FEE

FISHING ACCESS PERMIT

Daily	\$6.00
Annual	130.00

CAMPSITE (w/vehicle parking)

Nightly	28.00
Nightly (Off-season – Friday thru Sunday nights)	16.00
Midweek (Monday thru Thursday night)	8.00
Second Car Parking	12.00
Weekly	150.00
Second Car Weekly	70.00
14 nights	275.00
5 Use Card (Off-season)	75.00
Camping Reservation Fee	10.50

LAKESIDE PREMIUM CAMPSITES

Nightly	35.00
Nightly (Off Season Friday thru Sunday nights)	16.50
Midweek (Monday thru Thursday night)	8.25
Second Car Parking	12.00
Weekly	180.00
Second Car Weekly	75.00
14 Nights	330.00
5 Use Card (Off Season)	75.00

CAMPSITES WITH YURT STRUCTURES

8 person nightly	75.00
16 person nightly	125.00
8 person weekly	395.00
16 person weekly	645.00

**CAMPSITE (WALK-IN/BICYCLE PARKING –
8 PERSON/BIKE MAX)**

Nightly	25.00
Weekly	135.00
14 nights	255.00



**SCHEDULE OF RATES AND CHARGES TO CUSTOMERS
OF THE EAST BAY MUNICIPAL UTILITY DISTRICT**

PAGE NUMBER 7

EFFECTIVE 01/01/17

**CAMANCHE RESERVOIR - NORTH SHORE
AND SOUTH SHORE RECREATION AREAS
(continued)**

USE FEE

GROUP CAMP (Nightly)

12-Person Limit	\$95.00
16-Person Limit	115.00
24-Person Limit	135.00
32-Person Limit	175.00
64-Person Limit	305.00
72-Person Limit	360.00

GROUP CAMP (Nightly, off season)

12-Person Limit	55.00
16-Person Limit	60.00
24-Person Limit	65.00
32-Person Limit	70.00
64-Person Limit	145.00
72-Person Limit	170.00

**EQUESTRIAN – TURKEY HILL – 2 HORSES
PER SINGLE SITE – “NO OFFSEASON
DISCOUNTS”**

General Assembly Area	80.00
Turkey Hill Single	50.00
Turkey Hill Double	105.00
Turkey Hill Triple	125.00
Turkey Hill Quad	165.00
Entire Turkey Hill (includes assembly area)	590.00

RV SITE

Nightly	48.00
Weekly	270.00
Monthly	500.00
Season (6-Month Max.)	1,850.00
6 night off-season use card (Off Season)	180.00
Premium Sites (Peak Season)	53.00
Premium Sites Weekly (Peak Season)	325.00
TOWING	
Camanche Recreation Area per hour	110.00

MISCELLANEOUS

Camanche Recreation Area Lake Tours	14.00
Holding Tank Pumping	100.00



**SCHEDULE OF RATES AND CHARGES TO CUSTOMERS
OF THE EAST BAY MUNICIPAL UTILITY DISTRICT**

PAGE NUMBER 8

EFFECTIVE 01/01/17

**CAMANCHE RESERVOIR - NORTH SHORE
AND SOUTH SHORE RECREATION AREAS
(continued)**

USE FEE

COTTAGE/MOTEL GENERAL

Camanche Recreation Area – Security Deposit	\$200.00
Additional Guest Charge (to maximum occupancy)	15.00

COTTAGE (4-Person Base)

May - Sept:	Night	170.00
	Week	800.00
Oct-March:	Night	115.00
	Week	570.00
	Month	1,500.00

COTTAGES (6-Person Base)

May-Sept:	Night	215.00
	Week	935.00
Oct-April:	Night	150.00
	Week	700.00
	Month	1,250.00

MOTEL (TWIN)

May-Sept:	Night	80.00
	Week	400.00
Oct-April:	Night	60.00
	Week	300.00
	Month	525.00

**RESORT RENTAL (4 BEDROOM, 14
PERSON MAX)**

May-Sept:	Night	325.00
	Week	1,625.00
Oct-March:	Night	155.00
	Week	785.00

MOBILE HOME (MONTHLY)

2 bedroom	CY16 Rate + HUD FMR
3 bedroom	CY16 Rate + HUD FMR



**SCHEDULE OF RATES AND CHARGES TO CUSTOMERS
OF THE EAST BAY MUNICIPAL UTILITY DISTRICT**

PAGE NUMBER 9

EFFECTIVE 01/01/17

**CAMANCHE RESERVOIR - NORTH SHORE
AND SOUTH SHORE RECREATION AREAS
(continued)**

USE FEE

MOBILE HOME SPACES (MONTHLY)

North Shore 1A

CY16 Rate
+ HUD
FMR

North Shore 1B

CY16 Rate
+ HUD
FMR

North Shore 2

CY16 Rate
+ HUD
FMR

South Shore

CY16 Rate
+ HUD
FMR

**OTHER MOBILE HOME FEES (Per Space –
Monthly)**

Guest Fee

\$75.00

Late Rent/Returned Check Fee

40.00

FACILITY RENTAL

Lakeside Hall Daily (hall only)

700.00

Lakeside Hall Daily (kitchen & serviceware
included)

1,000.00

Lakeside Hall Cleaning and Equipment Deposit

1,000.00

Camanche Clubhouse Rental Daily

150.00

Camanche Clubhouse Rental

100.00

*HUD FMR is the Housing and Urban Development Fair Market Rents Index which is published by HUD each October. The mobile home rental space rate will be adjusted annually based on the percent change in the HUD FMR index for 2-bedroom homes averaged for Amador and Calaveras Counties.



Camanche Reservoir – North and South Shore Recreation Area Discounts, Special Programs, Limitations.

Concessionaire Employees may receive free entrance to and use of rental boats during off-hours, a 20% discount on food and merchandise, and a camping discount equal to the car entrance fee. Limited to one free vehicle entry and one free boat rental per employee per day.

Concessionaire and/or District may provide free entry and use of rental boats for disadvantaged groups (e.g. disabled, senior, youth, veteran), and for media to promote the recreation area.

Current Camanche Regional Park Advisory Board members and active field public safety personnel in Amador, Calaveras and San Joaquin County receive free day use entry.

Senior/Disabled – 50% Discount on annual entry and boat launch fees, and on non-holiday weekday boat rentals. Senior rates are for individuals with a driver's license or ID showing age 62 or older.

Distinguished Veteran Pass holders – Free day use and boat launch and 50% discount on non-holiday weekday boat rentals.

Mobilehome Park Tenants-50% off non-holiday weekday boat rentals and additional 25% off for qualifying Senior/Disabled/Former POW/Disabled Veteran tenants; special additional incentives for non-holiday Tuesday boat rentals; a 40% discount on off-season monthly open slip, covered slip and mooring buoy fees; and a 10% discount on regularly priced marina/store items not including fishing access permits, fishing license, prepared food/beverage, gasoline and propane.

Groups of four or less individuals meeting the criteria for disabled discounts shall be eligible to rent the 6-person ADA cottages at Camanche for the 4-person cottage rate.

Turkey Hill Equestrian Campground single site customers renting larger spaces due to single sites being occupied shall be charged the lesser prorated rate.

Concessionaire or District can issue return coupons for free entry or camping for dissatisfied customers.

Groups participating in volunteer District facility improvement programs receive 50% discount on entry and camping fees.

Short-term visitor passes may be issued for periods up to one-hour.

Campsite charges include one vehicle entry, and RV site charges include a second/tow vehicle. Monthly and Seasonal RV Park fees include one vehicle entry, but do not include electricity charge. Electricity is metered and charged separately. Each of the daily charges, except the fishing access permit, shall be valid and effective for the calendar day upon which the charge was made, from one hour before sunrise until one hour after sunset.



Camanche Reservoir – North and South Shore Recreation Area Discounts, Special Programs, Limitations (continued).

Fishing access permits are valid until midnight of said day.

Each of the weekly charges shall be valid and effective for the calendar week in which the charge is made, terminating at 1:00 p.m. on the seventh consecutive day of said period. The seasonal charges noted for each recreation area shall be valid and effective for a period not exceeding 24 consecutive hours and terminating at 1:00 p.m. during said period.

Check out time for all RV sites in 1:00 p.m.

Peak Season is May 1 – September 30. Off-season is October 1 – April 30.

Premium Campsite or Premium RV site is a site that due to enhanced amenities, waterfront access or other special features is rented at a higher rate than a standard site.

Standard campsites may have a maximum of 8 people and 2 vehicles.

Short-term visitor passes may be issued for periods of up to one-hour.



**SCHEDULE OF RATES AND CHARGES TO CUSTOMERS
OF THE EAST BAY MUNICIPAL UTILITY DISTRICT**

PAGE NUMBER 12

EFFECTIVE 01/01/17

LAFAYETTE RECREATION AREA

USE FEE

ENTRY AND PARKING -

CAR/MOTORCYCLE/SMALL VAN

Daily	\$7.00
Annual (new; includes \$25 access card)	145.00
Annual (renewal, using existing access card)	120.00
Replacement access card (gate card)	25.00
Parking Meters ½ hour (may be increased up to a maximum rate of 0.75 per ½ hour prior to CY13)	0.75
Senior/Disabled	105.00
Season (new)	
Senior/Disabled	80.00
Season (renewal upon existing access card)	

ENTRY AND PARKING

LARGE VANS AND BUSES

Large Vans - 10-20 Passengers	18.00
Buses – 21+ Passengers	33.00

DOG (no charge)

COMMERCIAL USES (in addition to the base fee noted below, the Director of Water and Natural Resources may set an additional fee to recover District's direct costs plus overhead.)

Commercial Use	
Small (up to 10 people)	100.00
Medium (from 11 to 50 people)	500.00
Large (from 51 to 150 people)	1,000.00

BOAT LAUNCH

Daily	4.00
Annual	50.00
Boat Inspection Fee	6.00

FISHING ACCESS

Daily	5.00
-------	------

GROUP PICNIC

Small Site (Weekend/Holiday)	200.00
Small Site (Weekday/Non-Holiday)	100.00
Large Site (Weekend/Holiday)	350.00
Large Site (Weekday/Non-Holiday)	175.00
Special Events Fee	500.00
	+ \$1/ participant



Lafayette Reservoir – Discounts, Special Programs, Limitations.

District may provide free entry and use of rental boats for disadvantaged groups (e.g. disabled, senior, youth, veteran), and for media to promote the recreation area.

Senior/Disabled – 50% discount on boat launch fees and on non-holiday weekday boat rentals. Senior rates are for individuals with a drivers' license showing age 62 or older.

Distinguished Veteran Pass holders – Free day use and boat launch and 50% discount on non-holiday weekday boat rentals.



**SCHEDULE OF RATES AND CHARGES TO CUSTOMERS
OF THE EAST BAY MUNICIPAL UTILITY DISTRICT**

PAGE NUMBER 14

EFFECTIVE 01/01/17

PARDEE RECREATION AREA

USE FEE

**VEHICLE ENTRY AND PARKING -
CAR/MOTORCYCLE/SMALL VAN**

Daily/Nightly (Non-Camping)	\$10.00
Season	112.00
Combined Car/Boat Daily	17.00

**VEHICLE ENTRY AND PARKING
LARGE VANS AND BUSES**

Large Vans - 10-20 Passengers	22.00
Buses – 21+ Passengers	38.00

DOG	5.00
------------	------

STANDARD BOAT LAUNCH

Daily (Weekend included)	9.00
Season	100.00

**CARTOP BOAT LAUNCH (Float Tube,
Kayak, Canoe, Scull)**

Daily	5.00
Season	44.00

BOAT MOORING

Monthly	120.00
Season	420.00

BOAT SLIP (excl. park entry)

Daily	9.50
Weekly	45.00
Monthly	135.00
Season	680.00
Season (concurrent with season RV)	630.00

FISHING ACCESS

Daily	6.00
Annual	195.00

MISCELLANEOUS

RV/Campsite Reservation Fee	10.00
-----------------------------	-------



**SCHEDULE OF RATES AND CHARGES TO CUSTOMERS
OF THE EAST BAY MUNICIPAL UTILITY DISTRICT**

PAGE NUMBER

15

EFFECTIVE 01/01/17

PARDEE RECREATION AREA (continued)

USE FEE

STANDARD CAMPSITE (w/vehicle parking)

Nightly	\$28.00
Second Car Parking	10.00
Weekly	168.00
Second Car Parking	60.00

PREMIUM CAMPSITE (w/vehicle parking)

Nightly	31.00
Weekly	186.00

CAMPSITE (walk-in/bicycle parking)

(8 person/8 bike maximum)

Nightly	22.00
Weekly	132.00

DOUBLE CAMPSITE (16 people/ 2 vehicles)

Nightly	52.00
Third or Fourth Vehicle	10.00

RV SITE

Nightly	38.00
Weekly	228.00
Monthly	500.00
Season	3,050.00
Season – Premium Site	3,150.00

RV/TRAILER/BOAT STORAGE (Excl. park entry)

Weekly	20.00
Monthly	60.00
Season	490.00
Season – concurrent with season RV Site	440.00
12 Month Consecutive	660.00

TOWING

80.00

RESERVABLE SITE/FACILITY (charges in addition to above fees)

Small (25 or less persons)	60.00
Medium (26-100 persons)	90.00
Large (101-150 persons)	120.00
Over 150 persons	235.00
Café/Pool Day Use Area (refundable deposit)	50.00



PARDEE RESERVOIR - DISCOUNTS, SPECIAL PROGRAMS, LIMITATIONS.

Concessionaire Employees may receive free entrance to and use of rental boats during off-season hours, a 20% discount on food and merchandise, and a camping discount equal to the car entrance fee. Limited to one free vehicle entry and one free boat rental per employee per day.

Concessionaire and/or District may provide free entry to and use of rental boats for disadvantaged groups (e.g. disabled, senior, youth, veteran), and for media to promote the recreation area.

Current Camanche Regional Park Advisory Board members and active field public safety personnel in Amador, Calaveras and San Joaquin County receive free day use entry.

Senior/Disabled – 50% Discount on annual entry and boat launch fees, and on non-holiday weekday boat rentals. Senior rates are for individuals with a driver's license or ID showing age 62 or older.

Distinguished Veteran Pass holders – Free day use and boat launch and 50% discount on non-holiday weekday boat rentals.

Concessionaire or District can issue return coupons for free entry or camping for dissatisfied customers.

Groups participating in volunteer District facility improvement programs receive 50% discount on entry and camping fees.

Campsite charges include one vehicle entry, and RV site charges include a second/tow vehicle.

Monthly and Seasonal RV Park fees include one vehicle entry, but do not include electricity charge. Electricity is metered and charged separately.

Each of the daily charges, except the fishing access permit, shall be valid and effective for the calendar day upon which the charge was made, from one hour before sunrise until one hour after sunset. Fishing access permits are valid until midnight of said day.

Each of the weekly charges shall be valid and effective for the calendar week in which the charge is made, terminating at 1:00 p.m. on the seventh consecutive day of said period.

Each of the nightly charges shall be valid and effective for a period not exceeding 24 consecutive hours and terminating at 1:00 p.m. during said period.

Premium Campsite or Premium RV site is a site that, due to enhanced amenities, waterfront access or other special features, is rented at a higher rate than a standard site.

Standard campsites may have a maximum of 8 people and 2 vehicles.

Short-term visitor passes may be issued for periods of up to one hour.



**SCHEDULE OF RATES AND CHARGES TO CUSTOMERS
OF THE EAST BAY MUNICIPAL UTILITY DISTRICT**

PAGE NUMBER 17

EFFECTIVE 01/01/17

SAN PABLO RECREATION AREA	<u>USE FEE</u>
ENTRY AND PARKING – CAR/MOTORCYCLE/SMALL VAN	
Daily	\$7.00
Daily (Special Events)	5.00
Season	110.00
3-Month Season	36.00
ENTRY AND PARKING LARGE VANS AND BUSES	
Large Vans - 10-20 Passengers	22.00
Buses – 21+ Passengers	40.00
DOG	2.00
COMMERCIAL USE (in addition to the base fee noted below, the Director of Water and Natural Resources may set an additional fee to recover District's direct costs plus overhead.)	
Small (up to 10 people)	120.00
Medium (11 to 50 people)	600.00
Large (51 to 150 people)	1,200.00
STANDARD BOAT LAUNCH	
Daily	8.00
Season (Entry & Boat Launch)	163.00
3-Month Season (Entry & Boat)	62.00
Boat Inspection Fee	6.00
CARTOP BOAT LAUNCH (Float Tube, Kayak, Canoe, Scull)	
Daily	4.00
Season (Entry and Cartop Launch)	124.00
3-Month Season (Entry & Cartop Launch)	41.00
FISHING ACCESS	
Daily	5.00
GROUP PICNIC	
Large Sites (Oaks) daily	260.00
Large Sites (Pines) daily	150.00
GAZEBO	60.00
TOWING	50.00



**SCHEDULE OF RATES AND CHARGES TO CUSTOMERS
OF THE EAST BAY MUNICIPAL UTILITY DISTRICT**

PAGE NUMBER 18

EFFECTIVE 01/01/17

SAN PABLO RECREATION AREA (continued) VISITOR CENTER & DECK RENTAL	<u>USE FEE</u>
WEEKDAY EVENING VISITOR CENTER & DECK (Minimum charge for up to 3 hours)	\$250.00
Extra hours	70.00
WEEKEND EVENING VISITOR CENTER & DECK (Minimum charge for up to 5 hours)	400.00
Extra hours	70.00
Evening Event Cleaning and Damage Deposit	
Events ending before 7:00 pm	150.00
Events ending after 7:00 pm	350.00
WEEKDAY VISITOR CENTER & DECK (8:00am-4:00pm)	200.00
2 consecutive days	350.00
3 consecutive days	500.00
Daytime Event Cleaning and Damage Deposit	125.00



SAN PABLO RESERVOIR – Discounts, Special Programs, Limitations.

Concessionaire employees may receive free entrance to and use of rental boats during off-hours, and a 20% discount on food and merchandise. The discount is limited to one free vehicle entry and one free boat rental per employee per day. To qualify, a concession employee must work a minimum of 20 hours per week, Sunday through Saturday.

Concessionaire and/or District may provide free entry to and use of rental boats for disadvantaged groups (e.g. disabled, senior, youth, veteran), and for media to promote the recreation area.

Concessionaire or District can issue return coupons for free entry or camping for dissatisfied customers.

Each of the daily charges, including the fishing access permit, shall be valid and effective for the calendar day upon which the charge was made, from the time the park opens until it closes each day.

Groups participating in volunteer District facility improvement programs receive 50% discount on entry fees.

Senior/Disabled – 50% Discount on seasonal and 3-month entry and boat launch fees, and on non-holiday weekday boat rentals. Senior rates are for individuals with a driver's license or ID showing age 62 or older.

Distinguished Veteran Pass holders – Free day use and boat launch and 50% discount on non-holiday weekday boat rentals.

Unless determined otherwise, the recreation season is mid-February through November (dates selected by concessionaire with District approval).



**SCHEDULE OF RATES AND CHARGES TO CUSTOMERS
OF THE EAST BAY MUNICIPAL UTILITY DISTRICT**

PAGE NUMBER 20

EFFECTIVE 01/01/17

WATERSHED TRAIL SYSTEM

USE FEE

WATERSHED TRAILS

Daily Permit	\$3.00
Annual Permit	10.00
Three-Year Permit	20.00
Five-Year Permit	30.00

Recreation Use Fees

January – June 2018



**SCHEDULE OF RATES AND CHARGES TO CUSTOMERS
OF THE EAST BAY MUNICIPAL UTILITY DISTRICT**

PAGE NUMBER

1

EFFECTIVE

01/01/18

**RECREATION USE FEES FOR 2018
January – December 2018¹**

The following fees apply to use of the District's recreation facilities at Camanche Hills Hunting Preserve, Camanche Reservoir, Lafayette Reservoir, Pardee Reservoir, San Pablo Reservoir and on the District's Watershed Trail System.

All other (not included in this schedule) charges and fees for merchandise and services provided to the public in connection with the public uses of the recreation areas and facilities thereat shall be determined by the concessionaire or the District and shall be reasonable and consistent with charges for similar merchandise and services at similar locations.

General Discount Program – Discounts from fees listed may be offered in order to attract new customers and/or improve revenues. General discounts will be applied for specified time frames and apply fairly and uniformly. General discounts must be approved by the Director of Water and Natural Resource Department in advance.

District employees, retirees and immediate family receive free vehicle entry and boat launch, and a camping discount equal the car entry fee (limit one per day).

Volunteer Discount Program – Free one-year Trail Use Permit and 50% discount on vehicle entry/parking and boat launch for those who contribute an annual minimum of 20 hours of volunteer work while participating in a District Volunteer Program.

Distinguished Veteran Discount Program – Holders of the California State Parks Distinguished Veteran Pass receive free day use and boat launch at all District recreation areas.

Fishing Access Permits are required for persons 16 years of age or older. Up to four children 15 years and under and accompanied by a person who possesses a valid CA fishing license and daily fishing access permit, may fish under that fishing access permit subject to the daily possession limit of the permit holder. Every accompanied child, over the allowed number of four, must have individual fishing access permits. Each child not accompanied by a fishing access permit holding adult must obtain his/her own fishing access permit.

No Fishing Access Permit is required on the two annual California Department of Fish and Wildlife Free Fishing Days.

¹Fee years are by calendar year for all locations except the Camanche Hills Hunting Preserve where fees are implemented earlier for the hunting year October 1 - September 30.



**SCHEDULE OF RATES AND CHARGES TO CUSTOMERS
OF THE EAST BAY MUNICIPAL UTILITY DISTRICT**

PAGE NUMBER

2

EFFECTIVE

01/01/18

CAMANCHE HILLS HUNTING PRESERVE

USE FEE

**PRESERVE LICENSE (QUANTITY PRICE
BREAK)**

PRESERVE LICENSE:

Initiation Fee (Family)	\$3,195.00
Initiation Fee (Corporate)	3,195.00
Annual Maintenance (Family)	300.00
Annual Maintenance (Corporate)	500.00

**LICENSED GUIDE GOOSE HUNT (PER
PERSON/HUNT)**

200.00

BIRD PROCESSING: (PRICE PER EACH)

Pheasant	4.00
Chukar	4.00
20-bird card (pheasant and chukar) for 20	70.00
Duck	4.50
Goose	10.00
Smoking (all birds)	5.00

DOG RENTAL

Half Day	75.00
Full Day	140.00
Special Hunt	140.00

SPORTING CLAYS

Full Round Course (100 targets)	40.00
Half Round Course (50 targets)	22.00
25 targets (5-Stand/Grouse bunker)	9.00
5 targets (Skeet/trap)	6.00

ARCHERY RANGE AND COURSE

7 Station 3-D target Course	
Per person	10.00
Per pair	18.00
Per group (max 4)	34.00

**FISHING ACCESS TO RABBIT CREEK ARM
OF CAMANCHE LAKE AND FARM PONDS
LOCATED ON CHHP RECREATIONAL AREA**

Public Fishing Access	10.00
CHHP Members Access	5.00

**FISHING ACCESS TO RABBIT CREEK ARM
OF CAMANCHE LAKE**

Public Fishing Access: Bow for Carp	10.00
-------------------------------------	-------



**SCHEDULE OF RATES AND CHARGES TO CUSTOMERS
OF THE EAST BAY MUNICIPAL UTILITY DISTRICT**

PAGE NUMBER

3

EFFECTIVE

01/01/18

**CAMANACHE HILLS HUNTING PRESERVE
(continued)**

USE FEE

RV Parking Area

Nightly	\$6.00
---------	--------

Clubhouse Rental (daily)	500.00
--------------------------	--------

Kitchen Rental (daily)	500.00
------------------------	--------

Grounds (daily)	500.00
-----------------	--------

**Camanche Hills Hunting Preserve
Discounts, Special Programs and Limitations**

Pricing for planted bird hunting will be reviewed and approved by the Director of Water and Natural Resources.

Free bird hunting and sporting clays shooting is offered to the communications media, based on the availability of birds and the sporting clays course.

Free use of the facilities is offered to non-profit hunting organizations for family, disabled and junior hunting functions.

A Target Shooting (sporting clay, trap, 5-stand and bunkers) discount of 15% is offered to Senior, Disabled, and active or retired military visitors.

A Target Shooting discount of 50% is offered to Distinguished Veteran Pass holders.

A Driven Pheasant Shoot discount of 15% is offered to Senior, Disabled, active or retired military, and Distinguished Veteran Pass holders.

An RV Parking discount of 50% is offered to Senior, Disabled and Distinguished Veteran Pass holders.

Daily field trial events are permitted on a limited basis. Fees range from \$0 for qualified non-profit organizations to a maximum of \$200.00.

EBMUD employees and retirees, concession employees and Tri-County (Amador, Calaveras and San Joaquin) Public Safety Personnel receive a 20% discount on food purchases and a 10% discount on sporting clays.

Discounts and incentives are separate and cannot be combined for a larger discount or incentive.



**SCHEDULE OF RATES AND CHARGES TO CUSTOMERS
OF THE EAST BAY MUNICIPAL UTILITY DISTRICT**

PAGE NUMBER

4

EFFECTIVE

01/01/18

**CAMANCHE RESERVOIR – NORTH SHORE
AND SOUTH SHORE RECREATION AREAS**

USE FEE

VEHICLE ENTRY/PARKING

CAR/MOTORCYCLE/SMALL VAN

Daily	\$13.00
Daily, after 3:00pm weekdays except Memorial Day, Independence Day, and Labor Day	10.00
Daily (Off-season)	9.00
Nightly (non-camping)	13.00
Annual (12 consecutive months)	170.00
Combined Car/Boat Daily	17.00
Combined Car and Boat 5 Use Card (Off- season)	65.00
Combined Car and Boat 5 Use Card, after 3:00pm weekdays	40.00
Annual Marina Overnight/Day Use (12 consecutive months)	220.00

VEHICLE ENTRY/PARKING

LARGE VANS AND BUSES

Large Vans – 10-20 Passengers	19.00
Buses – 21+ Passengers	36.00

DOG

Daily	5.50
Annual (12 consecutive months concurrent with Annual Parking Pass)	35.00

BOAT LAUNCH

Daily	11.00
Daily (Off-season)	8.00
Night	11.00
Annual (12 consecutive months)	160.00
Senior/Disabled/Formal POW/Disabled Veteran Annual (12 consecutive months)	80.00

BOAT MOORING (Buoy)

Nightly	16.00
Weekly	85.00
Monthly: under 30 feet	265.00
30 feet & larger	340.00
Annual (12 consecutive months): under 30 feet	1,500.00
30 feet & larger	2,000.00



**SCHEDULE OF RATES AND CHARGES TO CUSTOMERS
OF THE EAST BAY MUNICIPAL UTILITY DISTRICT**

PAGE NUMBER

5

EFFECTIVE

01/01/18

**CAMANCHE RESERVOIR – NORTH SHORE
AND SOUTH SHORE RECREATION AREAS
(continued)**

USE FEE

BOAT SLIP OPEN (Excluding park entry)

Daily	\$30.00
Weekly	150.00
Monthly	350.00
Annual (12 consecutive months)	1,650.00
8 Months	1,350.00
Key Security Deposit	10.00

**BOAT SLIP COVERED – 24' Length
Maximum**

Daily	45.00
Weekly	180.00
Monthly	500.00
Annual (12 consecutive months)	2,000.00
Key Security Deposit	50.00

**BOAT SLIP COVERED – (over 24' Length
Excluding Park Entry)**

Daily	50.00
Weekly	225.00
Monthly	600.00
Annual (12 consecutive months)	2,500.00
Key Security Deposit	50.00

**RV/TRAILER/BOAT STORAGE (Excluding
park entry)**

Weekly	55.00
Monthly	130.00
12 Months, consecutive	750.00
Monthly – 30' Length Maximum (Concurrent with Mooring/Slip Rental)	60.00
Monthly – Over 30' (Concurrent with Mooring/Slip Rental)	90.00
Annual – 30' Length Maximum (Concurrent with Mooring/Slip Rental) (12 consecutive months)	320.00
Annual – Over 30' (Concurrent with Mooring/Slip Rental) (12 consecutive months)	450.00
Annual – concurrent with Mobile Home Space rent (12 consecutive months)	425.00
Annual – concurrent with Mobile Home Space rent (<28', 1 boat only, dry # 3) (12 consecutive months)	175.00



**SCHEDULE OF RATES AND CHARGES TO CUSTOMERS
OF THE EAST BAY MUNICIPAL UTILITY DISTRICT**

PAGE NUMBER

6

EFFECTIVE

01/01/18

**CAMANCHE RESERVOIR – NORTH SHORE
AND SOUTH SHORE RECREATION AREAS
(continued)**

USE FEE

FISHING ACCESS PERMIT

Daily	\$6.25
Annual	135.00

CAMPSITE (w/vehicle parking)

Nightly	30.00
Nightly (Off-season – Friday thru Sunday nights)	17.00
Midweek (Monday thru Thursday night)	8.50
Second Car Parking	15.00
Weekly	160.00
Second Car Weekly	75.00
14 nights	295.00
5 Use Card (Off-season)	80.00
Camping Reservation Fee	11.00

LAKESIDE PREMIUM CAMPSITES

Nightly	38.00
Nightly (Off Season Friday thru Sunday nights)	17.00
Midweek (Monday thru Thursday night)	8.50
Second Car Parking	15.00
Weekly	190.00
Second Car Weekly	80.00
14 Nights	350.00
5 Use Card (Off Season)	80.00

CAMPSITES WITH YURT STRUCTURES

8 person nightly	80.00
16 person nightly	135.00
8 person weekly	395.00
16 person weekly	645.00

**CAMPSITE (WALK-IN/BICYCLE PARKING –
8 PERSON/BIKE MAX)**

Nightly	25.00
Weekly	135.00
14 nights	255.00



**SCHEDULE OF RATES AND CHARGES TO CUSTOMERS
OF THE EAST BAY MUNICIPAL UTILITY DISTRICT**

PAGE NUMBER

7

EFFECTIVE

01/01/18

**CAMANCHE RESERVOIR – NORTH SHORE
AND SOUTH SHORE RECREATION AREAS
(continued)**

USE FEE

GROUP CAMP (Nightly)

12-Person Limit	\$105.00
16-Person Limit	125.00
24-Person Limit	150.00
32-Person Limit	200.00
64-Person Limit	350.00
72-Person Limit	400.00

GROUP CAMP (Nightly, off season)

12-Person Limit	55.00
16-Person Limit	60.00
24-Person Limit	65.00
32-Person Limit	70.00
64-Person Limit	145.00
72-Person Limit	170.00

**EQUESTRIAN – TURKEY HILL – 2 HORSES
PER SINGLE SITE – “NO OFFSEASON
DISCOUNTS”**

General Assembly Area	85.00
Turkey Hill Single	53.00
Turkey Hill Double	110.00
Turkey Hill Triple	130.00
Turkey Hill Quad	175.00
Entire Turkey Hill (includes assembly area)	625.00

RV SITE

Nightly	50.00
Weekly	300.00
Monthly	550.00
Season (6-Month Max)	1,850.00
6 night off-season use card (Off Season)	185.00
Premium Sites (Peak Season)	55.00
Premium Sites Weekly (Peak Season)	330.00

TOWING

Camanche Recreation Area per hour	115.00
-----------------------------------	--------

MISCELLANEOUS

Camanche Recreation Area Lake Tours	14.00
Holding Tank Pumping	100.00



**SCHEDULE OF RATES AND CHARGES TO CUSTOMERS
OF THE EAST BAY MUNICIPAL UTILITY DISTRICT**

PAGE NUMBER

8

EFFECTIVE

01/01/18

**CAMANCHE RESERVOIR – NORTH SHORE
AND SOUTH SHORE RECREATION AREAS
(continued)**

USE FEE

COTTAGE/MOTEL GENERAL

Camanche Recreation Area – Security Deposit	\$200.00
Additional Guest Charge (to maximum occupancy)	15.00

COTTAGE (4-Person Base)

May - Sept:	Night	175.00
	Week	825.00
Oct –April:	Night	115.00
	Week	570.00
	Month	1,500.00

COTTAGE (6-Person Base)

May - Sept:	Night	225.00
	Week	950.00
Oct - April:	Night	150.00
	Week	700.00
	Month	1,250.00

MOTEL (TWIN)

May - Sept:	Night	80.00
	Week	400.00
Oct - April:	Night	60.00
	Week	300.00
	Month	525.00

**RESORT RENTAL (4 BEDROOM, 14
PERSON MAX)**

May - Sept:	Night	350.00
	Week	1,700.00
Oct - April:	Night	155.00
	Week	785.00

MOBILE HOME (MONTHLY)

3 bedroom	CY17 Rate + HUD FMR ¹
-----------	--



**SCHEDULE OF RATES AND CHARGES TO CUSTOMERS
OF THE EAST BAY MUNICIPAL UTILITY DISTRICT**

PAGE NUMBER

9

EFFECTIVE

01/01/18

**CAMANCHE RESERVOIR – NORTH SHORE
AND SOUTH SHORE RECREATION AREAS
(continued)**

USE FEE

MOBILE HOME SPACES (MONTHLY)

North Shore 1A	CY17 Rate + HUD FMR
North Shore 1B	CY17 Rate + HUD FMR
North Shore 2	CY17 Rate + HUD FMR
South Shore	CY17 Rate + HUD FMR

**OTHER MOBILE HOME FEES (Per Space –
Monthly)**

Guest Fee	\$75.00
Late Rent/Returned Check Fee	40.00

FACILITY RENTAL

Lakeside Hall Daily (hall only)	700.00
Lakeside Hall Daily (kitchen & serviceware included)	1,000.00
Lakeside Hall Cleaning and Equipment Deposit	1,000.00
Camanche Clubhouse Rental Daily	150.00
Camanche Clubhouse Rental	100.00

¹HUD FMR is the Housing and Urban Development Fair Market Rents Index which is published by HUD each October. The mobile home rental space rate will be adjusted annually based on the percent change in the HUD FMR index for 2-bedroom homes averaged for Amador and Calaveras Counties.



Camanche Reservoir – North and South Shore Recreation Area Discounts, Special Programs, Limitations

Concessionaire Employees receive free entrance to and use of rental boats during off-hours, a 20% discount on food and merchandise, and a camping discount equal to the car entrance fee. Limited to one free vehicle entry and one free boat rental per employee per day.

Concessionaire and/or District may provide free entry and use of rental boats for disadvantaged groups (e.g., disabled, senior, youth, veteran), and for media to promote the recreation area.

Current Camanche Regional Park Advisory Board members and active field public safety personnel in Amador, Calaveras and San Joaquin County receive free day use entry.

Senior/Disabled receive 50% Discount on annual entry and boat launch fees, and on non-holiday weekday boat rentals. Senior rates are for individuals with a driver's license or ID showing age 62 or older.

Active, reserve, retired, and veteran military personnel receive 20% discount on day use entry, boat rentals (excluding rental of the party barge), camping and short-term (14-day) RV sites and lodging. Military identification required. Discount may not be combined with other offers.

Distinguished Veteran Pass holders receive free day use and boat launch and 50% discount on non-holiday weekday boat rentals.

Mobilehome Park Tenants receive 50% off non-holiday weekday boat rentals and additional 25% off for qualifying Senior/Disabled/Former POW/Disabled Veteran tenants; special additional incentives for non-holiday Tuesday boat rentals; a 40% discount on off-season monthly open slip, covered slip and mooring buoy fees; and a 10% discount on regularly priced marina/store items not including fishing access permits, fishing license, prepared food/beverage, gasoline and propane.

Groups of four or less individuals meeting the criteria for disabled discounts shall be eligible to rent the 6-person ADA cottages at Camanche for the 4-person cottage rate.

Turkey Hill Equestrian Campground single site customers renting larger spaces due to single sites being occupied shall be charged the lesser prorated rate.

Concessionaire or District can issue return coupons for free entry or camping for dissatisfied customers.

Groups participating in volunteer District facility improvement programs receive 50% discount on entry and camping fees.

Short-term visitor passes may be issued for periods up to one-hour.



Camanche Reservoir – North and South Shore Recreation Area Discounts, Special Programs, Limitations (continued)

Campsite charges include one vehicle entry, and RV site charges include a second/tow vehicle. Monthly and Seasonal RV Park fees include one vehicle entry, but do not include electricity charge. Electricity is metered and charged separately. Each of the daily charges, except the fishing access permit, shall be valid and effective for the calendar day upon which the charge was made, from one hour before sunrise until one hour after sunset.

Fishing access permits are valid until midnight of said day.

Each of the weekly charges shall be valid and effective for the calendar week in which the charge is made, terminating at 1:00 p.m. on the seventh consecutive day of said period. The seasonal charges noted for each recreation area shall be valid and effective for a period not exceeding 24 consecutive hours and terminating at 1:00 p.m. during said period.

Check out time for all RV sites in 1:00 p.m.

Peak Season is May 1 – September 30. Off-season is October 1 – April 30.

Premium Campsite or Premium RV site is a site that due to enhanced amenities, waterfront access or other special features is rented at a higher rate than a standard site.

Standard campsites may have a maximum of 8 people and 2 vehicles.

Short-term visitor passes may be issued for periods of up to one-hour.



**SCHEDULE OF RATES AND CHARGES TO CUSTOMERS
OF THE EAST BAY MUNICIPAL UTILITY DISTRICT**

PAGE NUMBER

12

EFFECTIVE

01/01/18

LAFAYETTE RECREATION AREA

USE FEE

ENTRY AND PARKING –

CAR/MOTORCYCLE/SMALL VAN

Daily	\$7.00
Annual (new, includes \$25 access card)	145.00
Annual (renewal, using existing access card)	120.00
Replacement access card (gate card)	25.00
Parking Meters ½ hour (may be increased up to a maximum rate of 0.75 per ½ hour prior to CY13)	0.75
Senior/Disabled	
Season (new)	105.00
Senior/Disabled	
Season (renewal upon existing access card)	80.00

ENTRY AND PARKING –

LARGE VANS AND BUSES

Large Vans – 10-20 Passengers	18.00
Buses – 21+ Passengers	33.00

DOG (no charge)

COMMERCIAL USES (in addition to the base fee noted below, the Director of Water and Natural Resources may set an additional fee to recover District's direct costs plus overhead)

Commercial Use	
Small (up to 10 people)	100.00
Medium (from 11 to 50 people)	500.00
Large (from 51 to 150 people)	1,000.00

BOAT LAUNCH

Daily	4.00
Annual	50.00
Boat Inspection Fee	6.00

FISHING ACCESS

Daily	5.00
-------	------

GROUP PICNIC

Small Site (Weekend/Holiday)	200.00
Small Site (Weekday/Non-Holiday)	100.00
Large Site (Weekend/Holiday)	350.00
Large Site (Weekday/Non-Holiday)	175.00
Special Events Fee	500.00
	+ \$1/ participant



**SCHEDULE OF RATES AND CHARGES TO CUSTOMERS
OF THE EAST BAY MUNICIPAL UTILITY DISTRICT**

PAGE NUMBER

13

EFFECTIVE

01/01/18

Lafayette Reservoir – Discounts, Special Programs, Limitations

District may provide free entry and use of rental boats for disadvantaged groups (e.g., disabled, senior, youth, veteran), and for media to promote the recreation area.

Senior/Disabled receive 50% discount on boat launch fees and on non-holiday weekday boat rentals. Senior rates are for individuals with a drivers' license showing age 62 or older.

Distinguished Veteran Pass holders receive free day use and boat launch and 50% discount on non-holiday weekday boat rentals.



**SCHEDULE OF RATES AND CHARGES TO CUSTOMERS
OF THE EAST BAY MUNICIPAL UTILITY DISTRICT**

PAGE NUMBER

14

EFFECTIVE

01/01/18

PARDEE RECREATION AREA

USE FEE

**VEHICLE ENTRY AND PARKING –
CAR/MOTORCYCLE/SMALL VAN**

Daily/Nightly (Non-Camping)	\$10.00
Season	115.00
Combined Car/Boat Daily	15.00

**VEHICLE ENTRY AND PARKING –
LARGE VANS AND BUSES**

Large Vans – 10-20 Passengers	22.00
Buses – 21+ Passengers	38.00

DOG

Daily	5.00
Season (Concurrent with Season Parking Pass)	35.00

STANDARD BOAT LAUNCH

Daily (Weekend included)	9.00
Season	103.00

**CARTOP BOAT LAUNCH (Float Tube,
Kayak, Canoe, Scull)**

Daily	5.00
Season	44.00

BOAT SLIP (excluding park entry)

Daily	9.50
Weekly	45.00
Monthly	135.00
Season	680.00
Season (concurrent with season RV)	630.00

FISHING ACCESS

Daily	6.00
Annual	195.00

MISCELLANEOUS

RV/Campsite Reservation Fee	10.00
-----------------------------	-------



**SCHEDULE OF RATES AND CHARGES TO CUSTOMERS
OF THE EAST BAY MUNICIPAL UTILITY DISTRICT**

PAGE NUMBER

15

EFFECTIVE

01/01/18

PARDEE RECREATION AREA (continued)	<u>USE FEE</u>
STANDARD CAMPSITE (w/vehicle parking)	
Nightly	\$28.00
Second Car Parking	10.00
Weekly	168.00
Second Car Parking	60.00
PREMIUM CAMPSITE (w/vehicle parking)	
Nightly	31.00
Weekly	186.00
CAMPSITE (walk-in/bicycle parking) (8 person/8 bike maximum)	
Nightly	22.00
Weekly	132.00
DOUBLE CAMPSITE (16 people/2 vehicles)	
Nightly	52.00
Third or Fourth Vehicle	10.00
RV SITE	
Nightly	38.00
Weekly	228.00
Monthly	500.00
Season	3,050.00
Season – Premium Site	3,150.00
RV/TRAILER/BOAT STORAGE (excluding park entry)	
Weekly	20.00
Monthly	60.00
Season	500.00
Season – concurrent with season RV Site	440.00
12 Month Consecutive	660.00
TOWING	80.00
RESERVABLE SITE/FACILITY (charges in addition to above fees)	
Small (25 or less people)	65.00
Medium (26-100 people)	95.00
Large (101-150 people)	130.00
Over 150 people	250.00
Café/Pool Day Use Area (refundable deposit)	55.00



PARDEE RESERVOIR – DISCOUNTS, SPECIAL PROGRAMS, LIMITATIONS

Concessionaire Employees receive free entrance to and use of rental boats during off-season hours, a 20% discount on food and merchandise, and a camping discount equal to the car entrance fee. Limited to one free vehicle entry and one free boat rental per employee per day.

Concessionaire and/or District may provide free entry to and use of rental boats for disadvantaged groups (e.g., disabled, senior, youth, veteran), and for media to promote the recreation area.

Current Camanche Regional Park Advisory Board members and active field public safety personnel in Amador, Calaveras and San Joaquin County receive free day use entry.

Senior/Disabled receive 50% Discount on annual entry and boat launch fees, and on non-holiday weekday boat rentals. Senior rates are for individuals with a driver's license or ID showing age 62 or older.

Active, reserve, retired, and veteran military personnel receive 20% discount on day use entry, boat rentals (excluding Deluxe Pontoon), and dry camping (excluding RV hook-up sites). Military identification required. Discount may not be combined with other offers.

Distinguished Veteran Pass holders receive free day use and boat launch and 50% discount on non-holiday weekday boat rentals.

Concessionaire or District can issue return coupons for free entry or camping for dissatisfied customers.

Groups participating in volunteer District facility improvement programs receive 50% discount on entry and camping fees.

Campsite charges include one vehicle entry, and RV site charges include a second/tow vehicle.

Monthly and Seasonal RV Park fees include one vehicle entry, but do not include electricity charge. Electricity is metered and charged separately.

Each of the daily charges, except the fishing access permit, shall be valid and effective for the calendar day upon which the charge was made, from one hour before sunrise until one hour after sunset. Fishing access permits are valid until midnight of said day.

Each of the weekly charges shall be valid and effective for the calendar week in which the charge is made, terminating at 1:00 p.m. on the seventh consecutive day of said period.

Each of the nightly charges shall be valid and effective for a period not exceeding 24 consecutive hours and terminating at 1:00 p.m. during said period.



**SCHEDULE OF RATES AND CHARGES TO CUSTOMERS
OF THE EAST BAY MUNICIPAL UTILITY DISTRICT**

PAGE NUMBER 17

EFFECTIVE 01/01/18

PARDEE RESERVOIR – DISCOUNTS, SPECIAL PROGRAMS, LIMITATIONS (continued)

Premium Campsite or Premium RV site is a site that, due to enhanced amenities, waterfront access or other special features, is rented at a higher rate than a standard site.

Standard campsites may have a maximum of 8 people and 2 vehicles.

Short-term visitor passes may be issued for periods of up to one hour.



**SCHEDULE OF RATES AND CHARGES TO CUSTOMERS
OF THE EAST BAY MUNICIPAL UTILITY DISTRICT**

PAGE NUMBER

18

EFFECTIVE

01/01/18

SAN PABLO RECREATION AREA

USE FEE

**ENTRY AND PARKING –
CAR/MOTORCYCLE/SMALL VAN**

Daily	\$7.00
Daily (Special Events)	5.00
Season	110.00
3-Month Season	36.00

**ENTRY AND PARKING –
LARGE VANS AND BUSES**

Large Vans – 10-20 Passengers	22.00
Buses – 21+ Passengers	40.00

DOG	2.00
------------	------

COMMERCIAL USE (in addition to the base fee noted below, the Director of Water and Natural Resources may set an additional fee to recover District's direct costs plus overhead)

Small (up to 10 people)	120.00
Medium (11 to 50 people)	600.00
Large (51 to 150 people)	1,200.00

STANDARD BOAT LAUNCH

Daily	8.00
Season (Entry & Boat Launch)	163.00
3-Month Season (Entry & Boat)	62.00
Boat Inspection Fee	6.00

**CARTOP BOAT LAUNCH (Float Tube,
Kayak, Canoe, Scull)**

Daily	4.00
Season (Entry and Cartop Launch)	124.00
3-Month Season (Entry and Cartop Launch)	41.00

FISHING ACCESS

Daily	5.00
-------	------

GROUP PICNIC

Large Sites (Oaks) daily	260.00
Large Sites (Pines) daily	150.00

GAZEBO	60.00
---------------	-------

TOWING	50.00
---------------	-------



**SCHEDULE OF RATES AND CHARGES TO CUSTOMERS
OF THE EAST BAY MUNICIPAL UTILITY DISTRICT**

PAGE NUMBER

19

EFFECTIVE

01/01/18

**SAN PABLO RECREATION AREA
(continued)**

USE FEE

VISITOR CENTER & DECK RENTAL

WEEKDAY EVENING VISITOR CENTER & DECK (Minimum charge for up to 3 hours)	\$250.00
Extra hours	70.00

WEEKEND EVENING VISITOR CENTER & DECK (Minimum charge for up to 5 hours)	400.00
Extra hours	70.00

Evening Event Cleaning and Damage Deposit	
Events ending before 7:00 pm	150.00
Events ending after 7:00 pm	350.00

WEEKDAY VISITOR CENTER & DECK (8:00am-4:00pm)	200.00
--	--------

2 consecutive days	350.00
3 consecutive days	500.00
Daytime Event Cleaning and Damage Deposit	125.00



SAN PABLO RESERVOIR – Discounts, Special Programs, Limitations

Concessionaire employees receive free entrance to and use of rental boats during off-hours, and a 20% discount on food and merchandise. The discount is limited to one free vehicle entry and one free boat rental per employee per day. To qualify, a concession employee must work a minimum of 20 hours per week, Sunday through Saturday.

Concessionaire and/or District may provide free entry to and use of rental boats for disadvantaged groups (e.g., disabled, senior, youth, veteran), and for media to promote the recreation area.

Concessionaire or District can issue return coupons for free entry or camping for dissatisfied customers.

Each of the daily charges, including the fishing access permit, shall be valid and effective for the calendar day upon which the charge was made, from the time the park opens until it closes each day.

Groups participating in volunteer District facility improvement programs receive 50% discount on entry fees.

Senior/Disabled receive 50% Discount on seasonal and 3-month entry and boat launch fees, and on non-holiday weekday boat rentals. Senior rates are for individuals with a driver's license or ID showing age 62 or older.

Distinguished Veteran Pass holders receive free day use and boat launch and 50% discount on non-holiday weekday boat rentals.

Unless determined otherwise, the recreation season is mid-February through November (dates selected by concessionaire with District approval).



**SCHEDULE OF RATES AND CHARGES TO CUSTOMERS
OF THE EAST BAY MUNICIPAL UTILITY DISTRICT**

PAGE NUMBER

21

EFFECTIVE

01/01/18

WATERSHED TRAIL SYSTEM

USE FEE

WATERSHED TRAILS

Daily Permit	\$3.00
Annual Permit	10.00
Three-Year Permit	20.00
Five-Year Permit	30.00